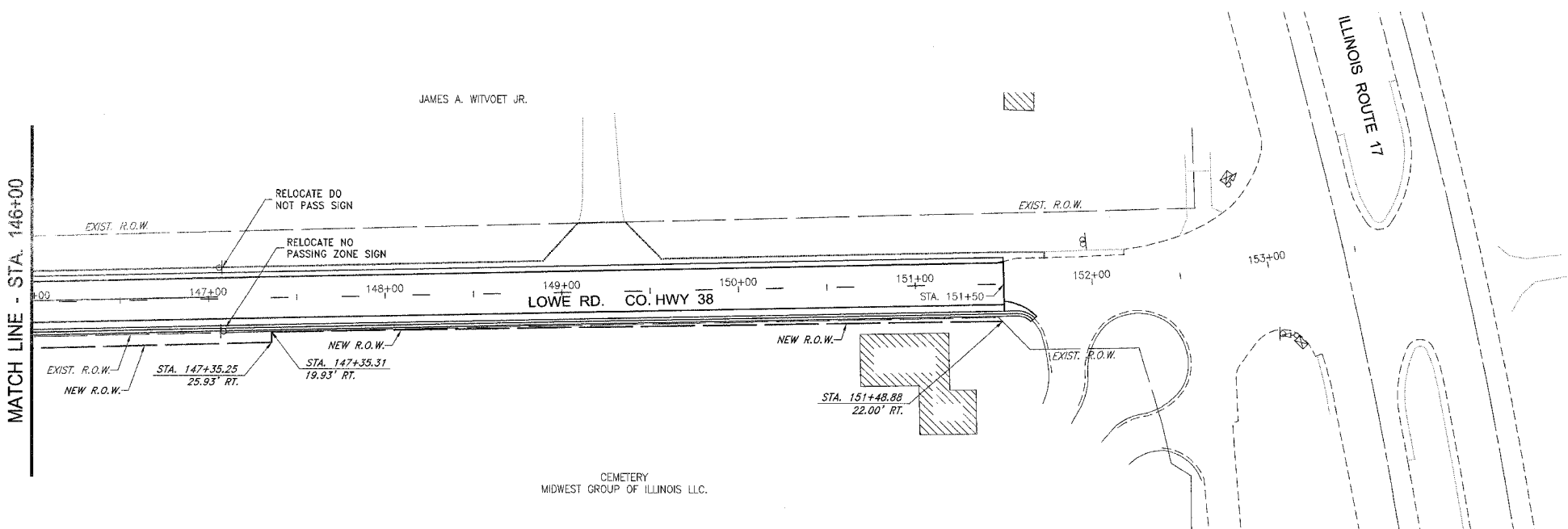
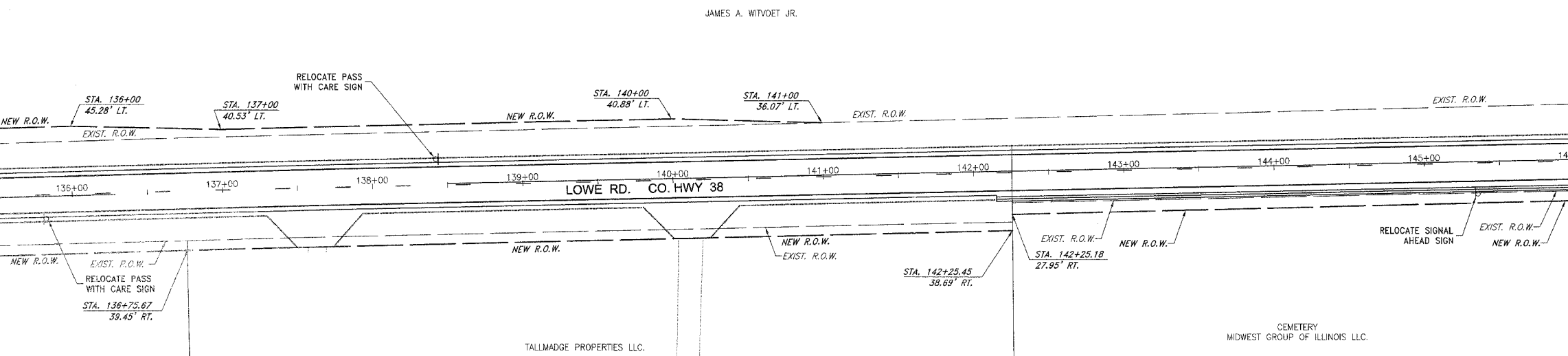
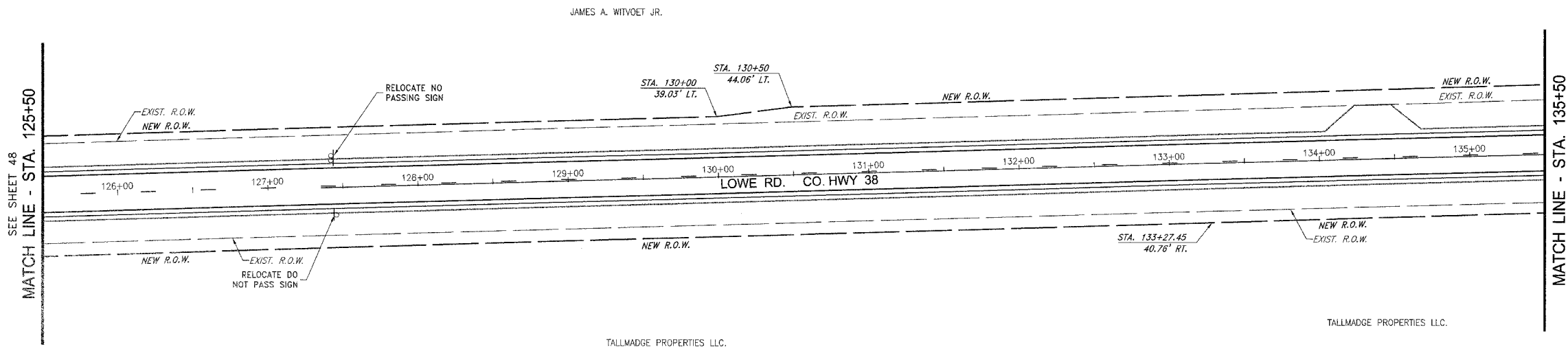


PA:2006\ED01015\dwg\ED01015-CH\_39.dwg 1/17/2007 11:02:44 AM CST



MATCH LINE - STA. 135+50

MATCH LINE - STA. 146+00

FAU NO.	SECTION	COUNTY	TOTAL SHEETS	SHEET NO.
*	**	KANKAKEE	83	47

CONTRACT NO. 87314

FED. ROAD DIST. NO. ILLINOIS FED. AID PROJECT  
 \*\* LOWE RD. FAU 6209/WALDRON RD. FAU 6184  
 \*\* 02-00284-00-WR & 01-00017-00-FP

**TYSON ENGINEERING, INC.**  
 CONSULTING CIVIL ENGINEERS  
 LAND SURVEYORS  
 DESIGN FIRM LICENSE #184-001136  
 367 SOUTH SCHUYLER AVENUE  
 KANKAKEE, ILLINOIS 60901  
 PHONE (815) 932-7406

This document and the ideas and designs incorporated herein, as an instrument of professional service, is the property of Tyson Engineering Inc. and is not to be used in whole or in part, for any other project without written authorization of Tyson Engineering Inc.

Do not scale drawings. Use dimensions only. Contractor shall be responsible for verifying all dimensions.

Information hereon and herein is confidential.

REVISIONS				
NO.	DATE	BY	DESCRIPTION	
3	10/24/06	MRG	PER IDOT REVIEW	
4	12/29/06	MRG	PER COUNTY REV	

LOWE ROAD  
 STRIPING AND  
 SIGNAGE PLAN  
 STA. 125+50 TO STA. 151+50

PROJECT:  
**PROPOSED IMPROVEMENTS FOR  
 LOWE ROAD  
 FROM IL-17 TO WALDRON ROAD  
 WALDRON ROAD  
 FROM CORP. LIMITS TO DIVISION STREET**

SECTION  
 02-00284-00-WR &  
 01-00017-00-FP

DATE: 07/10/06	JOB NO. E01015
SCALE: HORZ.: 1"=40' VERT.: N/A	FILE NO.
DRAWN BY: MRG	SHEET
CHECKED BY: SRM	<b>47</b>
	83

