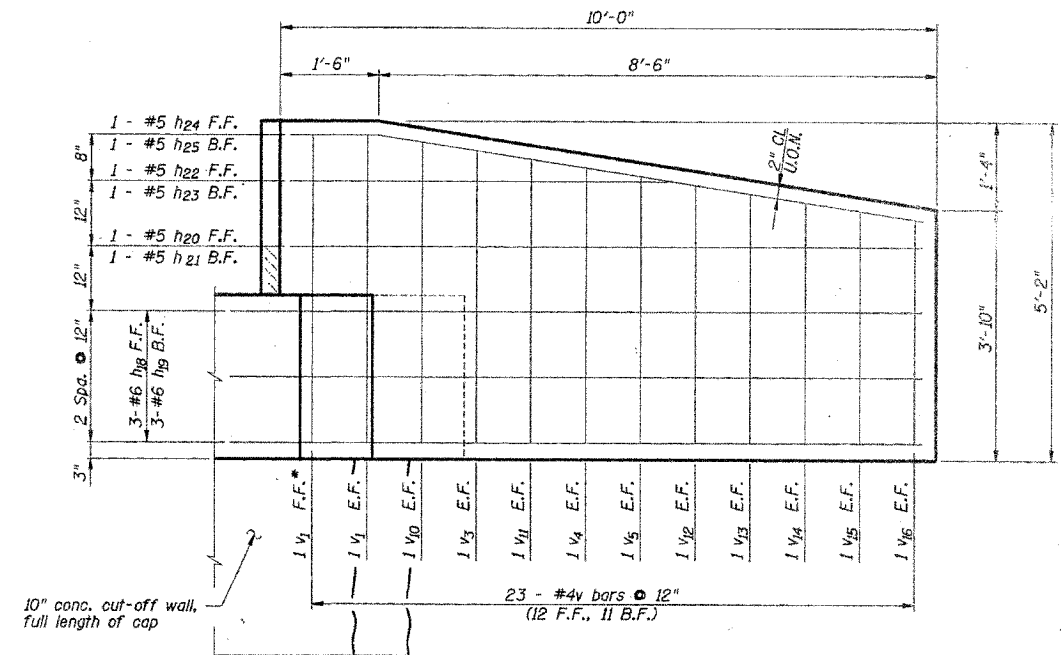
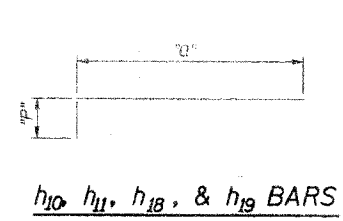


**ELEV. B-B**  
Wingwalls shall be poured after beams are in place.



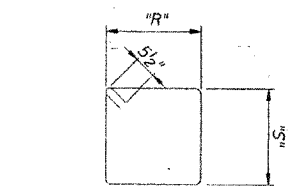
**ELEV. C-C**  
Wingwalls shall be poured after beams are in place.

F.F.\* - Front Face Only  
F.F. - Front Face  
B.F. - Back Face  
E.F. - Each Face  
U.O.N. - Unless otherwise noted



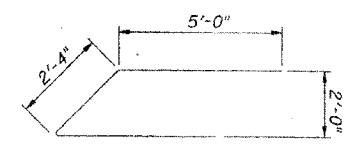
**h<sub>10</sub>, h<sub>11</sub>, h<sub>18</sub>, & h<sub>19</sub> BARS**

Bar	"P"	"Q"
h <sub>10</sub>	8'-11"	12"
h <sub>11</sub>	9'-3"	12"
h <sub>18</sub>	10'-4"	12"
h <sub>19</sub>	11'-5"	12"

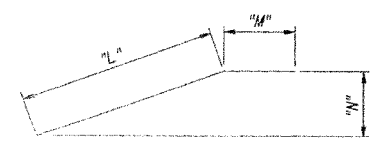


**s<sub>10</sub>, s<sub>11</sub>, & s<sub>12</sub> BARS**

Bar	"R"	"S"
s <sub>10</sub>	2'-2"	2'-2"
s <sub>11</sub>	2'-3"	2'-2"
s <sub>12</sub>	2'-6"	2'-2"



**BAR U<sub>10</sub>**



**h<sub>16</sub>, h<sub>17</sub>, h<sub>24</sub>, & h<sub>25</sub> BARS**

Bar	"L"	"M"	"N"
h <sub>16</sub>	6'-5"	1'-4"	1'-6 1/2"
h <sub>17</sub>	6'-5"	1'-1"	1'-6 1/2"
h <sub>24</sub>	8'-4"	1'-4"	1'-3 3/4"
h <sub>25</sub>	8'-4"	0'-4"	1'-3 3/4"

DSGN	K.J. Hoffmann				
DR	K.J. Hoffmann				
CHK	J.A. Fraenhoffer				
APVD	J.A. Fraenhoffer	NO.	DATE	REVISION	BY

**FRAUENHOFFER**  
Fraenhoffer and Associates, P.C. Consulting Engineers  
3002 Crossing Court Champaign, Il. 61822 217-351-6268

**ABUTMENTS - SHEET 2 OF 2**  
COUNTY HIGHWAY 38  
SECTION 02-00284-00-WR  
KANKAKEE COUNTY

SHEET	51
DWG NO.	3104-sot.dgn
DATE	JUL 2006
PROJ NO.	3104