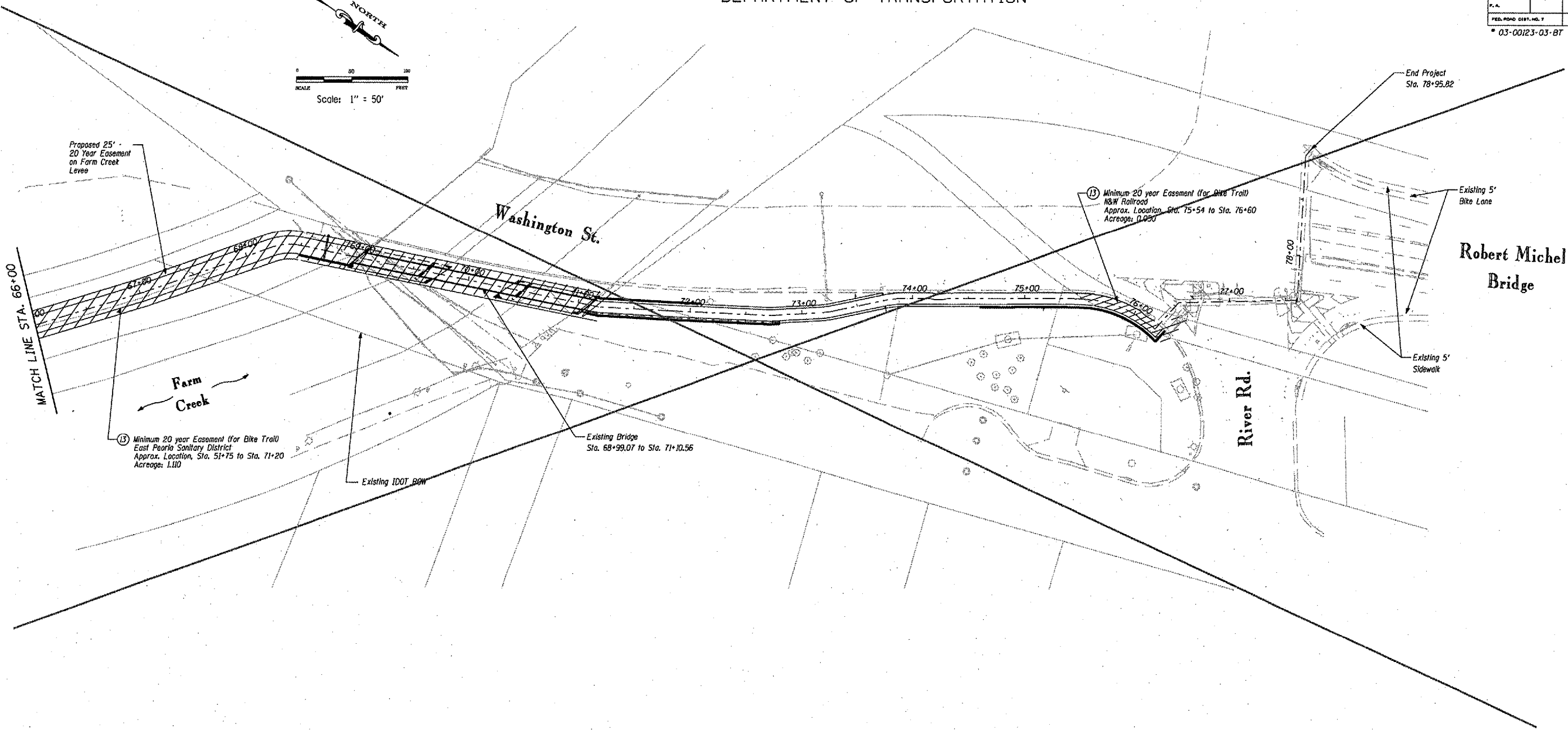
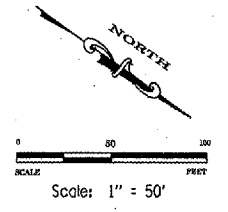


STATE OF ILLINOIS
DEPARTMENT OF TRANSPORTATION

| | | | | |
|-----------------------|---------|------------------|------------------|-------|
| ROUTE NO. | SECTION | COUNTY | SHEET | TOTAL |
| | | Tozwell | 43 | 19 |
| FED. ROAD DIST. NO. 7 | | ILLINOIS | FED. AID PROJECT | |
| 03-00123-03-BT | | CONTRACT # 89302 | | |



Proposed 25' -
20 Year Easement
on Farm Creek
Levee

Washington St.

Farm
Creek

⑬ Minimum 20 year Easement (for Bike Trail)
East Peoria Sanitary District
Approx. Location, Sta. 51+75 to Sta. 71+20
Acreage: 1.110

Existing IDOT ROW

Existing Bridge
Sta. 68+99.07 to Sta. 71+10.56

⑬ Minimum 20 year Easement (for Bike Trail)
N&W Railroad
Approx. Location, Sta. 75+54 to Sta. 76+60
Acreage: 0.090

Existing 5'
Bike Lane

Robert Michel
Bridge

Existing 5'
Sidewalk

River Rd.

End Project
Sta. 78+95.82

ROW & EASEMENT PLANS
BIKE TRAIL OVER FARM CREEK
SECTION 03-00123-03-BT
TAZEWELL COUNTY

| | | | | |
|----------|-----|---|-------------|-------------|
| DESIGNED | RMB | <p>RANDOLPH & ASSOCIATES, INC. 111 W. PIERCE PARKWAY, PEORIA, IL 61613-2124 TEL: 309-693-8800 FAX: 309-693-8800 WWW.RANDOLPH-ASSOCIATES.COM CONSULTING ENGINEERS & LAND SURVEYORS</p> | FILE NUMBER | 56.46 |
| CHECKED | CWB | | DATE | |
| DRAWN | RMB | | DATE | |
| CHECKED | CWB | | DATE | August 2003 |

10/26/2006 2:50:17 PM r:\Projects\0056\0056-033\Plan\08-2003 Submittal\19-RDW_Easement_3.dgn