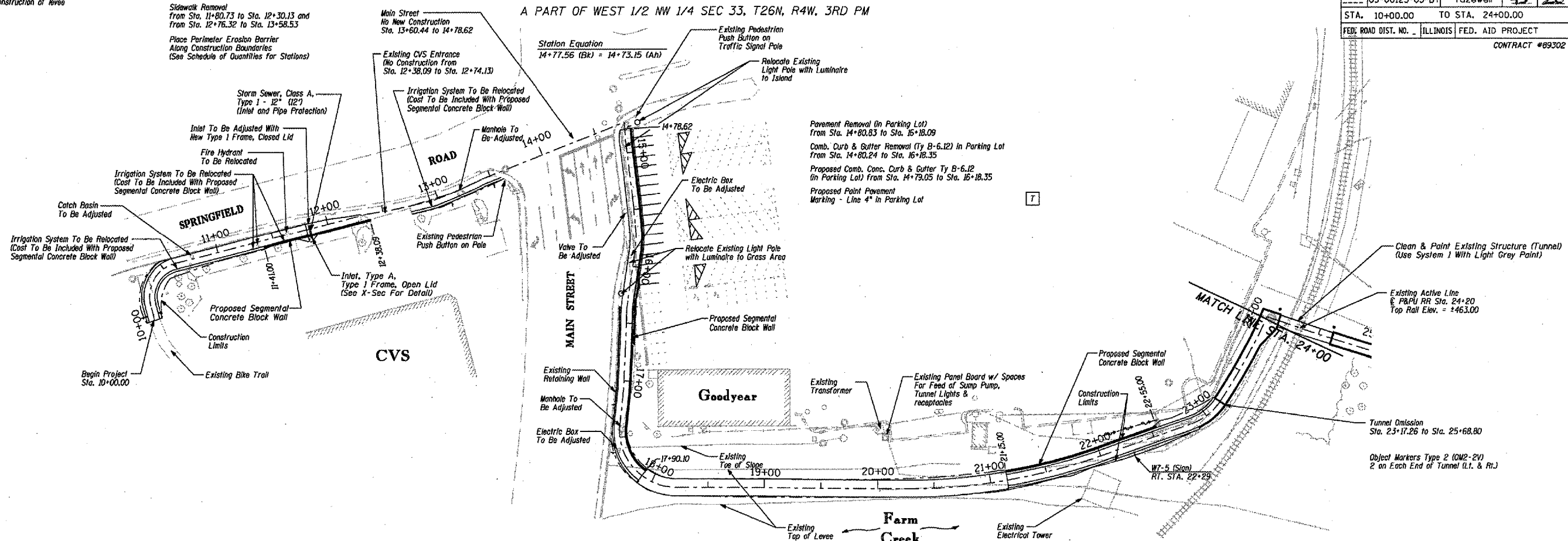


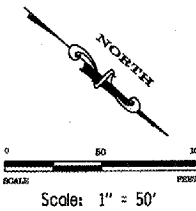
F.A. RTE.	SECTION	COUNTY	TOTAL SHEETS	SHEET NO.
03-00123-03-BT	Tazewell		43	20
STA. 10+00.00		TO STA. 24+00.00		
FED. ROAD DIST. NO. 1		ILLINOIS FED. AID PROJECT		CONTRACT #89302

Note: Alignment location may not be exact. Location of alignment along levee is dependent upon future construction of levee by the Army Corps of Engineers.

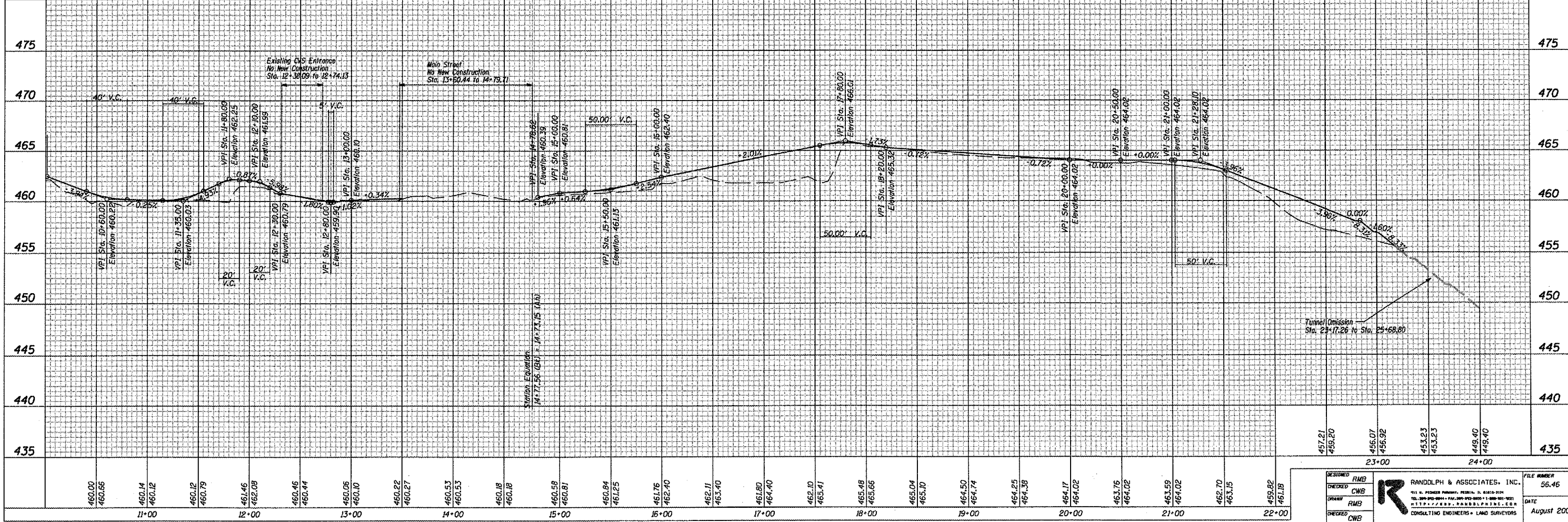
A PART OF WEST 1/2 NW 1/4 SEC 33, T26N, R4W, 3RD PM



DATE	BY
DATE	BY
DATE	BY
DATE	BY



DATE	BY
DATE	BY
DATE	BY
DATE	BY



2/8/2007 12:05:14 PM r:\Projects\0056\0056-033\Plns\01-2007.dgn's 20-Plan_Profile_1.dgn

DESIGNED	RMB	 RANDOLPH & ASSOCIATES, INC. 111 N. PIONEER PARKWAY, PEORIA, IL 61614-2124 TEL: 309-252-2004 FAX: 309-252-2000 TOLL-FREE: 1-800-252-2000 2117 W. 72ND ST., PEORIA, ILLINOIS 61614-2124	FILE NUMBER	56.46
CHECKED	CWB		DATE	August 2003
DRAWN	RMB			
CHECKED	CWB			