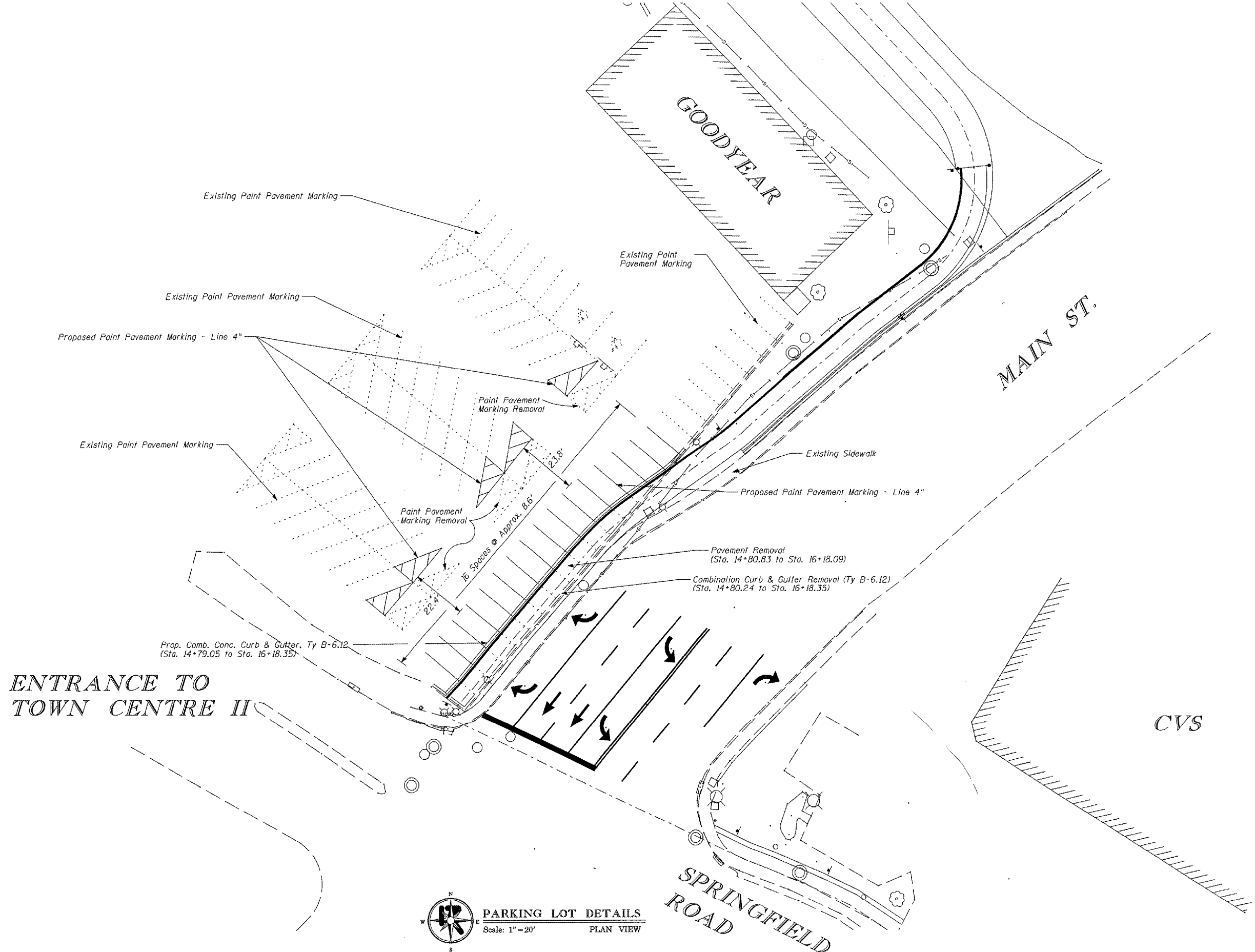


STATE OF ILLINOIS  
DEPARTMENT OF TRANSPORTATION

ROUTE NO.	SECTION	COUNTY	JOB NO.	SHEET NO.
	#	Tazewell	43	25
FED. ROAD DIST. NO. 7		ILLINOIS	FED. ROAD PROJECT	

\* 03-00123-03-BT CONTRACT #89302



ENTRANCE TO  
TOWN CENTRE II

**PARKING LOT DETAILS**  
Scale: 1" = 20'  
PLAN VIEW

PARKING LOT DETAILS  
BIKE TRAIL OVER FARM CREEK  
SECTION 03-00123-03-BT  
TAZEWELL COUNTY

DESIGNED	RMB	<p>RANDOLPH &amp; ASSOCIATES, INC. 111 N. PIONEER PARKWAY, P.O. BOX 2124 SPRINGFIELD, ILL. 62702-2124 TEL: 618-681-8844 FAX: 618-681-8888 WWW.RANDOLPH-INC.COM</p>	FILE NUMBER	56.46
CHECKED	CWB		DATE	August 2003
DRAWN	RMB			
CHECKED	CWB			

2/8/2007 11:19:46 AM r:\Projects\0056\0056-033\Planest\01-2007\dgr's 25-Parking\_Lot\_Details.dgn