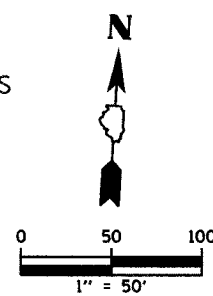
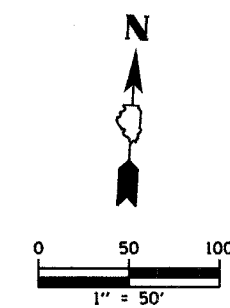
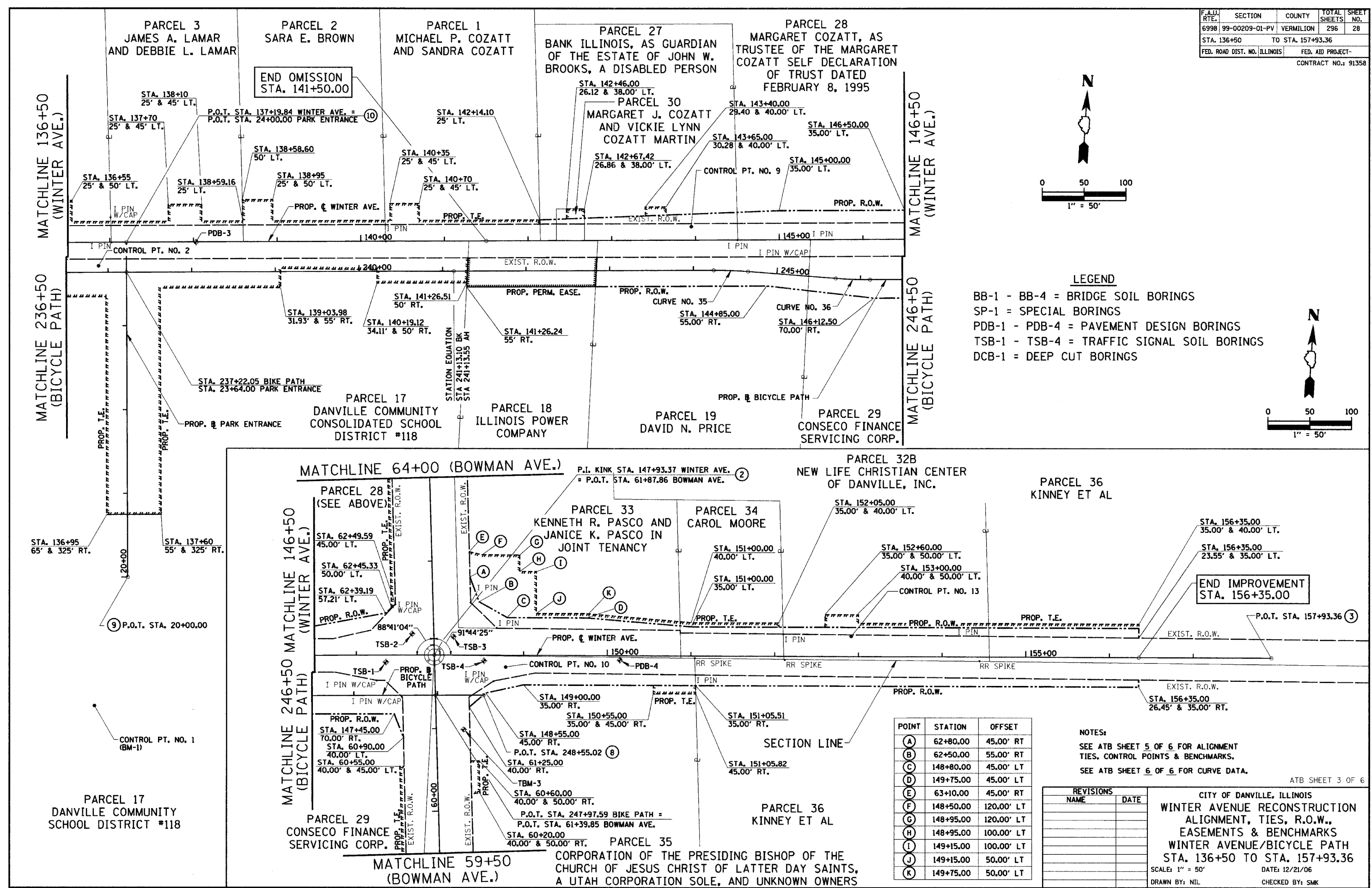


F.A.U. RTE.	SECTION	COUNTY	TOTAL SHEETS	SHEET NO.
6998	99-00209-01-PV	VERMILION	296	28
STA. 136+50		TO STA. 157+93.36		
FED. ROAD DIST. NO. ILLINOIS		FED. AID PROJECT-		
CONTRACT NO.: 91358				

PLAN	SURVEYED	DATE
	BY	
	NOTED	
	CHECKED	
	REVISIONS	
	NO. OF WAYS CHECKED	
	CADD FILE NAME	
	NO.	



**LEGEND**  
 BB-1 - BB-4 = BRIDGE SOIL BORINGS  
 SP-1 = SPECIAL BORINGS  
 PDB-1 - PDB-4 = PAVEMENT DESIGN BORINGS  
 TSB-1 - TSB-4 = TRAFFIC SIGNAL SOIL BORINGS  
 DCB-1 = DEEP CUT BORINGS



POINT	STATION	OFFSET
(A)	62+80.00	45.00' RT
(B)	62+50.00	55.00' RT
(C)	148+80.00	45.00' LT
(D)	149+75.00	45.00' LT
(E)	63+10.00	45.00' RT
(F)	148+50.00	120.00' LT
(G)	148+95.00	120.00' LT
(H)	148+95.00	100.00' LT
(I)	149+15.00	100.00' LT
(J)	149+15.00	50.00' LT
(K)	149+75.00	50.00' LT

**NOTES:**  
 SEE ATB SHEET 5 OF 6 FOR ALIGNMENT TIES, CONTROL POINTS & BENCHMARKS.  
 SEE ATB SHEET 6 OF 6 FOR CURVE DATA.

REVISIONS	NAME	DATE

CITY OF DANVILLE, ILLINOIS  
**WINTER AVENUE RECONSTRUCTION ALIGNMENT, TIES, R.O.W., EASEMENTS & BENCHMARKS WINTER AVENUE/BICYCLE PATH STA. 136+50 TO STA. 157+93.36**  
 SCALE: 1" = 50'  
 DRAWN BY: NIL  
 DATE: 12/21/06  
 CHECKED BY: SMK