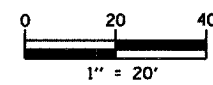


F.A.D. RTE.	SECTION	COUNTY	TOTAL SHEETS	SHEET NO.
6998	99-00209-01-PV	VERMILION	296	32
STA. 97+00		TO STA. 103+00		
FED. ROAD DIST. NO. ILLINOIS		FED. AID PROJECT-		
CONTRACT NO.: 91358				

REMOVAL LEGEND

- PAVEMENT REMOVAL
- DRIVEWAY PAVEMENT REMOVAL
- SIDEWALK REMOVAL
- BUILDING REMOVAL
- PAVEMENT REPLACEMENT
- TREE REMOVAL (AC)
- CURB & GUTTER REMOVAL
- GUARDRAIL REMOVAL
- TREE REMOVAL
- TREE TRUNK PROTECTION

SW 1/4 SEC. 28 T20N-R11W 2nd P.M.



PLAN	DATE
SURVEYED	BY
PLOTTED	BY
CHECKED	BY
RT. OF WAY CHECKED	BY
CADD FILE NAME	
NO.	

TREE TRUNK PROTECTION SCHEDULE

STATION	O/S	LT/RT	TREE TRUNK PROTECTION (EACH) 20101100
100+49.03	23.88'	RT	1
100+55.92	23.96'	RT	1
SHEET TOTALS			2

PAVEMENT REMOVAL SCHEDULE

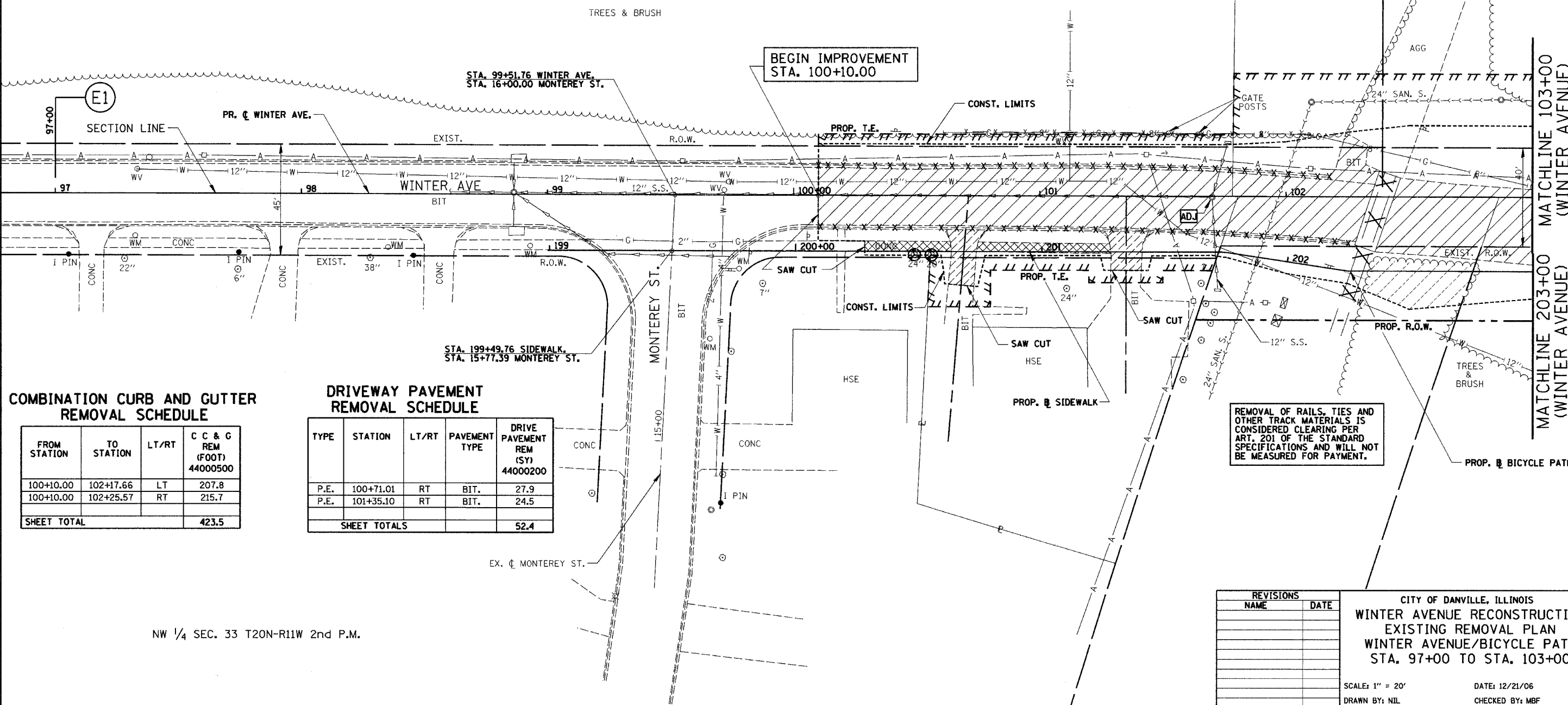
FROM STATION	TO STATION	PAVEMENT REM (SY) 44000100
100+10.00	102+34.35	610.9
102+43.77	103+00.00	197.2
SHEET TOTAL		808.1

SIDEWALK REMOVAL SCHEDULE

FROM STATION	TO STATION	LT/RT	SIDEWALK REM (SF) 44000600
100+28.91	100+64.18	RT	136.1
100+74.23	101+29.00	RT	212.4
SHEET TOTAL			348.5

TREE REMOVAL SCHEDULE (ACRES)

FROM STATION	TO STATION	LT/RT	TREE REMOV (ACRES) 20100500
102+33	102+78	RT	0.015
SHEET TOTAL			0.015



COMBINATION CURB AND GUTTER REMOVAL SCHEDULE

FROM STATION	TO STATION	LT/RT	C C & G REM (FOOT) 44000500
100+10.00	102+17.66	LT	207.8
100+10.00	102+25.57	RT	215.7
SHEET TOTAL			423.5

DRIVEWAY PAVEMENT REMOVAL SCHEDULE

TYPE	STATION	LT/RT	PAVEMENT TYPE	DRIVE PAVEMENT REM (SY) 44000200
P.E.	100+71.01	RT	BIT.	27.9
P.E.	101+35.10	RT	BIT.	24.5
SHEET TOTALS				52.4

NW 1/4 SEC. 33 T20N-R11W 2nd P.M.

REVISIONS	
NAME	DATE

CITY OF DANVILLE, ILLINOIS
WINTER AVENUE RECONSTRUCTION
EXISTING REMOVAL PLAN
WINTER AVENUE/BICYCLE PATH
STA. 97+00 TO STA. 103+00

SCALE: 1" = 20' DATE: 12/21/06
 DRAWN BY: NIL CHECKED BY: MBF