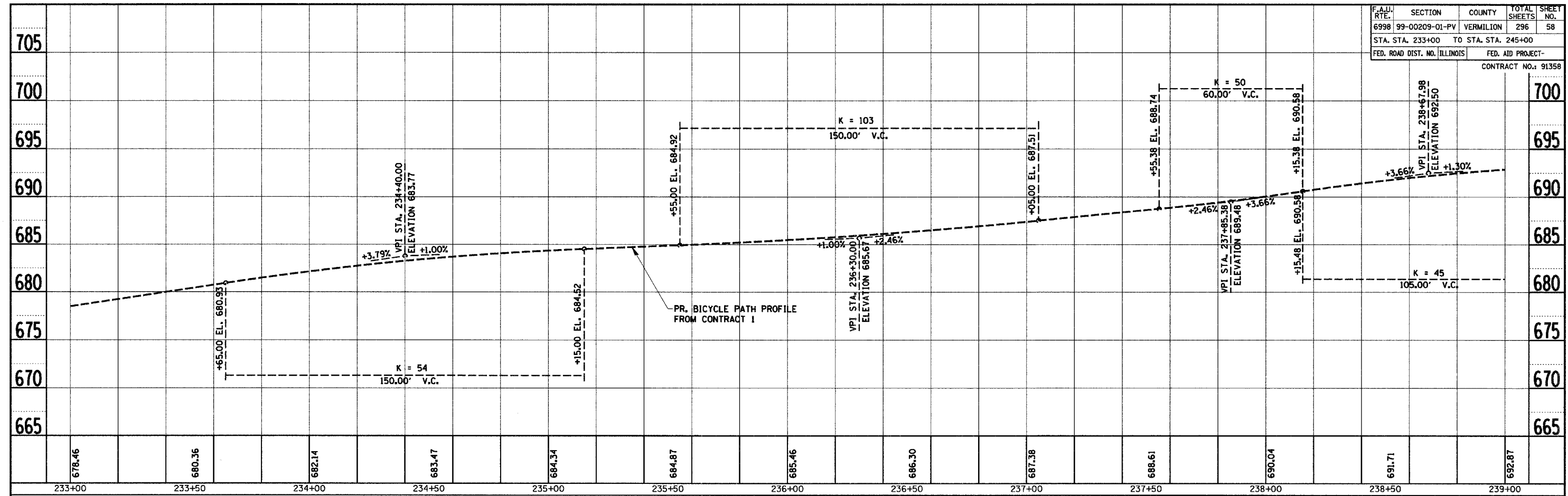
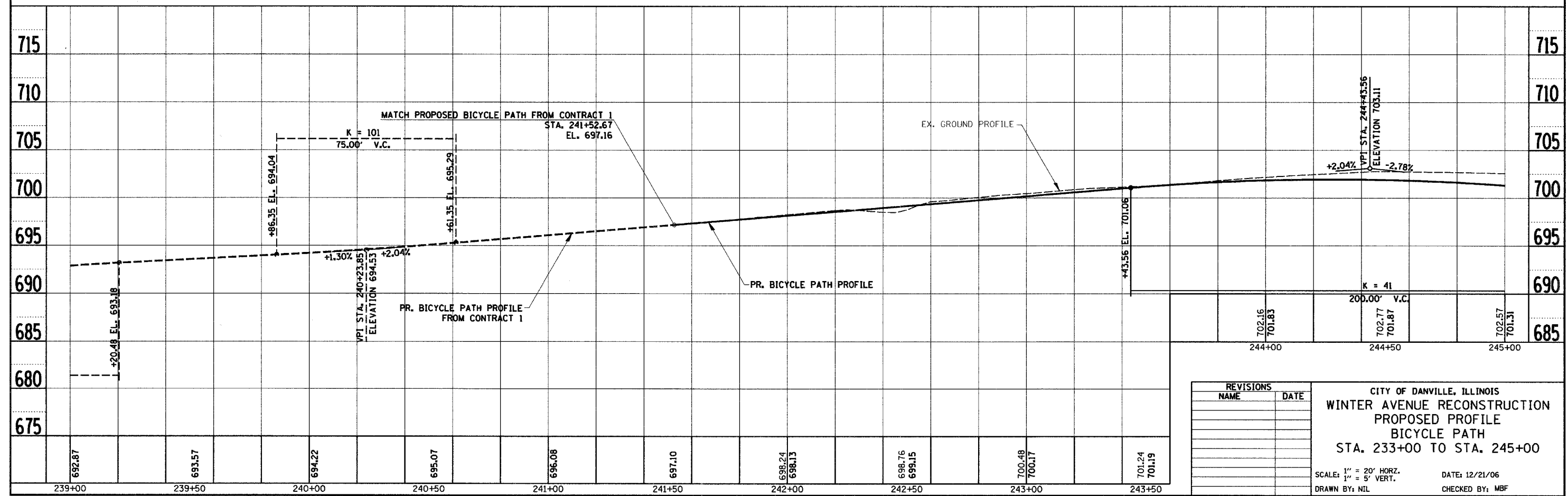


F.A.U. RTE.	SECTION	COUNTY	TOTAL SHEETS	SHEET NO.
6998	99-00209-01-PV	VERMILION	296	58
STA. STA. 233+00		TO STA. STA. 245+00		
FED. ROAD DIST. NO. ILLINOIS		FED. AID PROJECT-		
CONTRACT NO.: 91358				

PROFILE SURVEYED BY: \_\_\_\_\_ DATE: \_\_\_\_\_  
 PLOTTED BY: \_\_\_\_\_  
 CHECKED BY: \_\_\_\_\_  
 NOTE BOOK NO. \_\_\_\_\_  
 STRUCTURE NOTATION CRKD NO. \_\_\_\_\_



PROFILE SURVEYED BY: \_\_\_\_\_ DATE: \_\_\_\_\_  
 PLOTTED BY: \_\_\_\_\_  
 CHECKED BY: \_\_\_\_\_  
 NOTE BOOK NO. \_\_\_\_\_  
 STRUCTURE NOTATION CRKD NO. \_\_\_\_\_



REVISIONS	
NAME	DATE

CITY OF DANVILLE, ILLINOIS  
 WINTER AVENUE RECONSTRUCTION  
 PROPOSED PROFILE  
 BICYCLE PATH  
 STA. 233+00 TO STA. 245+00

SCALE: 1" = 20' HORIZ.  
 1" = 5' VERT.

DATE: 12/21/06  
 DRAWN BY: NIL  
 CHECKED BY: MBF