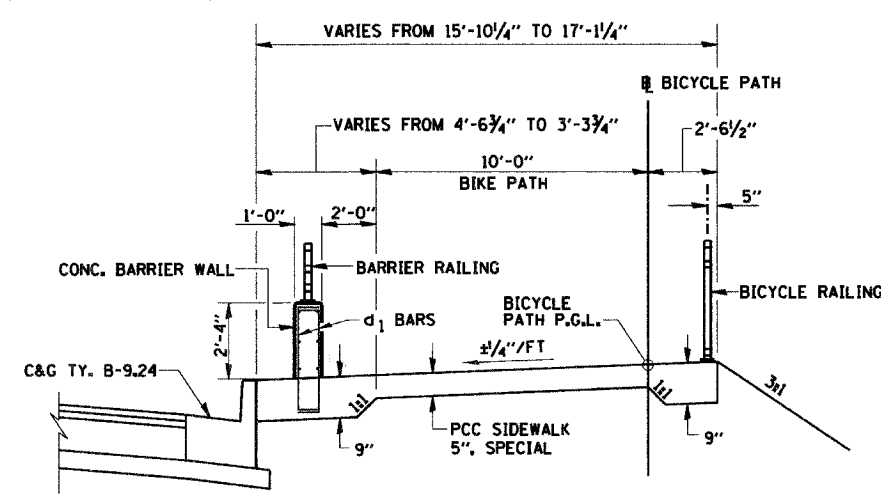
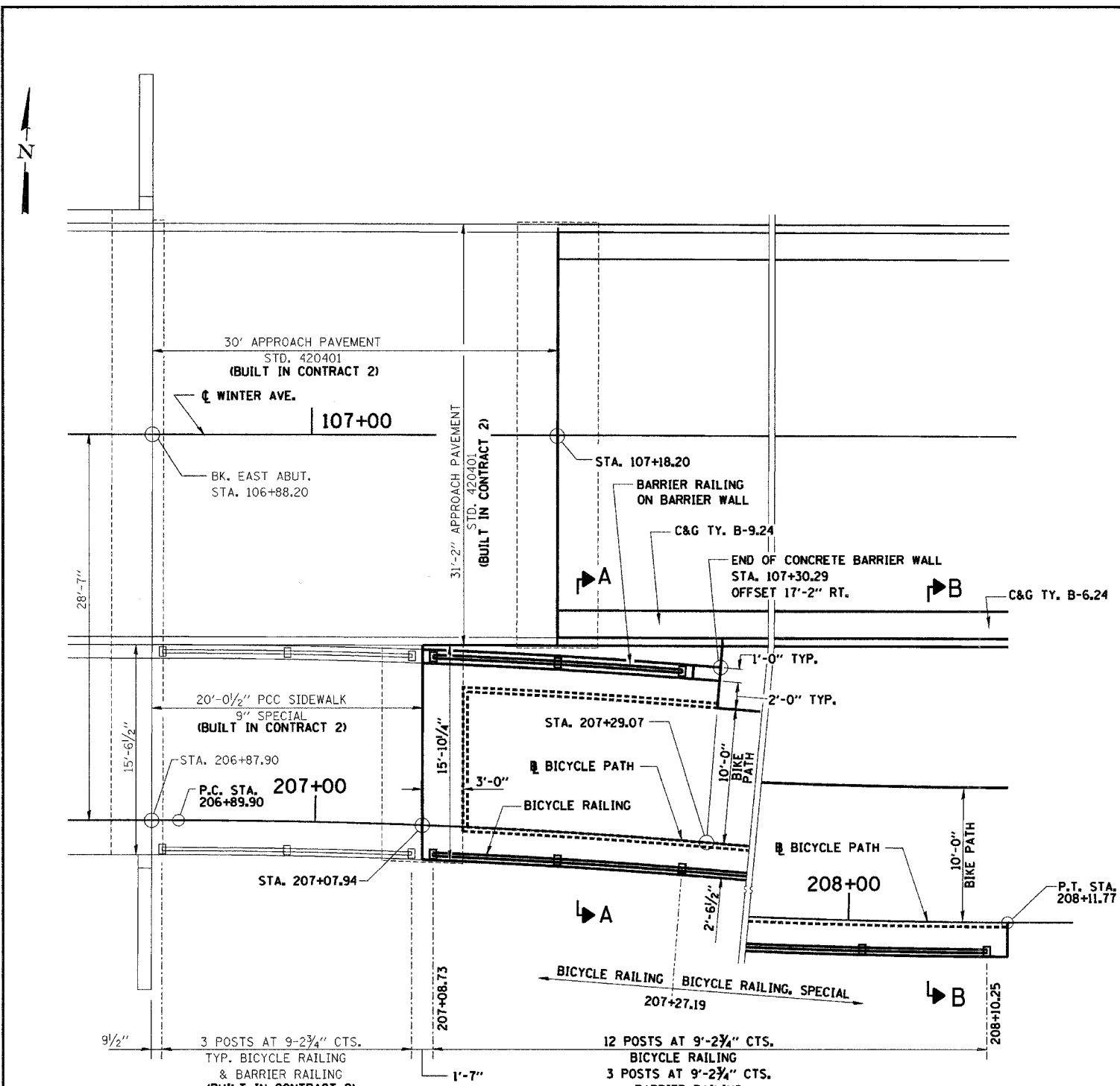
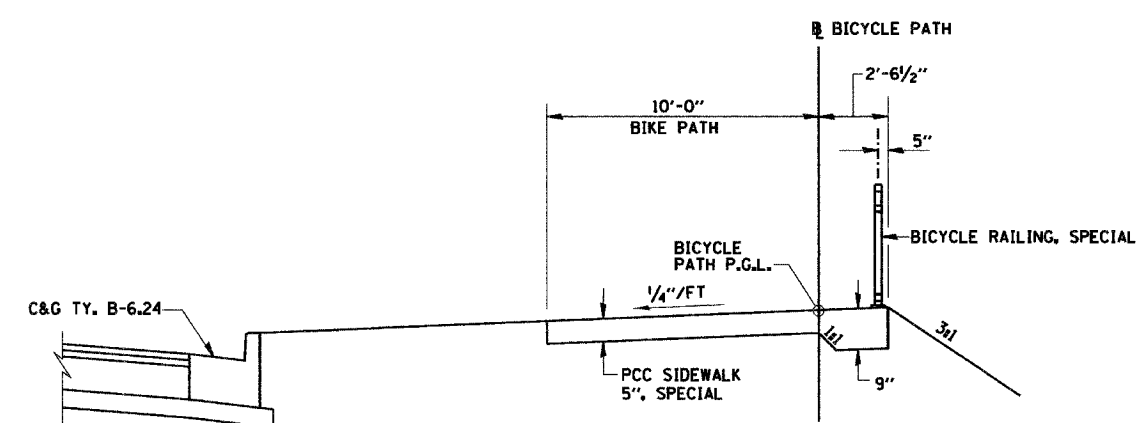


PLAN	SURVEYED	DATE
	DESIGNED	
	CHECKED	
	BY	
	NO. OF MAY CHECKED	
	CAD FILE NAME	



SECTION A-A



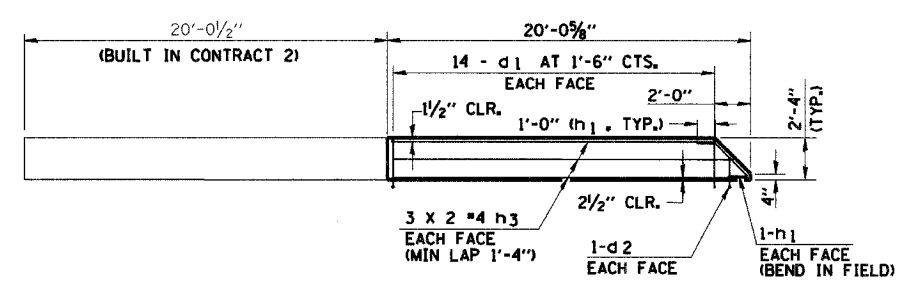
SECTION B-B

**CONCRETE BARRIER WALL
(EAST END)
BILL OF MATERIAL**

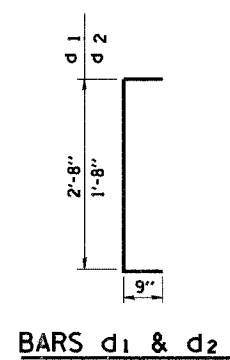
Bar	No.	Size	Length	Shape
d ₁	28	#4	4'-2"	┌
d ₂	2	#4	3'-2"	└
h ₁	2	#4	4'-7"	—
h ₃	12	#4	10'-8"	—
* Reinforcement Bars, Epoxy Coated				
* Concrete Structures				
* Protective Coat				
			Pound	170
			Cu. Yds.	1.7
			Sq. Yds.	12

* NOT A TOTAL QUANTITY. (FOR TOTAL QUANTITY ADD SIMILAR PAY ITEMS).

- NOTES:**
- f'c = 3500 psi
 - f_y = 60,000 psi (REINF.)
 - AVOID REINFORCEMENT WHEN SPACING RAIL ANCHOR ASSEMBLY.
 - SEE "BICYCLE RAILING DETAILS" SHEET FOR RAILING DETAILS.
 - BARRIER RAILING SHALL NOT BE QUANTIFIED SEPARATELY BUT SHALL BE CONSIDERED INCLUDED IN THE INSTALLATION AND COST OF BICYCLE RAILING.
 - BARS d₁ & d₂ SHALL BE CAST IN PCC SIDEWALK 5", SPECIAL
 - NO BARRIER RAILING IS REQUIRED ON THE OPPOSITE SIDE OF THE PATH FOR QUANTITIES COMPUTED AS BICYCLE RAILING, SPECIAL. STA. 207+27.19 TO STA. 208+10.25



CONCRETE BARRIER WALL ELEVATION



REVISIONS	
NAME	DATE

CITY OF DANVILLE, ILLINOIS
WINTER AVENUE RECONSTRUCTION
 BICYCLE PATH DETAILS
 EAST END

SCALE: N.T.S. DATE: 12/21/06
 DRAWN BY: SRS CHECKED BY: MBF