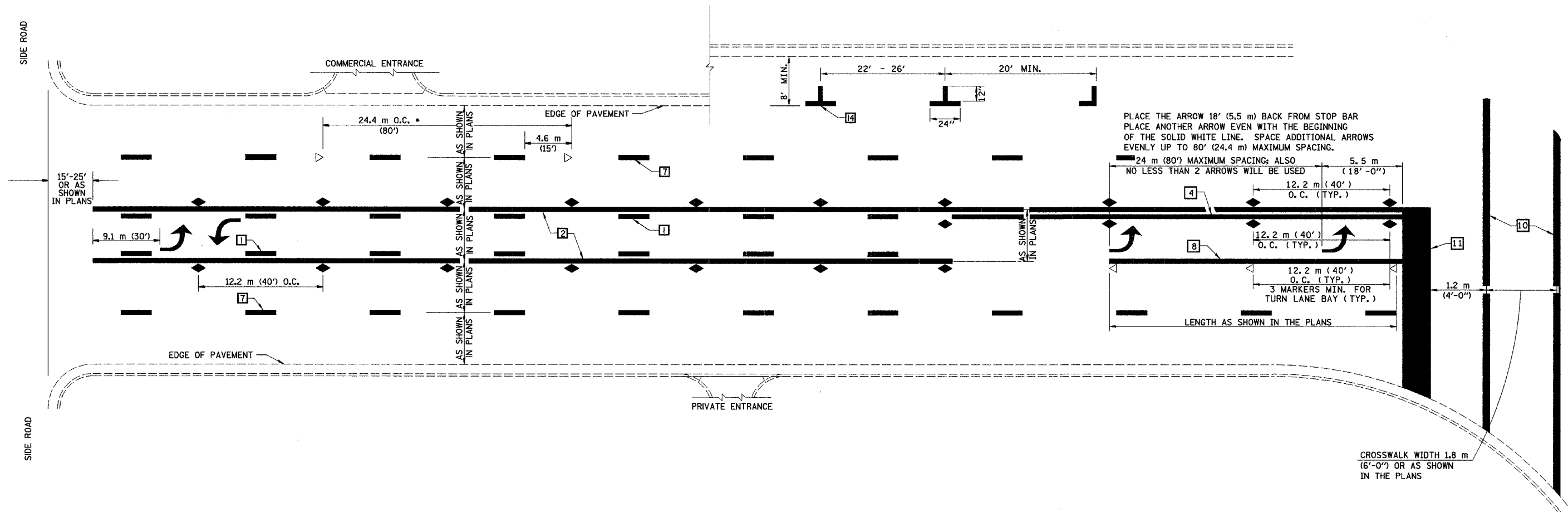


TYPICAL APPLICATIONS OF PAVEMENT MARKINGS AND MARKERS



PLAN	SURVEYED	DATE
	DESIGNED	
	CHECKED	
	BY	
	DATE	
	NO.	

SPECIAL NOTES:

TURN ARROW PAIRS SHALL BE PLACED AT 75 m (250') INTERVALS AND SHALL BE EVENLY SPACED BETWEEN BOTH ENDS OF THE BIDIRECTIONAL LEFT TURN LANE.

THE SOLID YELLOW PAVEMENT MARKINGS [2] SHOULD GENERALLY START OR END NEAR THE RADIUS POINT OF EACH STREET RETURN EXCEPT WHERE ONE OR BOTH ENDS WOULD INCLUDE STOP BARS.

THE SKIP-DASH PAVEMENT MARKINGS [1] OR [7] SHOULD BE CENTERED BETWEEN BOTH ENDS OF EACH CITY BLOCK AND SHALL BE PLACED SO THEY LINE UP ACROSS FROM EACH OTHER. SEE EXAMPLE ABOVE.

* REDUCE TO 12.2 METERS (40 FEET) O.C. ON CURVES WHERE ADVISORY SPEEDS ARE 15 kph (10 MPH) LOWER THAN POSTED SPEEDS.

** WHERE DOUBLE LANE LINE MARKERS ARE SPECIFIED, THEY SHALL BE SPACED AS SHOWN ABOVE.

All dimensions are in millimeters (Inches) unless otherwise shown.

DESIGNED	J.M.H.	6/88
CHECKED	C.T.D.	6/88
CADD NO.	F-5.25	

REVISIONS	
NAME	DATE
G.A.M.	11/95
CHECKED D.L.P.	12/95

REVISIONS	
NAME	DATE
D.L.P.	8/97
GEOMETRICS	6/01

REVISIONS	
NAME	DATE

CITY OF DANVILLE, ILLINOIS
WINTER AVENUE RECONSTRUCTION

IDOT DISTRICT 5
CADD DETAILS

SCALE: N/A
DRAWN BY: SRS
DATE: 12/21/06
CHECKED BY: MBF