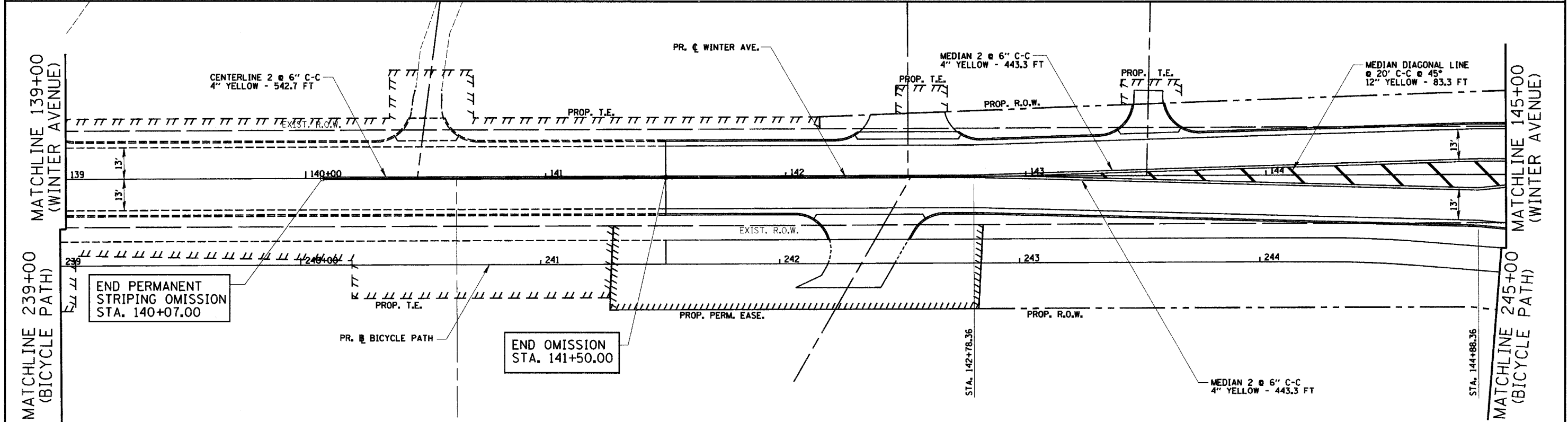
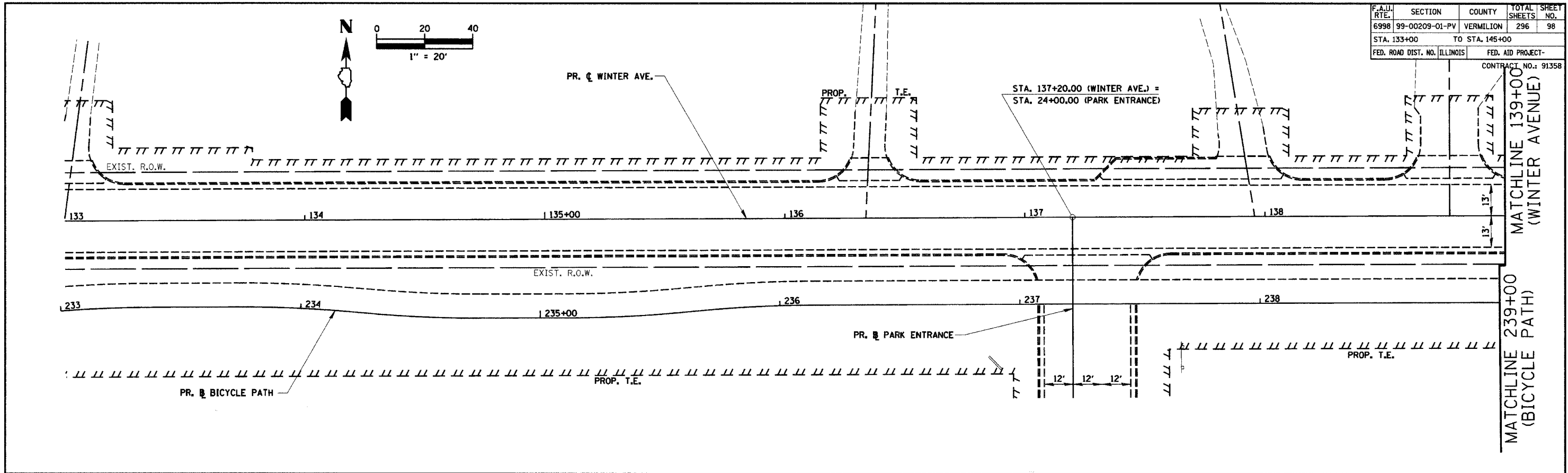


PLAN	DATE
SURVEYED	
DESIGNED	
CHECKED	
BY	
NO.	
DATE	
BY	
NO.	
DATE	
BY	
NO.	
DATE	

F.A.I. RTE.	SECTION	COUNTY	TOTAL SHEETS	SHEET NO.
6998	99-00209-01-PV	VERMILION	296	98
STA. 133+00	TO STA. 145+00			
FED. ROAD DIST. NO. ILLINOIS	FED. AID PROJECT-		CONTRACT NO.: 91358	



END PERMANENT STRIPING OMISSION STA. 140+07.00

END OMISSION STA. 141+50.00

ALL PAVEMENT MARKINGS ARE THERMOPLASTIC UNLESS OTHERWISE NOTED

REVISIONS	
NAME	DATE

CITY OF DANVILLE, ILLINOIS
**WINTER AVENUE RECONSTRUCTION
 PROPOSED PAVEMENT MARKING PLAN
 WINTER AVENUE/BICYCLE PATH
 STA. 133+00 TO STA. 145+00**

SCALE: 1" = 20' DATE: 12/21/06
 DRAWN BY: NIL CHECKED BY: MBF