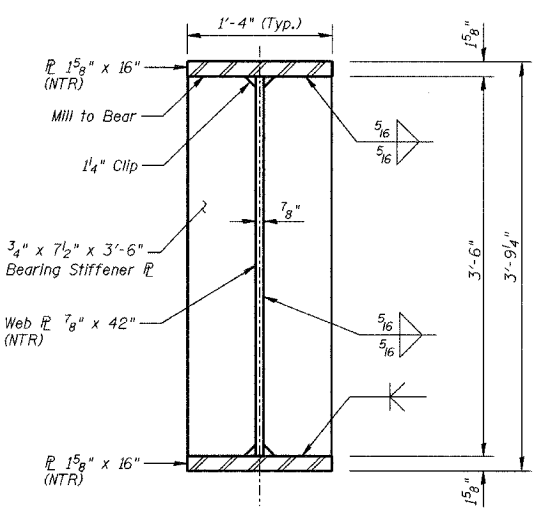


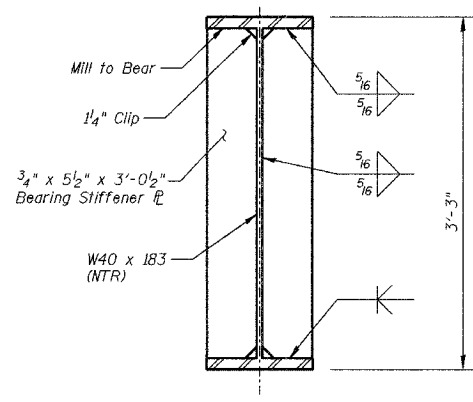
**FRAMING PLAN**

**MOMENT & SHEAR TABLE**

LOAD DESCRIPTION	W40x183 SPAN 1 & 3		42" WEB PLATE GIRDER SPAN 2	
	MOMENT	SHEAR	MOMENT	SHEAR
DEAD LOAD	250.2 ft-K	26.3 K	552.1 ft-K	39.6 K
LIVE LOAD	681.0 ft-K	78.9 K	1143.9 ft-K	93.5 K
IMPACT	289.8 ft-K	33.6 K	454.8 ft-K	37.2 K
CENTRIFUGAL FORCE	137.8 ft-K	16.0 K	227.3 ft-K	18.6 K
ECCENTRICITY	197.1 ft-K	34.3 K	31.2 ft-K	13.5 K
<b>TOTAL</b>	<b>1555.9 ft-K</b>	<b>189.1 K</b>	<b>2409.3 ft-K</b>	<b>202.2 K</b>
NET I	13,114.1 in <sup>4</sup>		29,706.3 in <sup>4</sup>	
NET S	673 in <sup>3</sup>		1313 in <sup>3</sup>	
f <sub>b</sub> (NET)	27.7 ksi		22.0 ksi	
GROSS I	13,300.0 in <sup>4</sup>		30,155.0 in <sup>4</sup>	
GROSS S	683 in <sup>3</sup>		1,333 in <sup>3</sup>	
f <sub>b</sub> (GROSS)	27.3 ksi		21.7 ksi	



**PLATE GIRDER SECTION (SPAN 2)**



**W40 x 183 SECTION (SPANS 1 & 3)**

**Notes**

- W40 x 83 and plate girders shall be A709 Gr. 50. These members shall conform to the Supplemental Requirements for Notch Toughness, Zone 2.
- Diaphragms, connection angles and bearing stiffeners are A709 Gr. 36.
- The flange-to-web weld for the deck plate girder shall be made using continuous, complete joint penetration (CJP). The weld shall be made by machine welding.
- If girders are set individually, all diaphragms shall be installed as steel is erected and secured with erection pins and bolts, except as otherwise noted. Individual diaphragms at supports may be temporarily disconnected to install bearing anchor rods.

FRAMING PLAN AND MOMENT & SHEAR TABLE			Sheet No.
Date	Designed: MJP	<b>CSX TRANSPORTATION R.R. OVER WINTER AVE.                      MP OZA 12L6 SECTION 99-00209-01-PV                      CITY OF DANVILLE, IL                      VERMILION COUNTY                      STA. 5527+59.81                      PROP. STR. NO. 092-6039</b>	<b>7</b> of 24
Revisions	Drawn: BKN		
	Checked: KWB		
	Approved: KWB		
Prepared by:	<b>URS</b> 345 East Ash Avenue, Suite B Decatur, IL 62526		URS Job No. <b>36430866</b>