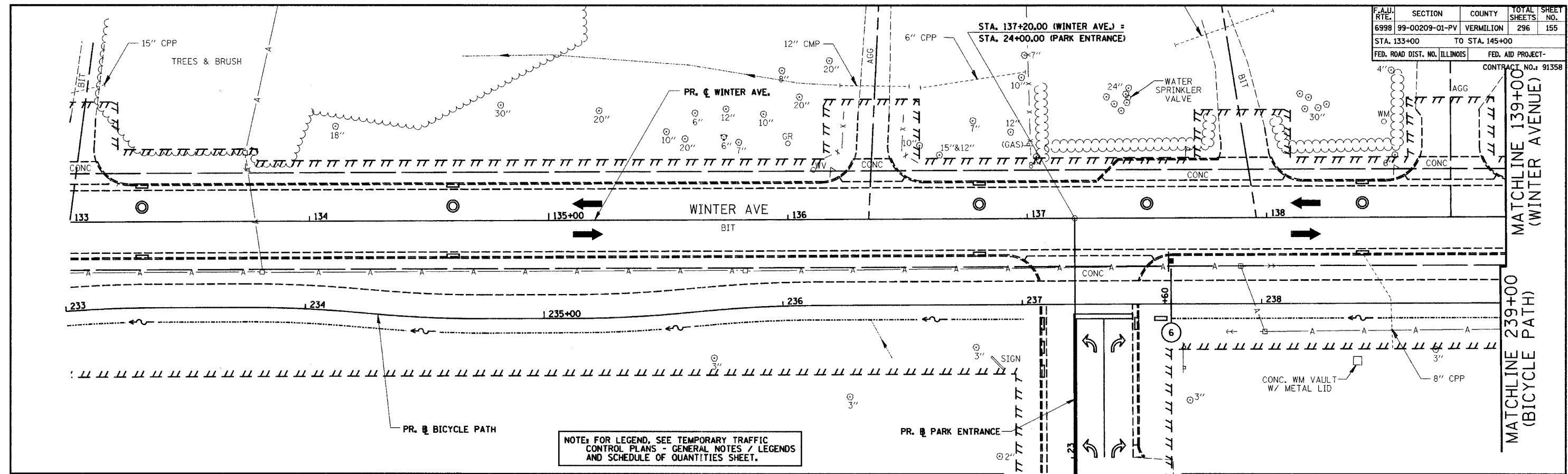
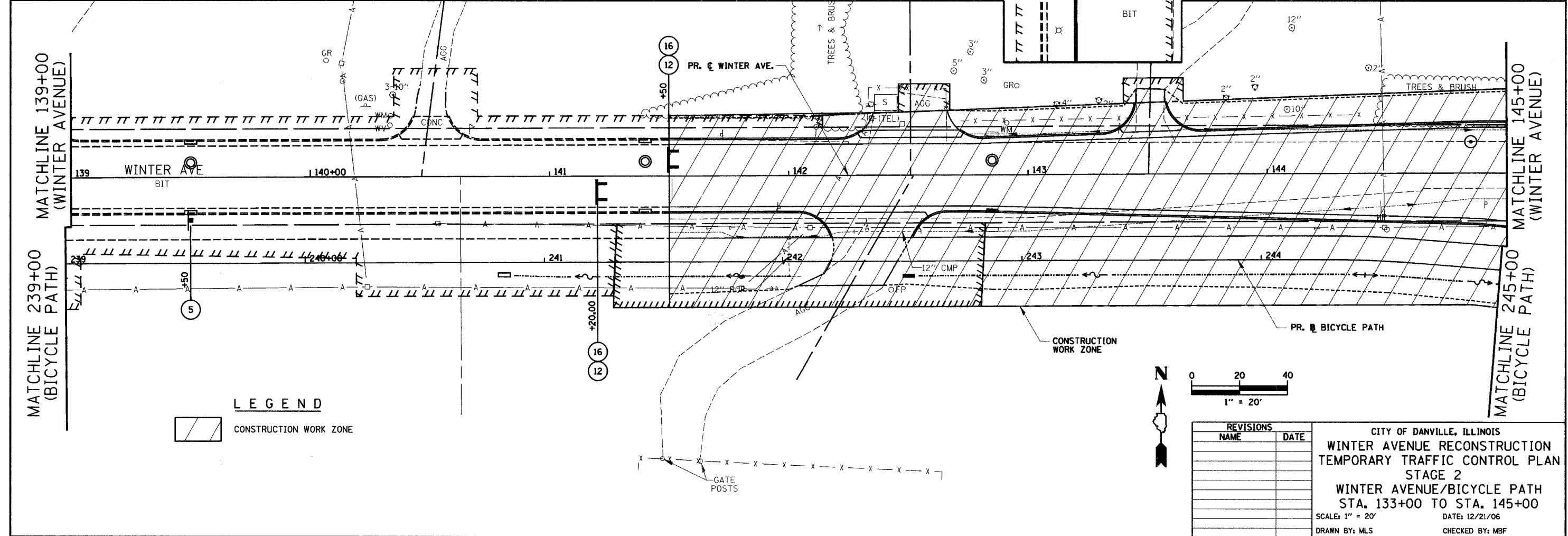


PLAN	SURVEYED	DATE
	PLOTTED	BY
	CHECKED	
	RE. OF WAY CHECKED	
	ROAD FILE NAME	
	NO.	

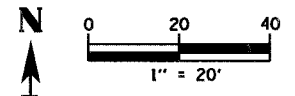
F.A.A.I. NO.	SECTION	COUNTY	TOTAL SHEETS	SHEET NO.
6998	99-00209-01-PV	VERMILION	296	155
STA. 133+00	TO STA. 145+00			
FED. ROAD DIST. NO. ILLINOIS	FED. AID PROJECT-		CONTRACT NO. 91358	



NOTE: FOR LEGEND, SEE TEMPORARY TRAFFIC CONTROL PLANS - GENERAL NOTES / LEGENDS AND SCHEDULE OF QUANTITIES SHEET.



LEGEND
 CONSTRUCTION WORK ZONE



REVISIONS	
NAME	DATE

CITY OF DANVILLE, ILLINOIS
WINTER AVENUE RECONSTRUCTION
TEMPORARY TRAFFIC CONTROL PLAN
STAGE 2
WINTER AVENUE/BICYCLE PATH
STA. 133+00 TO STA. 145+00
 SCALE: 1" = 20' DATE: 12/21/06
 DRAWN BY: MLS CHECKED BY: MBF

MATCHLINE 239+00 (BICYCLE PATH)

MATCHLINE 139+00 (WINTER AVENUE)

MATCHLINE 245+00 (BICYCLE PATH)

MATCHLINE 145+00 (WINTER AVENUE)

MATCHLINE 139+00 (WINTER AVENUE)

MATCHLINE 239+00 (BICYCLE PATH)