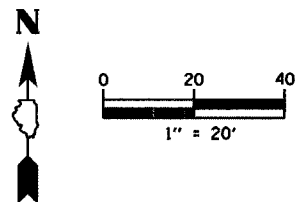
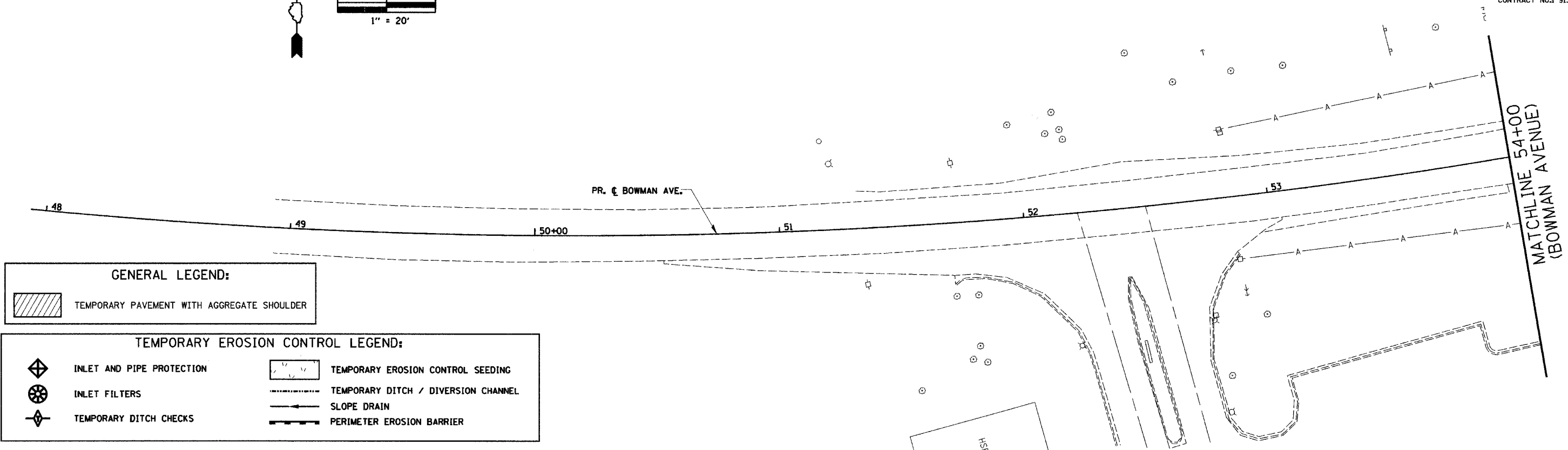


| | | | | |
|------------------------------|----------------|-------------------|--------------|-----------|
| F.A.W. R.T.E. | SECTION | COUNTY | TOTAL SHEETS | SHEET NO. |
| 6998 | 99-00209-01-PV | VERMILION | 296 | 186 |
| STA. 48+00 | | TO STA. 60+00 | | |
| FED. ROAD DIST. NO. ILLINOIS | | FED. AID PROJECT- | | |
| CONTRACT NO.: 91358 | | | | |



| | |
|--------------------|------|
| PLAN | DATE |
| SURVEYED | BY |
| DESIGNED | BY |
| CHECKED | BY |
| IN CHARGE | BY |
| NOTE BOOK | NO. |
| RT. OF WAY CHECKED | DATE |
| ADD FILE NAME | |

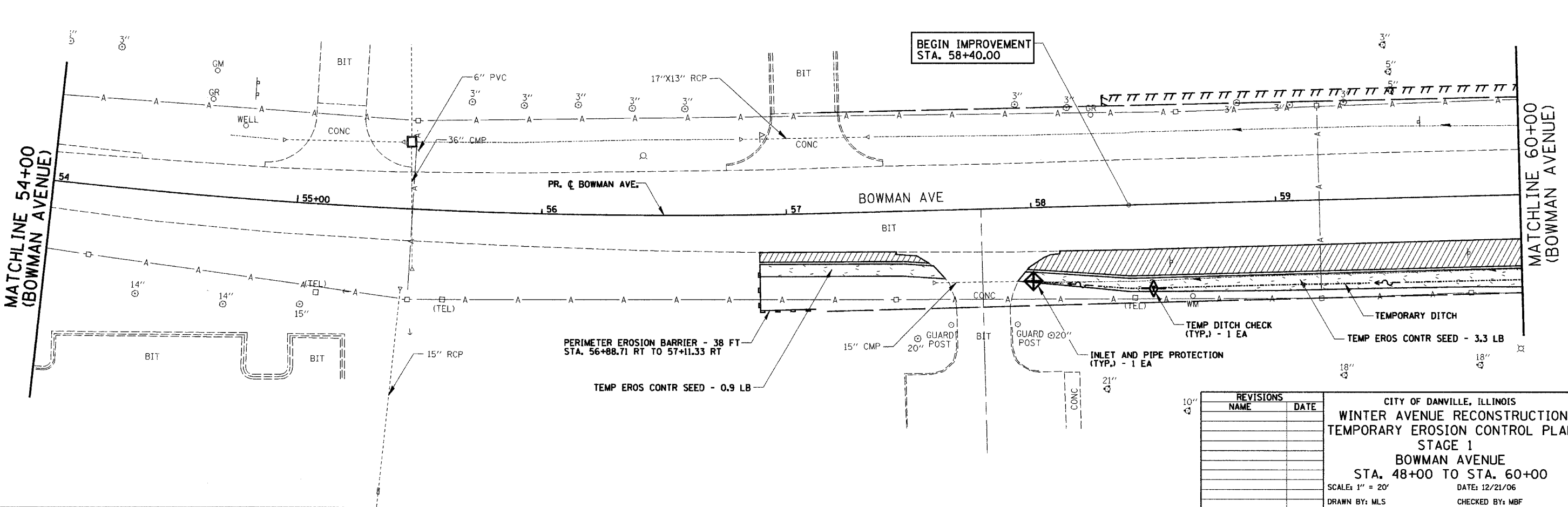


GENERAL LEGEND:

TEMPORARY PAVEMENT WITH AGGREGATE SHOULDER

TEMPORARY EROSION CONTROL LEGEND:

| | |
|---------------------------|-------------------------------------|
| INLET AND PIPE PROTECTION | TEMPORARY EROSION CONTROL SEEDING |
| INLET FILTERS | TEMPORARY DITCH / DIVERSION CHANNEL |
| TEMPORARY DITCH CHECKS | SLOPE DRAIN |
| | PERIMETER EROSION BARRIER |



| REVISIONS | |
|-----------|------|
| NAME | DATE |
| | |
| | |
| | |
| | |
| | |
| | |
| | |
| | |
| | |

CITY OF DANVILLE, ILLINOIS
WINTER AVENUE RECONSTRUCTION
TEMPORARY EROSION CONTROL PLAN
STAGE 1
BOWMAN AVENUE
STA. 48+00 TO STA. 60+00
 SCALE: 1" = 20' DATE: 12/21/06
 DRAWN BY: MLS CHECKED BY: MBF