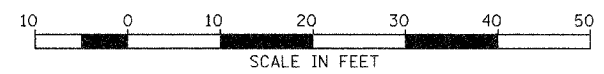
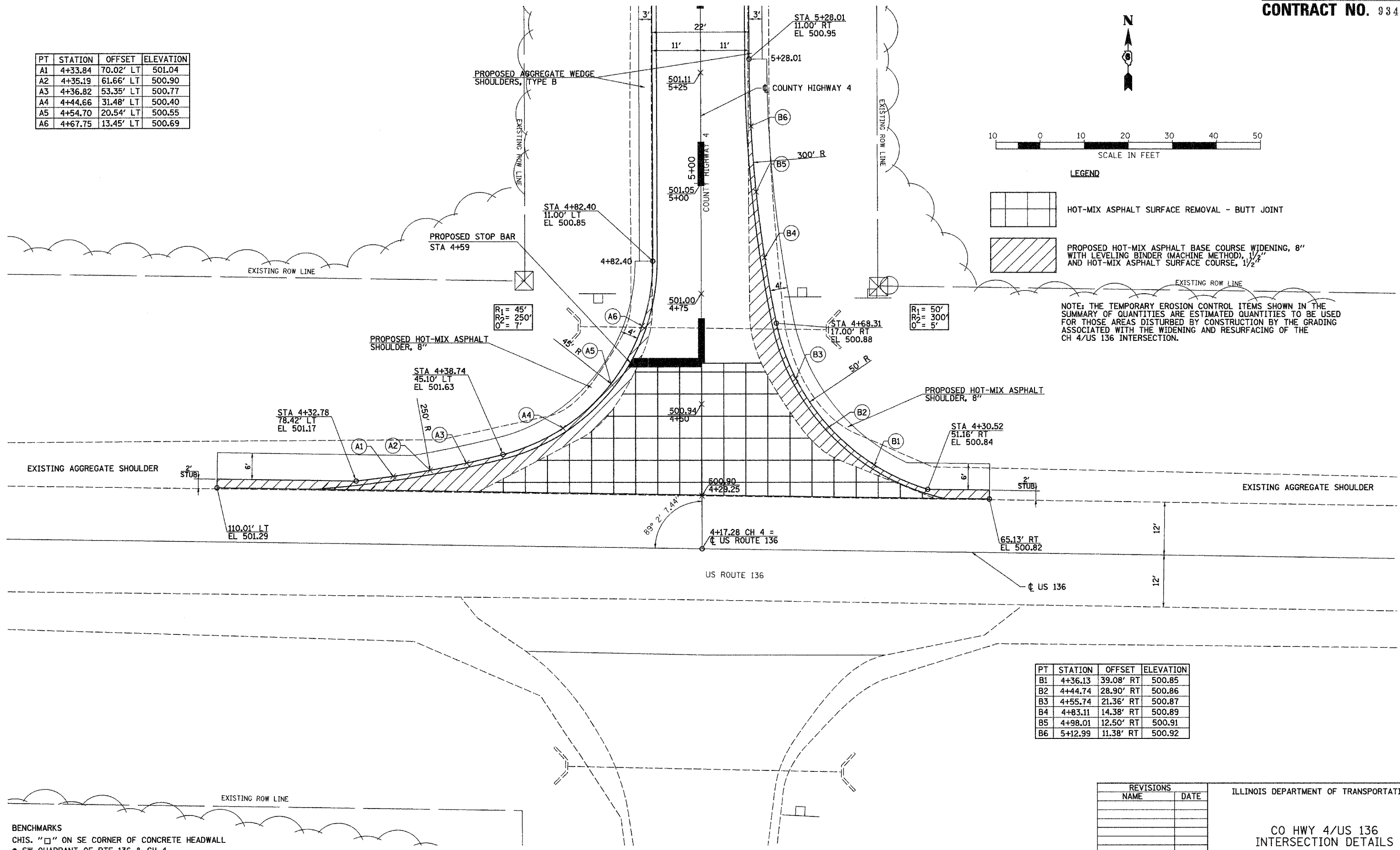


F.A.S. RTE	SECTION	COUNTY	TOTAL SHEETS	SHEET NO.
461	04-00001-03-RS	MASON	19	14
FED. ROAD DIST. NO.	ILLINOIS	PROJECT NO.		

CONTRACT NO. 93432

PT	STATION	OFFSET	ELEVATION
A1	4+33.84	70.02' LT	501.04
A2	4+35.19	61.66' LT	500.90
A3	4+36.82	53.35' LT	500.77
A4	4+44.66	31.48' LT	500.40
A5	4+54.70	20.54' LT	500.55
A6	4+67.75	13.45' LT	500.69



LEGEND

- HOT-MIX ASPHALT SURFACE REMOVAL - BUTT JOINT
- PROPOSED HOT-MIX ASPHALT BASE COURSE WIDENING, 8" WITH LEVELING BINDER (MACHINE METHOD), 1/2" AND HOT-MIX ASPHALT SURFACE COURSE, 1/2"

NOTE: THE TEMPORARY EROSION CONTROL ITEMS SHOWN IN THE SUMMARY OF QUANTITIES ARE ESTIMATED QUANTITIES TO BE USED FOR THOSE AREAS DISTURBED BY CONSTRUCTION BY THE GRADING ASSOCIATED WITH THE WIDENING AND RESURFACING OF THE CH 4/US 136 INTERSECTION.

PT	STATION	OFFSET	ELEVATION
B1	4+36.13	39.08' RT	500.85
B2	4+44.74	28.90' RT	500.86
B3	4+55.74	21.36' RT	500.87
B4	4+83.11	14.38' RT	500.89
B5	4+98.01	12.50' RT	500.91
B6	5+12.99	11.38' RT	500.92

BENCHMARKS
 CHIS. "□" ON SE CORNER OF CONCRETE HEADWALL
 @ SW QUADRANT OF RTE 136 & CH 4
 ELEV 499.15

NOTE: WB-55 DESIGN VEHICLE

REVISIONS	
NAME	DATE

ILLINOIS DEPARTMENT OF TRANSPORTATION

CO HWY 4/US 136 INTERSECTION DETAILS

DATE 11-22-06

DRAWN BY: _____
 CHECKED BY: _____