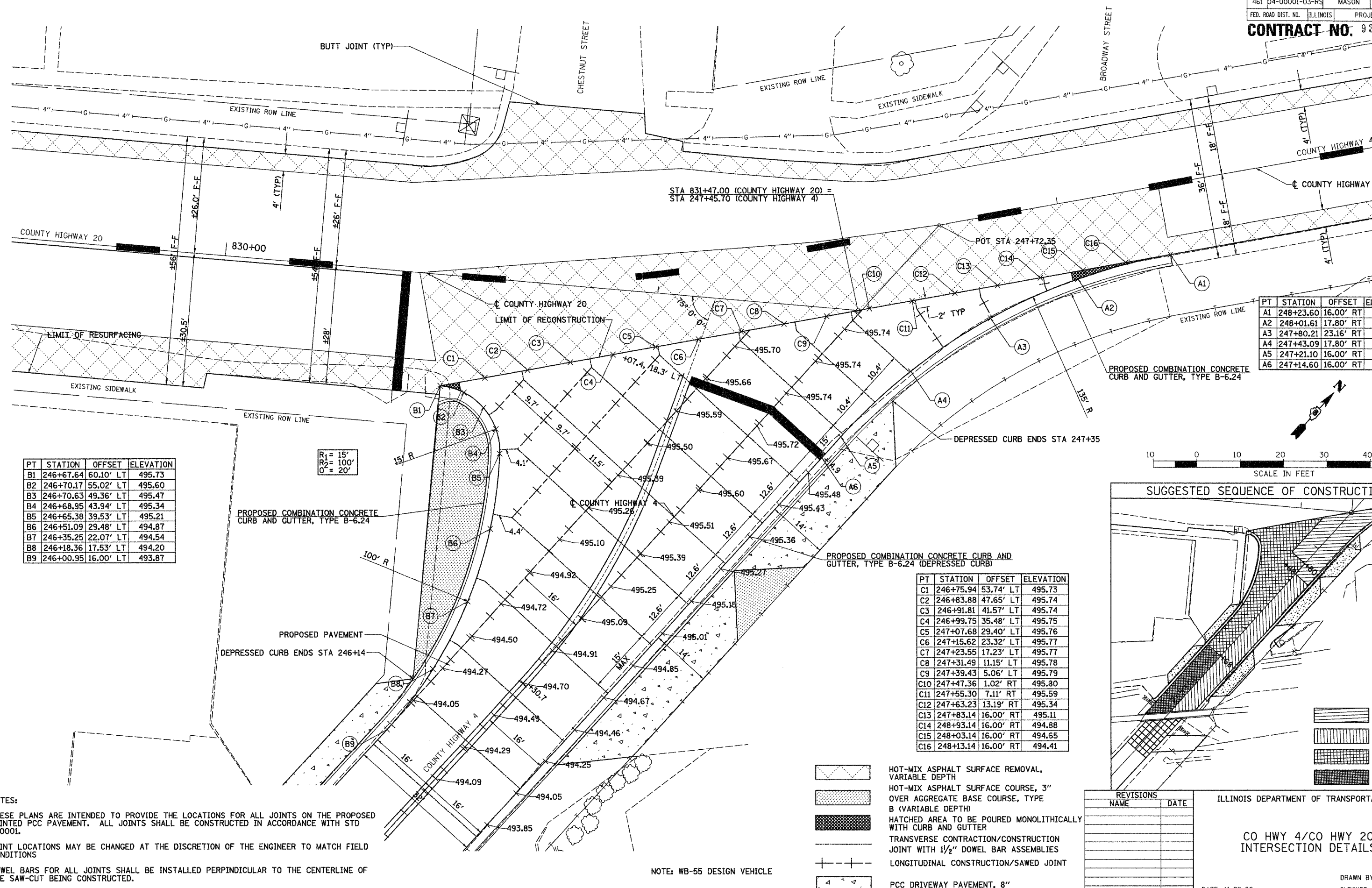


**CONTRACT NO. 93432**

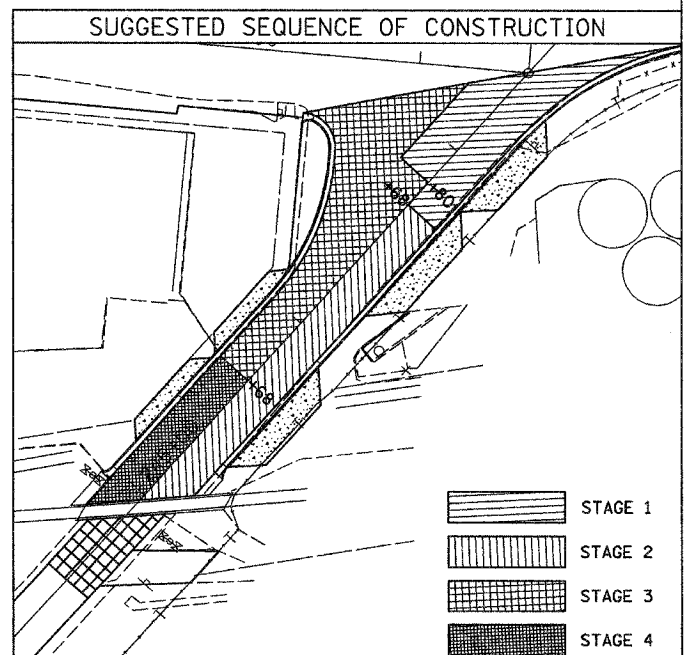


PT	STATION	OFFSET	ELEVATION
B1	246+67.64	60.10' LT	495.73
B2	246+70.17	55.02' LT	495.60
B3	246+70.63	49.36' LT	495.47
B4	246+68.95	43.94' LT	495.34
B5	246+65.38	39.53' LT	495.21
B6	246+51.09	29.48' LT	494.87
B7	246+35.25	22.07' LT	494.54
B8	246+18.36	17.53' LT	494.20
B9	246+00.95	16.00' LT	493.87

R<sub>1</sub> = 15'  
R<sub>2</sub> = 100'  
O = 20'

PT	STATION	OFFSET	ELEVATION
A1	248+23.60	16.00' RT	494.18
A2	248+01.61	17.80' RT	494.46
A3	247+80.21	23.16' RT	494.74
A4	247+43.09	17.80' RT	495.03
A5	247+21.10	16.00' RT	495.31
A6	247+14.60	16.00' RT	495.40

PT	STATION	OFFSET	ELEVATION
C1	246+75.94	53.74' LT	495.73
C2	246+83.88	47.65' LT	495.74
C3	246+91.81	41.57' LT	495.74
C4	246+99.75	35.48' LT	495.75
C5	247+07.68	29.40' LT	495.76
C6	247+15.62	23.32' LT	495.77
C7	247+23.55	17.23' LT	495.77
C8	247+31.49	11.15' LT	495.78
C9	247+39.43	5.06' LT	495.79
C10	247+47.36	1.02' RT	495.80
C11	247+55.30	7.11' RT	495.59
C12	247+63.23	13.19' RT	495.34
C13	247+83.14	16.00' RT	495.11
C14	248+93.14	16.00' RT	494.88
C15	248+03.14	16.00' RT	494.65
C16	248+13.14	16.00' RT	494.41



**NOTES:**  
 THESE PLANS ARE INTENDED TO PROVIDE THE LOCATIONS FOR ALL JOINTS ON THE PROPOSED JOINTED PCC PAVEMENT. ALL JOINTS SHALL BE CONSTRUCTED IN ACCORDANCE WITH STD 420001.  
 JOINT LOCATIONS MAY BE CHANGED AT THE DISCRETION OF THE ENGINEER TO MATCH FIELD CONDITIONS.  
 DOWEL BARS FOR ALL JOINTS SHALL BE INSTALLED PERPENDICULAR TO THE CENTERLINE OF THE SAW-CUT BEING CONSTRUCTED.

NOTE: WB-55 DESIGN VEHICLE

- HOT-MIX ASPHALT SURFACE REMOVAL, VARIABLE DEPTH
- HOT-MIX ASPHALT SURFACE COURSE, 3" OVER AGGREGATE BASE COURSE, TYPE B (VARIABLE DEPTH)
- HATCHED AREA TO BE POURED MONOLITHICALLY WITH CURB AND GUTTER
- TRANSVERSE CONTRACTION/CONSTRUCTION JOINT WITH 1/2" DOWEL BAR ASSEMBLIES
- LONGITUDINAL CONTRACTION/SAWED JOINT
- PCC DRIVEWAY PAVEMENT, 8"

REVISIONS	
NAME	DATE

ILLINOIS DEPARTMENT OF TRANSPORTATION  
 CO HWY 4/CO HWY 20 INTERSECTION DETAILS  
 DATE: 11-22-06  
 DRAWN BY:  
 CHECKED BY: