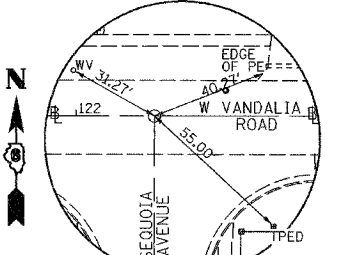
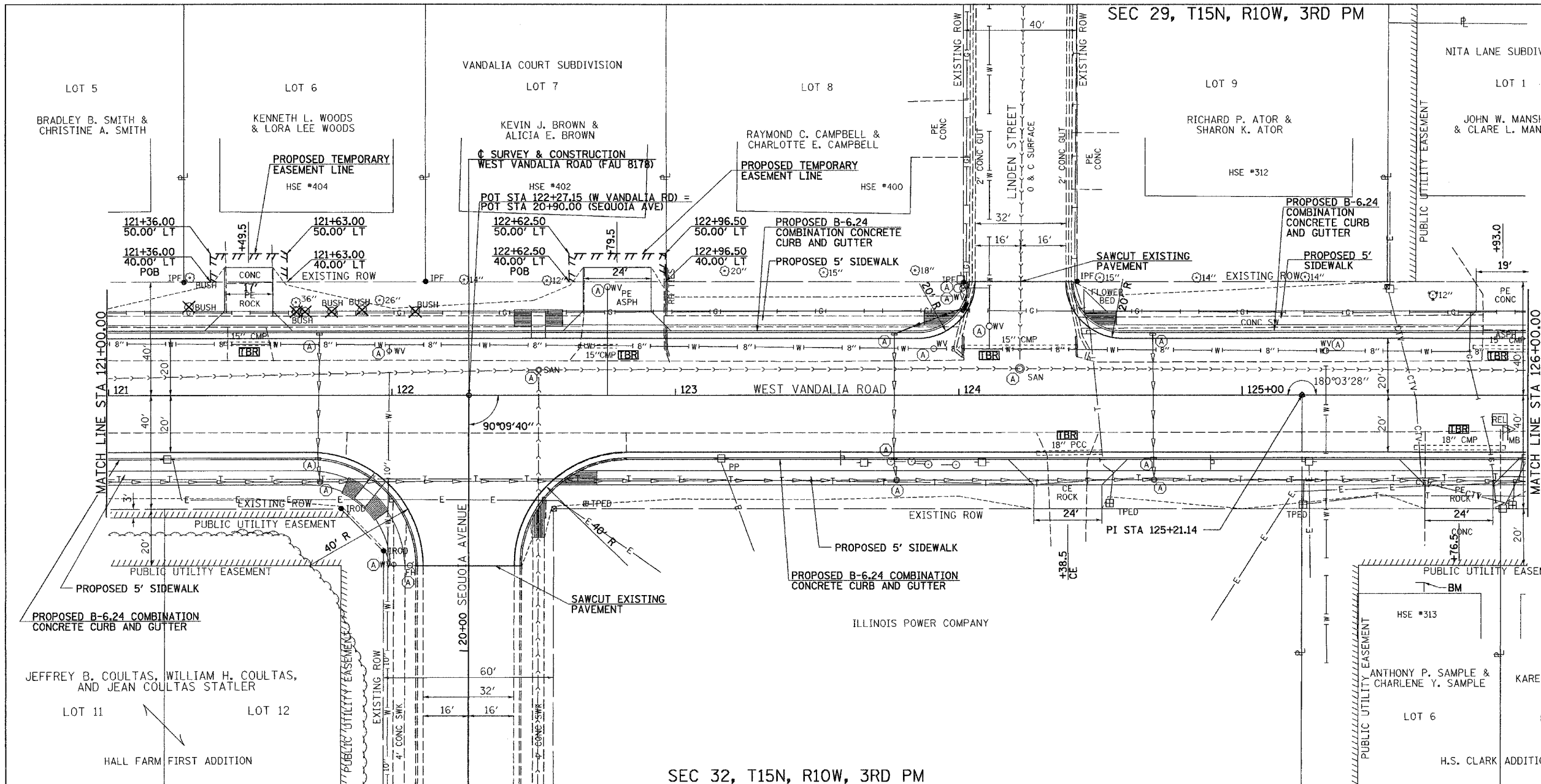
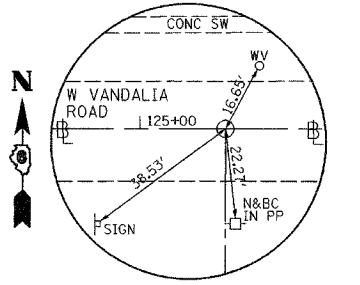


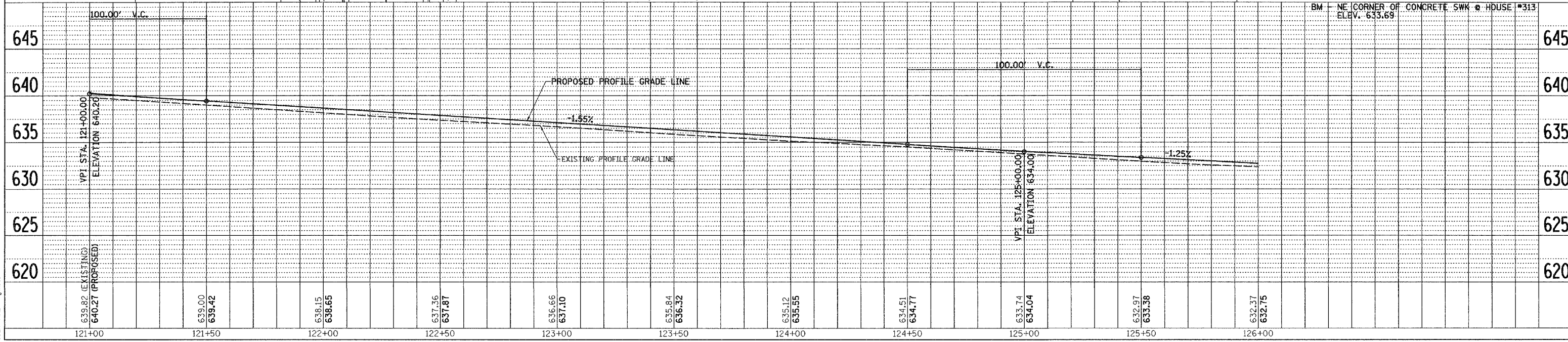
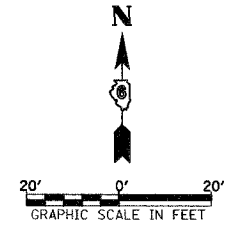
F.A.U. RTE.	SECTION	COUNTY	TOTAL SHEETS	SHEET NO.
8178	05-00016-01-PV	MORGAN	31	10
STA. 121+00		TO STA. 125+00		
FED. ROAD DIST. NO.		ILLINOIS FED. AID PROJECT		



POT STA 122+27.15 (W VANDALIA RD)
= POT STA 20+90.00 (SEQUOIA AVE)
N - 1107766.302 E - 2277365.744



PI STA 125+21.14
N - 1107765.557 E - 2277659.727
PK NAIL NE COR., NW 1/4, NE 1/4, SEC. 32-15-10



WEST VANDALIA RD, PLAN AND PROFILE, STA 121+00 TO STA 126+00

DATE	BY	REVISION

DATE	BY	REVISION

PLOT DATE = 01/25/2007
FILE NAME = WVA24R2448RPA3.dgn
PLOT SCALE = 20.0000 / 1" = 40.0000'
USER NAME = jmh10