

STATE OF ILLINOIS
DEPARTMENT OF TRANSPORTATION
DIVISION OF HIGHWAYS
PLANS FOR PROPOSED
SURFACE TRANSPORTATION/RURAL PROGRAM
LOCAL AGENCY PAVEMENT PRESERVATION

COUNTY	ROUTE	SECTION	TOTAL SHEETS	SHEET NO.
ADAMS	C.H. 11	06-00200-00-RS	10	1

INDEX OF SHEETS:

SHEET NO.	SHEET
1	TITLE SHEET
2	SUMMARY OF QUANTITIES
	GENERAL NOTES
3	TYPICAL CROSS SECTIONS
4-9	PLAN SHEETS
10	SIDE ROAD & ENTRANCE DETAILS
	BUTT JOINT DETAIL
STANDARD	701001-01
STANDARD	701006-02
STANDARD	701301-02
STANDARD	701306-01
STANDARD	702001-06
STANDARD	BLR 24-1

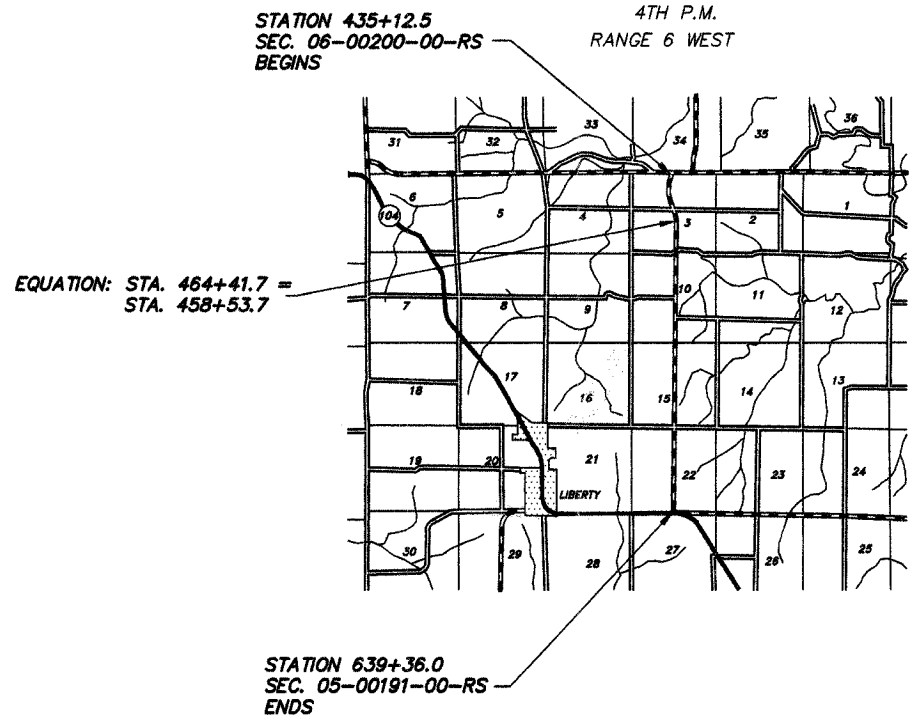
C.H. 11 SECTION 06-00200-00-RS ADAMS COUNTY
PROJECT NO. ACRS-1589(105) JOB NO. C-96-228-06



PROPOSED IMPROVEMENT MARKED THUS —

THESE PLANS WERE PREPARED BY ME OR BY A FULL-TIME MEMBER OF MY STAFF WORKING UNDER MY PERSONAL SUPERVISION.

SUBMITTED BY Rick A. Kluge DATE 1-11-07
COUNTY ENGINEER
LICENSE NO. 062-032961
LIC. EXPIRES 11/30/2007



PROPOSED IMPROVEMENT CONSISTS OF PLACING 2" POLYMERIZED HOT-MIX ASPHALT SURFACE COURSE, MIX "C", N50 ON THE EXISTING 22' ROADWAY WITH OTHER MISCELLANEOUS CONSTRUCTION

UTILITIES:
J.U.L.I.E. _____ 1-800-892-0123
AMERITECH _____ QUINCY, IL
ADAMS RURAL ELECTRICAL CO-OP _____ CAMP POINT, IL
ABS WATER DISTRICT _____ GOLDEN, IL

LOCATION MAP



GROSS LENGTH:
STA. 435+12.50 TO STA. 464+41.70 = 2,929.20 FT.
STA. 458+53.70 TO STA. 639+36.00 = 18,082.30 FT.
NET LENGTH TO BE IMPROVED: 21,011.50 FT. = 3.979 MILES

APPROVED	<u>January 11</u>	2007
	<u>Rick A. Kluge</u>	COUNTY ENGINEER
PASSED	<u>FEB. 22ND</u>	2007
	<u>[Signature]</u>	DISTRICT ENGINEER OF CONSTRUCTION
PASSED	<u>FEB 23</u>	2007
	<u>[Signature]</u>	DISTRICT ENGINEER OF LOCAL ROADS AND STREETS
RELEASING FOR BID BASED ON LIMITED REVIEW	<u>FEB 22</u>	2007
	<u>Christine M Reed</u>	DEPUTY DIRECTOR OF HIGHWAYS REGION FOUR ENGINEER
STATE OF ILLINOIS DEPARTMENT OF TRANSPORTATION		