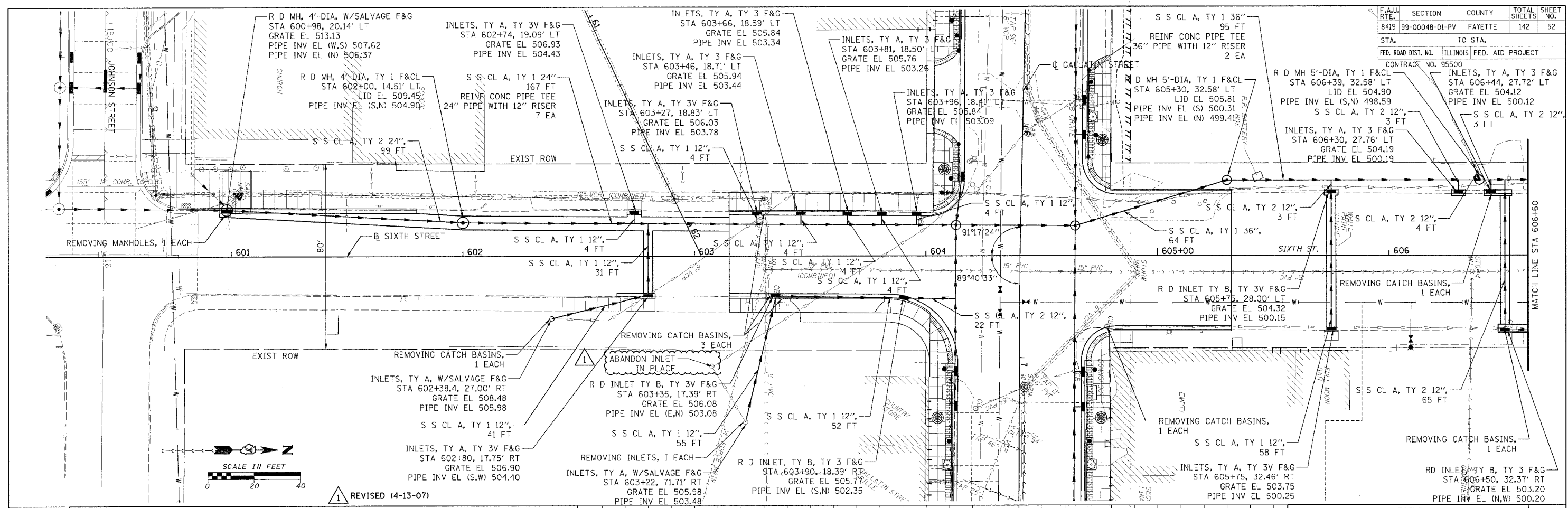


F.A.U. RTE.	SECTION	COUNTY	TOTAL SHEETS	SHEET NO.
8419	99-00048-01-PV	FAYETTE	142	52
STA.		TO STA.		
FED. ROAD DIST. NO.		ILLINOIS FED. AID PROJECT		
CONTRACT NO. 95500				

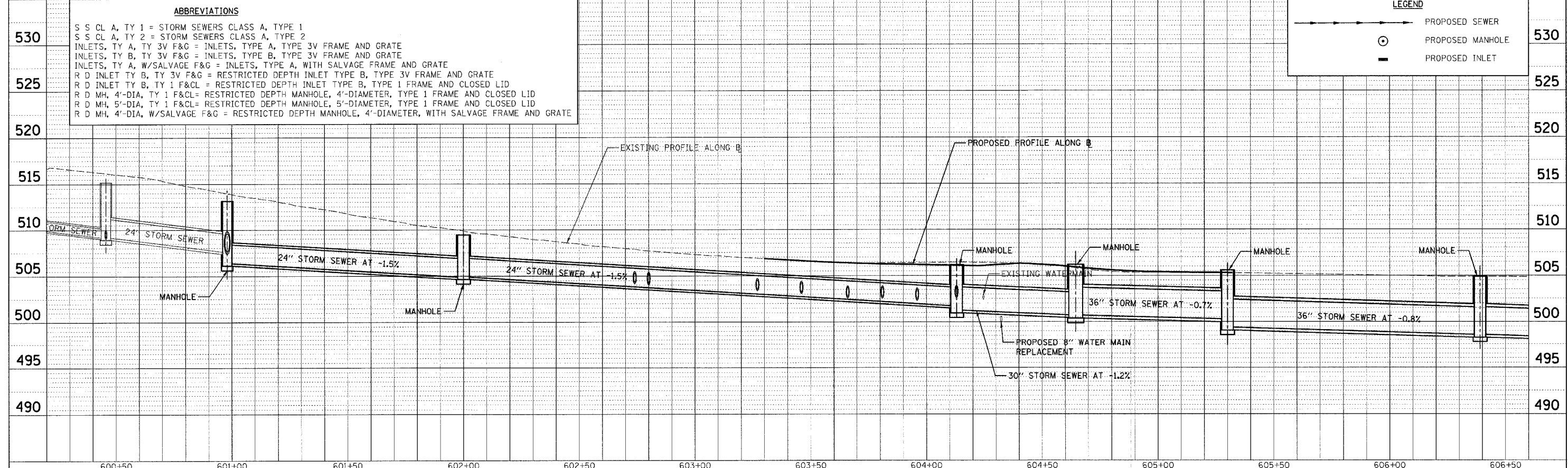


ABBREVIATIONS

S S CL A, TY 1	= STORM SEWERS CLASS A, TYPE 1
S S CL A, TY 2	= STORM SEWERS CLASS A, TYPE 2
INLETS, TY A, TY 3V F&G	= INLETS, TYPE A, TYPE 3V FRAME AND GRATE
INLETS, TY B, TY 3V F&G	= INLETS, TYPE B, TYPE 3V FRAME AND GRATE
INLETS, TY A, W/SALVAGE F&G	= INLETS, TYPE A, WITH SALVAGE FRAME AND GRATE
R D INLET TY B, TY 3V F&G	= RESTRICTED DEPTH INLET TYPE B, TYPE 3V FRAME AND GRATE
R D INLET TY B, TY 1 F&CL	= RESTRICTED DEPTH INLET TYPE B, TYPE 1 FRAME AND CLOSED LID
R D MH, 4'-DIA, TY 1 F&CL	= RESTRICTED DEPTH MANHOLE, 4'-DIAMETER, TYPE 1 FRAME AND CLOSED LID
R D MH, 5'-DIA, TY 1 F&CL	= RESTRICTED DEPTH MANHOLE, 5'-DIAMETER, TYPE 1 FRAME AND CLOSED LID
R D MH, 4'-DIA, W/SALVAGE F&G	= RESTRICTED DEPTH MANHOLE, 4'-DIAMETER, WITH SALVAGE FRAME AND GRATE

LEGEND

	PROPOSED SEWER	530
	PROPOSED MANHOLE	525
	PROPOSED INLET	520



DATE: _____ BY: _____
 PLAN NO. _____
 CHECKED: _____
 DATE: _____

DATE: _____ BY: _____
 PROFILE NO. _____
 CHECKED: _____
 DATE: _____

CADD FILE: 14612/ss_Sixth_01.dgn
 PLOTTED: 4/16/2007

Revised 4-17-07