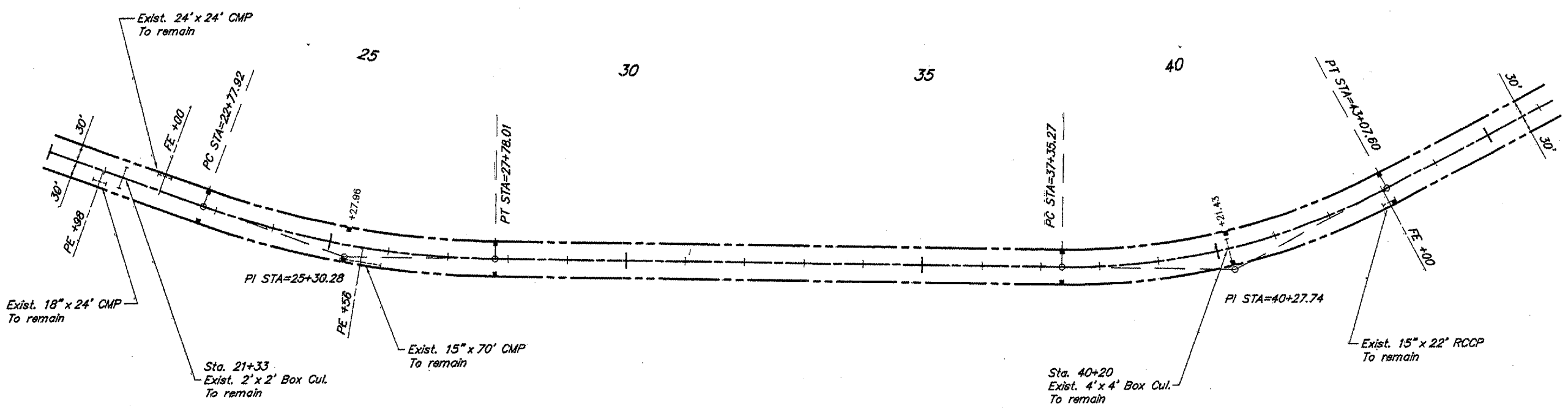
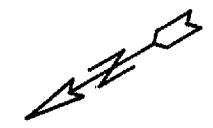


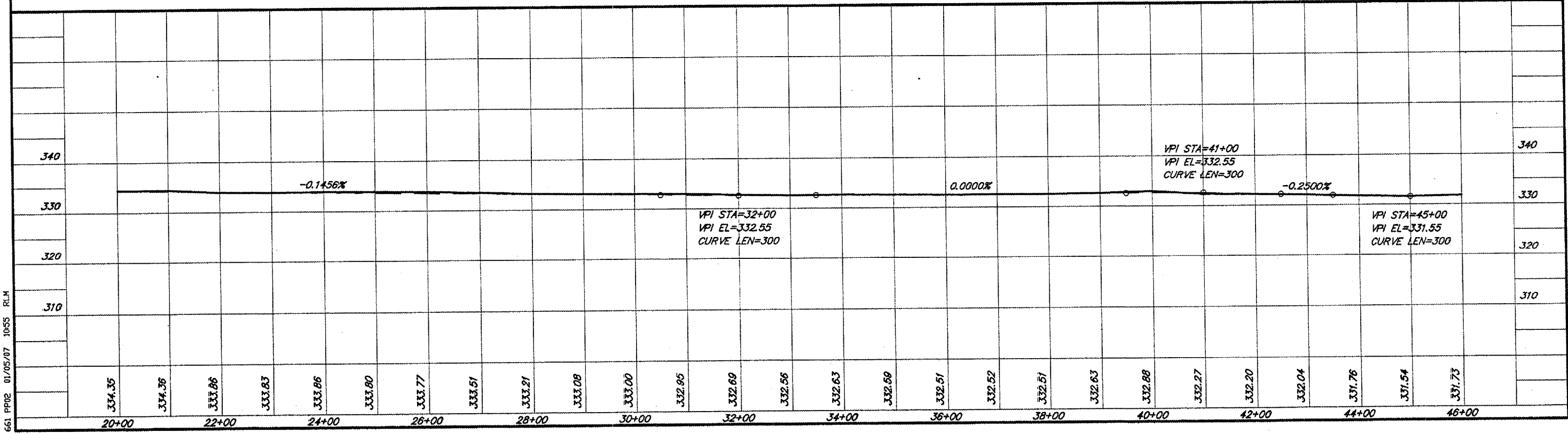
ROUTE	SECTION	CGUNTY	TOTAL SHEETS	SHEET NO.
FAS 946	05-00074-00-RS	ALEXANDER	15	5
PROJECT NO. RS-946 (106)			CONTRACT NO. 99287	

CURVE DATA
 $\Delta = 19^{\circ}00'00''$ $T = 252.36'$
 $D = 3^{\circ}47'58''$ $L = 500.08'$
 $R = 1508.04'$ $E = 20.97'$
 $S.E. = 0.062'/ft.$
 Attain Sta. 21+54 to Sta. 23+23
 Remove Sta. 27+33 to Sta. 29+02

CURVE DATA
 $\Delta = 28^{\circ}05'00''$ $T = 292.47'$
 $D = 5^{\circ}04'54''$ $L = 572.32'$
 $R = 1127.51'$ $E = 37.31'$
 $S.E. = 0.073'/ft.$
 Attain Sta. 35+95 to Sta. 37+89
 Remove Sta. 42+54 to Sta. 44+48



SCALES:
 1" = 200' HOR
 1" = 20' VER



661 PPO2 01/05/07 10:55 RLM