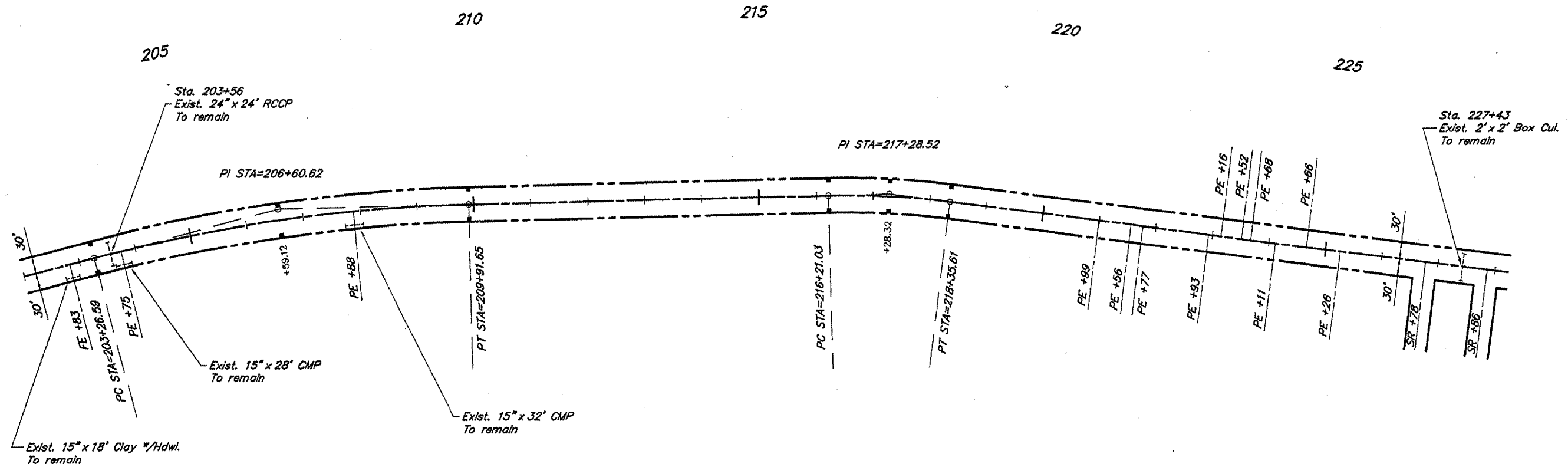
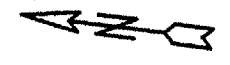


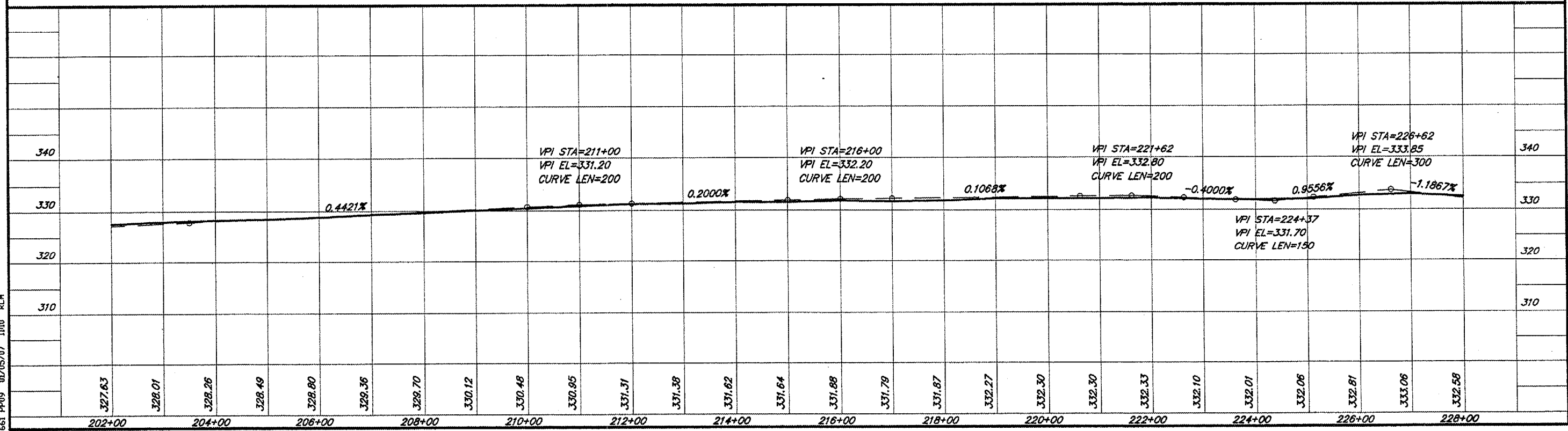
ROUTE	SECTION	COUNTY	TOTAL SHEETS	SHEET NO.
FAS 946	05-00074-00-RS	ALEXANDER	15	12
PROJECT NO. RS-946 (106)			CONTRACT NO. 99287	



CURVE DATA
 $\Delta = 13^{\circ}18'00''$ $T = 334.03'$
 $D = 1^{\circ}59'59''$ $L = 665.06'$
 $R = 2865.04'$ $E = 19.41'$
 $S.E. = 0.039'/ft.$
 Attain Sta. 202+36 to Sta. 203+55
 Remove Sta. 209+63 to Sta. 210+82

CURVE DATA
 $\Delta = 8^{\circ}35'00''$ $T = 107.49'$
 $D = 4^{\circ}00'00''$ $L = 214.58'$
 $R = 1432.39'$ $E = 4.03'$
 $S.E. = 0.064'/ft.$
 Attain Sta. 214+94 to Sta. 216+68
 Remove Sta. 217+89 to Sta. 219+63

SCALES:
 1" = 200' HOR
 1" = 20' VER



661 PP09 01/05/07 1110 RLM