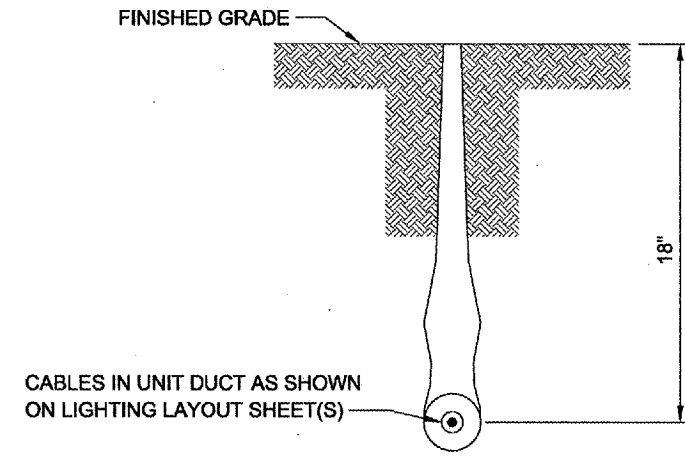


CABLE SPLICING NOTES:

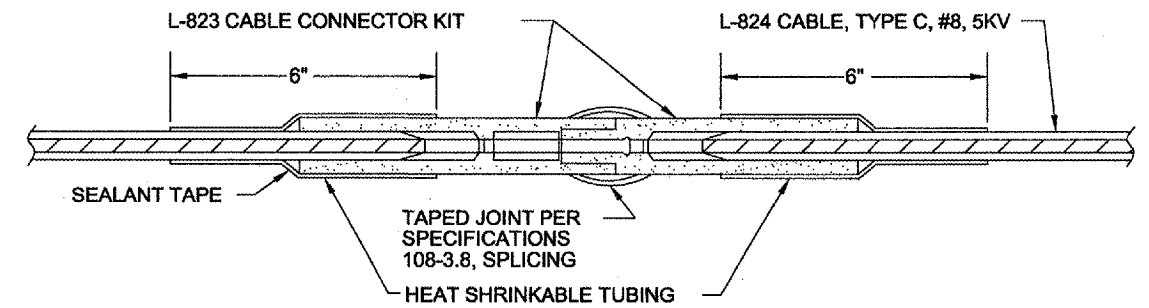
- HEAT-SHRINKABLE TUBING WILL NOT BE REQUIRED FOR ISOLATION TRANSFORMER PRIMARY CONNECTORS WHICH ARE MOLDED ON TO THE CABLE LEADS AT THE FACTORY.
- THE SEALANT TAPE AROUND THE CONNECTOR SHALL BE WATER INSOLUBLE, MAINTAINING ELASTICITY OVER A WIDE RANGE OF TEMPERATURE, AND SHALL BE RAYCHEM NO. S-1011 OR APPROVED EQUAL.
- HEAT-SHRINKABLE TUBING SHALL HAVE MINIMUM EXPANDED ID. OF 1.200", MAXIMUM RECOVERED ID. OF .300", MINIMUM EXPANDED WALL THICKNESS OF .04", NOMINAL RECOVERY WALL THICKNESS OF 0.17", A MASTIC WATER SEALANT COATING APPLIED ON THE INSIDE, AND SHALL BE RAYCHEM NO. WCS-300-6-S OR APPROVED EQUAL.
- MINIMUM LENGTH OF THE HEAT-SHRINKABLE TUBING SHALL BE 6".
- CLEAN THE CABLE INSULATION BEFORE APPLYING THE TUBING WITH A SOLVENT SPECIFIED BY THE TUBING MANUFACTURER.
- TO HEAT THE TUBING, USE PROPANE TORCH, OR ELECTRIC HEATER RECOMMENDED BY THE TUBING MANUFACTURER.
- BEGIN HEATING THE TUBING AT THE CENTER, GO COMPLETELY AROUND, THEN MOVE TOWARD THE ENDS.
- CONTINUE HEATING THE TUBING UNTIL IT SHRINKS COMPLETELY AND THE SEALANT IS BEING SQUEEZED OUT AT BOTH ENDS.
- IF THERE IS ANY NOTICEABLE HEAT DAMAGE TO THE CABLE OR THE TUBING, THE CONNECTION, INCLUDING THE DAMAGED PORTION, WILL BE REMOVED AND ANOTHER CONNECTION MADE.
- ALLOW THE CONNECTION TO COOL BEFORE HANDLING.
- INSTALL THE CONNECTIONS WITHOUT BENDING THEM.
- THE CONTRACTOR SHALL TRAIN THE AIRPORT MAINTENANCE PERSONNEL IN THE EMPLOYMENT OF CABLE CONNECTION WITH HEAT-SHRINKABLE TUBING. THE INSTRUCTION SHALL INCLUDE AT LEAST TWO ASSEMBLIES AND DISASSEMBLIES FOR SUCH CONNECTIONS.
- AFTER COMPLETION OF THE CONSTRUCTION, THE CONTRACTOR SHALL TRANSFER ONE OF THE HEATER UNITS TO THE AIRPORT MANAGER. IT SHALL BECOME THE PROPERTY OF THE AIRPORT.

HARRISBURG-RALEIGH AIRPORT
 IL PROJECT NO. HSB-3605
 AIP NO. 3-17-0050-B8
 ELECTRICAL DETAILS
 SHEET 7 OF 8

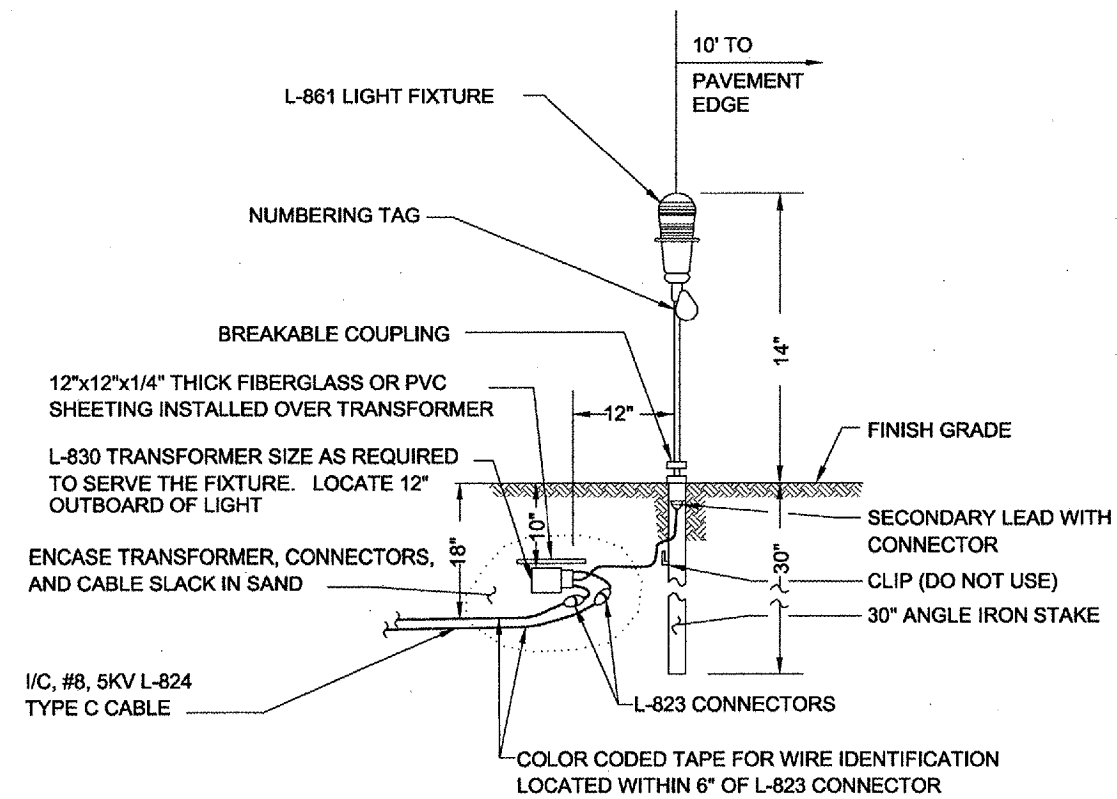
HA023



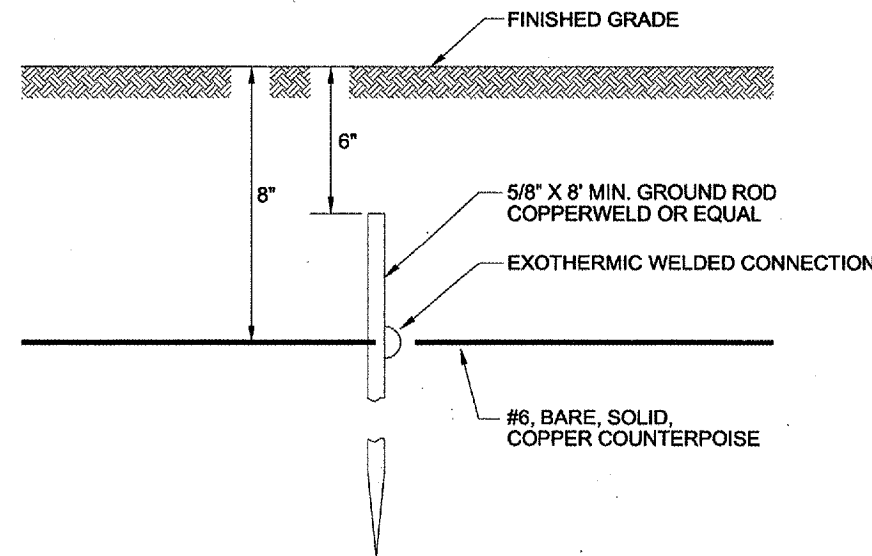
PLOWED CABLE
NO SCALE



DETAIL - CABLE SPLICING
NO SCALE



MEDIUM INTENSITY LIGHT - STAKE MOUNTED
NO SCALE



GROUND ROD
NO SCALE

SAFETY GROUND NOTES:

- A SAFETY GROUND MUST BE INSTALLED AT EACH RELOCATED FIXTURE.
- THE SAFETY GROUND MAY BE A #6 AWG BARE JUMPER CONNECTED TO THE GROUND LUG AT THE FIXTURE BASE OR STAKE TO A 5/8 INCH X 8 FOOT MINIMUM GROUND ROD INSTALLED BESIDE THE FIXTURE.
- THE COST OF ALL MATERIAL, EQUIPMENT AND LABOR NECESSARY TO INSTALL GROUND RODS WITH ALL RELOCATED FIXTURES IS CONSIDERED INCIDENTAL TO THE COSTS OF RELOCATING THE LIGHT FIXTURES.