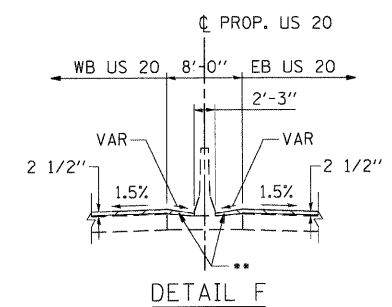
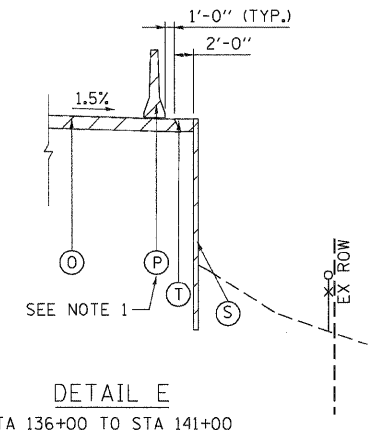


- NOTES:**
1. THE TEMPORARY CONCRETE BARRIER IS SECURED TO THE PAVEMENT USING SIX ANCHORING PINS.
 2. EXISTING DIMENSIONS SHOWN ARE FROM RECORD PLANS. ACTUAL DIMENSIONS MAY VARY.
 3. SEE GENERAL NOTES SHEET 3 FOR TEMPORARY PAVEMENT INFORMATION.
 4. THE EXISTING PAVEMENT SLABS ARE REINFORCED WITH WIRE MESH.
 5. EXISTING THICKNESSES SHOWN ARE FROM RECORD PLANS AND PAVEMENT CORES. ACTUAL THICKNESSES MAY VARY.



DETAIL F
STA 153+41.34 TO STA 156+02
•• HMA SURFACE SHALL BE MILLED TO EXPOSE PCC SHOULDER



DETAIL E
STA 136+00 TO STA 141+00

EXISTING LEGEND

- (A) PCC PAVEMENT (10" AND VARIES)
- (B) HMA SURFACE (3" AND VARIES)
- (C) HMA SHOULDER (8" AND VARIES)
- (D) HMA SHOULDER (6" AND VARIES)
- (E) FENCE
- (F) CONCRETE MEDIAN BARRIER & BASE
- (G) PCC SHOULDER (10" AND VARIES)
- (H) TOPSOIL REMOVAL (X")
- (I) HMA BASE COURSE
- (J) HMA PAVEMENT
- (K) PCC SIDE WALK
- (L) CURB AND GUTTER
- (M) CONCRETE MEDIAN
- (N) STEEL PLATE BEAM GUARDRAIL
- (O) TEMP PAVEMENT (SEE NOTE 3)
- (P) TEMPORARY CONCRETE BARRIER
- (Q) RETAINING WALL (CAST-IN-PLACE)
- (R) TEMP. SOIL RETENTION SYSTEM
- (S) SUBBASE GRANULAR MATERIAL, TYPE C (10")

PROPOSED LEGEND

- (U) PCC PAVEMENT
- (V) PCC PAVEMENT (11" AND VARIES)
- (W) HMA SURFACE (4" AND VARIES)
- (X) HMA SURFACE (5" AND VARIES)
- (Y) HMA SURFACE (6" AND VARIES)
- (Z) CONC CURB TB
- (AA) REMOVAL AND DISPOSAL OF UNSUITABLE MATERIAL
- (1) CONTINUOUSLY REINFORCED CONCRETE PAVEMENT 10 3/4"
- (2) PCC PVT 10 JOINTED
- (3) STABILIZED SUBBASE (HMA) 4 1/2"
- (4) AGGREGATE SUBGRADE 12"
- (5) HOT-MIX ASPHALT SURFACE COURSE, MIX "D", N70, 2"
- (6) SUB-BASE GRANULAR MATERIAL, TYPE B 12"
- (7) CONCRETE BARRIER, DOUBLE FACE, 32" HEIGHT
- (8) CONCRETE BARRIER BASE
- (9) AGG WEDGE SHLD TYPE B

- (10) COMB CC&G TB6.12
- (11) COMB CC&G TB6.24
- (12) COMB CC&G TM4.24
- (13) CONC CURB TB SPL
- (14) PC CONC SIDEWALK 5
- (15) SPBGR TY A 6FT POSTS
- (16) EMBANKMENT
- (17) RETAINING WALL (SEE STRUCTURAL PLANS)
- (18) DRILL AND GROUT #6 TIE BARS
- (19) TOPSOIL FURNISH AND PLACE, 6"
- (20) TOPSOIL FURNISH AND PLACE, 10"

- (21) HOT-MIX ASPHALT SURFACE COURSE, MIX "D", N70, 1 3/4"
- (22) HOT-MIX ASPHALT BASE COURSE, 8"
- (23) SHOULDER RUMBLE STRIPS, 16"
- (24) AGGREGATE SURFACE COURSE, TYPE B, 4"
- (25) CONCRETE MEDIAN SURFACE, 4 INCH
- (26) CONCRETE MEDIAN, TYPE SB (SPECIAL)
- (27) POLY. HMA SURFACE COURSE, MIX "F", N90 1 3/4"
- (28) CHAIN LINK FENCE, 4"
- (29) POLY. LEVELING BINDER (MM), IL-4.75, N50 3/4" (MIN)
- (30) HOT-MIX ASPHALT SURFACE COURSE, MIX "D", N70, 3"
- (31) POLY. HMA SURFACE COURSE, MIX "F", N90 2"
- (32) COMB CC&G TB6.06

- (33) AGGREGATE SHOULDERS, TYPE B 4"
- (34) SEEDING (SEE LANDSCAPING PLANS)
- (35) PCC SHOULDERS 10 3/4"
- (36) PCC SHOULDERS 10"
- (37) AGGREGATE SHOULDERS, TYPE B 10"
- (38) CONCRETE BARRIER, SINGLE FACE 42" HEIGHT (SPECIAL)
- (39) CORRUGATED MEDIAN
- (40) HOT-MIX ASPHALT BASE COURSE, 7"
- (41) SODDING, SALT TOLERANT

\D:\6845\XSET\1.DGN... \D:\6845\LEGEND.DGN
 12-12-2011 12:39:48
 BA\ZELKJ \NF5-0244\AV\VAULT\0-TRANS_07\2202\2379-001\CIVIL\CAD\6845\5SHEET\016845-SHT-TYPICAL\03.DGN

FILE NAME =	USER NAME = #USER#	DESIGNED - MRK	REVISED -	STATE OF ILLINOIS DEPARTMENT OF TRANSPORTATION FAP ROUTE 345 / US ROUTE 20				EXISTING TYPICAL SECTIONS U.S. ROUTE 20				F.A.P. RTE.	SECTION	COUNTY	TOTAL SHEETS	SHEET NO.
#FILE#		DRAWN - MRK	REVISED -									345	8R-R	KANE	794	23
PLOT SCALE = #SCALE#		CHECKED - DDH	REVISED -	SCALE: 1"=10'				SHEET NO. OF STA. 104+42.00 TO STA. 156+02.00				CONTRACT NO. 60H45				
PLOT DATE = #DATE#		DATE - 12/16/11	REVISED -	FED. ROAD DIST. NO. [ILLINOIS] FED. AID PROJECT												