

STATE OF ILLINOIS
DEPARTMENT OF TRANSPORTATION
DIVISION OF HIGHWAYS

**PROPOSED
HIGHWAY PLANS**

FAI ROUTE 94: INT 94/US 41 AT RUSSELL ROAD
SECTION 49-1(HB & HB-1)R

BRIDGE REPLACEMENT
LAKE COUNTY
C-91-019-11

F.A. RTE.	SECTION	COUNTY	TOTAL SHEETS	SHEET NO.
94	49-1(HB & HB-1)R	LAKE	225	1
ILLINOIS			CONTRACT NO. 60L76	

D-91-019-11

225+7 = 232

FOR INDEX OF SHEETS, SEE SHEET NO. 2

DESIGN DESIGNATION

RUSSELL ROAD
400(30) Minor Arterial (Urban) 4.84 (PCC-20)

TRAFFIC DATA

RUSSELL ROAD	FRONTAGE ROAD
EXISTING ADT: 3,500 (2007)	EXISTING ADT: 400 ESTIMATED (2007)
DESIGN ADT: 4,000 (2030)	DESIGN ADT: 450 (2030)
SPEED LIMIT: 45 MPH	SPEED LIMIT: 30 MPH

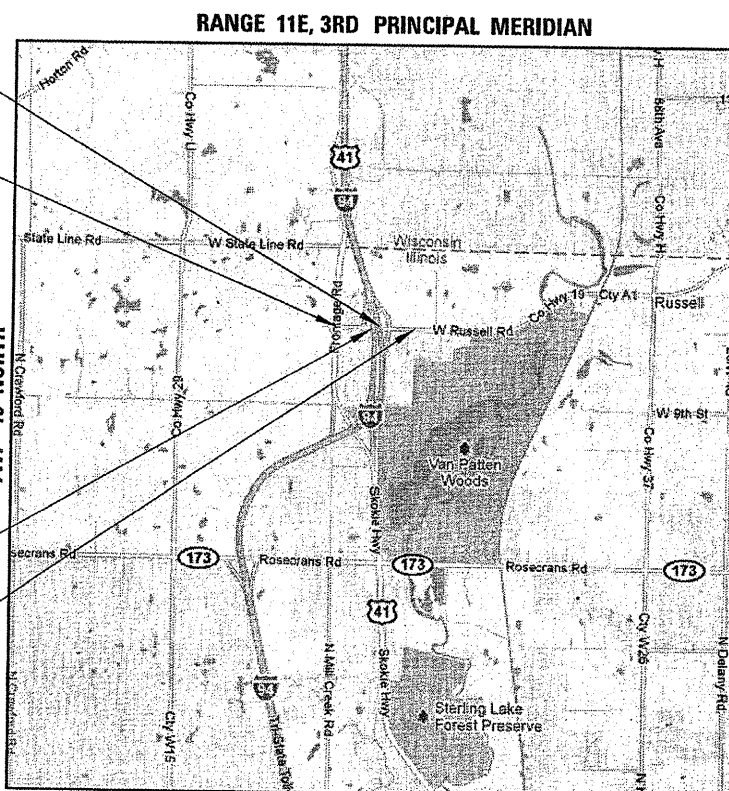
PROJECT LOCATED IN THE VILLAGE OF WADSWORTH

RUSSELL ROAD, F.A.I. I-94(NB)
STRUCTURE NO. 049-0534

PROJECT BEGINS
STA. 00 + 24.84

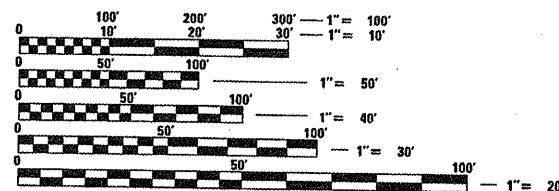
RUSSELL ROAD, F.A.I. I-94(SB)
STRUCTURE NO. 049-0533

PROJECT ENDS
STA. 29 + 22.28



SCALE 1" = 3000'

GROSS LENGTH = 2897.44 FT. = 0.549 MILE
NET LENGTH = 2502.34 FT. = 0.474 MILE



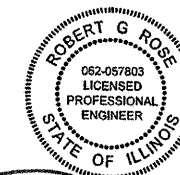
FULL SIZE PLANS HAVE BEEN PREPARED USING STANDARD ENGINEERING SCALES. REDUCED SIZED PLANS WILL NOT CONFORM TO STANDARD SCALES. IN MAKING MEASUREMENTS ON REDUCED PLANS, THE ABOVE SCALES MAY BE USED.

J.U.L.I.E.
JOINT UTILITY LOCATION INFORMATION FOR EXCAVATION
1-800-892-0123
OR 811



SIGNED: *Olufemi A. Oladeinde*
DATE: 1/25/2012
EXPIRES: 11/30/2012
SHEETS: 148-149, 151-157 & 161-166

PROJECT MANAGER: RAJENDRA SHAH (847)705-4555
CONTRACT NO. 60L76



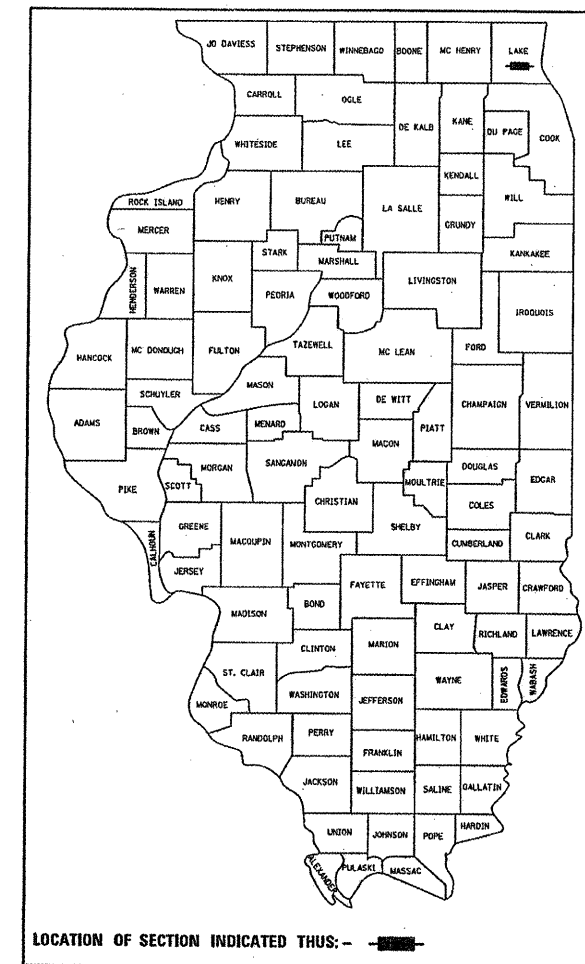
SIGNED: *Robert G. Rose*
DATE: JAN 24, 2012
EXPIRES: 11/30/2013
SHEETS: 1-90 & 179-225



SIGNED: *David L. Taggart*
DATE: JAN 24, 2012
EXPIRES: 11/30/2013
SHEETS: 91-112



SIGNED: *Brian L. Umbright*
DATE: Jan. 24, 2012
EXPIRES: 11/30/2012
SHEETS: 113-147, 150, 158-160 & 167-178



LOCATION OF SECTION INDICATED THUS: -

BOWMAN, BARRETT & ASSOCIATES INC.
CONSULTING ENGINEERS
Chicago, Illinois
312.228.0100
www.bandainc.com

STATE OF ILLINOIS
DEPARTMENT OF TRANSPORTATION
DIVISION OF HIGHWAYS

SUBMITTED: JAN 27 20 12
Diane O'Keefe
DEPUTY DIRECTOR OF HIGHWAYS, REGION ENGINEER
March 23 2012
John D. Baranzelli, P.E.
ENGINEER OF DESIGN AND ENVIRONMENT
March 23 2012
William P. Fisher
DIRECTOR OF HIGHWAYS, CHIEF ENGINEER

PRINTED BY THE AUTHORITY
OF THE STATE OF ILLINOIS