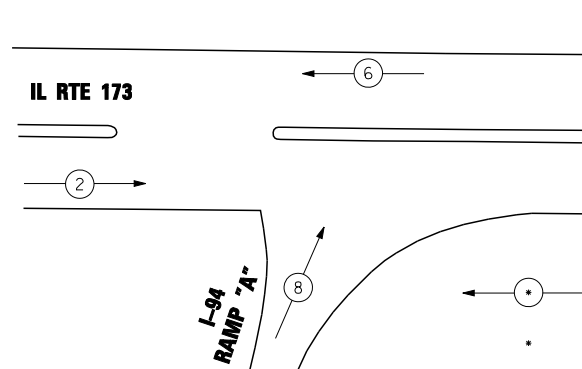


CONTROLLER SEQUENCE

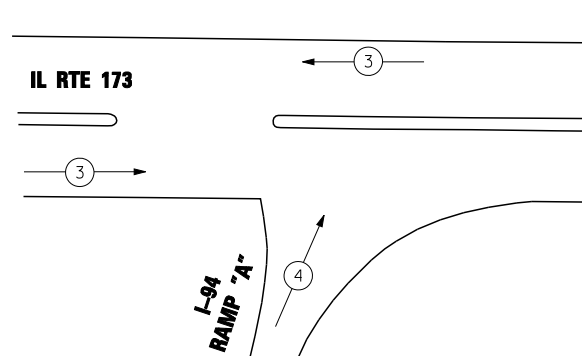


LEGEND

DUAL ENTRY PHASE
 NUMBER REFERS TO ASSOCIATED PHASE

PHASE DESIGNATION DIAGRAM

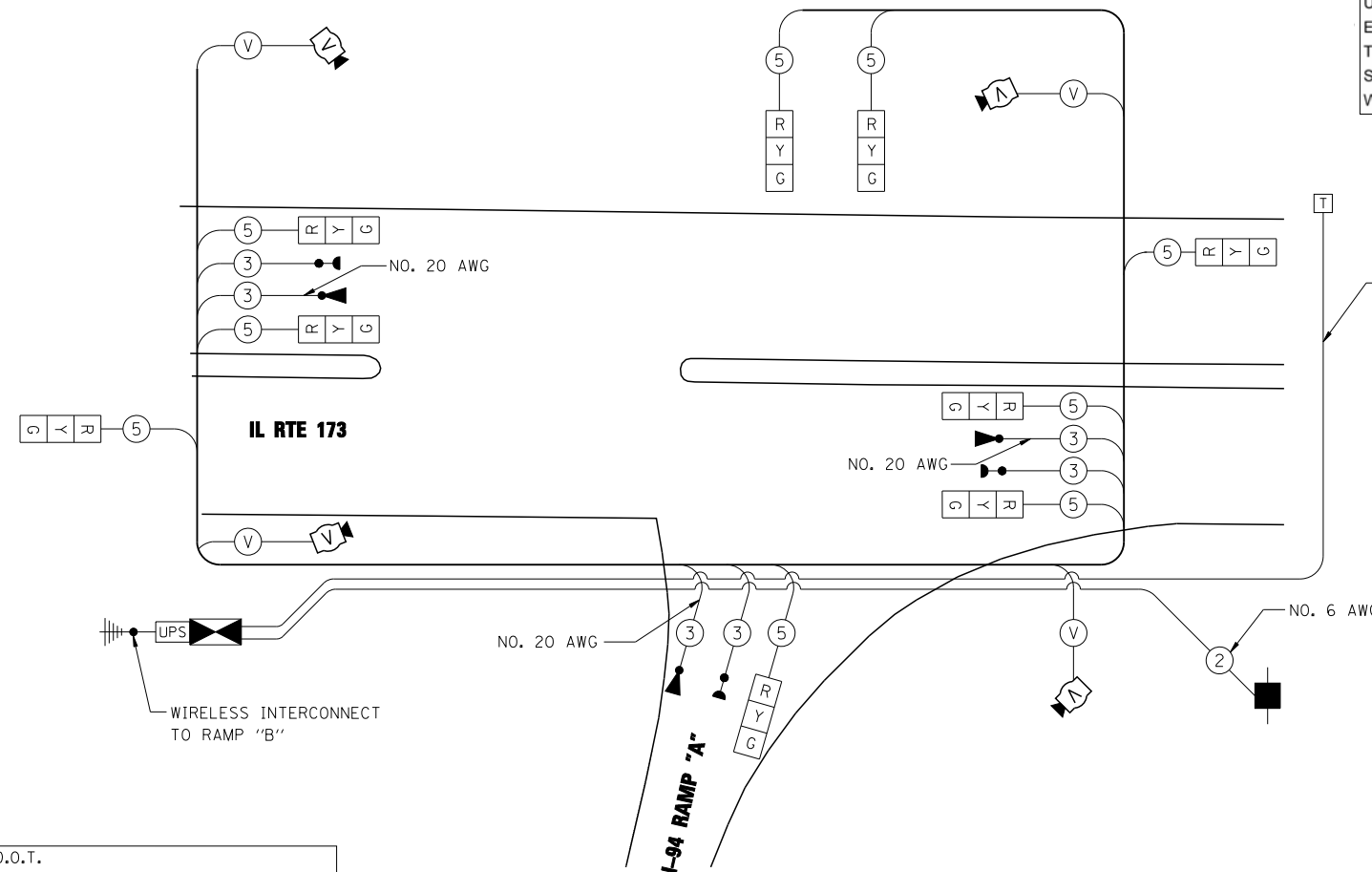
EMERGENCY VEHICLE PREEMPTION SEQUENCE



PROPOSED EMERGENCY VEHICLE PREEMPTORS		
EMERGENCY VEHICLE PREEMPTOR	3	4
MOVEMENT	←	↑

SCHEDULE OF QUANTITIES

ITEM	UNIT	QUANTITY
CHANGEABLE MESSAGE SIGN	CAL MO	1
SERVICE INSTALLATION - POLE MOUNTED	EACH	1
MASTER CONTROLLER (SPECIAL)	EACH	1
SPAN WIRE	FOOT	488
TETHER WIRE	FOOT	488
ELECTRIC CABLE AERIAL SUSPENDED, SIGNAL, NO. 14 3C	FOOT	395
ELECTRIC CABLE AERIAL SUSPENDED, SIGNAL, NO. 14 5C	FOOT	1990
ELECTRIC CABLE AERIAL SUSPENDED, SERVICE, NO. 6 2 C	FOOT	146
LIGHT DETECTOR	EACH	3
LIGHT DETECTOR AMPLIFIER	EACH	1
VIDEO DETECTION SYSTEM	EACH	1
FULL-ACTUATED CONTROLLER AND CABINET, TYPE V, SPECIAL	EACH	1
UNINTERRUPTIBLE POWER SUPPLY, SPECIAL	EACH	1
ELECTRIC CABLE AERIAL SUSPENDED NO. 20 3/C, TWISTED, SHIELDED	FOOT	395
TEMPORARY TRAFFIC SIGNAL TIMING	EACH	1
SIGNAL HEAD, LED, 1-FACE, 3-SECTION, SPAN WIRE MOUNTED	EACH	9
WOOD POLE, 45 FOOT, CLASS 5	EACH	4



CABLE PLAN

RESTORATION OF WORK AREA, RESTORATION OF THE TRAFFIC SIGNAL WORK AREA SHALL BE INCIDENTAL TO THE RELATED PAY ITEM SUCH AS FOUNDATION, CONDUIT, HANDHOLE, TRENCH AND BACKFILL, ETC., AND NO EXTRA COMPENSATION SHALL BE ALLOWED. ALL ROADWAY SURFACES SUCH AS SHOULDERS, MEDIANS, SIDEWALKS, PAVEMENT, ETC. SHALL BE REPLACED IN KIND. ALL DAMAGE TO MOWED LAWNS SHALL BE REPLACED WITH AN APPROVED SOD, AND ALL DAMAGE TO UNMOWED FIELDS SHALL BE SEEDED IN ACCORDANCE WITH STANDARD SPECIFICATIONS 252 AND 250 RESPECTIVELY.

NOTES:

1. THE TRAFFIC SIGNAL CONTROLLER EQUIPMENT FOR THIS INTERSECTION SHALL BE "EAGLE" TO MATCH THE EXISTING INTERSECTION IN THE PROPOSED SYSTEM.
2. THE EMERGENCY VEHICLE PREEMPTION EQUIPMENT FOR THIS INTERSECTION SHALL BE "OPTICOM" TO MATCH THE TOWNSHIP SYSTEM.

I.D.O.T. TRAFFIC SIGNAL INSTALLATION ELECTRICAL SERVICE REQUIREMENTS					
TYPE	NO. OF LAMPS	WATTAGE		% OPERATIONS	TOTAL WATTAGE
		INCAND.	LED		
SIGNAL (RED)	9	135	17	0.50	76.5
(YELLOW)	9	135	25	0.25	56.25
(GREEN)	9	135	15	0.25	33.75
ARROW	-	135	12	0.10	-
PED. SIGNAL	-	90	25	1.00	-
CONTROLLER	1	100	100	1.00	100
ILLUM. SIGN	-	-	25	0.50	-

ENERGY COSTS TO: TOTAL = 266.5

ILLINOIS DEPARTMENT OF TRANSPORTATION
 DIVISION OF HIGHWAYS/DISTRICT 1
 201 WEST CENTER COURT/SCHAUMBURG, IL 60196

ENERGY SUPPLY: CONTACT: DOROTHY PROSEN
 PHONE: (847) 816-5323
 COMPANY: COM ED



FILE NAME =	USER NAME = rswanson	DESIGNED - RAS	REVISED -
		DRAWN - RAS	REVISED -
	PLOT SCALE = none	CHECKED - DLT	REVISED -
	PLOT DATE = 12/15/2011	DATE - 3/9/12	REVISED -

STATE OF ILLINOIS
 DEPARTMENT OF TRANSPORTATION

SCHEDULE OF QUANTITIES, CABLE PLAN, AND PHASE DESIGNATION DIAGRAM
 IL RTE 173 AT I-94 RAMP "A"

SCALE: NONE SHEET NO. 1 OF 1 SHEETS STA. TO STA.

F.A.I. RTE.	SECTION	COUNTY	TOTAL SHEETS	SHEET NO.
94	49-1(HB & HB-1R)	LAKE	225	100
			CONTRACT NO. 60L76	
ILLINOIS FED. AID PROJECT				

TS-10