

**NOTES:**

1. SEE SHEET E-02 FOR LOCATIONS AND DESIGNATIONS OF TEMPORARY LIGHTING EQUIPMENT TO REMAIN IN PLACE AT CONCLUSION OF CONTRACT.
2. 3" PVC CONDUIT SHALL BE STUBBED OUT TO BELOW GRADE AT EACH EMBEDDED JUNCTION BOX. THE COST OF THIS WORK IS INCLUDED IN THE COST OF THE JUNCTION BOX. SEE DETAIL ON SHEET E-06.
3. SEE SHEET E-01 FOR LEGEND AND GENERAL NOTES.
4. EXPANSION/DEFLECTION COUPLING INSTALLED AT BRIDGE JOINTS SHALL BE INCIDENTAL TO THE COST OF THE PVC CONDUIT EMBEDDED IN STRUCTURE.

**EJM ENGINEERING, INC.**  
 411 South Wells Street Suite 1000  
 Chicago, Illinois 60607

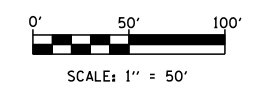
FILE NAME =	USER NAME = rswanson	DESIGNED - RAS	REVISED -
		DRAWN - RAS	REVISED -
		CHECKED - DLT	REVISED -
		DATE - 12/2/11	REVISED -

**STATE OF ILLINOIS  
 DEPARTMENT OF TRANSPORTATION**

**PROPOSED INTERIM LIGHTING PLAN  
 RUSSELL ROAD**

SCALE: 1" = 50' SHEET NO. 1 OF 2 SHEETS STA. 6+60 TO STA. 21+13

F.A.I. RTE.	SECTION	COUNTY	TOTAL SHEETS	SHEET NO.
94	49-1(HB & HB-1R)	LAKE	225	106
ILLINOIS FED. AID PROJECT			CONTRACT NO. 60L76	



E-04