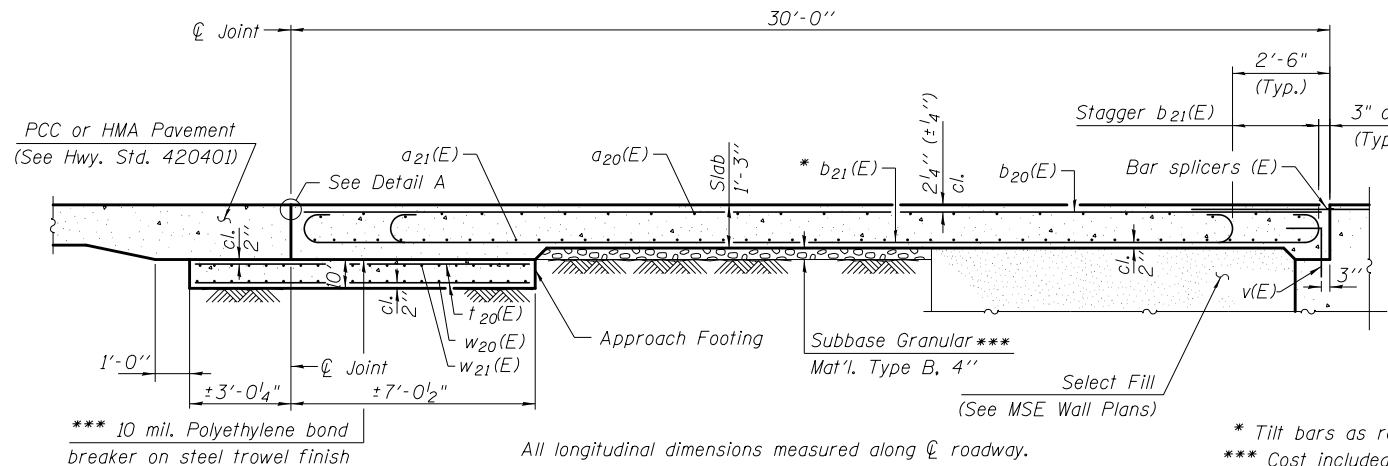
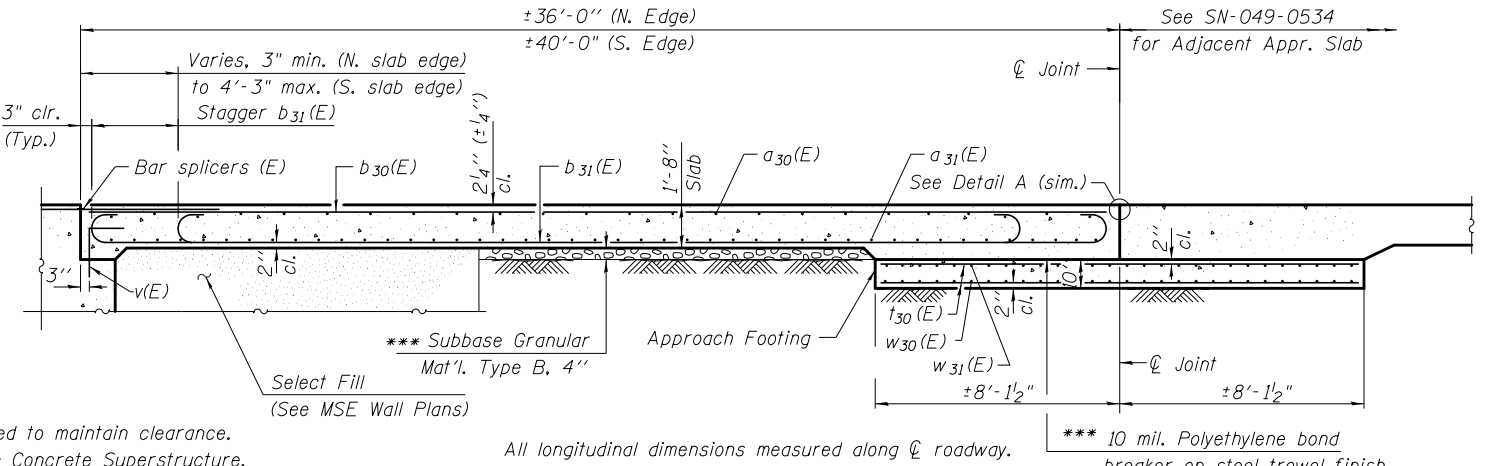


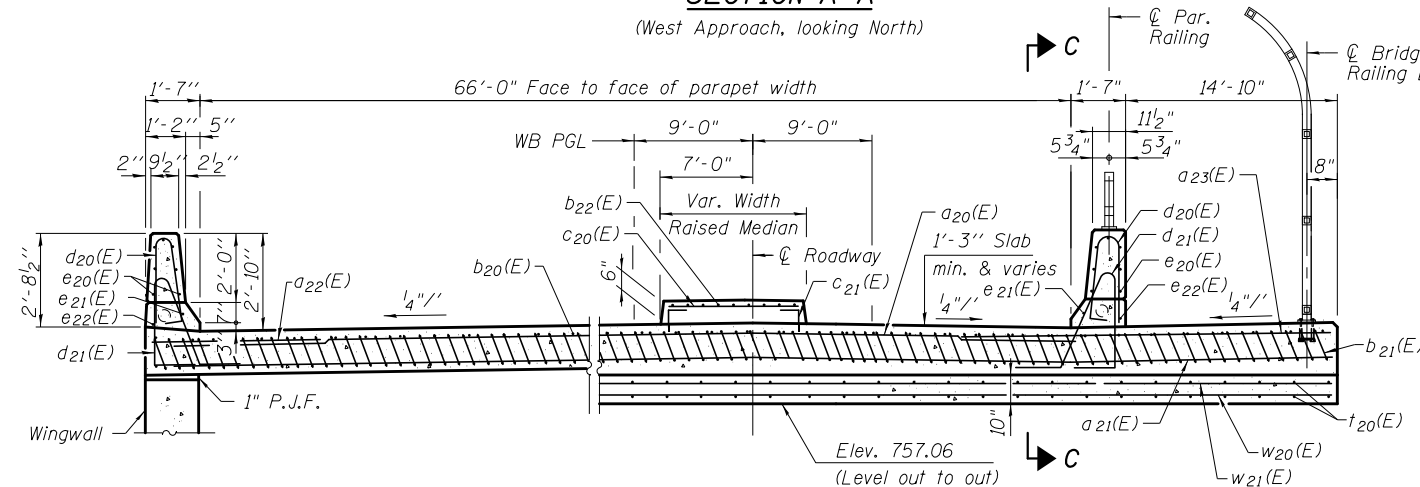
3/7/2012 4:28:07 PM  
 S:\101\05\_CADD\60L76\_RussellRdwy\60L76\_Sheets\0490533-60L76-015-ASDI.dgn



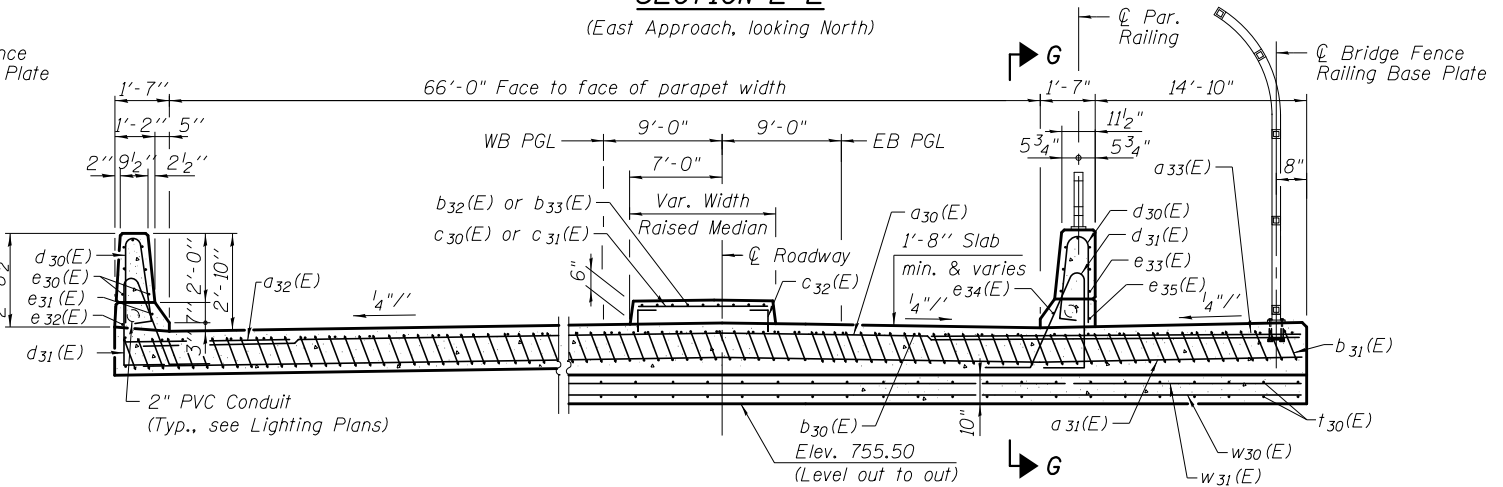
**SECTION A-A**  
(West Approach, looking North)



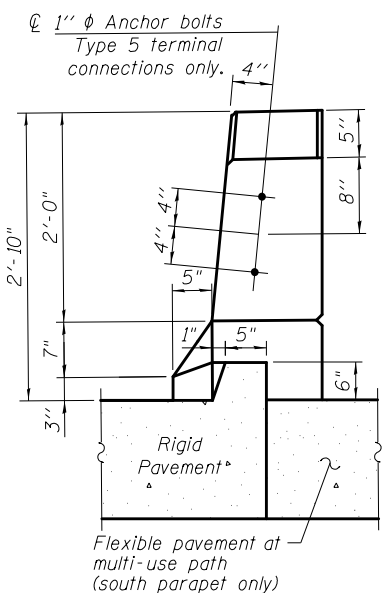
**SECTION E-E**  
(East Approach, looking North)



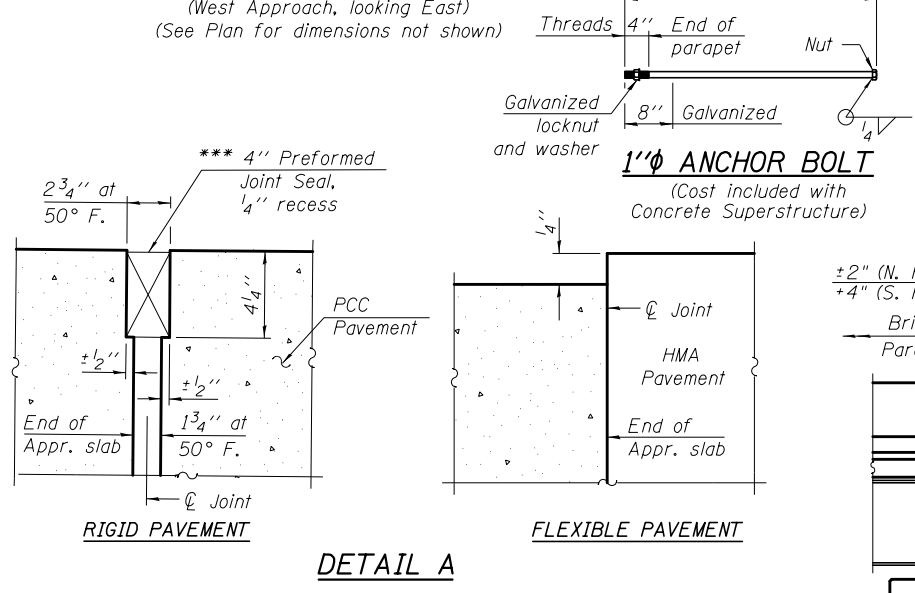
**SECTION B-B**  
(West Approach, looking East)



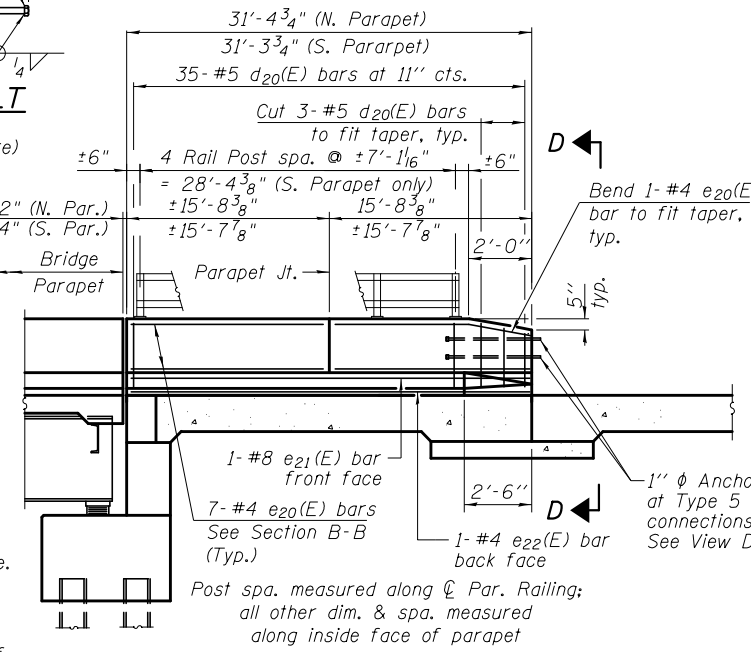
**SECTION F-F**  
(East Approach, looking East)



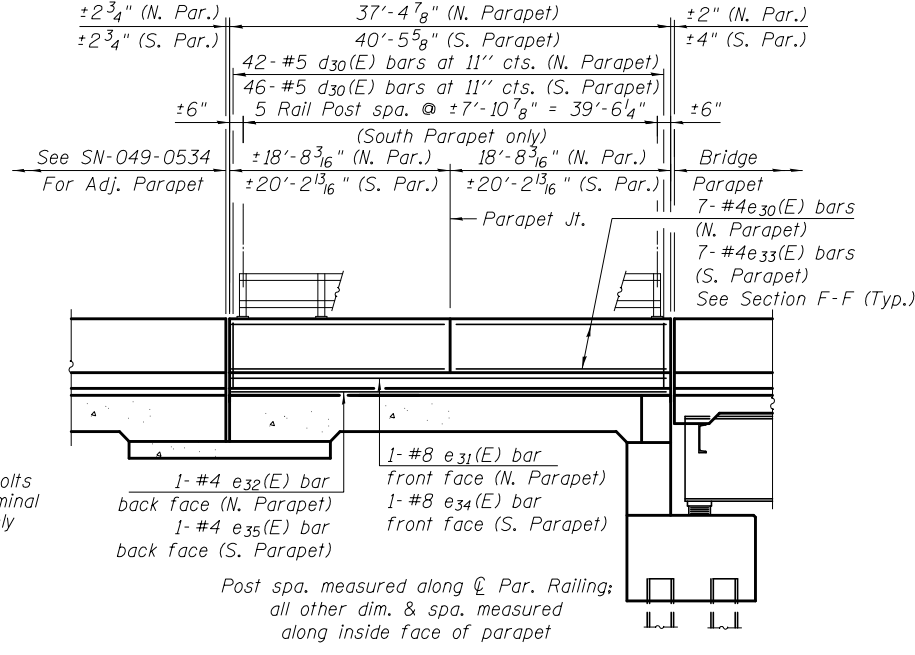
**VIEW D-D**



**DETAIL A**



**VIEW C-C**



**VIEW G-G**

**Notes:**  
 Approach slab and parapet concrete shall be paid for as Concrete Superstructure.  
 Approach footing concrete shall be paid for as Concrete Structures.  
 Reinforcement shall be paid for as Reinforcement Bars, Epoxy Coated.  
 For v(E) bar details, see Sheets S-25 & S-26 of S-33  
 The approach footing maximum applied service bearing pressure (Qmax) = 2.0 ksf.  
 For bar splicer details, see Sheets S-25, S-26, & S-29 of S-33  
 Cost of excavation for approach footing included with Concrete Structures.  
 See Sheet S-15 for Preformed Joint Seal Details at Approach Slabs.

**BOWMAN, BARRETT & ASSOCIATES INC.**  
 CONSULTING ENGINEERS  
 Chicago, Illinois  
 312.228.0100  
 www.bbandainc.com

FILE NAME =	USER NAME =	DESIGNED - MRM	REVISIONS -
		CHECKED - TL	REVISIONS -
		DRAWN - MTR	REVISIONS -
		CHECKED - SF	REVISIONS -
PLOT SCALE = N.T.S.			
PLOT DATE = 3/7/2012			

**STATE OF ILLINOIS**  
**DEPARTMENT OF TRANSPORTATION**

**BRIDGE APPROACH SLAB DETAILS I**  
**STRUCTURE NO. 049-0533**

SHEET NO. S-14 OF S-33 SHEETS

F.A.U. RTE.	SECTION	COUNTY	TOTAL SHEETS	SHEET NO.
1199	49-1(HB & HB-1R)	LAKE	225	128
CONTRACT NO. 60L76				
ILLINOIS FED. AID PROJECT				