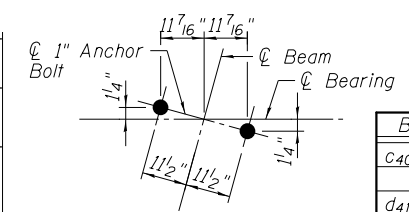
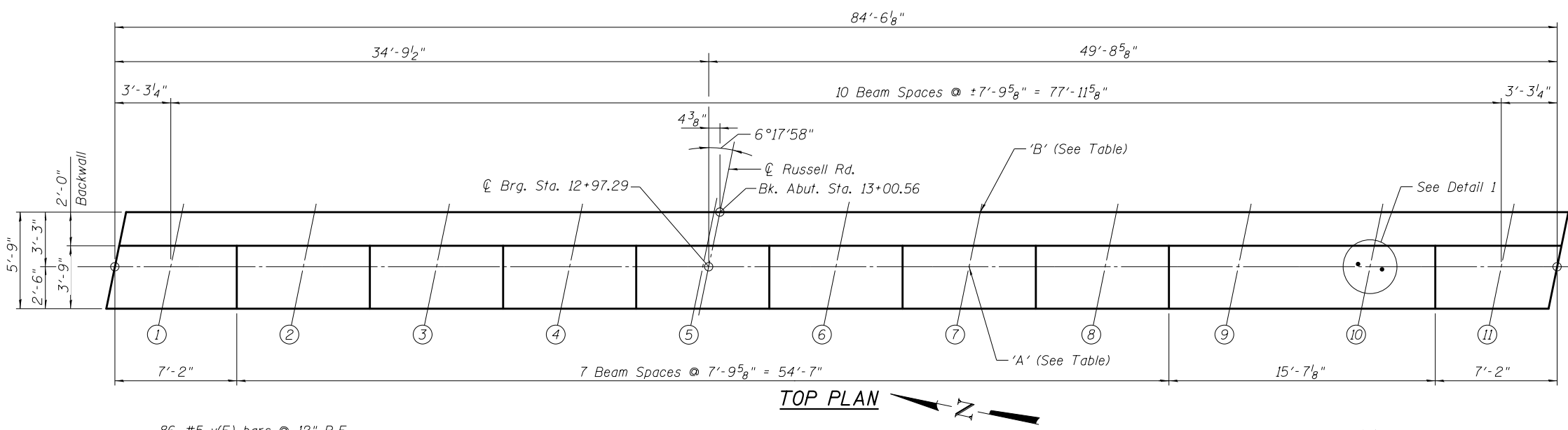


**EAST ABUTMENT
BILL OF MATERIAL**

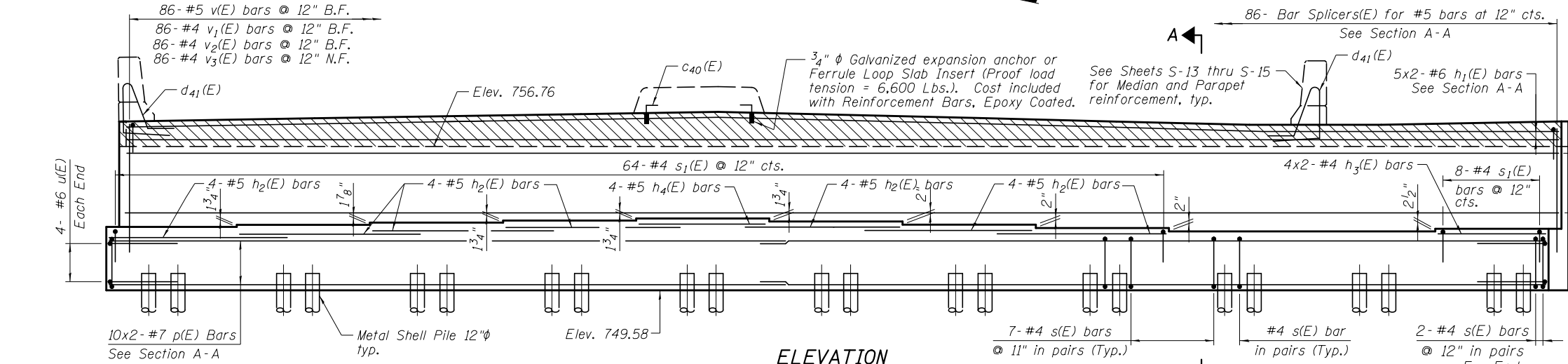
Bar	No.	Size	Length	Shape	
c40(E)	4	#5	1'-4"	┌	
d41(E)	4	#5	8'-9"	└	
h(E)	16	#5	43'-8"	—	
h1(E)	10	#6	43'-11"	—	
h2(E)	28	#5	11'-0"	—	
h3(E)	8	#5	5'-0"	—	
h4(E)	4	#5	7'-6"	—	
p(E)	20	#7	44'-7"	—	
s(E)	172	#4	14'-1"	□	
s1(E)	72	#4	8'-11"	┌	
u(E)	8	#6	13'-4"	└	
v(E)	86	#5	4'-4"	┌	
v1(E)	86	#4	4'-3"	└	
v2(E)	86	#4	4'-10"	—	
v3(E)	86	#4	6'-6"	—	
Concrete Structures				Cu. Yd.	89.4
Reinforcement Bars, Epoxy Coated				Pound	7,150
Furnishing Metal Shell Piles 12"x 0.250"				Foot	1,155
Driving Piles				Foot	1,155
Test Pile Metal Shells				Each	1
Pile Shoes				Each	21
Concrete Sealer				Sq. Ft.	733



DETAIL 1



TOP PLAN



ELEVATION

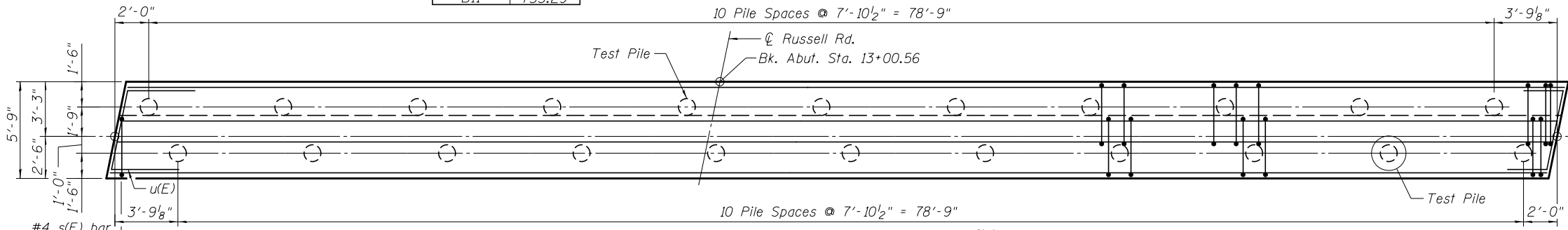
Beam No.	'A'
B1	753.13
B2	753.28
B3	753.44
B4	753.59
B5	753.74
B6	753.59
B7	753.42
B8	753.25
B9	753.08
*B10	753.08
B11	753.29

'A' - Bearing Seat Elevations given at intersection of Bearing and Beam

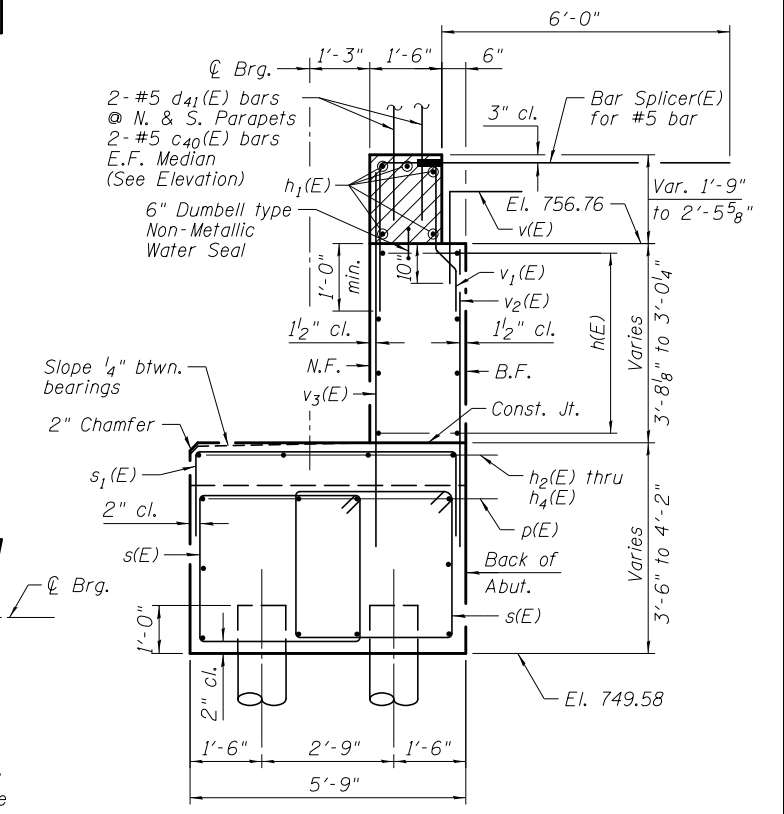
* Provide Shim at Beam 10

PILE DATA

Type: Metal Shell Pile-12" φ w/ 0.250" walls
 Nominal Required Bearing: 290 Kips
 Factored Resistance Available: 160 Kips
 Est. Length: 55'
 No. Production Piles: 21
 No. Test Piles: 1



FOOTING PLAN



SECTION A-A

Notes:
 Hatched area to be poured after superstructure false work has been removed. Quantity of concrete included with Concrete Superstructure, Sht. S-12 of S-33.
 Space reinforcement in cap to miss anchor bolts.
 Pour steps monolithically with cap.

N.F. - denotes Near Face
 B.F. - denotes Back Face

For Bar Bending Details, see Sheet S-25.

Bars indicated thus 2x4-#6 etc. indicates 2 lines of bars with 4 lengths per line.

BOWMAN, BARRETT & ASSOCIATES INC.
 CONSULTING ENGINEERS
 Chicago, Illinois
 312.228.0100
 www.bbandainc.com

FILE NAME =	USER NAME =	DESIGNED - SF	REVISIONS
		CHECKED - TL	REVISIONS -
		DRAWN - MTR	REVISIONS -
		CHECKED - MRM	REVISIONS -

**STATE OF ILLINOIS
DEPARTMENT OF TRANSPORTATION**

**EAST ABUTMENT
STRUCTURE NO. 049-0533**

SHEET NO. S-26 OF S-33 SHEETS

F.A.U. R.T.E.	SECTION	COUNTY	TOTAL SHEETS	SHEET NO.
1199	49-1(HB & HB-1R)	LAKE	225	140

CONTRACT NO. 60L76
 ILLINOIS FED. AID PROJECT

S:\101\05_CADD\60L76_RussellRdwy\60L76_Sheets\0490533-60L76-027-EAB.dgn 3/23/2012 4:35:18 PM