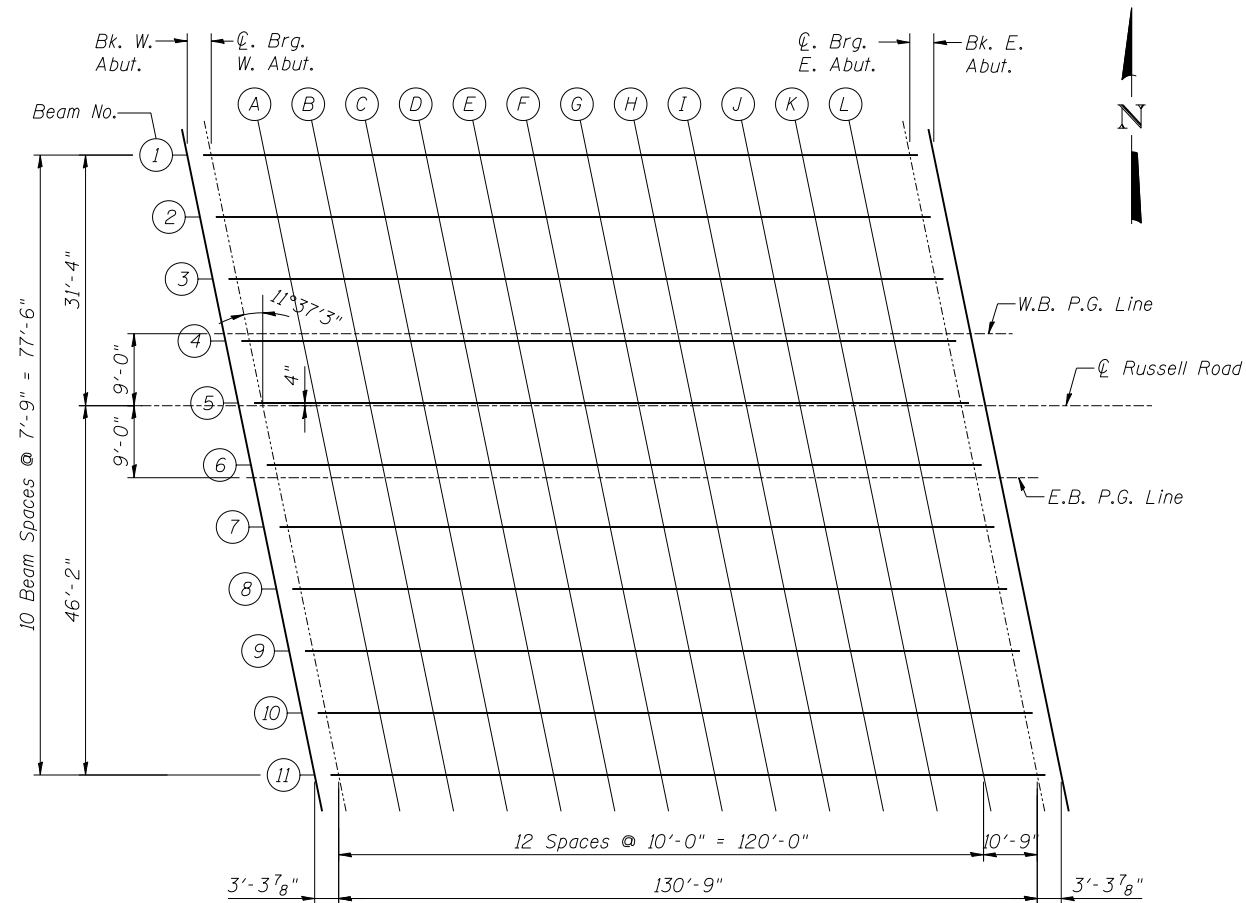


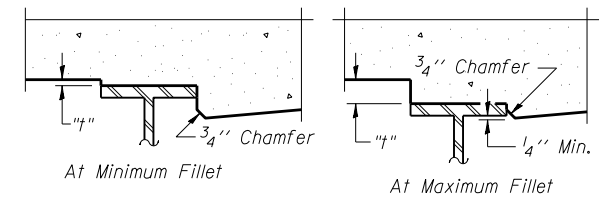
DEAD LOAD DEFLECTION DIAGRAM

(Includes weight of concrete only.)

Note:
The above deflections are not to be used in the field if the engineer is working from the grade elevations adjusted for dead load deflections as shown below & sheet 05 & 06.



PLAN



To determine "t": After all structural steel has been erected, elevations of the top flanges of the beams shall be taken at intervals shown below. These elevations subtracted from the "Theoretical Grade Elevations Adjusted for Dead Load Deflection" shown below, minus slab thickness, equals the fillet heights "t" above top flange of beams.

FILLET HEIGHTS

BEAM 1

Location	Station	Offset	Theoretical Grade Elevations	Theoretical Grade Elevations Adjusted For Dead Load Deflection
BK. W. ABUT.	13+68.28	- 31.33	757.84	757.84
Q. BRG. W. ABUT.	13+71.60	- 31.33	757.80	757.80
A	13+81.60	- 31.33	757.66	757.74
B	13+91.60	- 31.33	757.52	757.67
C	14+01.60	- 31.33	757.37	757.59
D	14+11.60	- 31.33	757.22	757.49
E	14+21.60	- 31.33	757.05	757.37
F	14+31.60	- 31.33	756.89	757.22
G	14+41.60	- 31.33	756.72	757.05
H	14+51.60	- 31.33	756.54	756.85
I	14+61.60	- 31.33	756.35	756.63
J	14+71.60	- 31.33	756.16	756.38
K	14+81.60	- 31.33	755.96	756.12
L	14+91.60	- 31.33	755.76	755.84
Q. BRG. E. ABUT.	15+02.35	- 31.33	755.53	755.53
BK. E. ABUT.	15+05.67	- 31.33	755.46	755.46

BEAM 2

Location	Station	Offset	Theoretical Grade Elevations	Theoretical Grade Elevations Adjusted For Dead Load Deflection
BK. W. ABUT.	13+69.87	- 23.58	757.98	757.98
Q. BRG. W. ABUT.	13+73.19	- 23.58	757.94	757.94
A	13+83.19	- 23.58	757.80	757.88
B	13+93.19	- 23.58	757.66	757.81
C	14+03.19	- 23.58	757.51	757.73
D	14+13.19	- 23.58	757.35	757.62
E	14+23.19	- 23.58	757.19	757.50
F	14+33.19	- 23.58	757.02	757.35
G	14+43.19	- 23.58	756.85	757.18
H	14+53.19	- 23.58	756.67	756.98
I	14+63.19	- 23.58	756.48	756.76
J	14+73.19	- 23.58	756.29	756.51
K	14+83.19	- 23.58	756.09	756.25
L	14+93.19	- 23.58	755.89	755.97
Q. BRG. E. ABUT.	15+03.94	- 23.58	755.66	755.66
BK. E. ABUT.	15+07.26	- 23.58	755.59	755.59

BEAM 3

Location	Station	Offset	Theoretical Grade Elevations	Theoretical Grade Elevations Adjusted For Dead Load Deflection
BK. W. ABUT.	13+71.52	- 15.58	758.13	758.13
Q. BRG. W. ABUT.	13+74.84	- 15.58	758.08	758.08
A	13+84.84	- 15.58	757.94	758.02
B	13+94.84	- 15.58	757.80	757.95
C	14+04.84	- 15.58	757.65	757.87
D	14+14.84	- 15.58	757.49	757.76
E	14+24.84	- 15.58	757.33	757.64
F	14+34.84	- 15.58	757.16	757.49
G	14+44.84	- 15.58	756.99	757.32
H	14+54.84	- 15.58	756.80	757.12
I	14+64.84	- 15.58	756.62	756.89
J	14+74.84	- 15.58	756.42	756.65
K	14+84.84	- 15.58	756.22	756.38
L	14+94.84	- 15.58	756.02	756.10
Q. BRG. E. ABUT.	15+05.59	- 15.58	755.79	755.79
BK. E. ABUT.	15+08.91	- 15.58	755.72	755.72



FILE NAME =	USER NAME =	DESIGNED - LRT / AG	REVISIONS -
		CHECKED - OAO / LRT	REVISIONS -
		DRAWN - TCS / AG	REVISIONS -
		CHECKED - AG	REVISIONS -

**STATE OF ILLINOIS
DEPARTMENT OF TRANSPORTATION**

**TOP OF SLAB ELEVATIONS SHEET 1 OF 3
STRUCTURE NO. 049-0534**

F.A.U. RTE.	SECTION	COUNTY	TOTAL SHEETS	SHEET NO.
1199	49-1(HB & HB-1)R	LAKE	225	151
CONTRACT NO. 60L76				
ILLINOIS FED. AID PROJECT				

SHEET NO. 4 OF 31 SHEETS