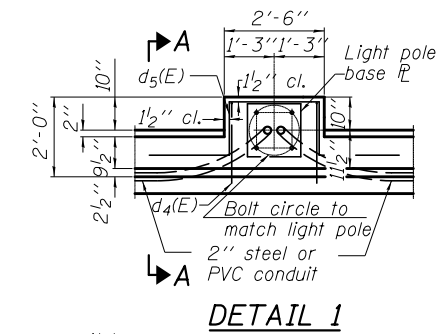
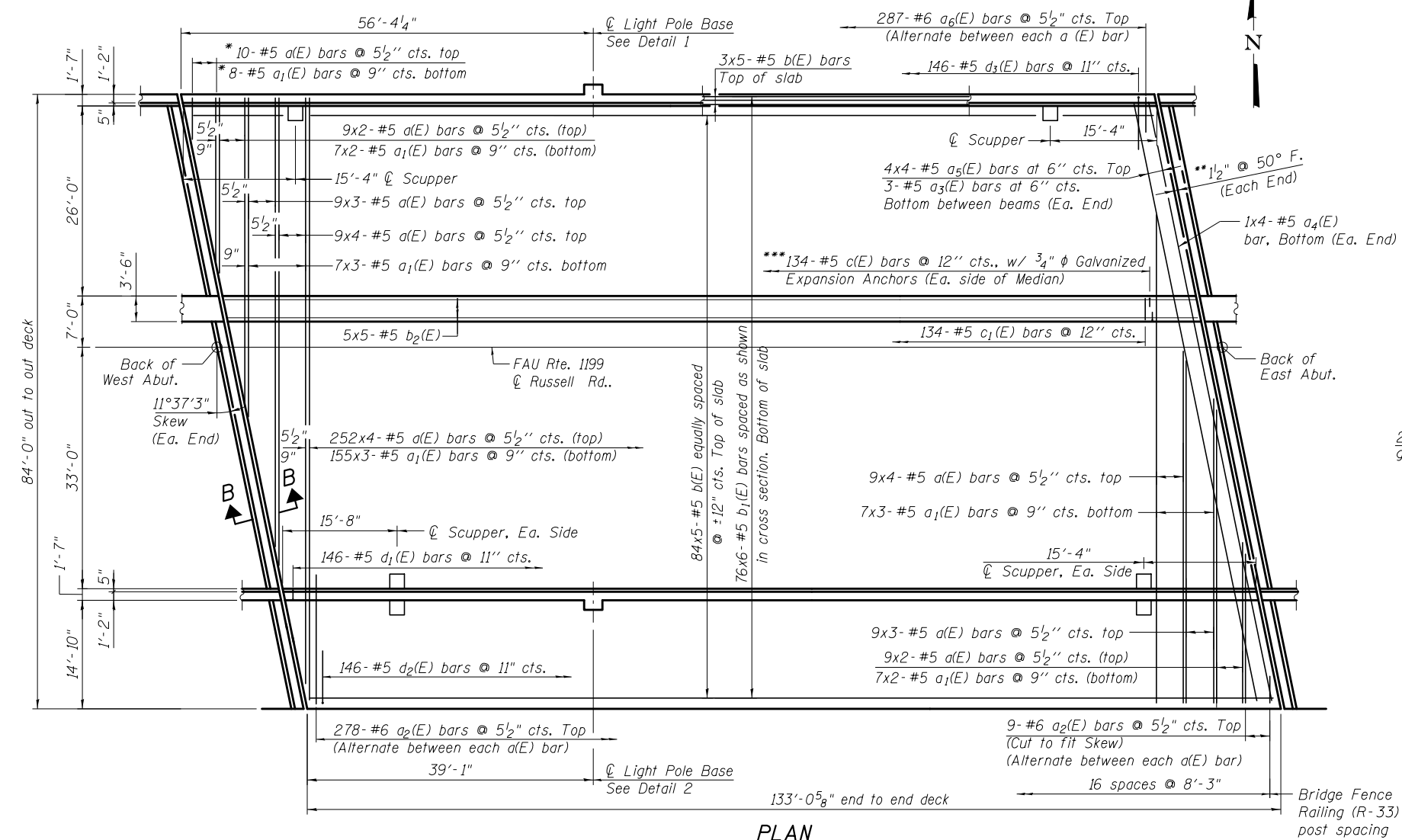
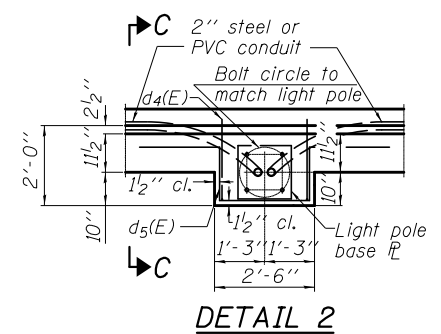


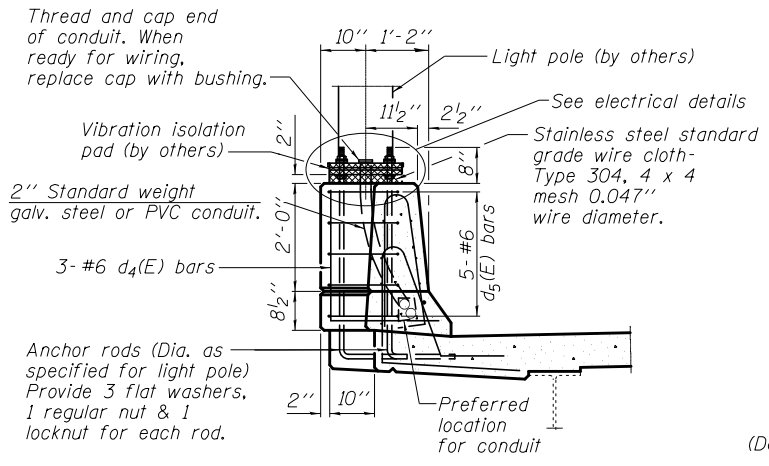
*Order a(E) & a₂(E) bars full length.
Cut to fit skew and use remainder of bars in opposite end.



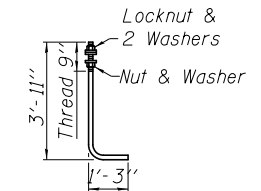
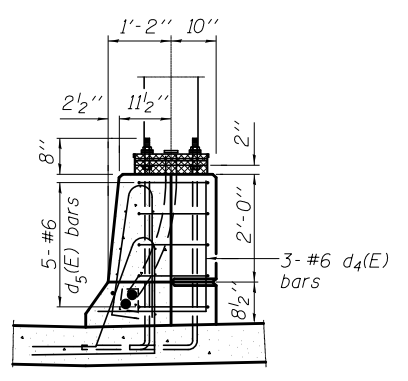
Note:
Cost of anchor rods and conduit is included with Concrete Superstructure.



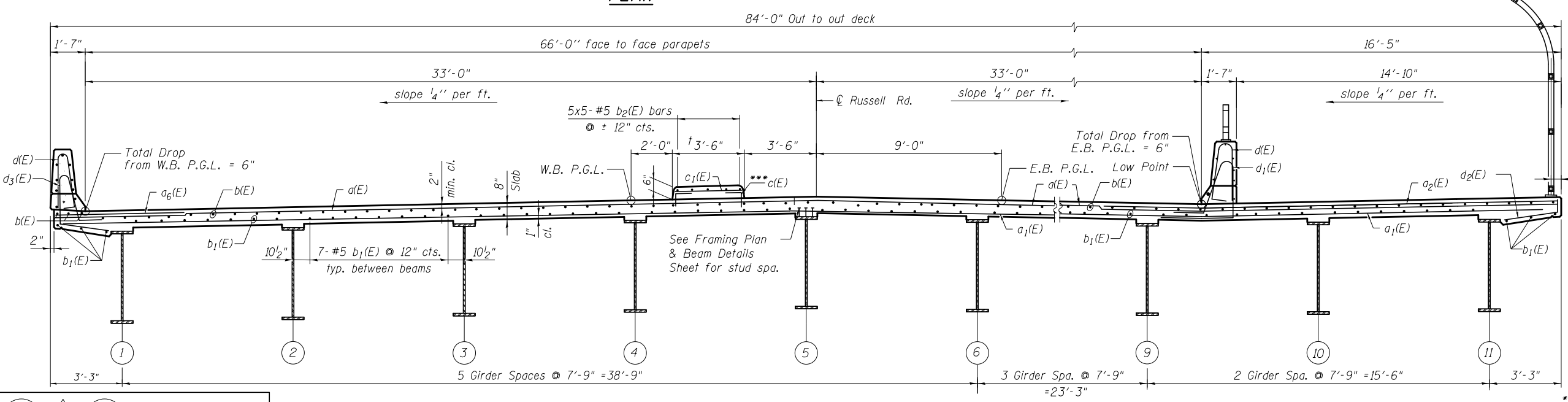
Note:
Cost of anchor rods and conduit is included with Concrete Superstructure.



Anchor rods (Dia. as specified for light pole) Provide 3 flat washers, 1 regular nut & 1 locknut for each rod.



Diameter as specified for light poles.
(ASTM F 1554 Grade 105)



Notes:
See Sheet 10 of 31 for superstructure details and Bill of Material.
Bars indicated thus 20 x 3-#5 etc. indicates 20 lines of bars with 3 lengths per line.
See Sheet 10 of 31 for parapet reinforcement. Min Bar lap #5 = 3'-3"

***c(E) bars with 3/4" φ Galvanized Expansion Anchors Each side of Median. The cost of expansion anchors is included in the cost of Reinforcement Bars, Epoxy Coated.

S D I
S RUC URE DESIGNS, INC.
ENGINEERS & SURVEYORS
PH. (312) 551-9780
www.sdiconsigns.com

† See Sheet S-2 of S-31 for stamped concrete median detail.

STATE OF ILLINOIS
DEPARTMENT OF TRANSPORTATION

**Dimensions are based on a Rolled Rail Strip Seal Joint. If the Contractor elects to use the Welded Rail Strip Seal Joint, deck dimensions may require adjustments to satisfy the details on Base Sheet EJ-SSJ.

SUPERSTRUCTURE
STRUCTURE NO. 049-0534

FILE NAME =	USER NAME =	DESIGNED - LRT / AG	REVISIONS -
		CHECKED - OAO / LRT	REVISIONS -
		DRAWN - TCS / AG	REVISIONS -
		CHECKED - AG	REVISIONS -
PLOT SCALE = N.T.S.			
PLOT DATE = 3/7/2012			

F.A.U. R.T.E.	SECTION	COUNTY	TOTAL SHEETS	SHEET NO.
1199	49-1(HB & HB-1R)	LAKE	225	156
CONTRACT NO. 60L76				
ILLINOIS FED. AID PROJECT				