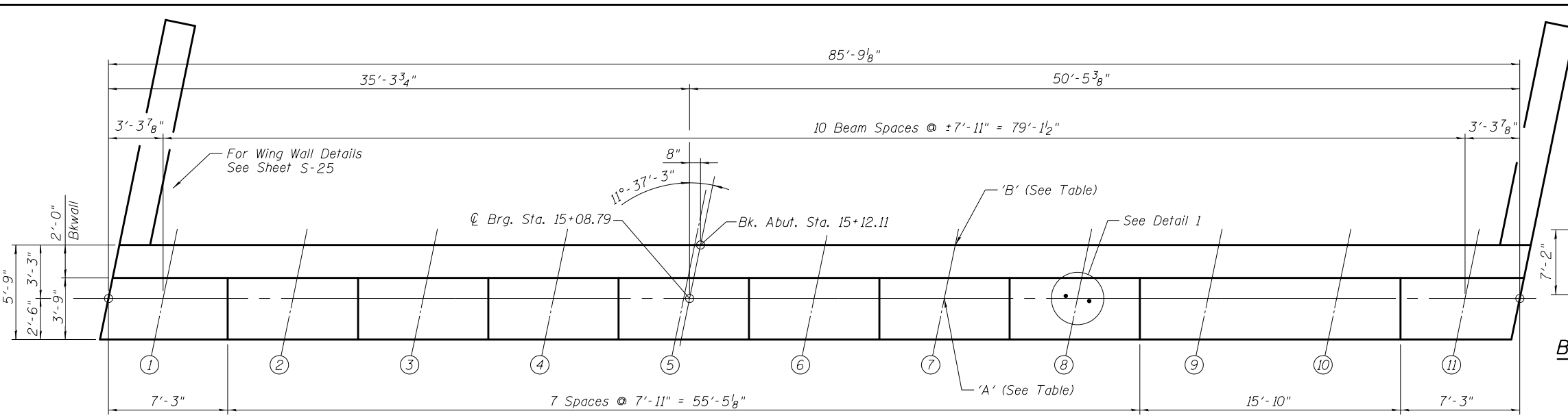
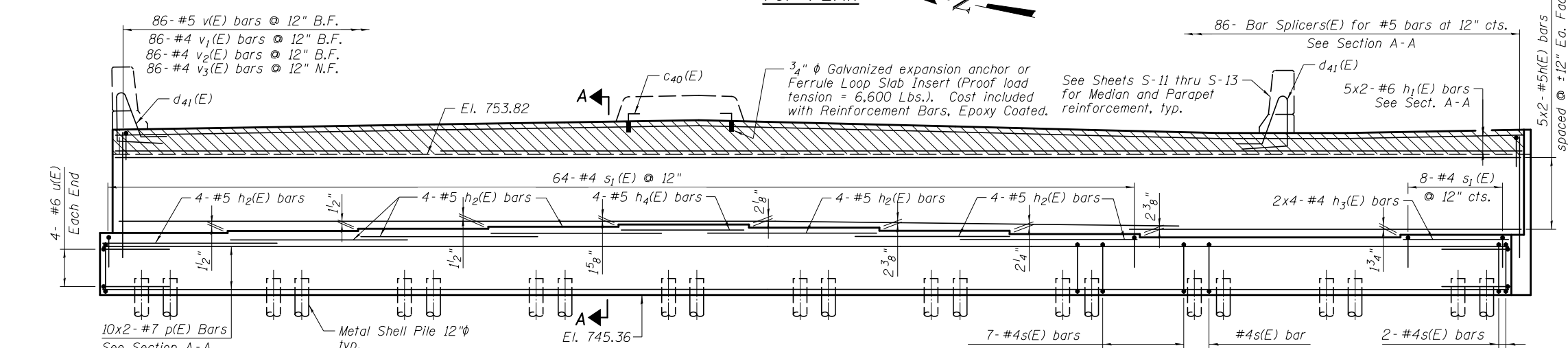


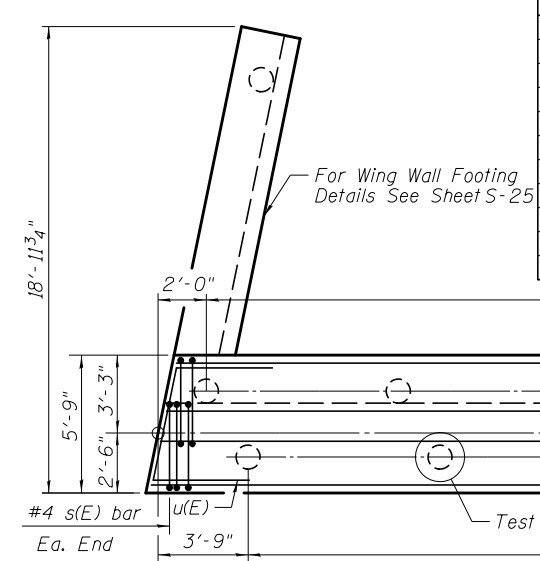
S:\101\05_CADD\60L76_RussellRdwy\60L76_Sheets\0490534-60L76-025-EAB.dgn
 1/27/2012 3:33:31PM



TOP PLAN



ELEVATION



FOOTING PLAN

Beam No.	'A'
B1	749.12
B2	749.25
B3	749.38
B4	749.50
B5	749.63
B6	749.45
B7	749.25
B8	749.06
B9	748.86
*B10	748.86
B11	749.01

'A' - Bearing Seat Elevations given at intersection of Bearing and Beam

* Provide Shim \bar{r} at Beam 10

PILE DATA

Type: Metal Shell Pile-12" ϕ w/ 0.250" walls
 Nominal Required Bearing: 290 Kips
 Factored Resistance Available: 160 Kips
 Est. Length: 56'
 No. Production Piles: 23
 No. Test Piles: 1

BOWMAN, BARRETT & ASSOCIATES INC.
 CONSULTING ENGINEERS
 Chicago, Illinois
 312.228.0100
 www.bbandainc.com

FILE NAME =	USER NAME =	DESIGNED - SF	REVISIONS
		CHECKED - TL	REVISIONS
		DRAWN - MTR	REVISIONS
		CHECKED - MRM	REVISIONS

STATE OF ILLINOIS
DEPARTMENT OF TRANSPORTATION

EAST ABUTMENT
STRUCTURE NO. 049-0534

SHEET NO. S-24 OF S-31 SHEETS

EAST ABUTMENT
BILL OF MATERIAL

Bar	No.	Size	Length	Shape
c ₄₀ (E)	4	#5	1'-4"	┌
d ₄₁ (E)	4	#5	7'-11"	└
h(E)	20	#5	44'-3"	—
h ₁ (E)	10	#6	44'-6"	—
h ₂ (E)	28	#5	11'-0"	—
h ₃ (E)	8	#5	5'-6"	—
h ₄ (E)	4	#5	7'-6"	—
h ₅ (E)	28	#4	15'-0"	—
n(E)	28	#6	15'-7"	┌
p(E)	20	#7	45'-0"	—
p ₁ (E)	12	#7	17'-0"	—
s(E)	172	#4	14'-1"	┌
s ₁ (E)	72	#4	8'-11"	┌
s ₂ (E)	28	#4	9'-3"	┌
u(E)	8	#6	13'-5"	┌
v(E)	86	#5	4'-4"	┌
v ₁ (E)	86	#4	4'-3"	┌
v ₂ (E)	86	#4	5'-4"	┌
v ₃ (E)	86	#4	7'-0"	┌

Concrete Structures	Cu. Yd.	
	114.8	
Reinforcement Bars, Epoxy Coated	Pound	8,950
Furnishing Metal Shell Piles 12"x 0.250"	Foot	1,288
Driving Piles	Foot	1,288
Test Pile Metal Shells	Each	1
Pile Shoes	Each	23
Concrete Sealer	Sq. Ft.	848

SECTION A-A

Notes:

Hatched area to be poured after superstructure false work has been removed. Quantity of concrete included with Concrete Superstructure.
 Space reinforcement in cap to miss anchor bolts.
 Pour steps monolithically with cap.

N.F. - denotes Near Face
 B.F. - denotes Back Face
 Bars indicated thus 2x4-#6 etc. indicates 2 lines of bars with 4 lengths per line.