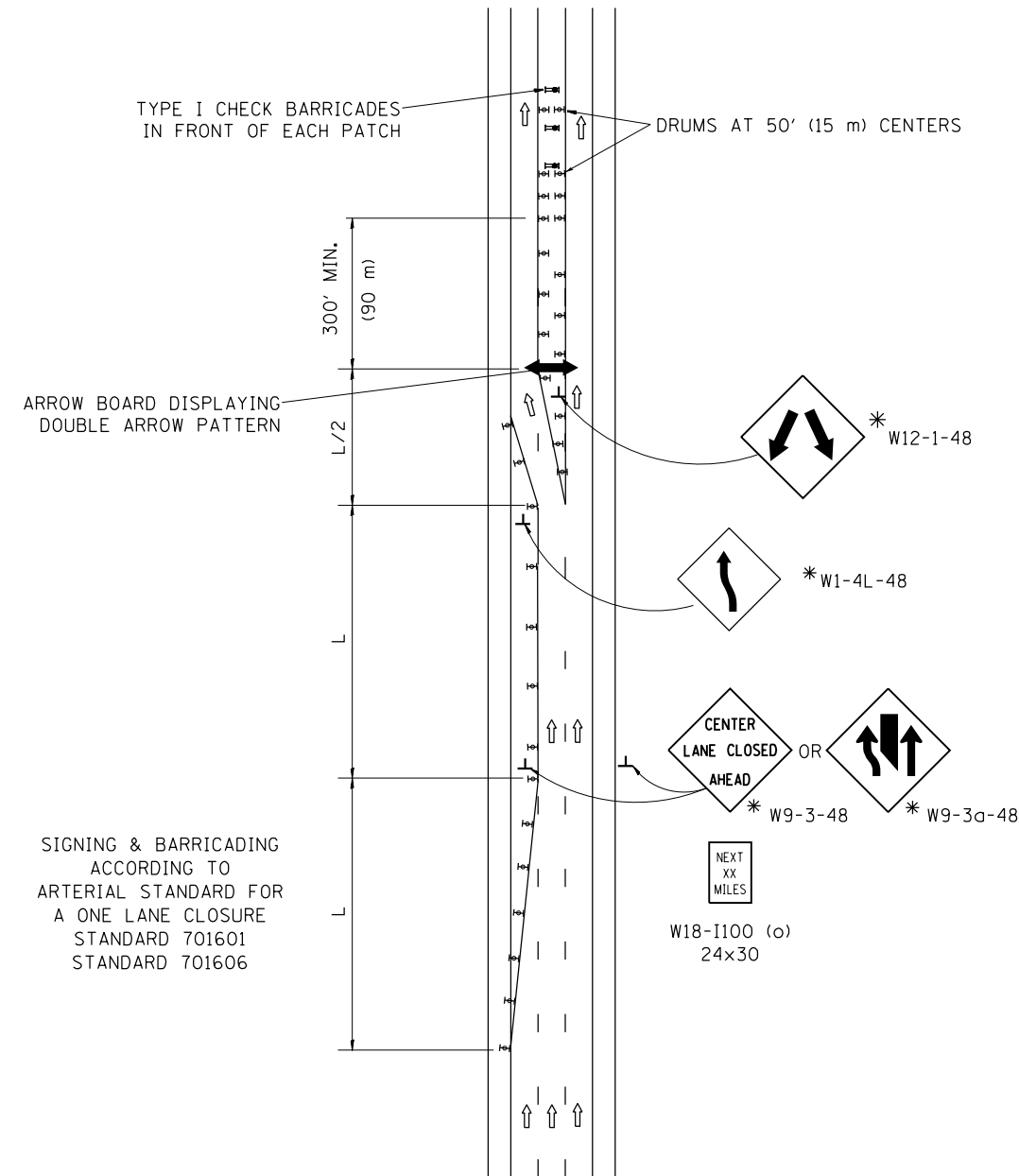


CENTER LANE CLOSURE



- SYMBOLS
- ↑ DIRECTION OF TRAFFIC
 - ➔ ARROWBOARD
 - ▣ ACTIVE WORK AREA
 - ⊥ SIGN ON PORTABLE OR PERMANENT SUPPORT *
 - ⊥ TYPE II BARRICADE, OR DRUM WITH MONO-DIRECTIONAL STEADY BURN LIGHT
- * ALL SIGNS SHALL BE MOUNTED AT A MINIMUM HEIGHT OF 5' (1.5 m).

Calculate L as follows:

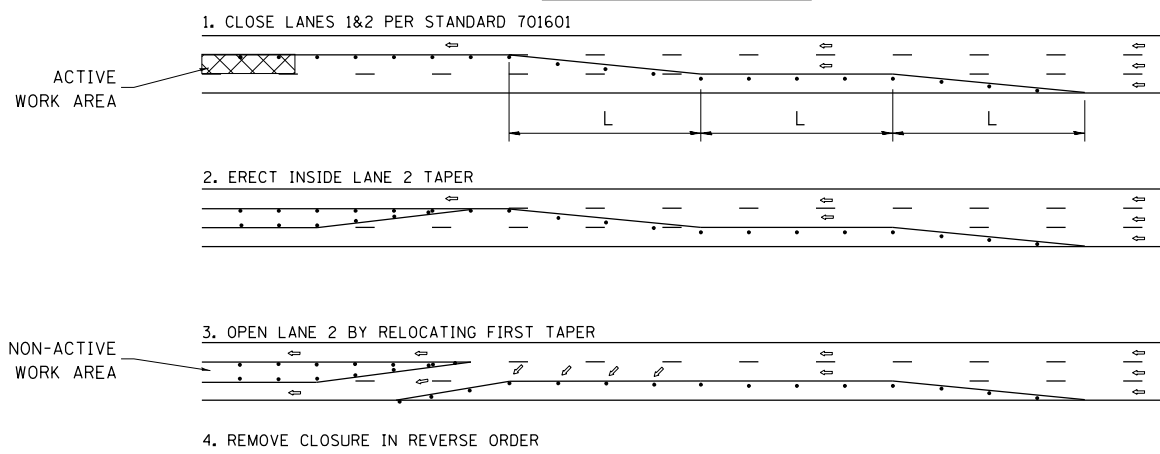
SPEED LIMIT

	FORMULAS
	English (Metric)
40 mph (70 km/h) or less:	$L = \frac{WS^2}{60}$ $L = \frac{WS^2}{150}$
45 mph (80 km/h) or greater:	$L = (W)(S)$ $L = 0.65(W)(S)$

W = Width of offset in feet (meters).

S = Normal posted speed mph (km/h).

INSTALLATION SEQUENCE



- NOTES
1. DRUMS WITH STEADY BURN LIGHTS SHALL BE USED AT 50' (15 m) CENTERS ON ALL TAPERS AND TANGENTS IN ADVANCE OF WORK AREA.
 2. CENTER LANE CLOSURE CONFIGURATION IS NOT TO BE USED WITH WORKERS PRESENT.

ALL DIMENSIONS ARE IN INCHES (MILLIMETERS) UNLESS OTHERWISE SHOWN

FILE NAME =	USER NAME = wilgreendp	DESIGNED -	REVISED -	STATE OF ILLINOIS DEPARTMENT OF TRANSPORTATION	TRAFFIC CONTROL DETAILS FOR ARTERIAL CENTER LANE CLOSURE			F.A. RTE.	SECTION	COUNTY	TOTAL SHEETS	SHEET NO.	
		DRAWN -	REVISED -			SCALE: NONE	SHEET NO. 1 OF 1 SHEETS	STA.	TO STA.	VAR.	2011-004-PP	COOK	34 33
		PLOT SCALE = 100.0000' / in.	CHECKED -		REVISED -							CONTRACT NO. 60N92	
		PLOT DATE = 2/14/2012	DATE -		REVISED -					FED. ROAD DIST. NO. 1 ILLINOIS FED. AID PROJECT			