

STATE OF ILLINOIS
DEPARTMENT OF TRANSPORTATION
DIVISION OF HIGHWAYS

F.A.I. RTE.	SECTION	COUNTY	TOTAL SHEETS	SHEET NO.
94	2011-066-1	COOK	*18	1
		ILLINOIS	CONTRACT NO. 60P85	

FOR INDEX OF SHEETS, SEE SHEET NO. 2

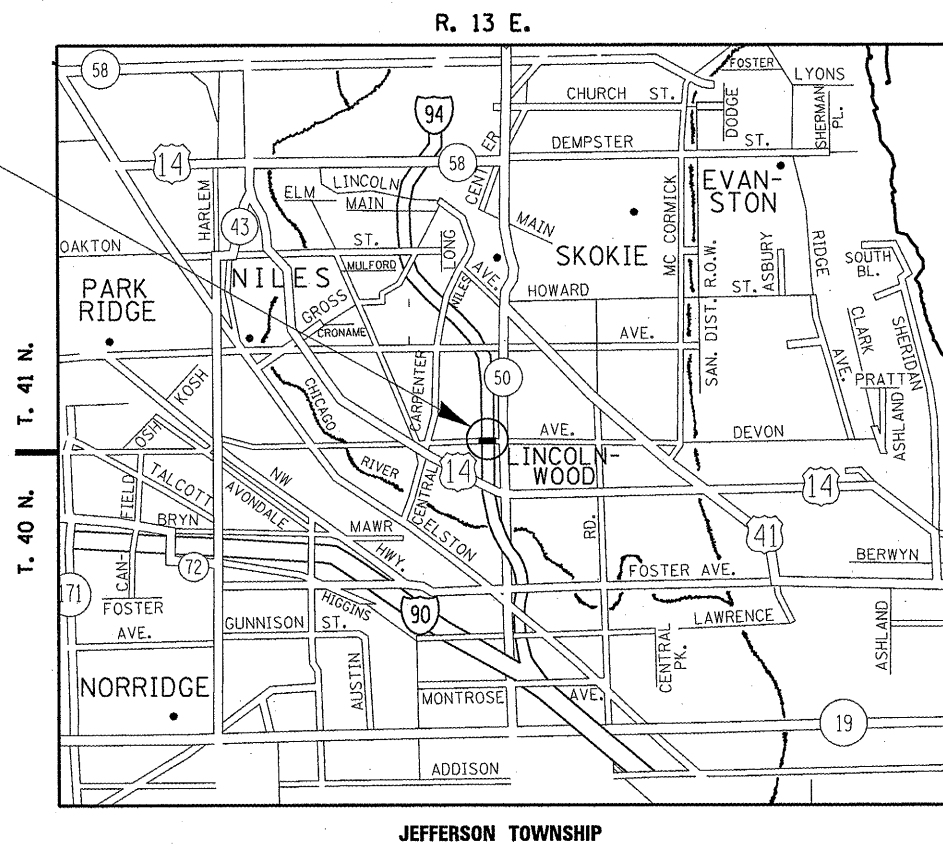
**PROPOSED
HIGHWAY PLANS**

F.A.I. ROUTE 94: I-94 (EDENS EXPWY)
AT DEVON AVE (SN 016-0834)
SECTION: 2011-066-1
SIDEWALK REPLACEMENT
COOK COUNTY
C-91-622-11

IMPROVEMENT IS LOCATED IN
THE VILLAGE OF LINCOLNWOOD



LOCATION OF
IMPROVEMENT
SN 016-0834



TRAFFIC DATA
I-94(EDENS EXPWY) 2010 AADT 156900
SPEED LIMIT = 55 MPH
DEVON AVE. 2006 AADT = 24900
SPEED LIMIT = 30 MPH

STATE OF ILLINOIS
DEPARTMENT OF TRANSPORTATION
DIVISION OF HIGHWAYS

SUBMITTED FEBRUARY 15, 2012
Diana M. O'Hea DEPUTY DIRECTOR OF HIGHWAYS, REGION ENGINEER
March 23, 2012
John D. Baranzelli PE, P.E. ENGINEER OF DESIGN AND ENVIRONMENT
March 23, 2012
William R. Fuxler acting DIRECTOR OF HIGHWAYS, CHIEF ENGINEER

J.U.L.I.E.
JOINT UTILITY LOCATION INFORMATION FOR EXCAVATION
1-800-892-0123
OR 811

PROJECT ENGINEER BORO, ROBERT (847) 705-4237
PROJECT MANAGER RAYYAN, ISSAM (847) 705-4178

GROSS & NET LENGTH = 232'-5"

CONTRACT NO. 60P85

**PRINTED BY THE AUTHORITY
OF THE STATE OF ILLINOIS**

INDEX OF SHEETS

STATE STANDARDS

GENERAL NOTES

SHEET NO.	DESCRIPTION	STANDARD NO.	DESCRIPTION
1	COVER SHEET	643001	SAND MADULE IMPACT ATTENUATORS
2	INDEX OF SHEETS, STATE STANDARDS & GENERAL NOTES	701301-04	LANE CLOSURE SHORT TIME OPERATIONS
3	SUMMARY OF QUANTITIES	701400-05	APPROACH TO LANE CLOSURE FREEWAY/EXPRESSWAY
4-12	BRIDGE REPAIR DETAILS	701401-06	LANE CLOSURE FREEWAY/EXPRESSWAY
13-16A	TRAFFIC CONTROL PLANS	701606-08	URBAN LANE CLOSURE MULTILANE 2W WITH MOUNTABLE MEDIAN
17	DISTRICT ONE TYPICAL PAVEMENT MARKINGS (TC-13)	701801-05	LANE CLOSURE MULTILANE 1W OR 2W OR SIDEWALK COLSURE
18	ARTERIAL ROAD INFORMATION SIGN (TC-22)	701901-02	TRAFFIC CONTROL DEVICES
		704001-07	TEMPORARY CONCRETE BARRIER

BEFORE STARTING ANY EXCAVATION, THE CONTRACTOR SHALL CALL "J.U.L.I.E." AT (800) 892-0123 OR 811 FOR FIELD LOCATIONS OF BURIED ELECTRIC, TELEPHONE AND GAS UTILITIES. 48 HOUR NOTIFICATION IS REQUIRED.

THE CONTRACTOR SHALL COORDINATE CONSTRUCTION ACTIVITIES WITH UTILITY COMPANIES, AND THE VILLAGE OF LINCOLNWOOD.

THE CONTRACTOR WILL NOT BE ALLOWED TO SET UP A YARD OR FIELD OFFICE ON STATE PROPERTY WITHOUT WRITTEN PERMISSION FROM THE DEPARTMENT.

ALL DAMAGE TO EXISTING PAVEMENT MARKINGS OR RAISED REFLECTIVE PAVEMENT MARKERS OUTSIDE THE REMOVAL LINE SHOWN ON THE PLANS SHALL BE REPLACED AT NO ADDITIONAL COST TO THE DEPARTMENT.

BEFORE BEGINNING ANY WORK, THE CONTRACTOR SHALL RETAIN AND RECORD FOR FUTURE REFERENCE, ALL EXISTING PAVEMENT MARKING LINES (AND RAISED REFLECTIVE PAVEMENT MARKERS) IN ORDER THAT THESE LOCATIONS CAN BE RE-ESTABLISHED FOR STRIPING. EXACT LOCATIONS OF ALL PAVEMENT MARKINGS SHALL BE AS DIRECTED BY THE ENGINEER.

THE CONTRACTOR SHALL CONTACT THE DISTRICT ONE ARTERIALS TRAFFIC CONTROL SUPERVISOR AT (847)705-4470 AND THE DISTRICT ONE EXPRESSWAY TRAFFIC CONTROL SUPERVISOR AT (847)705-4151 A MINIMUM OF 72 HOURS IN ADVANCE OF BEGINNING WORK.

THE ENGINEER SHALL CONTACT WALLY CZARNY, AREA TRAFFIC FIELD TECHNICIAN, AT (847)715-8419 A MINIMUM OF TWO (2) WEEKS PRIOR TO THE PLACEMENT OF PERMANENT PAVEMENT MARKINGS.

THESE PLANS HAVE BEEN PREPARED FROM NOTES RECEIVED FROM THE BUREAU OF BRIDGE INSPECTORS.

DO NOT SCALE PLANS FOR CONSTRUCTION DIMENSIONS.

THE "ARTERIAL ROAD INFORMATION SIGN (TC-22)" IS APPLICABLE ONLY TO ARTERIAL ROADS AND SHALL NOT BE APPLIED TO EXPRESSWAYS.

FILE NAME =	USER NAME = curryw	DESIGNED -	REVISED -	STATE OF ILLINOIS DEPARTMENT OF TRANSPORTATION	INDEX OF SHEETS GENERAL NOTES	F.A.J RTE.	SECTION	COUNTY	TOTAL SHEETS	SHEET NO.
c:\pwork\pwork\curryw\2288452\0162	11-Design.dgn	DRAWN -	REVISED -			94	2011-066-1	COOK	18	2
	PLOT SCALE = 100.4408' / in.	CHECKED -	REVISED -			CONTRACT NO. 60P85				
	PLOT DATE = 3/15/2012	DATE -	REVISED -			ILLINOIS FED. AID PROJECT				
						SCALE:	SHEET	OF	SHEETS	STA. TO STA.

SUMMARY OF QUANTITIES			URBAN 100% STATE TOTAL QUANTITIES		CONSTRUCTION TYPE CODE 0014				
CODE NO	ITEM	UNIT							
42001300	PROTECTIVE COAT	SO YD	1886	1886					
50102400	CONCRETE REMOVAL	CU YD	95.1	95.1					
50157300	PROTECTIVE SHIELD	SO YD	849	849					
50300255	CONCRETE SUPERSTRUCTURE	CU YD	185	185					
50800205	REINFORCEMENT BARS, EPOXY COATED	POUND	30,900	30,900					
50901730	BRIDGE FENCE RAILING	FOOT	472	472					
67000400	ENGINEER'S FIELD OFFICE, TYPE A	CAL MO	3	3					
67100100	MOBILIZATION	L SUM	1	1					
70200100	NIGHTTIME WORK ZONE LIGHTING	L SUM	1	1					
70301000	WORK ZONE PAVEMENT MARKING REMOVAL	SO FT	344	344					
70400100	TEMPORARY CONCRETE BARRIER	FOOT	312.5	312.5					
70400200	RELOCATE TEMPORARY CONCRETE BARRIER	FOOT	312.5	312.5					
* 72000200	SIGN PANEL - TYPE 2	SQ FT	24	24					
* 78008210	POLYUREA PAVEMENT MARKING TYPE I - LINE 4"	FOOT	129	129					
78300100	PAVEMENT MARKING REMOVAL	SO FT	43	43					
X2011000	TEMPORARY FENCE (SPECIAL)	FOOT	28	28					

* Specialty Items

SUMMARY OF QUANTITIES			URBAN 100% STATE TOTAL QUANTITIES		CONSTRUCTION TYPE CODE 0014				
CODE NO	ITEM	UNIT							
X7010216	TRAFFIC CONTROL AND PROTECTION, (SPECIAL)	L SUM	1	1					
X7011015	TRAFFIC CONTROL AND PROTECTION (EXPRESSWAYS)	L SUM	1	1					
X7030030	WET REFLECTIVE TEMPORARY TAPE TYPE III, 4 INCH	FOOT	1032	1032					
Z0001905	STRUCTURAL STEEL REPAIR	POUND	1070	1070					
Z0012754	STRUCTURAL REPAIR OF CONCRETE (DEPTH EQUAL TO OR LESS THAN 5 INCHES)	SO FT	900	900					
Z0012755	STRUCTURAL REPAIR OF CONCRETE (DEPTH GREATER THAN 5 INCHES)	SO FT	48	48					
Z0021914	SILICONE JOINT SEALER, 2.75"	FOOT	145	145					
Z0030240	IMPACT ATTENUATORS, TEMPORARY (NON-REDIRECTIVE), TEST LEVEL 2	EACH	1	1					
Z0030340	IMPACT ATTENUATORS, RELOCATE (NON-REDIRECTIVE), TEST LEVEL 2	EACH	1	1					
Z0030850	TEMPORARY INFORMATION SIGNING	SO FT	51.4	51.4					

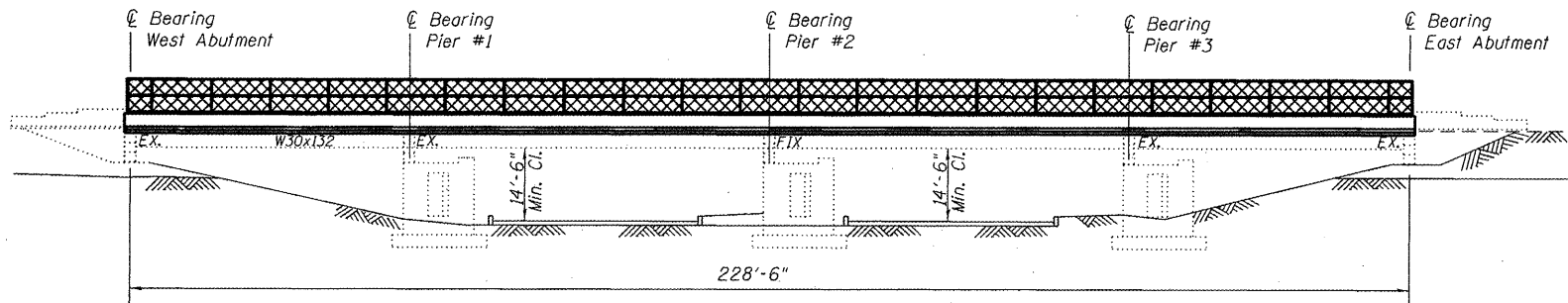
FILE NAME =	USER NAME = curryw	DESIGNED -	REVISED -
c:\pwworking\curryw\02288452\0162211-Design.dwg		DRAWN -	REVISED -
		CHECKED -	REVISED -
		DATE -	REVISED -

STATE OF ILLINOIS
DEPARTMENT OF TRANSPORTATION

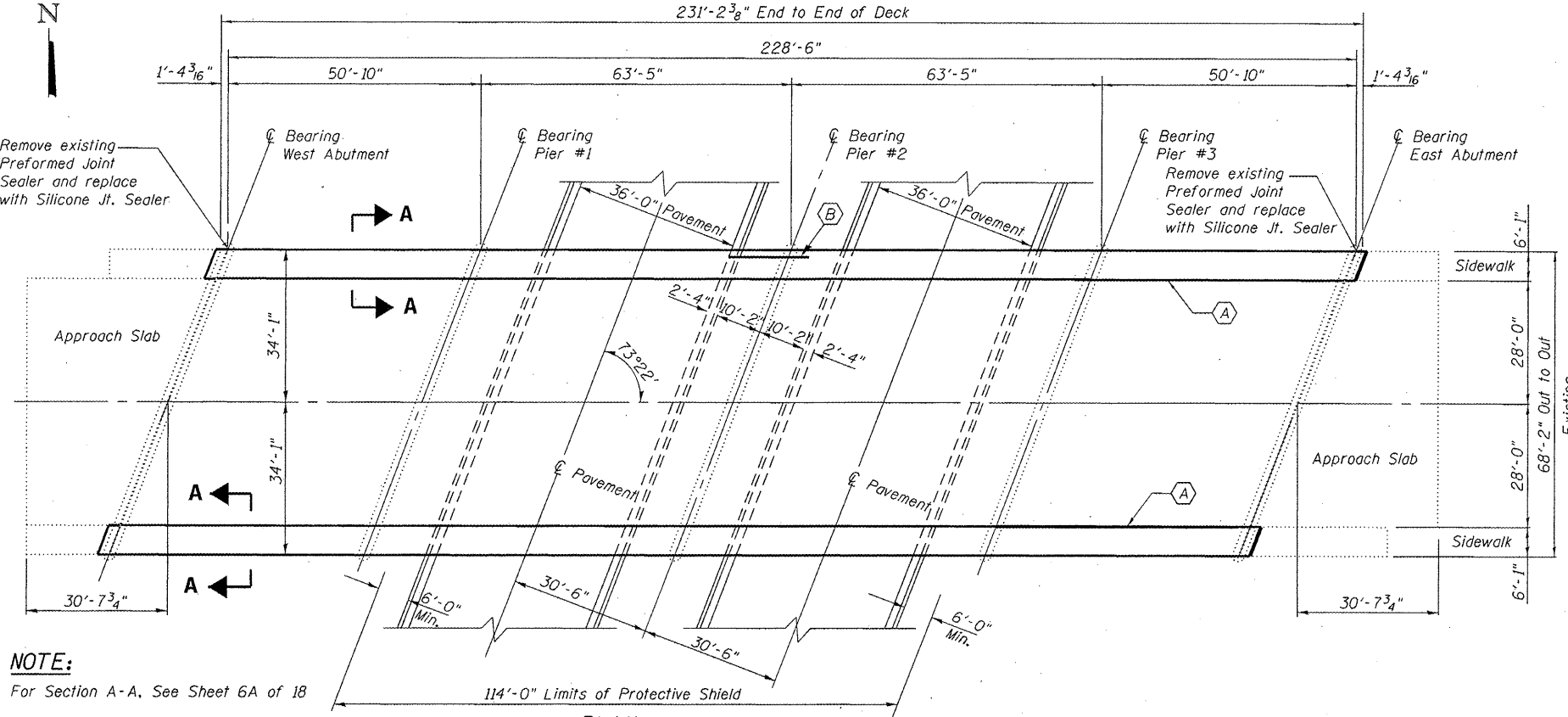
SUMMARY OF QUANTITIES			
SCALE:	SHEET NO. OF SHEETS	STA.	TO STA.

F.A.I. RTE.	SECTION	COUNTY	TOTAL SHEETS	SHEET NO.
94	2011-066-1	COOK	18	3
FED. ROAD DIST. NO. 1 ILLINOIS FED. AID PROJECT			CONTRACT NO. 60P85	

Rev.



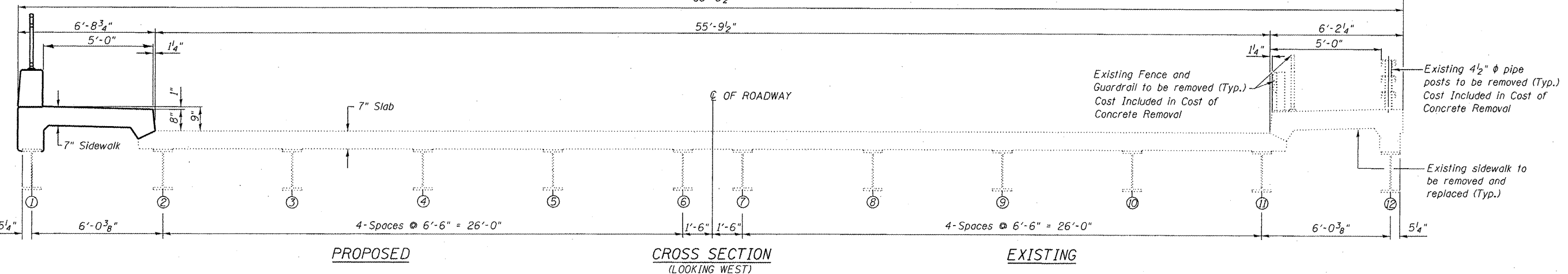
ELEVATION



PLAN

- (A) Remove and replace sidewalk and railing
- (B) Structural Steel Repair

NOTE:
For Section A-A, See Sheet 6A of 18



PROPOSED

**CROSS SECTION
(LOOKING WEST)**

EXISTING

GENERAL NOTES

The existing structural steel coating contains lead. The Contractor should take appropriate precautions to deal with the presence of lead on this project.

Existing reinforcement extending into the removal area shall be cleaned, straightened and incorporated into the new construction. Any reinforcement bars that are damaged during concrete removal shall be replaced with an approved bar splicer or anchorage system. Cost included with Concrete Removal.

Prior to pouring the new concrete deck, all heavy or loose rust, loose mill scale, and other loose or potentially detrimental foreign material shall be removed from the surfaces in contact with concrete. Tightly adhered paint may remain unless otherwise noted. Removal shall be accomplished by methods that will not damage the steel and the cost will be included in the pay item covering removal of the existing concrete.

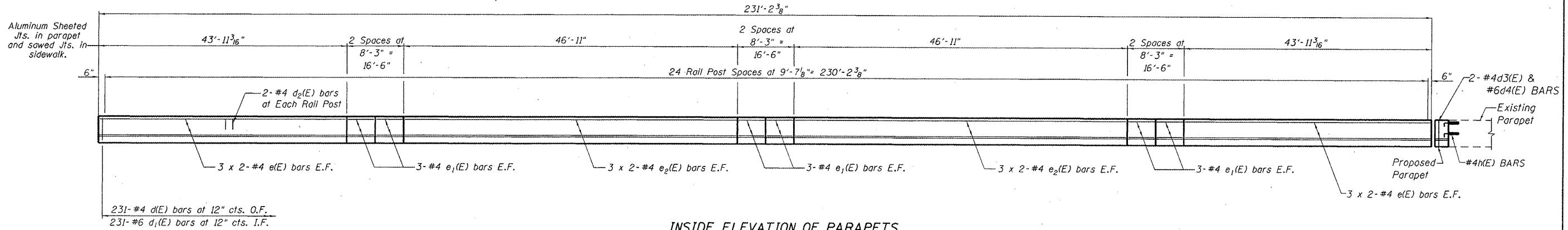
Plan dimensions and details relative to existing plans are subject to nominal construction variations. The Contractor shall field verify existing dimensions and details affecting new construction and make necessary approved adjustments prior to construction or ordering of materials. Such variations shall not be cause for additional compensation for a change in scope of the work, however, the Contractor will be paid for the quantity actually furnished based at the unit price bit for the work.

TOTAL BILL OF MATERIAL

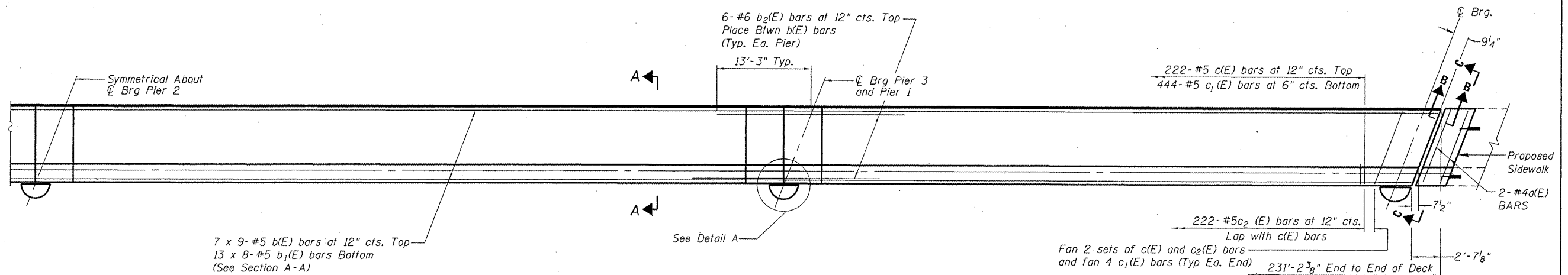
ITEM	UNIT	QUANTITY
Concrete Removal	Cu. Yd.	95.1
Concrete Superstructure	Cu. Yd.	185
Reinforcement Bars, Epoxy Coated	Pound	30900
Bridge Fence Railing	Foot	472
Protective Coat	Sq. Yd.	1886
Protective Shield	Sq. Yd.	849
Silicone Joint Sealer, 2 3/4"	Foot	145
Structural Steel Repair	Pound	1070
Structural Repair of Concrete < 5"	Sq. Ft.	900
Structural Repair of Concrete > 5"	Sq. Ft.	48



David Carl Puzey 3/26/12
Expires 11/30/12



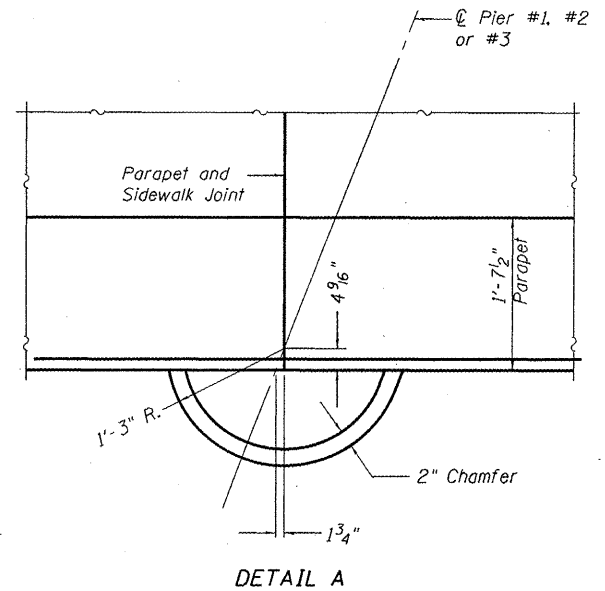
INSIDE ELEVATION OF PARAPETS



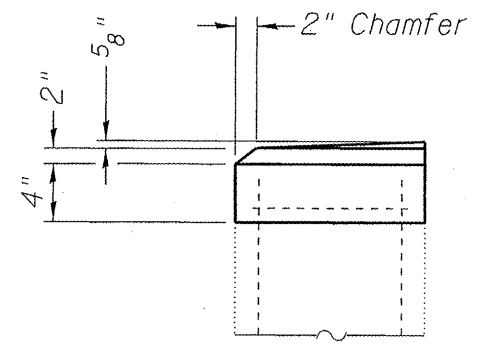
PARTIAL PLAN (SOUTH SIDEWALK)

For parapet reinforcement and joint locations, see Inside Elevation of Parapets.

NOTE:
For Section A-A, See Sheet 6A of 18
For Section B-B, and C-C, See Sheet 6 of 18



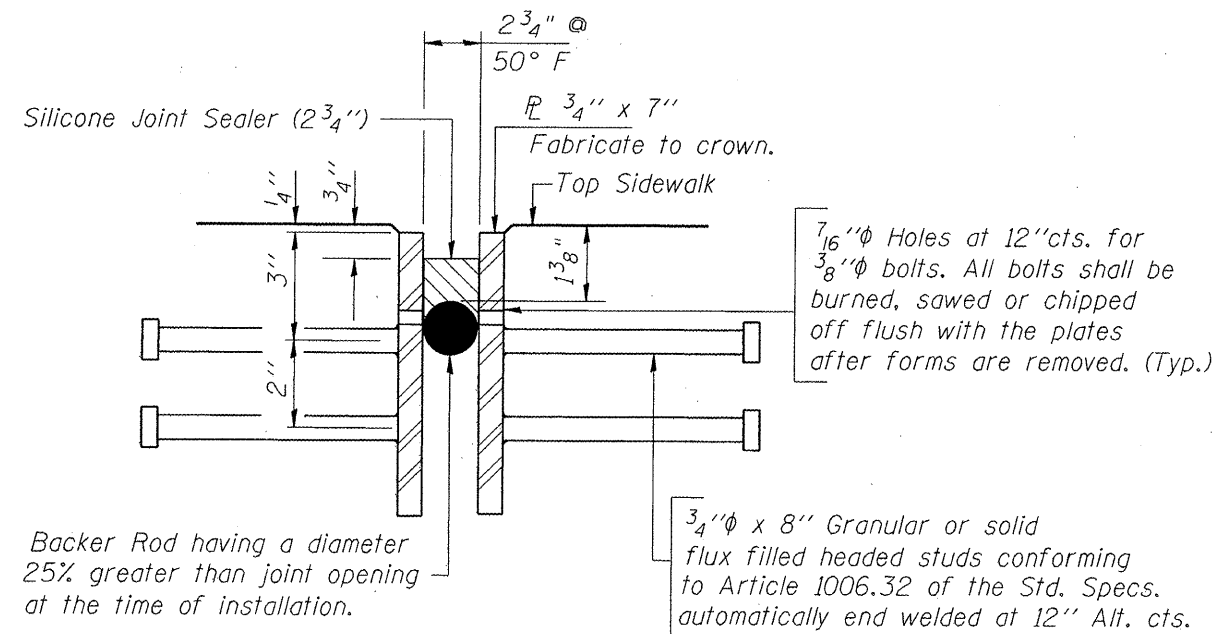
DETAIL A



TOP OF DECORATIVE COLUMNS AT PIERS AND ABUTMENTS

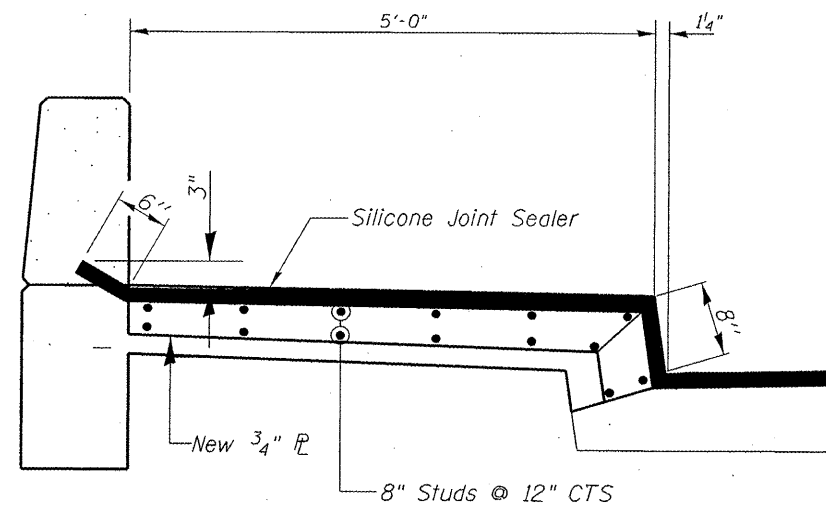
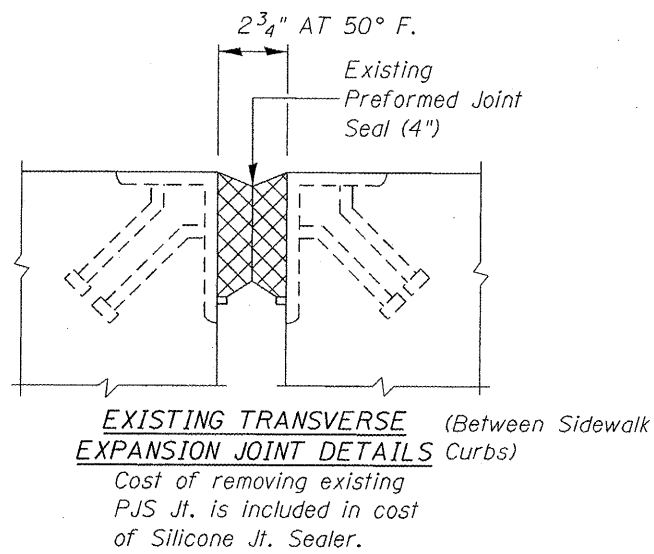
Quantity included with Concrete Superstructures

BAR LAP TABLE	
SIZE	LENGTH
#4	1' - 8"
#5	2' - 7"

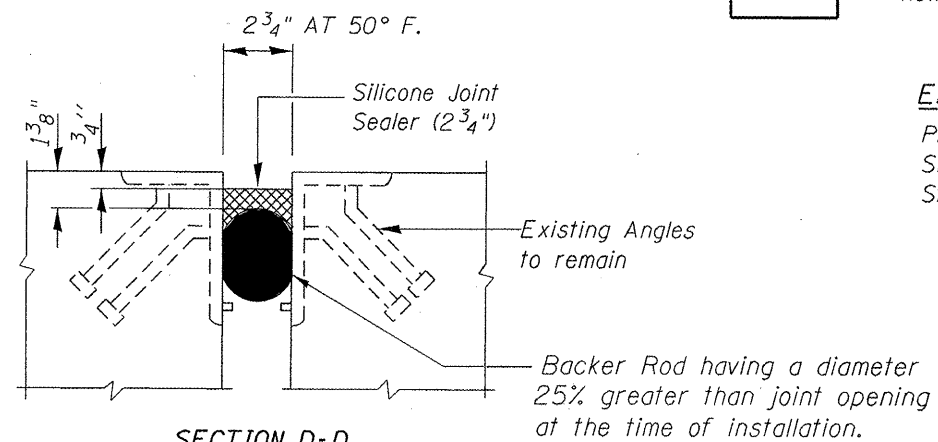


SECTION B-B

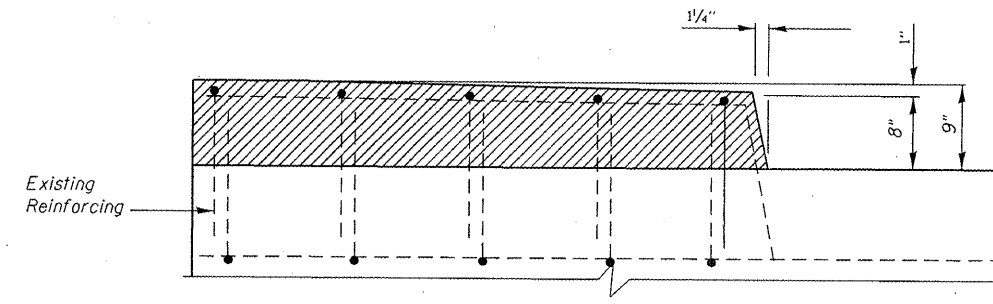
3/4" ϕ x 8" Granular or solid flux filled headed studs conforming to Article 1006.32 of the Std. Specs. automatically end welded at 12" Alt. cts.



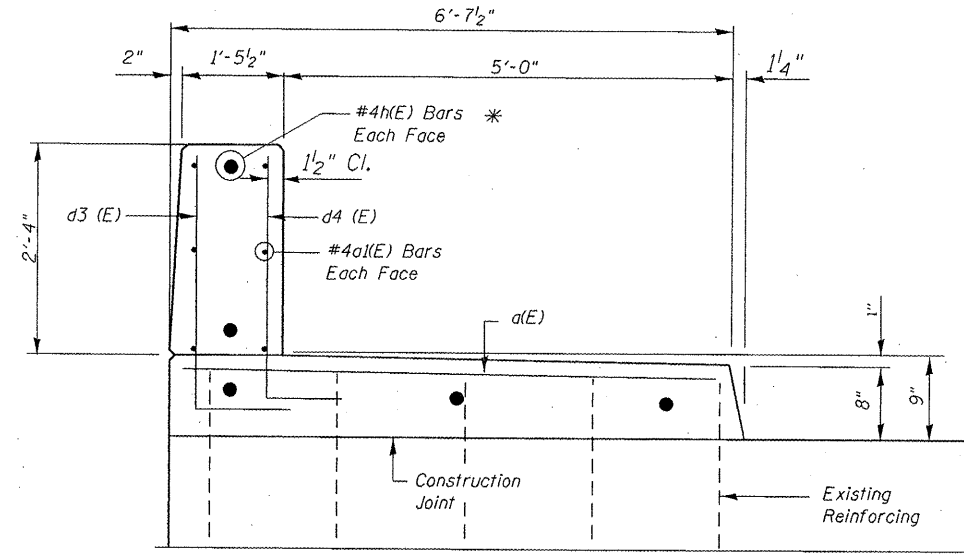
END OF SEAL TREATMENT
Proposed 3/4" P & 3/4" ϕ x 8" Studs Included in Cost of Structural Steel Repairs



SECTION D-D



SECTION C-C (EXISTING)



SECTION C-C Dimension at Right Angle to \perp Roadway (PROPOSED)

NOTE:
#4 h(E) Bars shall be epoxy grouted according to Art. 584 of the Standard Specifications.
* Drill and Grout #4h(E) BARS @ 2'-0" CTS

BILL OF MATERIALS

ITEM	UNIT	QUANTITY
STRUCTURAL STEEL REPAIR	POUNDS	750

FILE NAME =	USER NAME = curryaw	DESIGNED - MVT	REVISED -
c:\pwwork\pwwork\curryaw\d0288452\01622	11-Design.dgn	DRAWN - MVT	REVISED -
	PLOT SCALE = 100.4408 ' / in.	CHECKED - AWC	REVISED -
	PLOT DATE = 3/23/2012	DATE - 2-29-12	REVISED -

STATE OF ILLINOIS
DEPARTMENT OF TRANSPORTATION

DEVON AVENUE AT ILL 94 (EDENS EXPRESSWAY)
SILICONE JOINT SEALER DETAILS
S.N. 016-0834

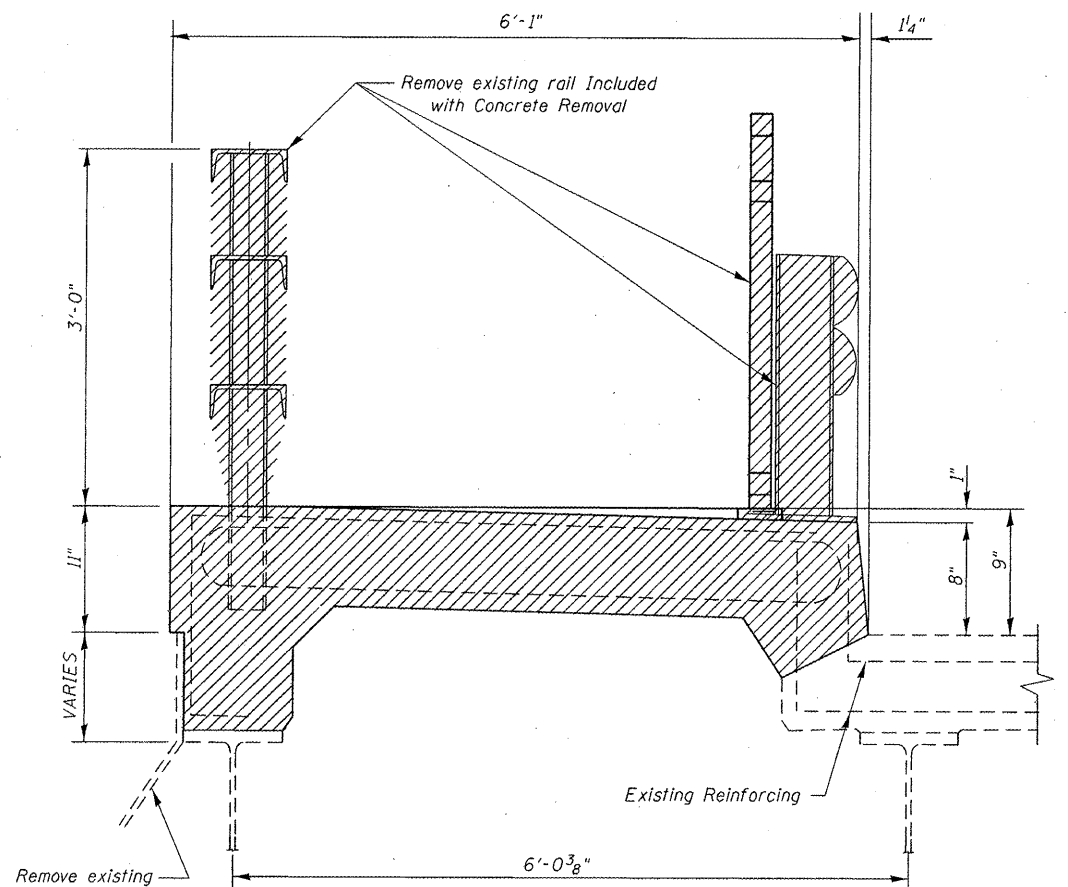
SCALE: SHEET 3 OF 9 SHEETS STA. TO STA.

F.A.I. RTE. 94	SECTION 2011-066-1	COUNTY COOK	TOTAL SHEETS 18	SHEET NO. 6
CONTRACT NO. 60P85				ILLINOIS FED. AID PROJECT

BILL OF MATERIALS

Bar	No.	Size	Length	Shape
a(E)	8	#4	6'-5"	—
a1(E)	24	#4	10"	—
b(E)	126	#5	28'-0"	—
b ₁ (E)	208	#5	31'-2"	—
b ₂ (E)	36	#6	26'-6"	—
c(E)	444	#5	7'-3"	┘
c ₁ (E)	888	#5	7'-7"	┘
c ₂ (E)	444	#5	3'-6"	┘
d(E)	462	#4	4'-10"	┘
d ₁ (E)	462	#6	4'-8"	┘
d ₂ (E)	96	#4	3'-5"	┘
d ₃ (E)	8	#4	3'-7"	┘
d ₄ (E)	8	#6	3'-6"	┘
e(E)	24	#4	23'-6"	—
e ₁ (E)	72	#4	8'-0"	—
e ₂ (E)	48	#4	25'-7"	—
e ₃ (E)	24	#4	24'-0"	—
h(E)	20	#4	1'-6"	┘
Reinforcement Bars (Epoxy Coated)		Pound	30900	
Concrete Removal		Cu. Yd.	95.1	
Concrete Superstructure		Cu. Yd.	185	

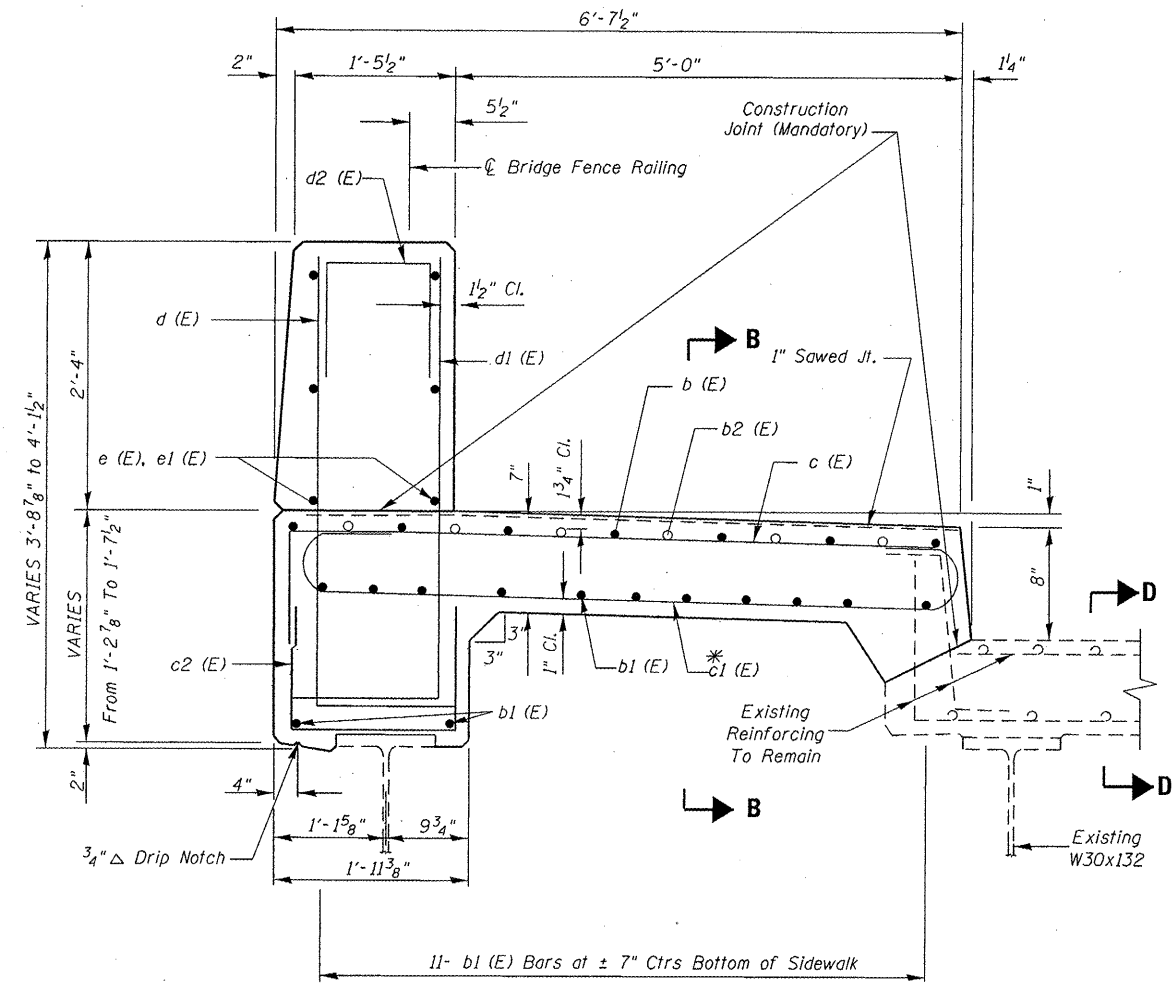
Reinforcement bars designated (E) shall be epoxy coated.
 Bars indicated thus 1 x 8-#5 etc. indicates 1 line of bars with 8 lengths per line.



SECTION A-A
 (HATCHED AREA INDICATES REMOVAL)
 (EXISTING)

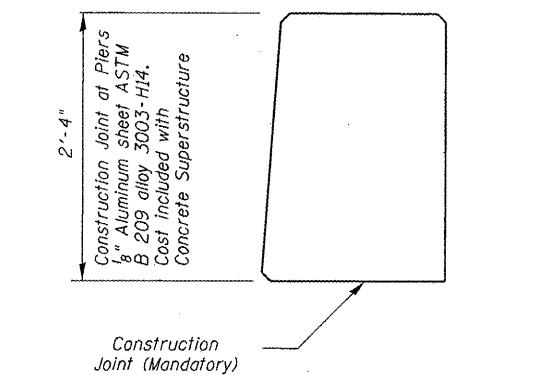
Remove existing flashing. Cost Included with Concrete Removal

NOTE:
 For Section B-B, See Sheet 6 of 18
 For Section D-D, See Sheet 6 of 18

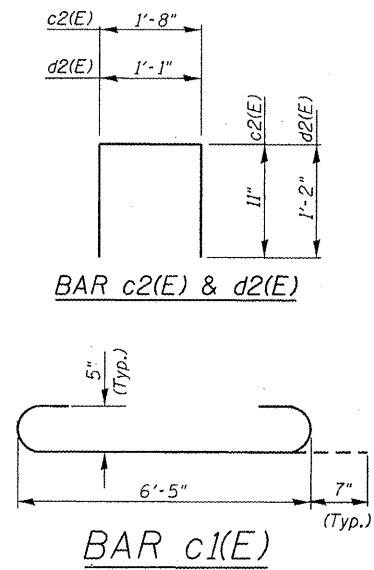


SECTION A-A
 (PROPOSED)

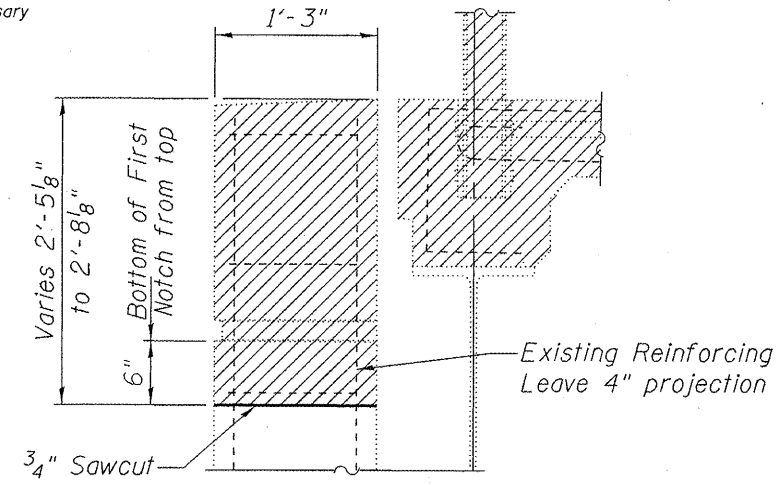
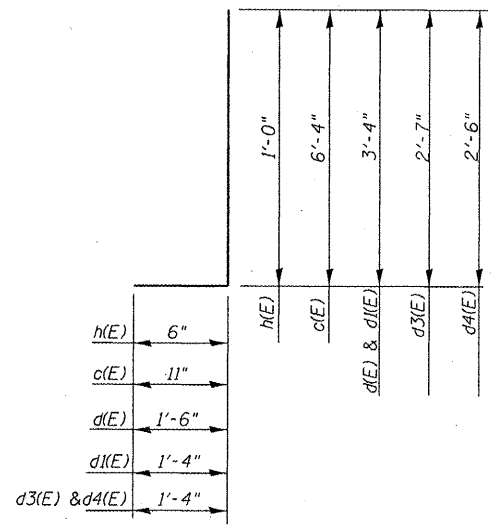
* The hooks of c₁(E) Bars as necessary to maintain clearance



PARAPET JOINT DETAILS



BAR c(E), d(E), d1(E), d3(E), d4(E), & h(E)



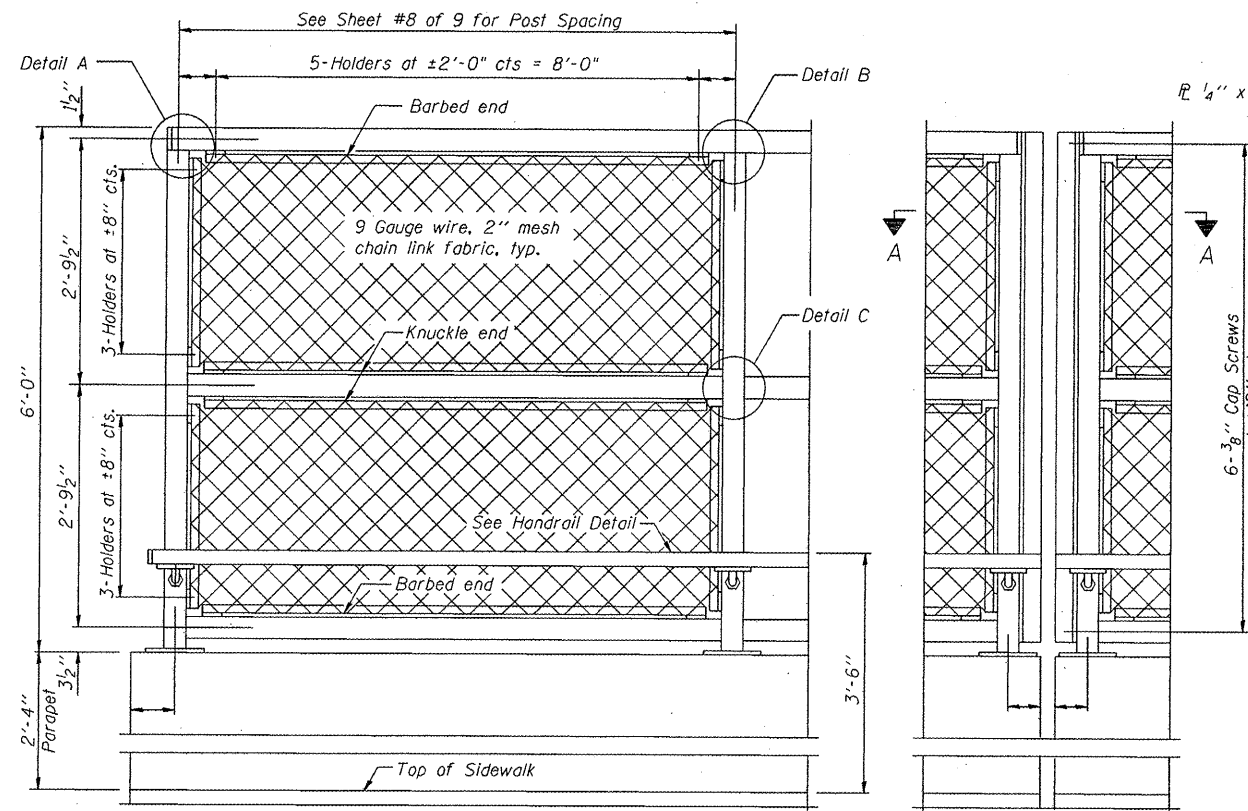
DETAIL 1
DECORATIVE COLUMNS
AT PIERS AND ABUTMENTS

FILE NAME =	USER NAME = curryow	DESIGNED - MVT	REVISED -
c:\pwwork\pwwork\curryow\d0288452\0162211-Design.dgn	11-Design.dgn	DRAWN - MVT	REVISED -
PLOT SCALE = 100.4408 / 10		CHECKED - AWC	REVISED -
PLOT DATE = 3/23/2012		DATE - 2-29-12	REVISED -

STATE OF ILLINOIS
DEPARTMENT OF TRANSPORTATION

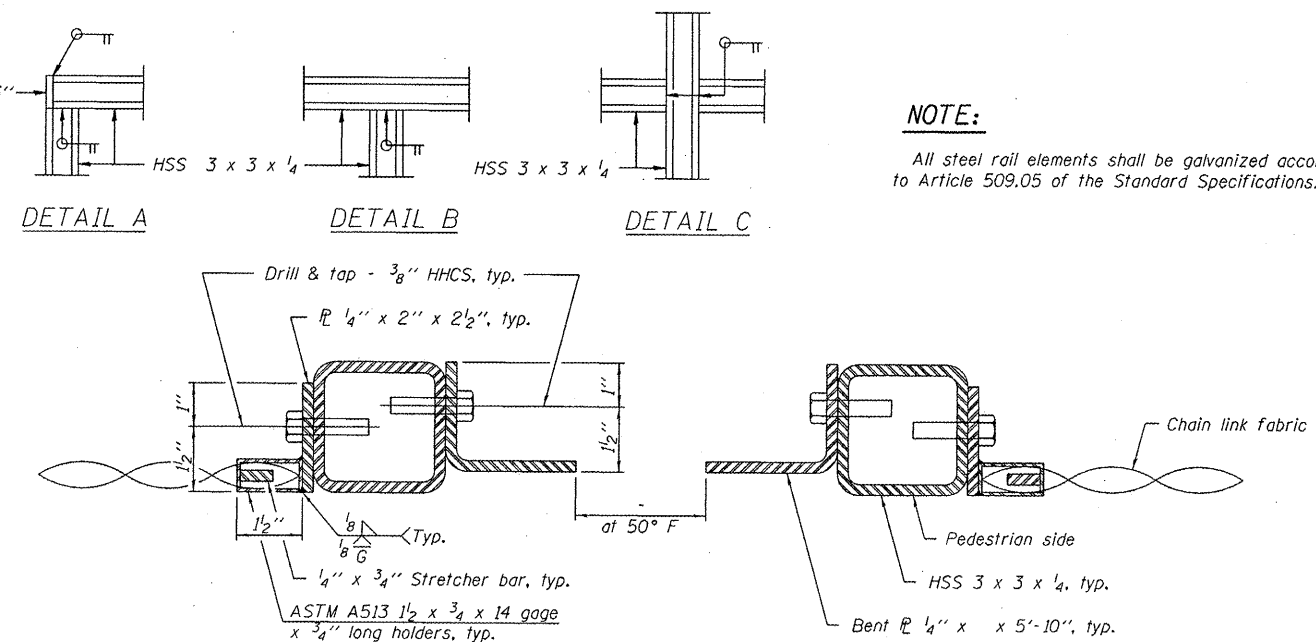
DEVON AVENUE AT ILL 94 (EDENS EXPRESSWAY)
PARAPET JOINT DETAILS
S.N. 016-0834

F.A.I. RTE.	SECTION	COUNTY	TOTAL SHEETS	SHEET NO.
94	2011-066-1	COOK	18	6A
SCALE: SHEET 3A OF 9 SHEETS STA. TO STA.			CONTRACT NO. 60P85	
ILLINOIS FED. AID PROJECT				



ELEVATION
(Inside Face)

ELEVATION
(At Expansion Joint)

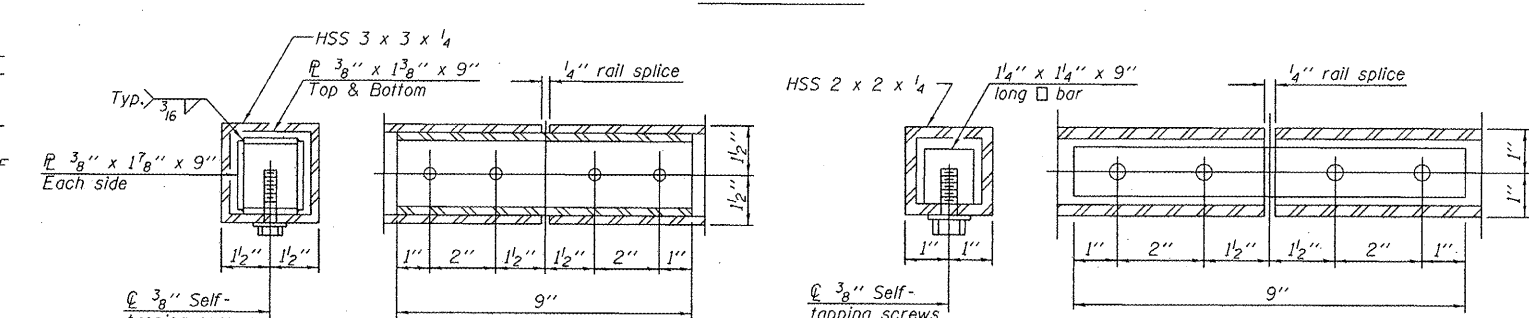


DETAIL A

DETAIL B

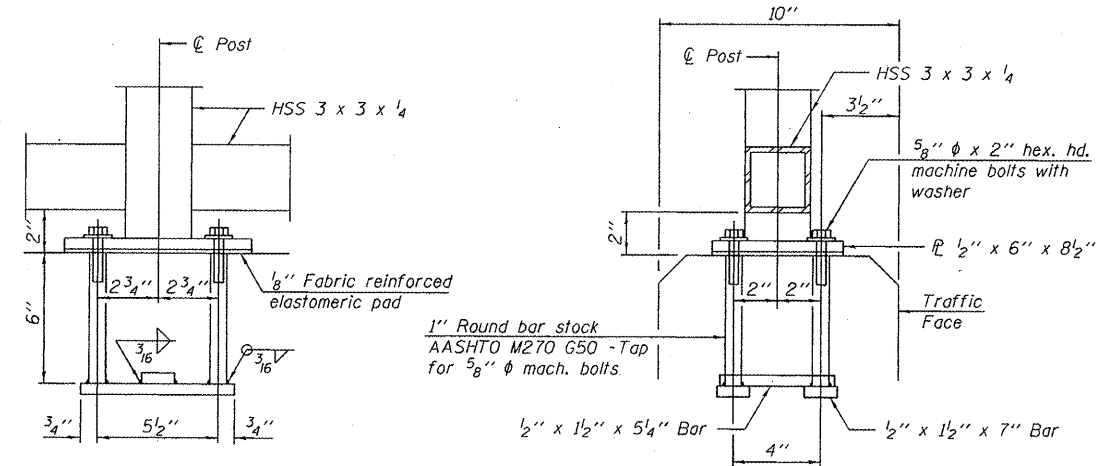
DETAIL C

SECTION A-A



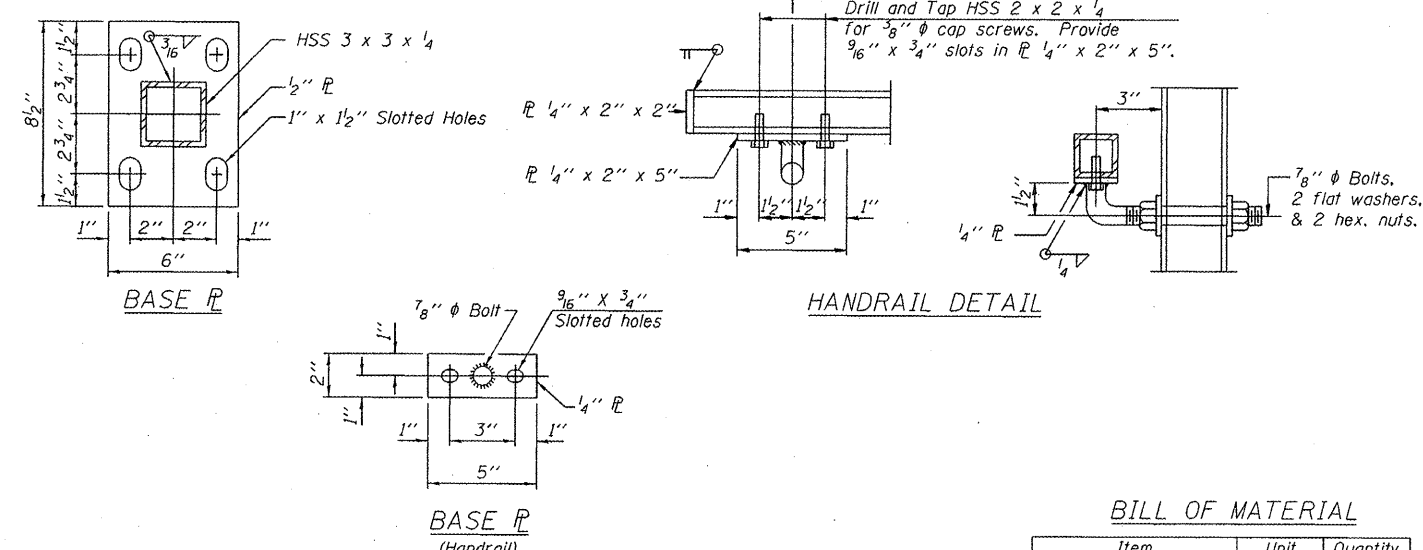
RAIL SPLICE

HANDRAIL SPLICE



ANCHOR BOLT DETAILS

In lieu of the cast-in-place anchor device shown, the Contractor has the option of drilling and setting 5/8" anchor rods according to Article 509.06 of the Standard Specifications. Embedment shall be according to the manufacturer's specifications.



BASE R

HANDRAIL DETAIL

BASE R
(Handrail)

BILL OF MATERIAL

Item	Unit	Quantity
Bridge Fence Railing	Foot	472

R-28 7-1-10 (10'-0" Maximum Post Spacing)

FILE NAME =	USER NAME = curryw	DESIGNED - MVT	REVISED -
c:\pwork\pvidot\curryw\d0288452\0162211-Design.dgn		DRAWN - MVT	REVISED -
PLOT SCALE = 100.4408 1/16 in.		CHECKED - AWC	REVISED -
PLOT DATE = 3/23/2012		DATE - 2-29-12	REVISED -

STATE OF ILLINOIS
DEPARTMENT OF TRANSPORTATION

DEVON AVENUE AT ILL 94 (EDENS EXPRESSWAY)
BRIDGE FENCE RAILING, PARAPET MOUNTED
S.N. 016-0834

F.A.I. RTE. 94	SECTION 2011-066-1	COUNTY COOK	TOTAL SHEETS 18	SHEET NO. 7
SCALE: SHEET 4 OF 9 SHEETS STA. TO STA.			CONTRACT NO. 60P85	
ILLINOIS FED. AID PROJECT				

NOTES

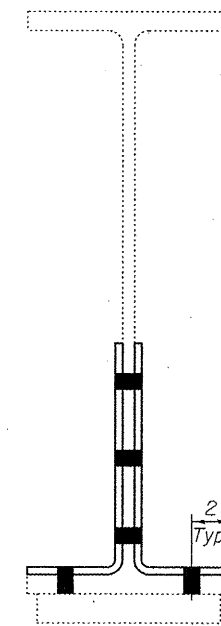
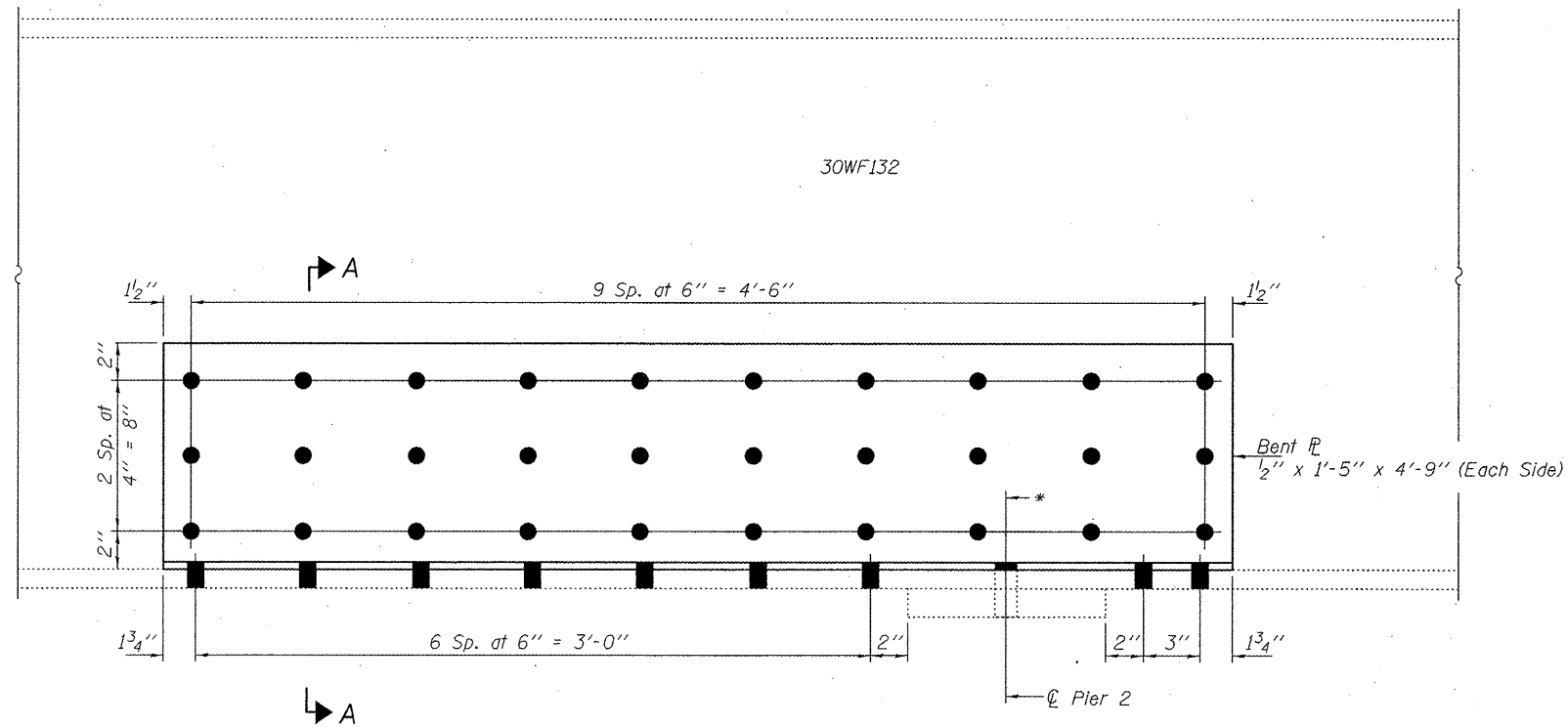
All structural steel shall conform to AASHTO Classification M-270 Gr. 36, unless otherwise noted.

Cost of removal and re-installation of all members necessary to complete the work as detailed on the plans and as specified in the Special Provisions shall be included with Structural Steel Repair.

Existing structural steel that will be in contact with new structural steel shall be cleaned and painted prior to erection as required by the Special Provision "Cleaning and Painting Contact Surface Areas of Existing Steel Structures".

All structural steel shall be shop painted with the inorganic zinc rich primer per AASHTO M300, Type 1. Cost included with Structural Steel Repair.

Fasteners shall be high strength bolts. Bolts $\frac{7}{8}$ " ϕ , open holes $\frac{15}{16}$ " ϕ , unless otherwise noted.



SECTION A-A

BEAM 12 REPAIR
(Looking South)

* Hole in bent plate to be field drilled using hole in beam and bearing plate as template.

BILL OF MATERIAL

ITEM	UNIT	QUANTITY
Structural Steel Repair	Pound	320

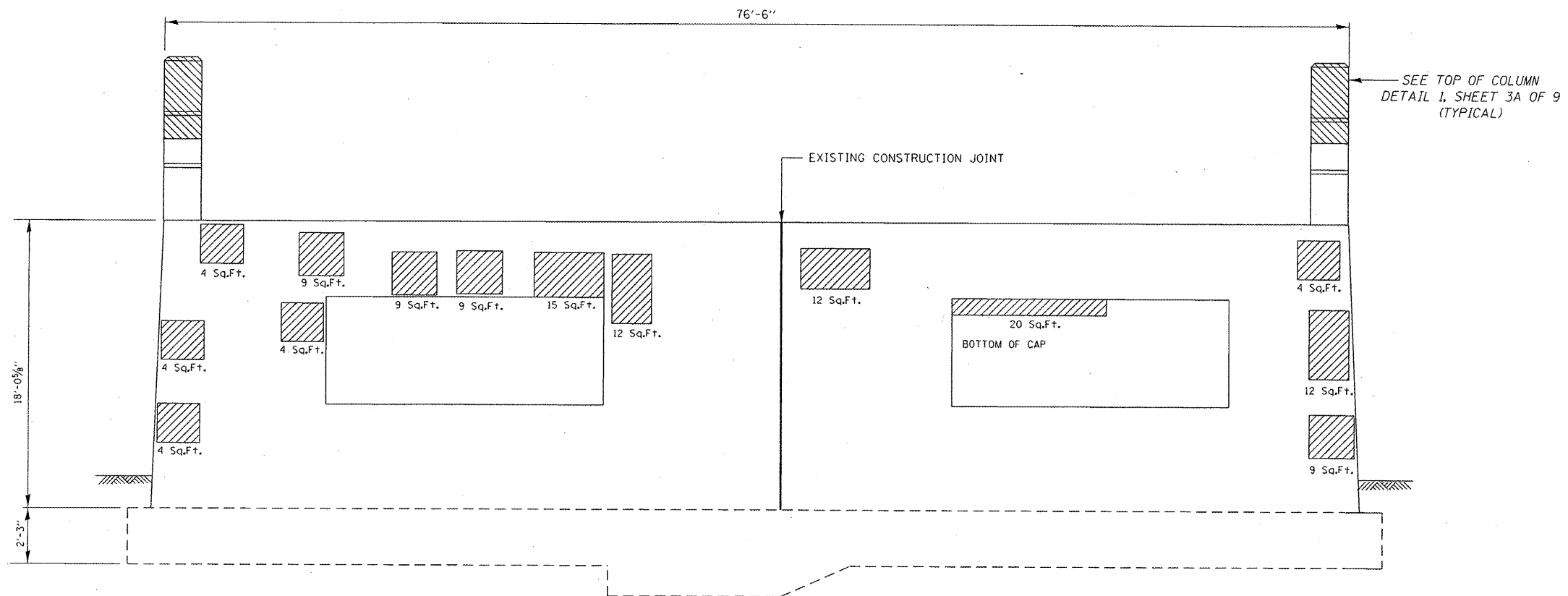
DESIGNED <i>DAB</i>	EXAMINED	DATE <i>MARCH 26, 2012</i>
CHECKED <i>VHV</i>	ENGINEER OF STRUCTURAL SERVICES	
DRAWN <i>balva</i>	PASSED	REVISED
CHECKED <i>DAB VHV</i>	ENGINEER OF BRIDGES AND STRUCTURES	REVISED

STATE OF ILLINOIS
DEPARTMENT OF TRANSPORTATION

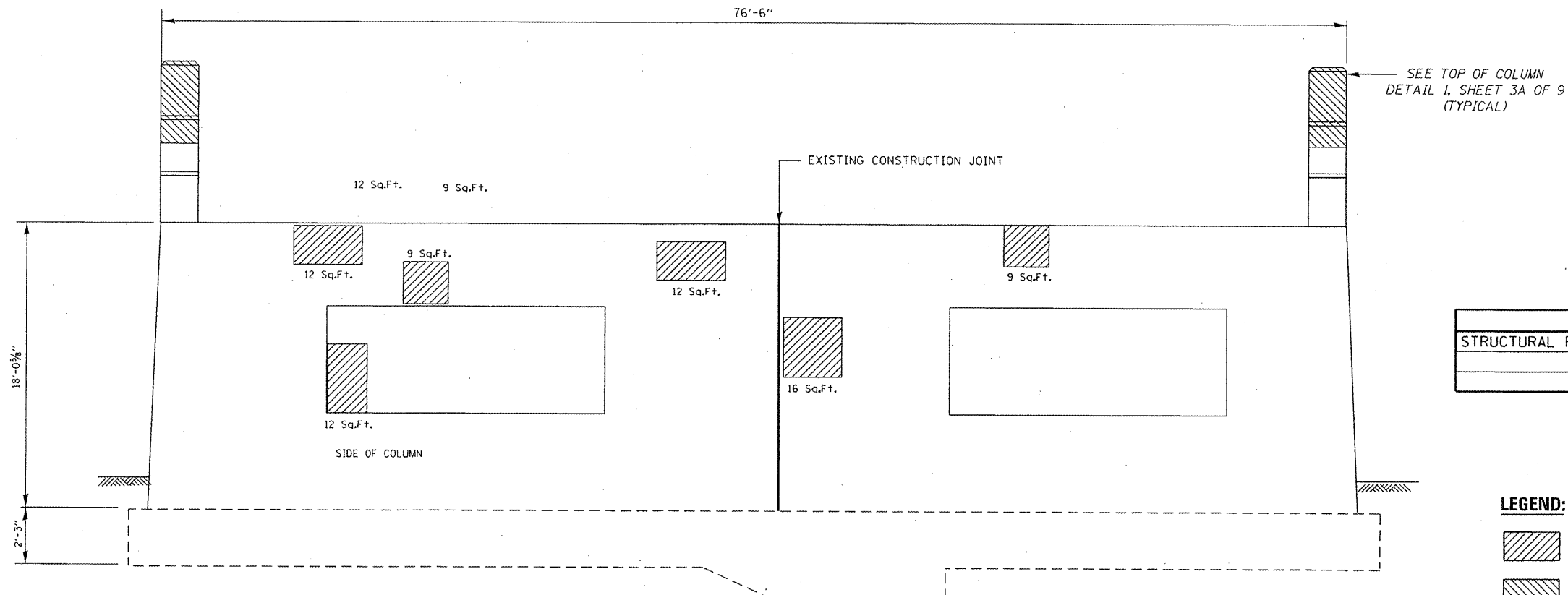
REPAIR DETAILS
SN 016-0834

SHEET NO. **5** OF **9** SHEETS

F.A.I. RTE.	SECTION	COUNTY	TOTAL SHEETS	SHEET NO.
94	2011-066-1	COOK	18	8
CONTRACT NO. 60P85			ILLINOIS FED. AID PROJECT	



**ELEVATION
EAST FACE**



**ELEVATION
WEST FACE**

BILL OF MATERIALS

ITEM	UNIT	QUANTITY
STRUCTURAL REPAIR OF CONCRETE ≤ 5"	SQ.FT.	230

LEGEND:

- STRUCTURAL REPAIR OF CONCRETE ≤ 5"
- CONCRETE REMOVAL AND CONCRETE SUPERSTRUCTURE

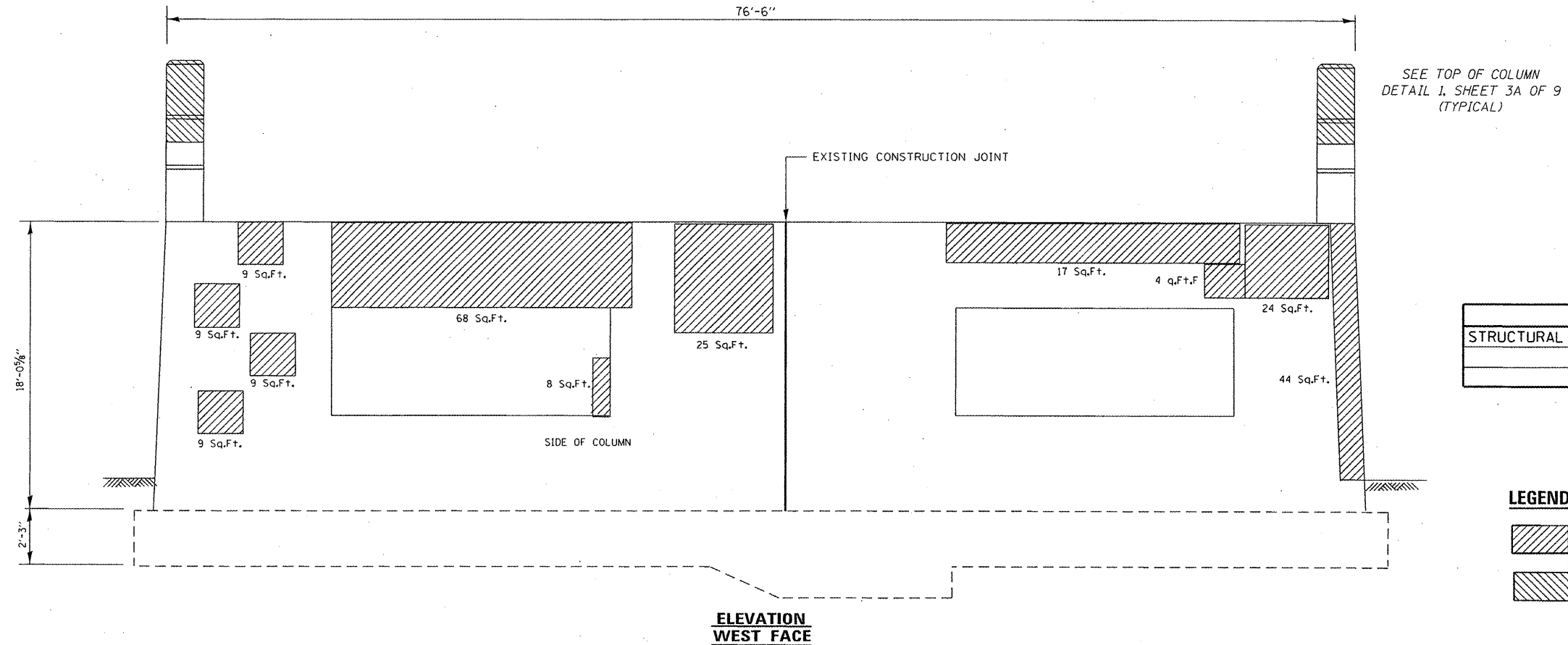
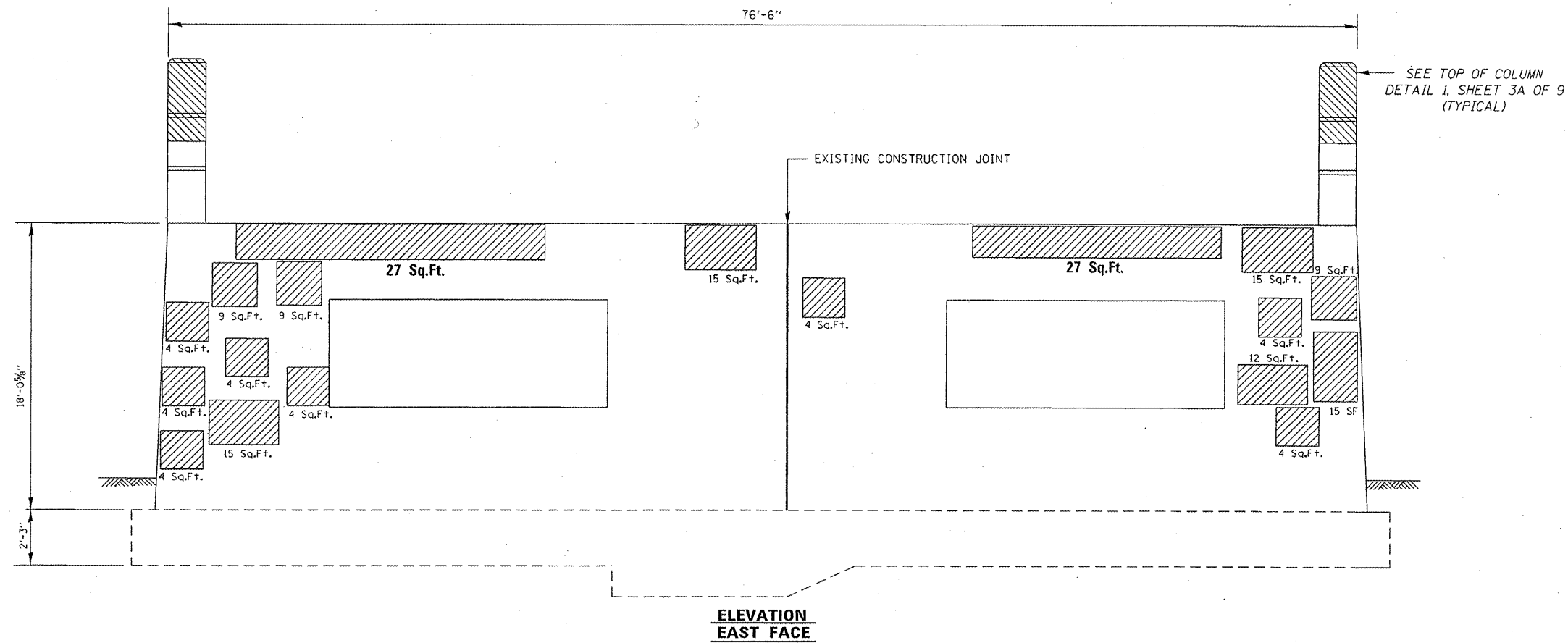
FILE NAME =	USER NAME = currygw	DESIGNED - MVT	REVISED -
		DRAWN - MVT	REVISED -
		CHECKED - AWC	REVISED -
		DATE - 2-29-12	REVISED -

**STATE OF ILLINOIS
DEPARTMENT OF TRANSPORTATION**

**DEVON AVENUE AT ILL 94 (EDENS EXPRESSWAY)
PIER NO. 1 REPAIR
S.N. 016-0834**

F.A.I. RTE. 94	SECTION 2011-066-I	COUNTY COOK	TOTAL SHEETS 18	SHEET NO. 9
CONTRACT NO. 60P85				ILLINOIS FED. AID PROJECT

SCALE: SHEET 6 OF 9 SHEETS STA. TO STA.



BILL OF MATERIALS

ITEM	UNIT	QUANTITY
STRUCTURAL REPAIR OF CONCRETE ≤ 5"	SO.FT.	425

LEGEND:

- STRUCTURAL REPAIR OF CONCRETE ≤ 5"
- CONCRETE REMOVAL AND CONCRETE SUPERSTRUCTURE

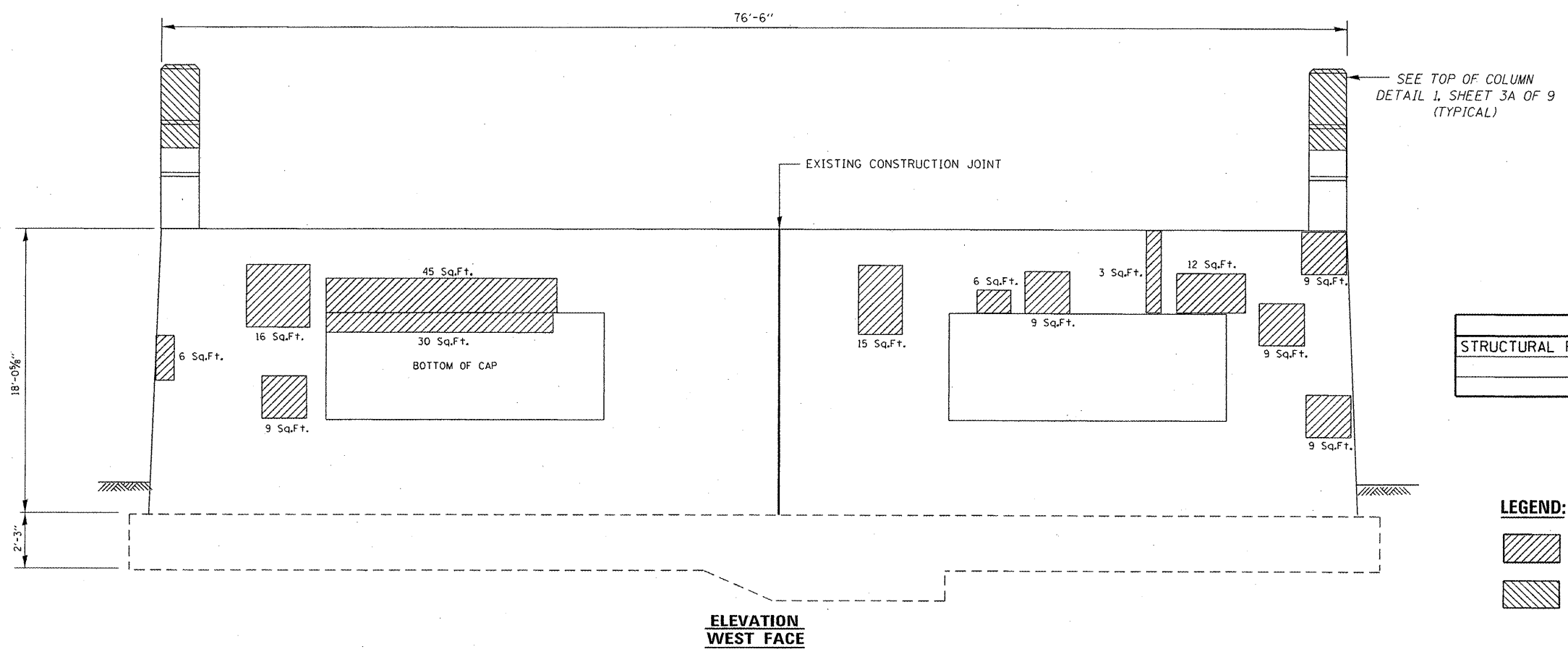
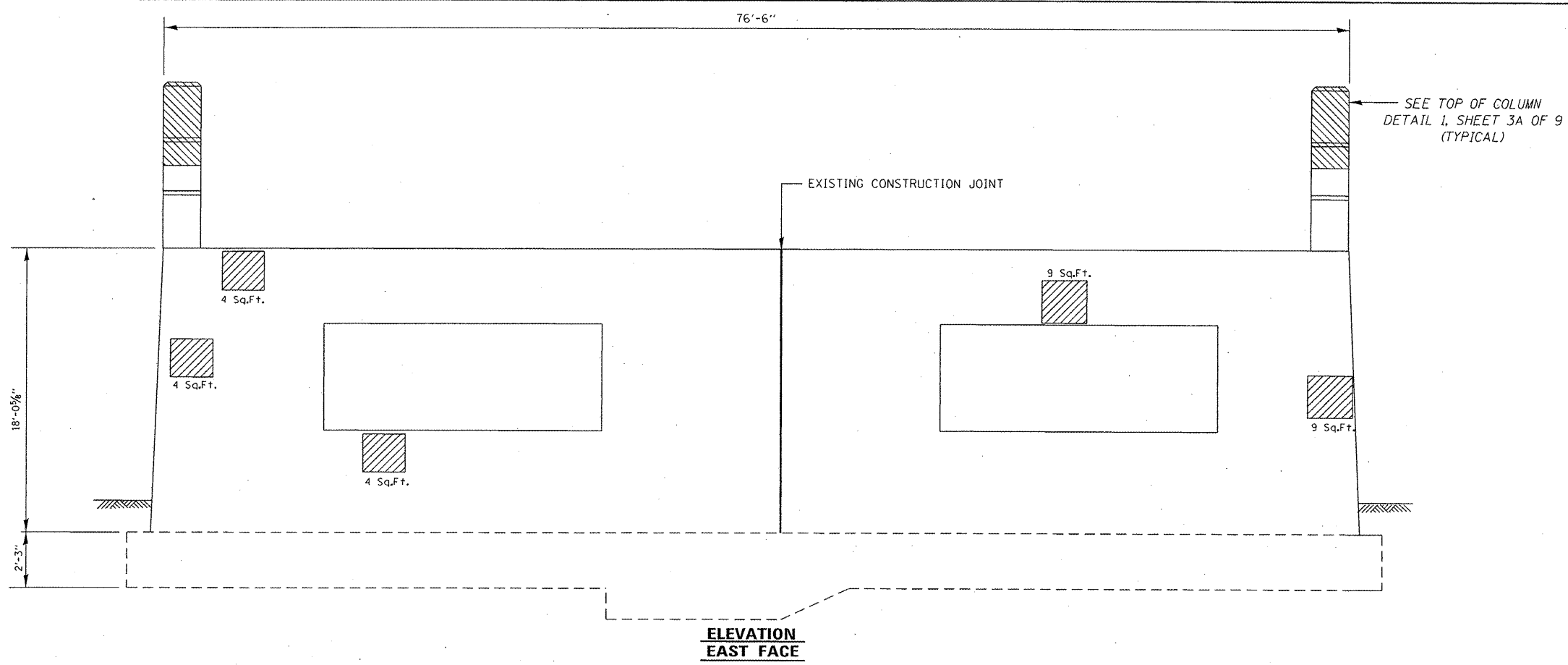
FILE NAME =	USER NAME = curryw	DESIGNED - MVT	REVISED -
c:\pw_work\pwsdot\curryw\d0288452\016211-Design.dgn		DRAWN - MVT	REVISED -
PLOT SCALE = 100.4408' / in.		CHECKED - AWC	REVISED -
PLOT DATE = 3/23/2012		DATE - 2-29-12	REVISED -

STATE OF ILLINOIS
DEPARTMENT OF TRANSPORTATION

DEVON AVENUE AT ILL 94 (EDENS EXPRESSWAY)
PIER NO. 2 REPAIR
S.N. 016-0834

SCALE: SHEET 7 OF 9 SHEETS STA. TO STA.

F.A.I. RTE.	SECTION	COUNTY	TOTAL SHEETS	SHEET NO.
94	2011-066-I	COOK	18	10
CONTRACT NO. 60P85			ILLINOIS FED. AID PROJECT	



BILL OF MATERIALS

ITEM	UNIT	QUANTITY
STRUCTURAL REPAIR OF CONCRETE ≤ 5"	SO.FT.	245

LEGEND:

- STRUCTURAL REPAIR OF CONCRETE ≤ 5"
- CONCRETE REMOVAL AND CONCRETE SUPERSTRUCTURE

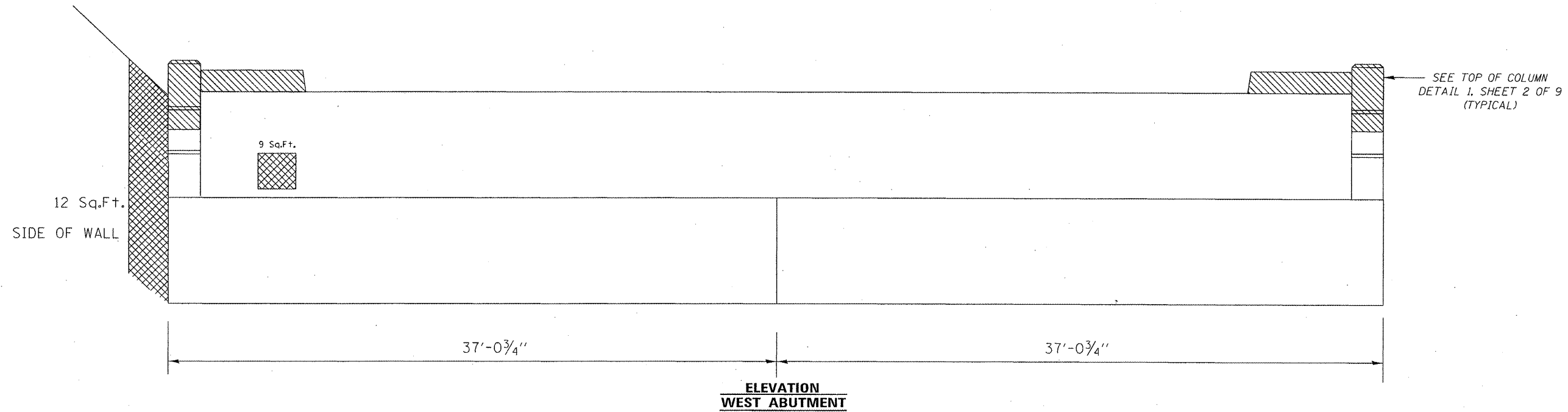
FILE NAME =	USER NAME = curryw	DESIGNED - MVT	REVISED -
es:\pw\work\p\ridot\curryw\02288452\DI622	11-Design.dgn	DRAWN - MVT	REVISED -
PLOT SCALE = 100,4408' / in.	CHECKED - AWC	DATE - 2-29-12	REVISED -
PLOT DATE = 3/23/2012			

**STATE OF ILLINOIS
DEPARTMENT OF TRANSPORTATION**

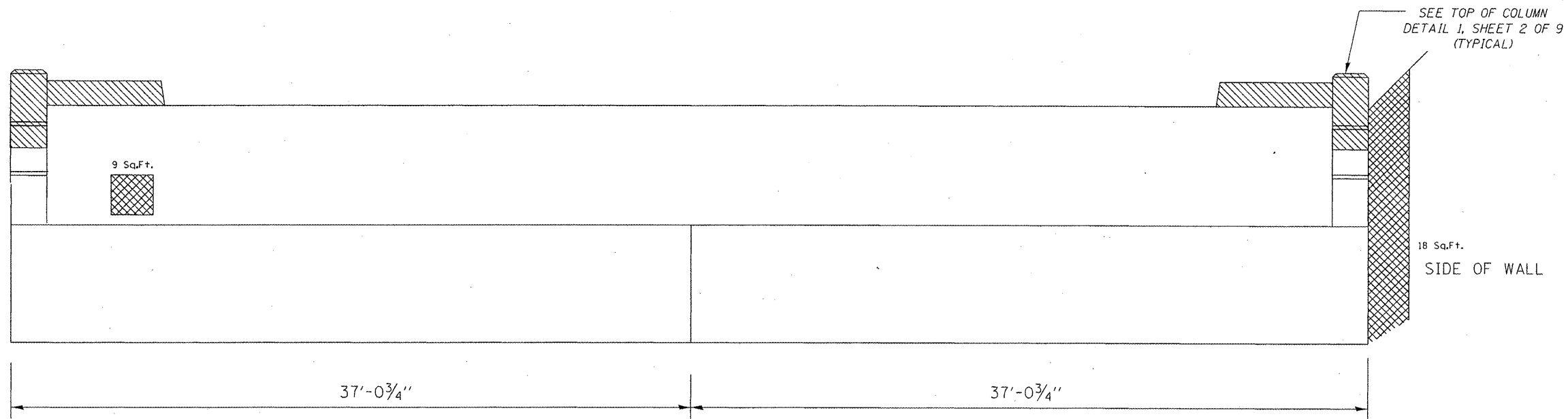
**DEVON AVENUE AT ILL 94 (EDENS EXPRESSWAY)
PIER NO. 3 REPAIR
S.N. 016-0834**

SCALE: SHEET 8 OF 9 SHEETS STA. TO STA.

F.A.I. RTE.	SECTION	COUNTY	TOTAL SHEETS	SHEET NO.
94	2011-066-1	COOK	18	11
CONTRACT NO. 60P85				
ILLINOIS FED. AID PROJECT				



**ELEVATION
WEST ABUTMENT**



**ELEVATION
EAST ABUTMENT**

BILL OF MATERIALS

ITEM	UNIT	QUANTITY
STRUCTURAL REPAIR OF CONCRETE > 5"	SQ.FT.	48

LEGEND:

- STRUCTURAL REPAIR OF CONCRETE > 5"
- CONCRETE REMOVAL AND CONCRETE SUPERSTRUCTURE

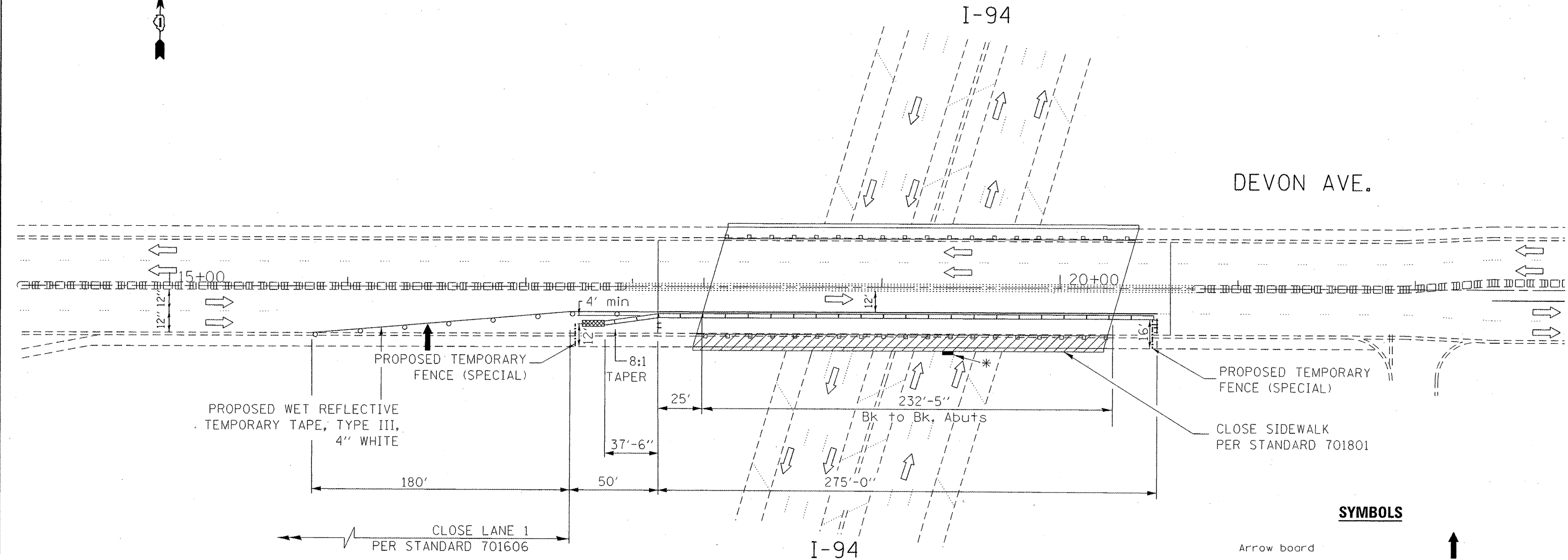
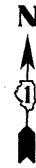
FILE NAME =	USER NAME = curryw	DESIGNED - MVT	REVISED -
c:\ps_work\pvidot\curryw\d0288452\0162	11-Design.dgn	DRAWN - MVT	REVISED -
PLOT SCALE = 100.4408	1/16"	CHECKED - AWC	REVISED -
PLOT DATE = 3/23/2012	DATE = 2-29-12	REVISED -	REVISED -

**STATE OF ILLINOIS
DEPARTMENT OF TRANSPORTATION**





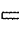
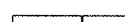


**DEVON AVENUE AT ILL 94 (EDENS EXPRESSWAY)
WEST AND EAST ABUTMENTS
S.N. 016-0834**

SCALE: SHEET 9 OF 9 SHEETS STA. TO STA.

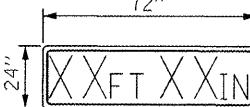
F.A.J. RTE.	SECTION	COUNTY	TOTAL SHEETS	SHEET NO.
94	2011-066-I	COOK	18	12
ILLINOIS FED. AID PROJECT			CONTRACT NO. 60P85	



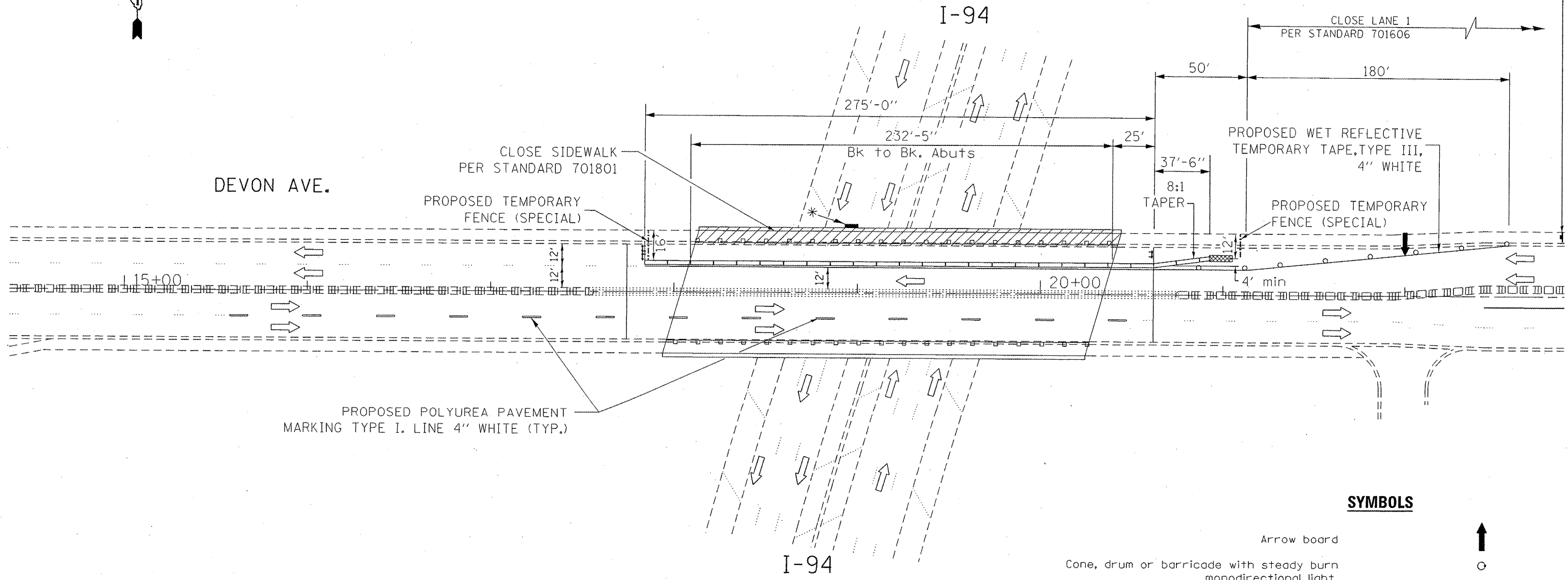
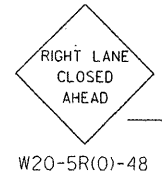
SYMBOLS

- Arrow board 
- Cone, drum or barricade with steady burn monodirectional light. 
- Work area 
- Type III barricade with Flashing Light 
- Direction of traffic 
- Temporary Concrete Barrier 
- Temp. Impact Attenuator 
- Sign Panel-Type 2 

NOTES

- *  W12-2a
Sign Panel-Type 2
Decal To Facia Beam
Elevation To Match Existing Sign

FILE NAME =	USER NAME = curryaw	DESIGNED -	REVISED -	STATE OF ILLINOIS DEPARTMENT OF TRANSPORTATION	TRAFFIC CONTROL AND PROTECTION STAGE I			F.A.I. RTE.	SECTION	COUNTY	TOTAL SHEETS	SHEET NO.
c:\pwwork\pwwork\curryaw\d0288452\016211-Design.dgn	DRAWN -	REVISED -	94					2011-066-1	COOK	18	13	
PLOT SCALE = 1/80.4488' / in.	CHECKED -	REVISED -	CONTRACT NO. 60P85									
PLOT DATE = 3/23/2012	DATE -	REVISED -	ILLINOIS FED. AID PROJECT									
				SCALE:	SHEET	OF	SHEETS	STA.	TO	STA.		

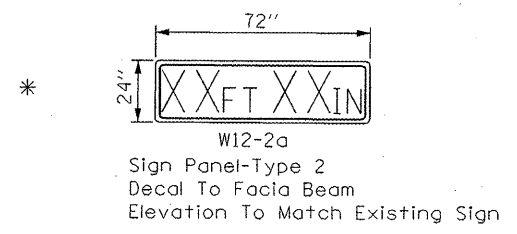


PROPOSED POLYUREA PAVEMENT MARKING TYPE I. LINE 4" WHITE (TYP.)

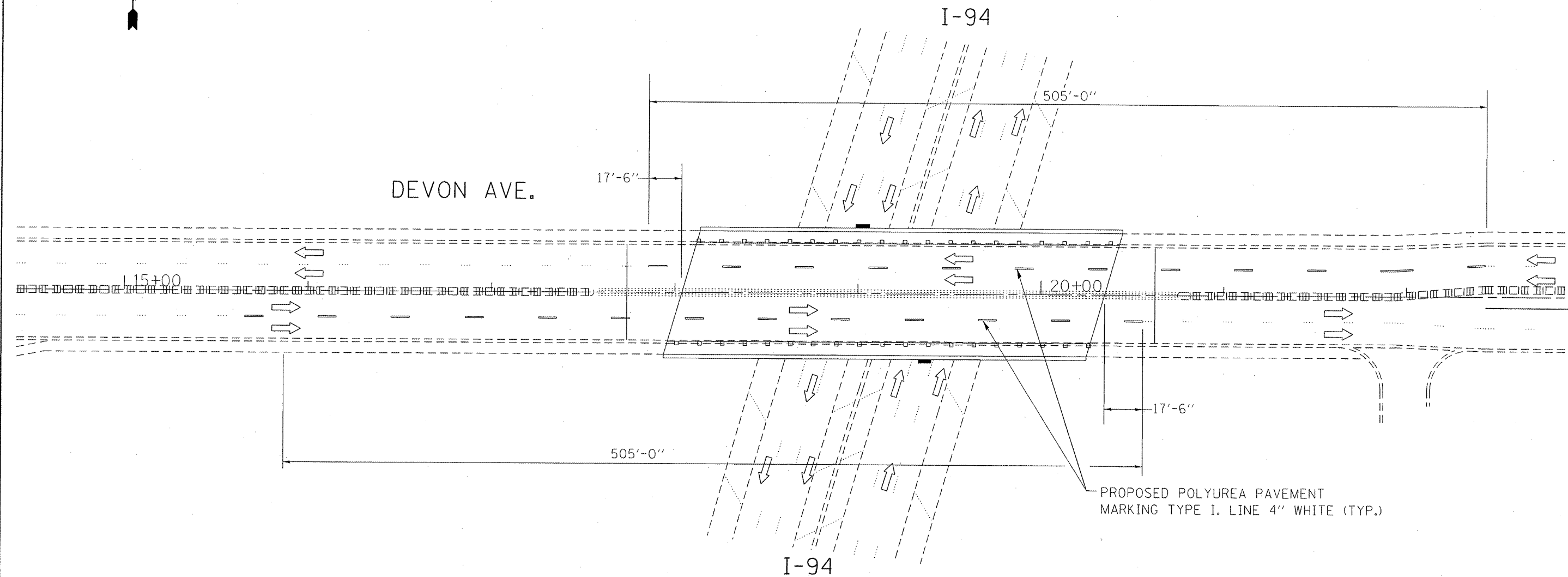
SYMBOLS

- ↑ Arrow board
- Cone, drum or barricade with steady burn monodirectional light.
- ▨ Work area
- ⊠ Type III barricade with Flashing Light
- ⇄ Direction of traffic
- ▬ Temporary Concrete Barrier
- ▩ Temp. Impact Attenuator
- ▬ Sign Panel-Type 2

NOTES



FILE NAME =	USER NAME = curryaw	DESIGNED -	REVISED -	STATE OF ILLINOIS DEPARTMENT OF TRANSPORTATION	TRAFFIC CONTROL AND PROTECTION STAGE II			F.A.I. RTE.	SECTION	COUNTY	TOTAL SHEETS	SHEET NO.
c:\pw_work\pwidot\curryaw\0288452\016211-Design.dgn		DRAWN -	REVISED -					94	2011-066-1	COOK	18	14
		PLOT SCALE = 100.4408' / in.	REVISED -		SCALE: SHEET OF SHEETS STA. TO STA.			CONTRACT NO. 60P85				
		PLOT DATE = 3/23/2012	REVISED -		ILLINOIS FED. AID PROJECT							



FILE NAME :	USER NAME :	DESIGNED :	REVISED :
cs:\pw_work\pwidot\curryw\08280452\016211-Design.dgn	curryw	-	-
		DRAWN :	REVISED :
		-	-
		CHECKED :	REVISED :
		-	-
		DATE :	REVISED :
		-	-

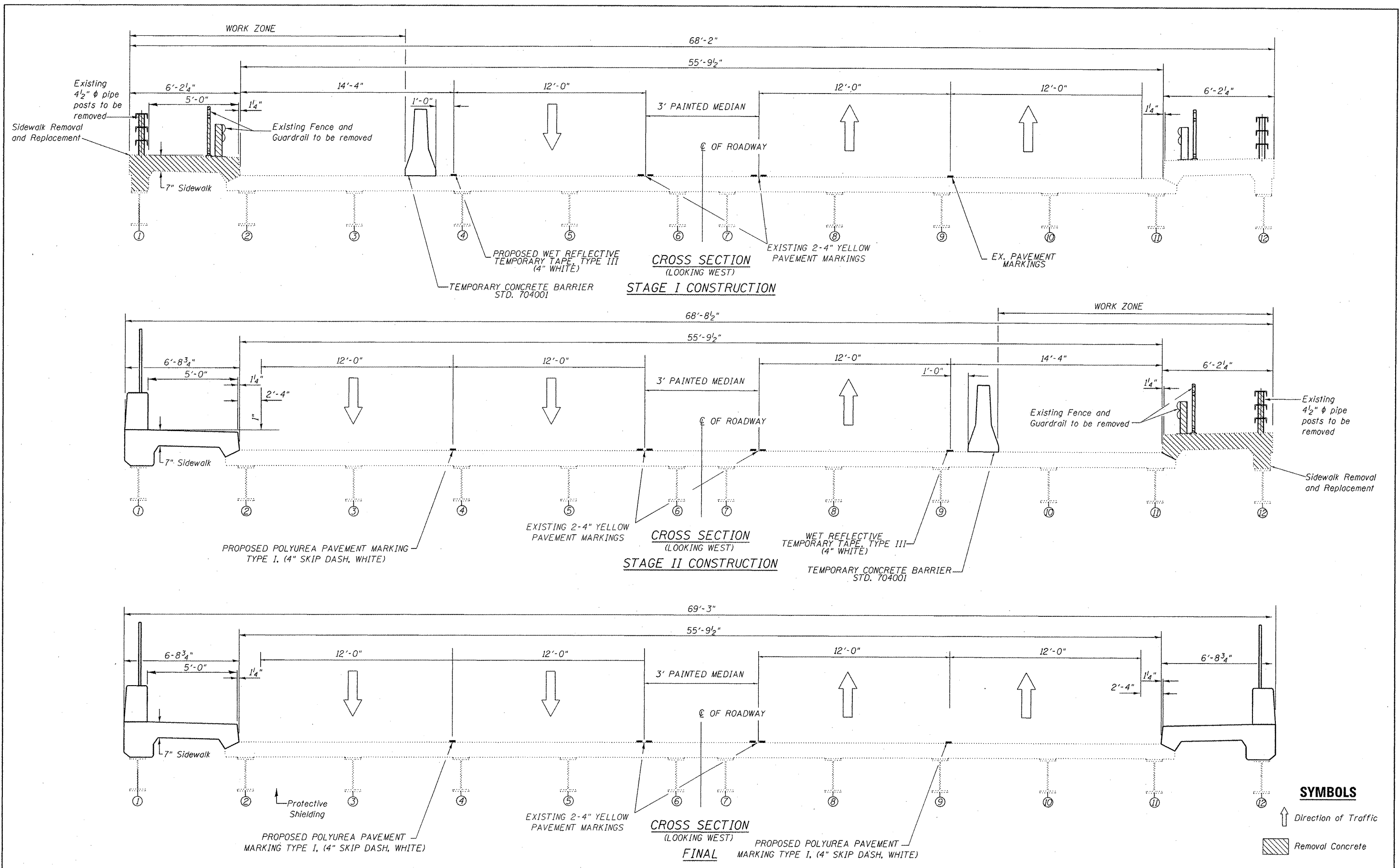
**STATE OF ILLINOIS
DEPARTMENT OF TRANSPORTATION**

**FAI 94(I-94/EDENS EXPWY) AT DEVON AVE.
PAVEMENT MARKING**

F.A.I. RTE.	SECTION	COUNTY	TOTAL SHEETS	SHEET NO.
94	2011-066-1	COOK	18	15
CONTRACT NO. 60P85				

SCALE:	SHEET	OF	SHEETS	STA.	TO STA.

ILLINOIS FED. AID PROJECT



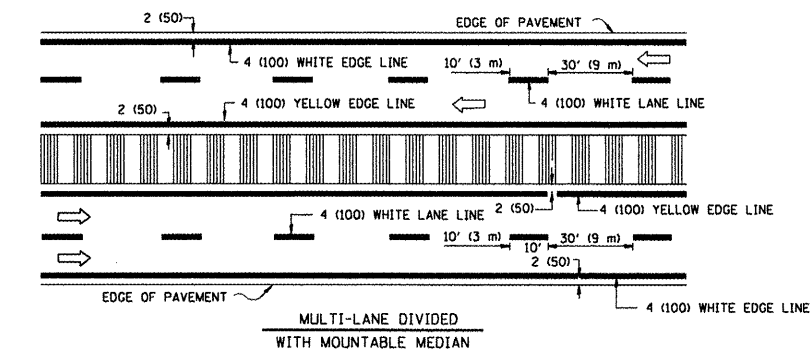
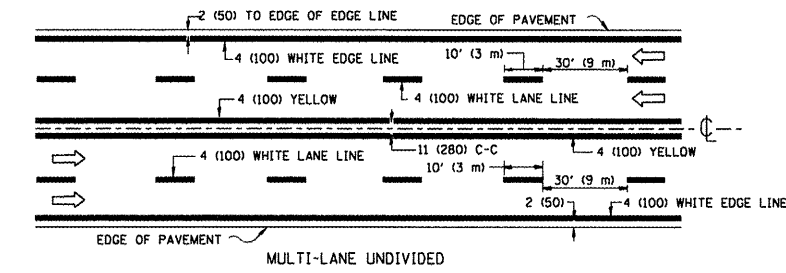
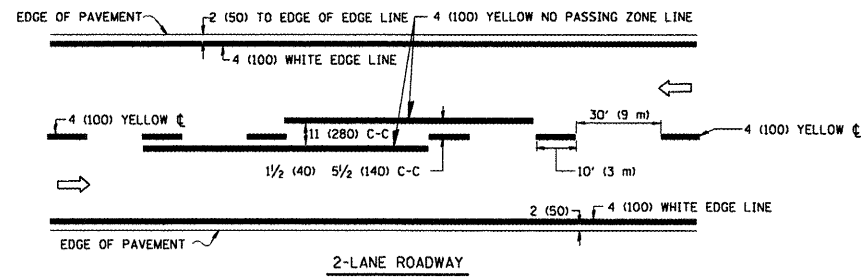
FILE NAME =	USER NAME = curryga	DESIGNED -	REVISED -
et:\pwwork\pwwork\curryga\d0288452\0162	11-Design.dgn	DRAWN -	REVISED -
PLOT SCALE = 100.4408' / in.		CHECKED -	REVISED -
PLOT DATE = 3/23/2012		DATE -	REVISED -

**STATE OF ILLINOIS
 DEPARTMENT OF TRANSPORTATION**

**FAI 94 (I-94) EDENS EXPWY AT DEVON AVE.
 TRAFFIC CONTROL TYPICAL SECTION**

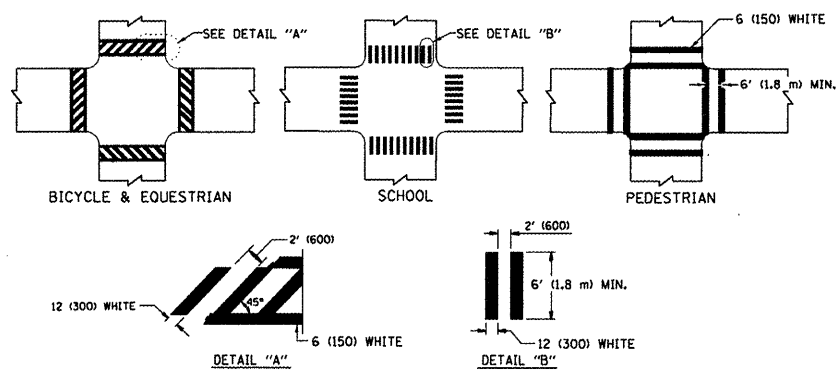
SCALE: SHEET OF SHEETS STA. TO STA.

F.A.I. RTE. 94	SECTION 2011-066-1	COUNTY COOK	TOTAL SHEETS 18	SHEET NO. 16
CONTRACT NO. 60P85				
ILLINOIS FED. AID PROJECT				

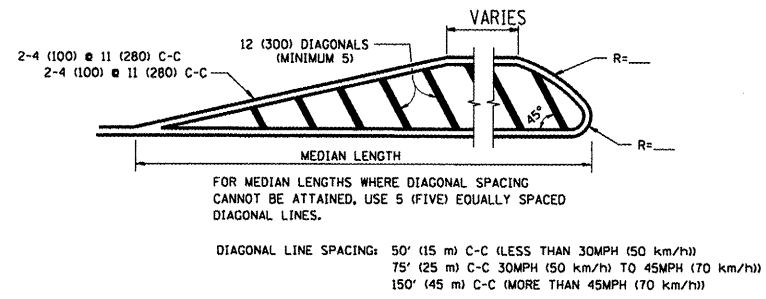
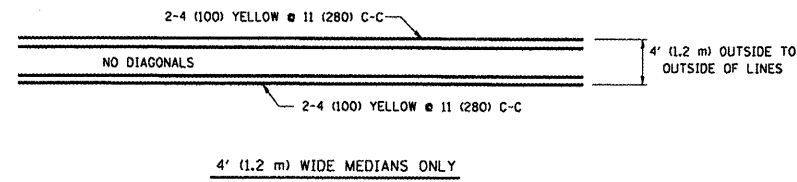


NOTE: MEDIANS WITH BARRIER CURB DO NOT REQUIRE AN EDGE LINE

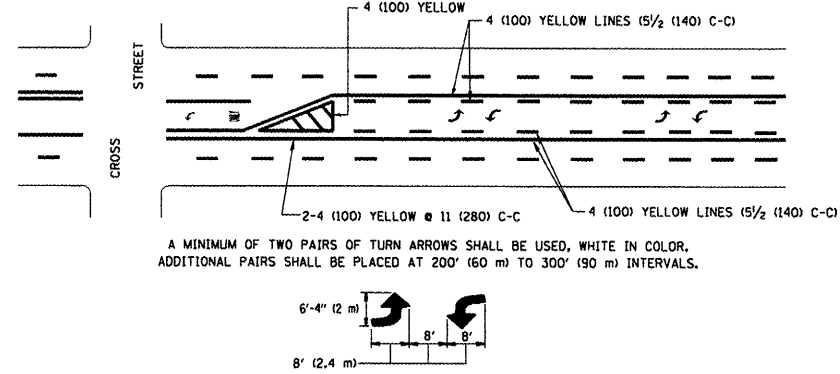
TYPICAL LANE AND EDGE LINE MARKING



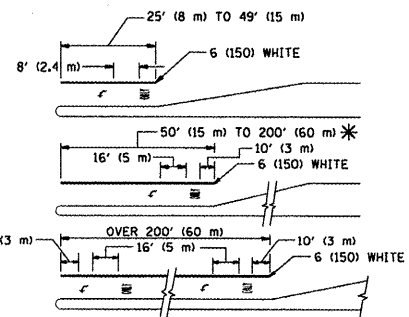
TYPICAL CROSSWALK MARKING



MEDIANS OVER 4' (1.2 m) WIDE



TYPICAL PAINTED MEDIAN MARKING

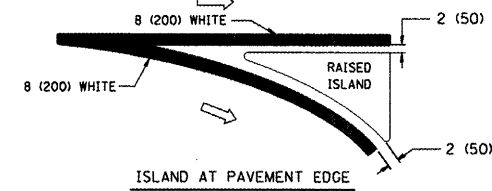
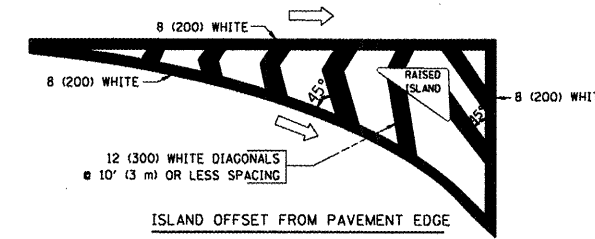


FULL SIZE LETTERS 8' (2.4 m) AND ARROWS SHALL BE USED.
AREA = 15.6 SQ. FT. (1.5 m²) AREA = 20.8 SQ. FT. (1.9 m²)

* TURN LANES IN EXCESS OF 400' (120 m) IN LENGTH MAY HAVE AN ADDITIONAL SET OF ARROW - "ONLY" INSTALLED MIDWAY BETWEEN THE OTHER TWO SETS OF ARROW - "ONLY".

TYPICAL LEFT (OR RIGHT) TURN LANE

TYPICAL TURN LANE MARKING



TYPICAL ISLAND MARKING

TYPE OF MARKING	WIDTH OF LINE	PATTERN	COLOR	SPACING / REMARKS
CENTERLINE ON 2 LANE PAVEMENT	4 (100)	SKIP-DASH	YELLOW	10' (3 m) LINE WITH 30' (9 m) SPACE
CENTERLINE ON MULTI-LANE UNDIVIDED PAVEMENT	2 @ 4 (100)	SOLID	YELLOW	11 (280) C-C
NO PASSING ZONE LINES FOR ONE DIRECTION	4 (100)	SOLID	YELLOW	5/2 (140) C-C FROM SKIP-DASH CENTERLINE
NO PASSING ZONE LINES FOR BOTH DIRECTIONS	2 @ 4 (100)	SOLID	YELLOW	11 (280) C-C OMIT SKIP-DASH CENTERLINE BETWEEN
LANE LINES	4 (100)	SKIP-DASH	WHITE	10' (3 m) LINE WITH 30' (9 m) SPACE
LANE LINES	5 (125) ON FREEWAYS	SKIP-DASH	WHITE	10' (3 m) LINE WITH 30' (9 m) SPACE
DOTTED LINES (EXTENSIONS OF CENTER, LANE OR TURN LANE MARKINGS)	SAME AS LINE BEING EXTENDED	SKIP-DASH	SAME AS LINE BEING EXTENDED	2' (600) LINE WITH 6' (1.8 m) SPACE
EDGE LINES	4 (100)	SOLID	YELLOW-LEFT WHITE-RIGHT	OUTLINE MOUNTABLE MEDIANS IN YELLOW; EDGE LINES ARE NOT USED NEXT TO BARRIER CURB
TURN LANE MARKINGS	6 (150) LINE; FULL SIZE LETTERS & SYMBOLS (8' (2.4m))	SOLID	WHITE	SEE TYPICAL TURN LANE MARKING DETAIL
TWO WAY LEFT TURN MARKING	2 @ 4 (100) EACH DIRECTION	SKIP-DASH AND SOLID IN PAIRS	YELLOW	10' (3 m) LINE WITH 30' (9 m) SPACE FOR SKIP-DASH; 5/2 (140) C-C BETWEEN SOLID LINE AND SKIP-DASH LINE
TWO WAY LEFT TURN MARKING	8' (2.4m) LEFT ARROW		WHITE	SEE TYPICAL TWO-WAY LEFT TURN MARKING DETAIL
CROSSWALK LINES (PEDESTRIAN)	2 @ 6 (150)	SOLID	WHITE	NOT LESS THAN 6' (1.8 m) APART
CROSSWALK LINES (BIKE & EQUESTRIAN)	12 (300) @ 45°	SOLID	WHITE	2' (600) APART
CROSSWALK LINES (LONGITUDINAL BARS (SCHOOL))	12 (300) @ 90°	SOLID	WHITE	SEE TYPICAL CROSSWALK MARKING DETAILS.
STOP LINES	24 (600)	SOLID	WHITE	PLACE 4' (1.2 m) IN ADVANCE OF AND PARALLEL TO CROSSWALK, IF PRESENT. OTHERWISE, PLACE AT DESIRED STOPPING POINT, PARALLEL TO CROSSROAD CENTERLINE, WHERE POSSIBLE
PAINTED MEDIANS	2 @ 4 (100) WITH 12 (300) DIAGONALS @ 45°	SOLID	YELLOW; TWO WAY TRAFFIC WHITE; ONE WAY TRAFFIC	11 (280) C-C FOR THE DOUBLE LINE SEE TYPICAL PAINTED MEDIAN MARKING.
CORE MARKING AND CHANNELIZING LINES	8 (200) WITH 12 (300) DIAGONALS @ 45°	SOLID	WHITE	DIAGONALS: 15' (4.5 m) C-C (LESS THAN 30MPH (50 km/h)) 20' (6 m) C-C (30MPH (50 km/h) TO 45MPH (70 km/h)) 30' (9 m) C-C (OVER 45MPH (70 km/h))
RAILROAD CROSSING	24 (600) TRANSVERSE LINES; "RR" 15' (4.5 m) LINE FOR "X"	SOLID	WHITE	SEE STATE STANDARD 780001 AREA OF: "R"=3.6 SQ. FT. (0.33 m ²) EACH "X"=54.0 SQ. FT. (5.0 m ²)
SHOULDER DIAGONALS	12 (300) @ 45°	SOLID	WHITE - RIGHT YELLOW - LEFT	50' (15 m) C-C (LESS THAN 30MPH (50 km/h)) 75' (25 m) C-C (30 MPH (50 km/h) TO 45MPH (70 km/h)) 150' (45 m) C-C (OVER 45MPH (70 km/h))

FOR FURTHER DETAILS ON PAVEMENT MARKING REFER TO STANDARD SPECIFICATIONS FOR ROAD AND BRIDGE CONSTRUCTION AND STATE STANDARD 780001.

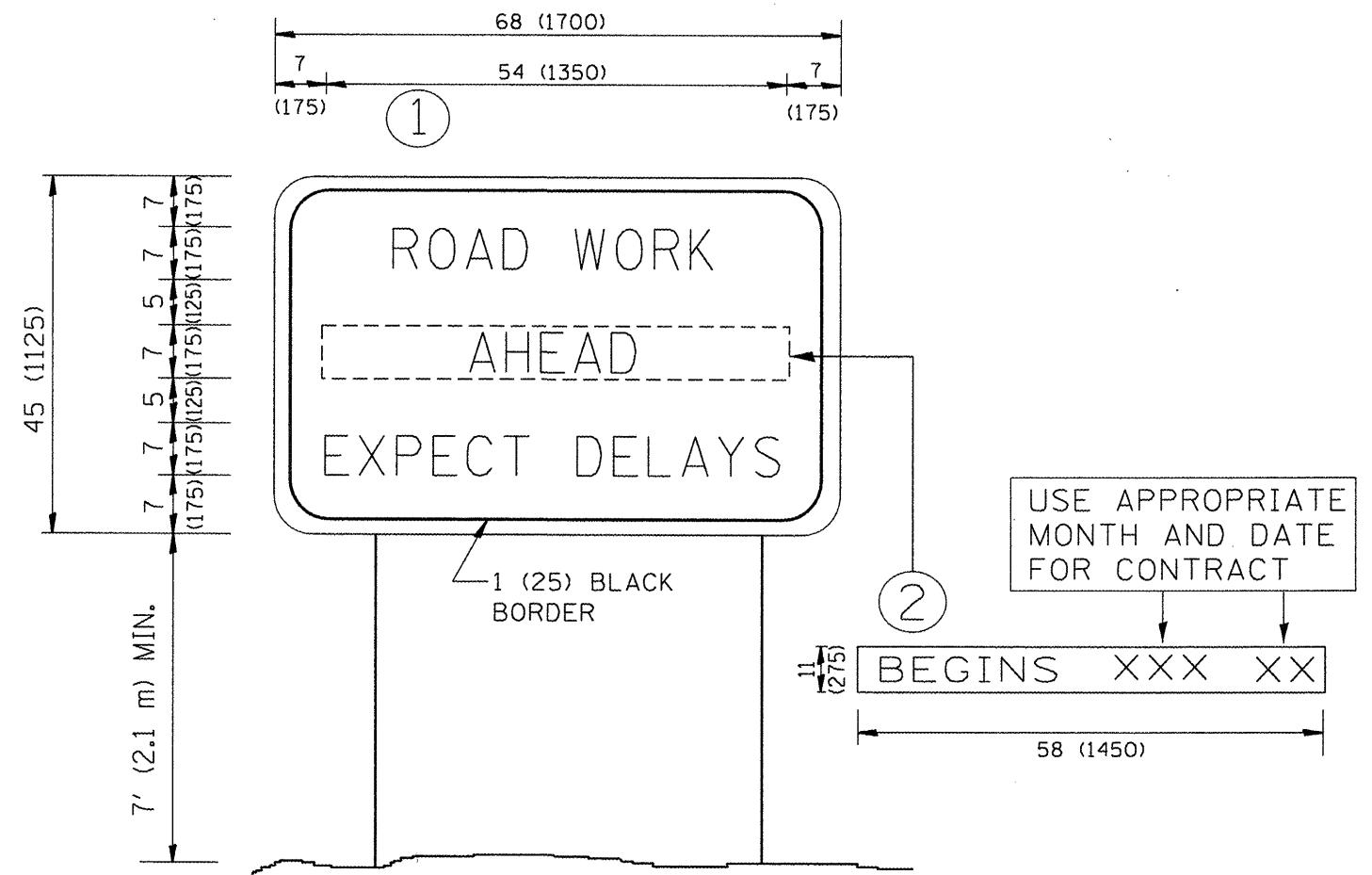
All dimensions are in inches (millimeters) unless otherwise shown.

FILE NAME =	USER NAME = curryw	DESIGNED - EVERS	REVISED - T. RAMMACHER 10-27-94
c:\pwork\pedit\curryw\d0288452\d1std.dgn		DRAWN -	REVISED - C. JUCIUS 09-09-09
	PLT SCALE = 100.0000 / in.	CHECKED -	REVISED -
	PLT DATE = 3/15/2012	DATE - 03-19-90	REVISED -

STATE OF ILLINOIS
DEPARTMENT OF TRANSPORTATION

DISTRICT ONE		F.A.I. RTE.	SECTION	COUNTY	TOTAL SHEETS	SHEET NO.
TYPICAL PAVEMENT MARKINGS		94	2011-066-1	COOK	18	17
SCALE: NONE		SHEET NO. 1 OF 1 SHEETS		STA.	TO STA.	

TC-13		CONTRACT NO. 60P85	
FED. ROAD DIST. NO. 1 ILLINOIS FED. AID PROJECT			



NOTES:

1. USE BLACK LETTERING ON ORANGE BACKGROUND.
2. ERECT SIGNS IN ADVANCE OF THE LOCATION FOR THE "ROAD CONSTRUCTION AHEAD" SIGN AT LOCATIONS AS DIRECTED BY THE ENGINEER.
3. ERECT SIGN ① WITH INSTALLED PANEL ② ONE WEEK PRIOR TO THE START OF CONSTRUCTION.
4. REMOVE PANEL ② SOON AFTER THE START OF CONSTRUCTION.
5. SEE SPECIAL PROVISION FOR "TEMPORARY INFORMATION SIGNING" FOR ADDITIONAL INFORMATION.
6. ONE SIGN ASSEMBLY EQUALS 25.70 SQ. FT. (2.3 SQ. M.)
7. SHALL BE PAID FOR AS TEMPORARY INFORMATION SIGNING.

ALL DIMENSIONS ARE IN INCHES (MILLIMETERS) UNLESS OTHERWISE SHOWN.

FILE NAME =	USER NAME = curryw	DESIGNED -	REVISED - R. MIRS 09-15-97
c:\pwork\pwork\curryw\d8288452\d1st.dgn		DRAWN -	REVISED - R. MIRS 12-11-97
	PLDT SCALE = 100.0000 / / in.	CHECKED -	REVISED - T. RAMMACHER 02-02-99
	PLDT DATE = 3/15/2012	DATE -	REVISED - C. JUCIUS 01-31-07

**STATE OF ILLINOIS
DEPARTMENT OF TRANSPORTATION**

ARTERIAL ROAD INFORMATION SIGN		F.A.I. RTE.	SECTION	COUNTY	TOTAL SHEETS	SHEET NO.
SCALE: NONE	SHEET NO. 1 OF 1 SHEETS	94	2011-066-1	COOK	18	18
STA.	TO STA.	TC-22		CONTRACT NO. 60P85		
FED. ROAD DIST. NO. 1 ILLINOIS FED. AID PROJECT						