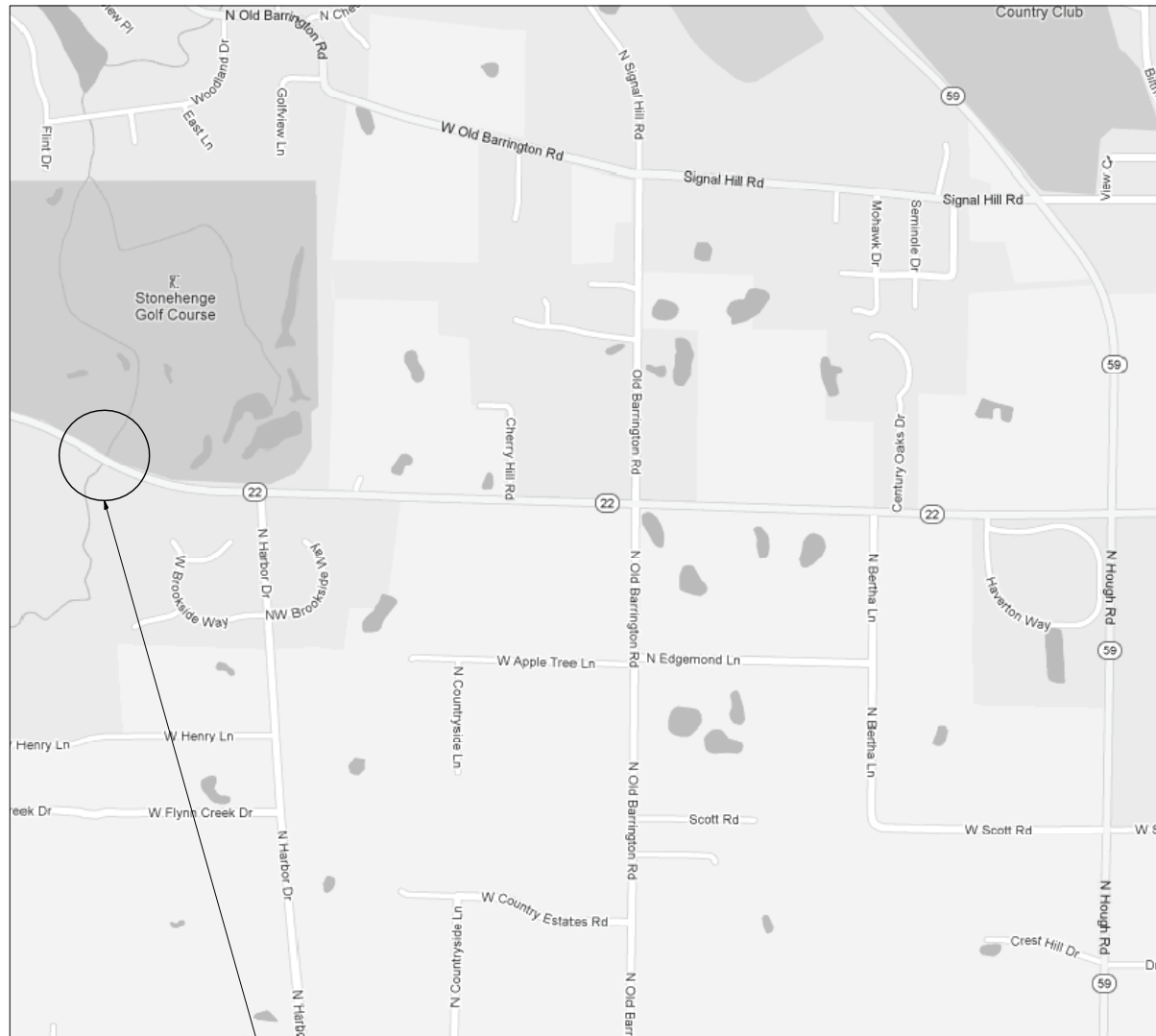


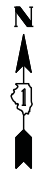
TRAFFIC DATA
SPEED LIMIT = 50 MPH
2009 ADT = 11,500

R. 9 E.

T. 43 N.



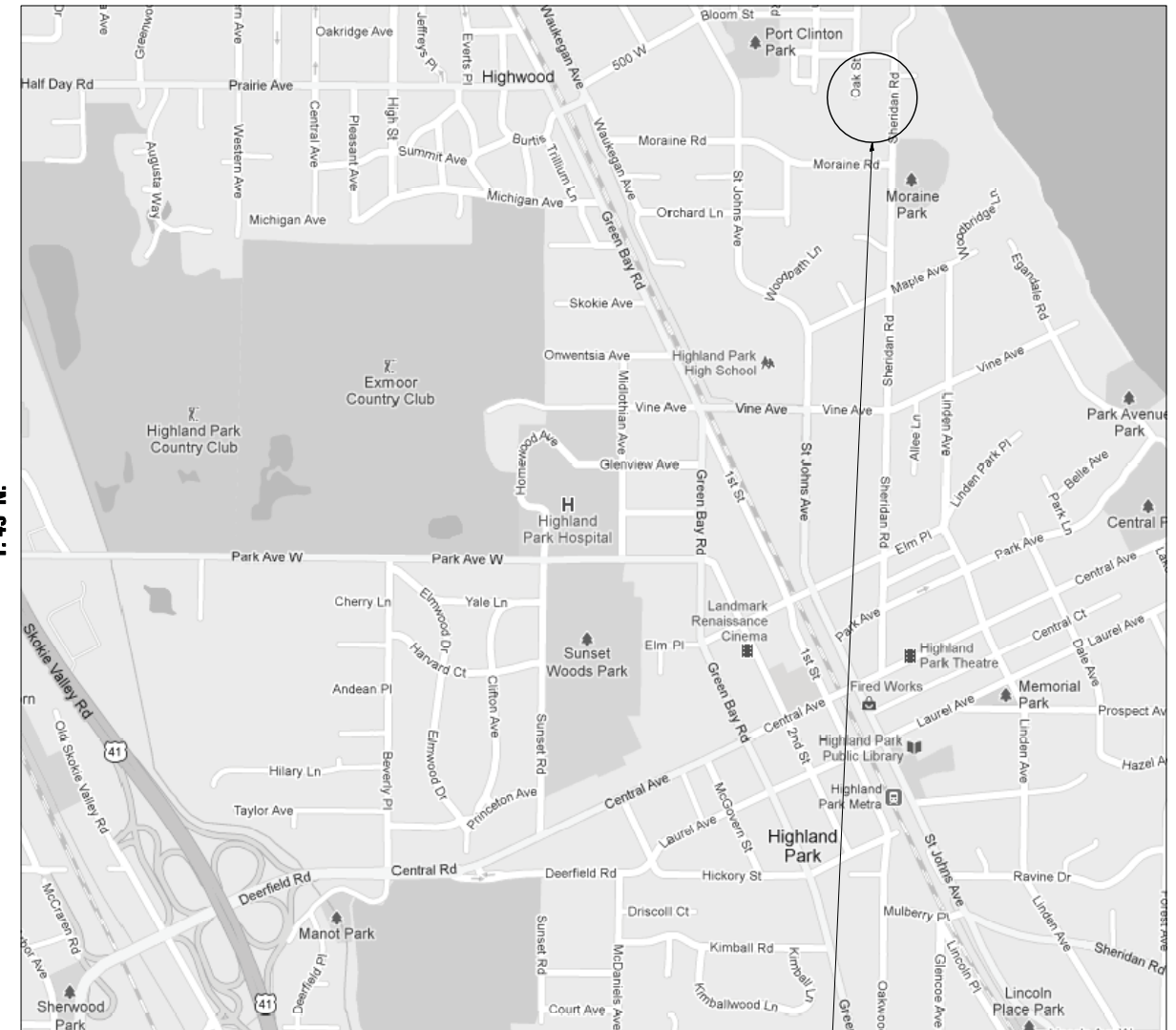
LOCATION 1 - LAKE COUNTY
STRUCTURE NUMBER: 049-0079
ILLINOIS ROUTE 22 OVER FLINT CREEK
LOCATED IN CUBA TOWNSHIP
VILLAGE OF LAKE BARRINGTON



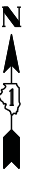
TRAFFIC DATA
SPEED LIMIT = 30 MPH
2007 ADT = 2,450

R. 12 E.

T. 43 N.



LOCATION 2 - LAKE COUNTY
STRUCTURE NUMBER: 049-0081
SHERIDAN ROAD OVER BOYINGTON RAVINE
LOCATED IN DEERFIELD TOWNSHIP
CITY OF HIGHLAND PARK



COMPANY NAME: HRGreen
 PROJECT CONTACT: S. PERNAL
 DATE PLOTTED: 2/14/2012 8:50:25 PM
 FILE NAME: 86100196.19-IL22_SHER-location.dgn
 PLOT DRIVER: pdfcut
 PEN TABLE: standard-trans.tbl



USER NAME = SPernal	DESIGNED - C. HARTKE	REVISED -
PLOT SCALE = N/A	DRAWN - S. PERNAL	REVISED -
PLOT DATE = 2/14/2012	CHECKED - T. HAMILTON	REVISED -
	DATE - 2/14/12	REVISED -

STATE OF ILLINOIS
DEPARTMENT OF TRANSPORTATION

LOCATION MAP
SCOUR COUNTERMEASURES

SCALE: N/A SHEET NO. 1 OF 1 SHEETS STA. TO STA.

F.A. RTE.	SECTION	COUNTY	TOTAL SHEETS	SHEET NO.
VAR.	2011-222-1	LAKE	16	4
FED. ROAD DIST. NO.		ILLINOIS FED. AID PROJECT	CONTRACT NO. 60R83	