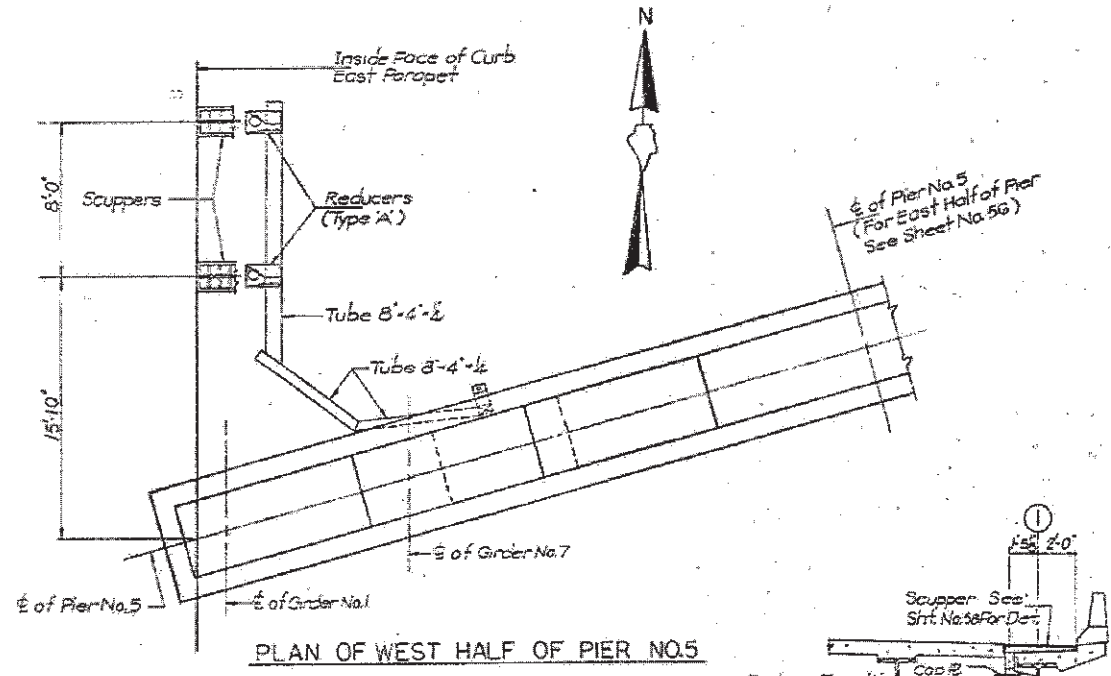
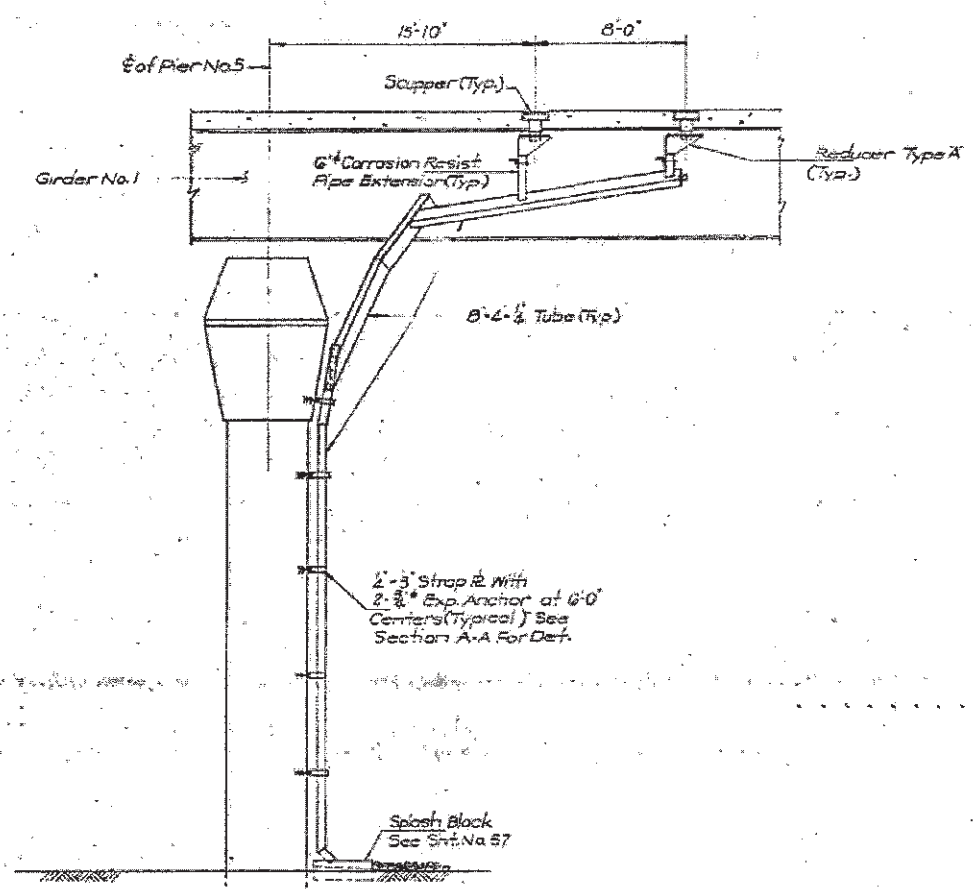


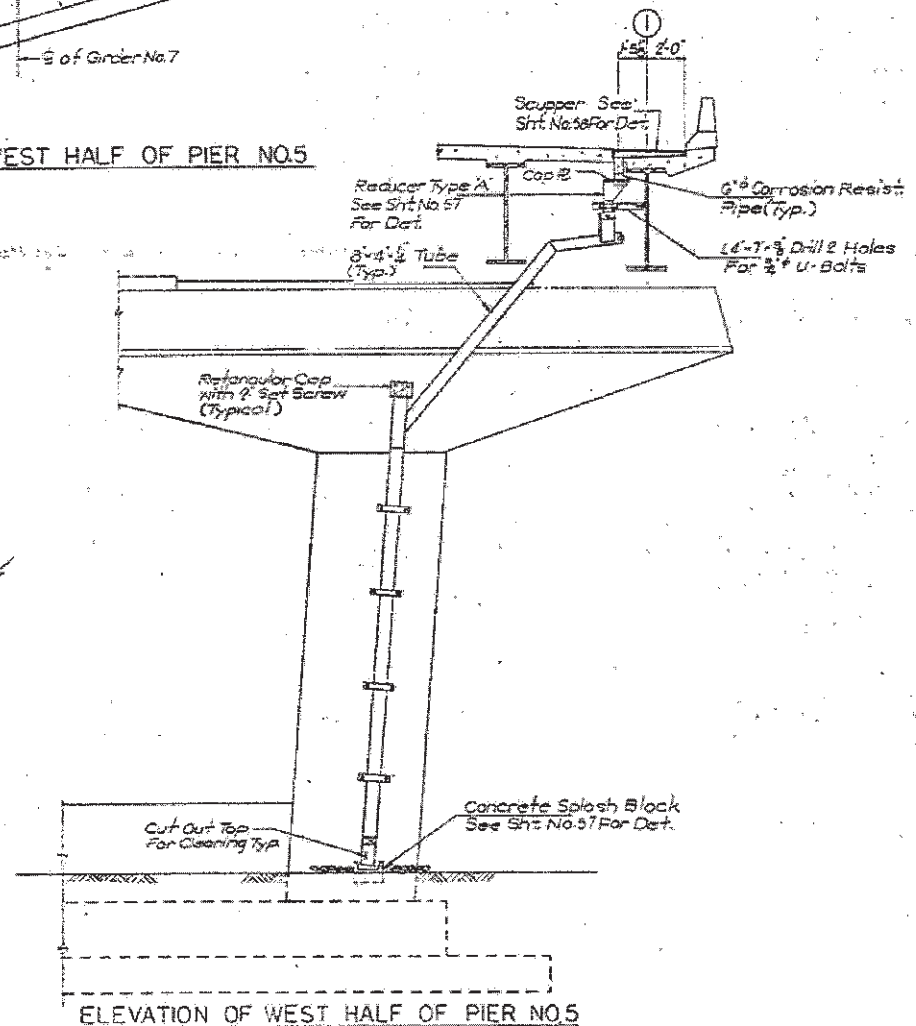
FOR INFORMATION ONLY



PLAN OF WEST HALF OF PIER NO.5



SECTION OF PIER NO. 5
(LOOKING WEST)



ELEVATION OF WEST HALF OF PIER NO.5

NOTES:

1. For actual location of Drainage See Superstructure Plans.
2. For Drainage Details See Sht. No. 58.
3. Scuppers and Grates shall be ductile Iron Castings. Pipes, downspouts, including Specials and accessories shall be Corrosion Resistant Steel. See Special Provision.
4. Furnishing and Erecting of Scuppers and Deck Drainage will be paid for at a Lump Sum Price for Deck Drainage System.
5. See Sht. No. 54 For Sect. A-A.

BRIDGE DECK DRAINAGE DETAILS

*1) FAU 2612
2) FAP 330

FILE NAME =	USER NAME = curryaw	DESIGNED -	REVISED -	STATE OF ILLINOIS DEPARTMENT OF TRANSPORTATION	DRAINAGE REPAIRS (SN 016-2504)	F.A. RTE.	SECTION	COUNTY	TOTAL SHEETS	SHEET NO.
m:\pwork\pwork\curryaw\d0296919\013232-Design\ddg	DRAWN -	REVISED -	*			2012-001-1	COOK	27	14	
PLOT SCALE = 1/8" = 1'-0"	CHECKED -	REVISED -	CONTRACT NO. 60T31							
PLOT DATE = 3/2/2012	DATE -	REVISED -	ILLINOIS FED. AID PROJECT							
				SCALE:	SHEET 9 OF 13 SHEETS	STA.	TO STA.			