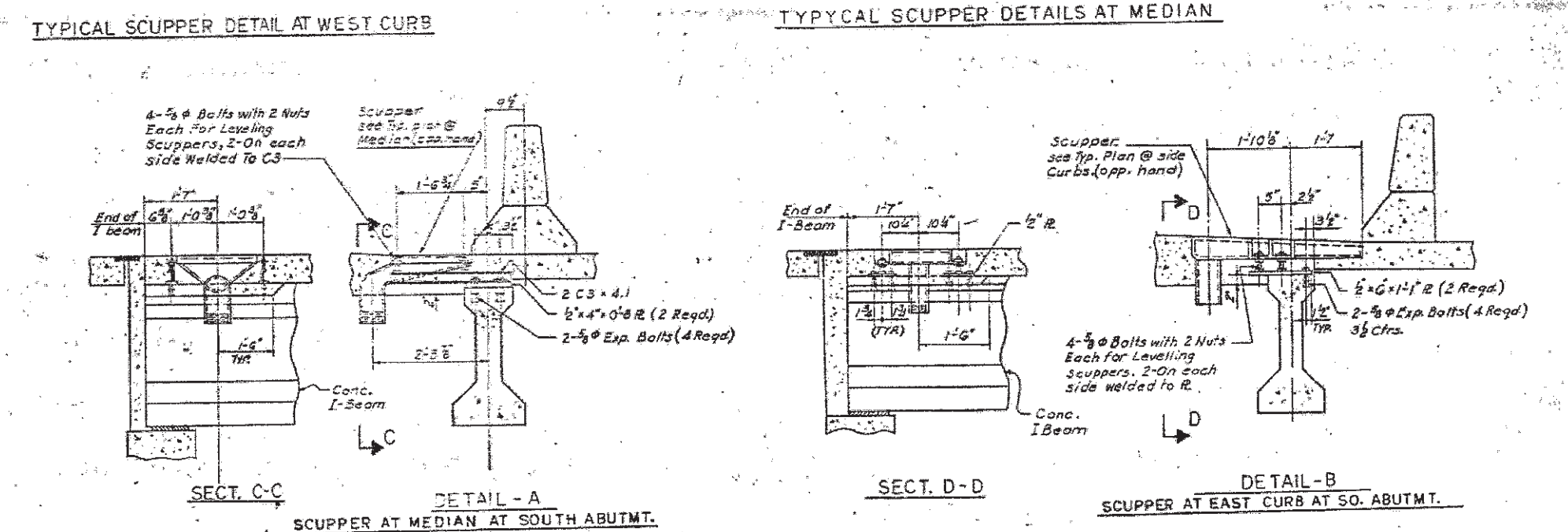
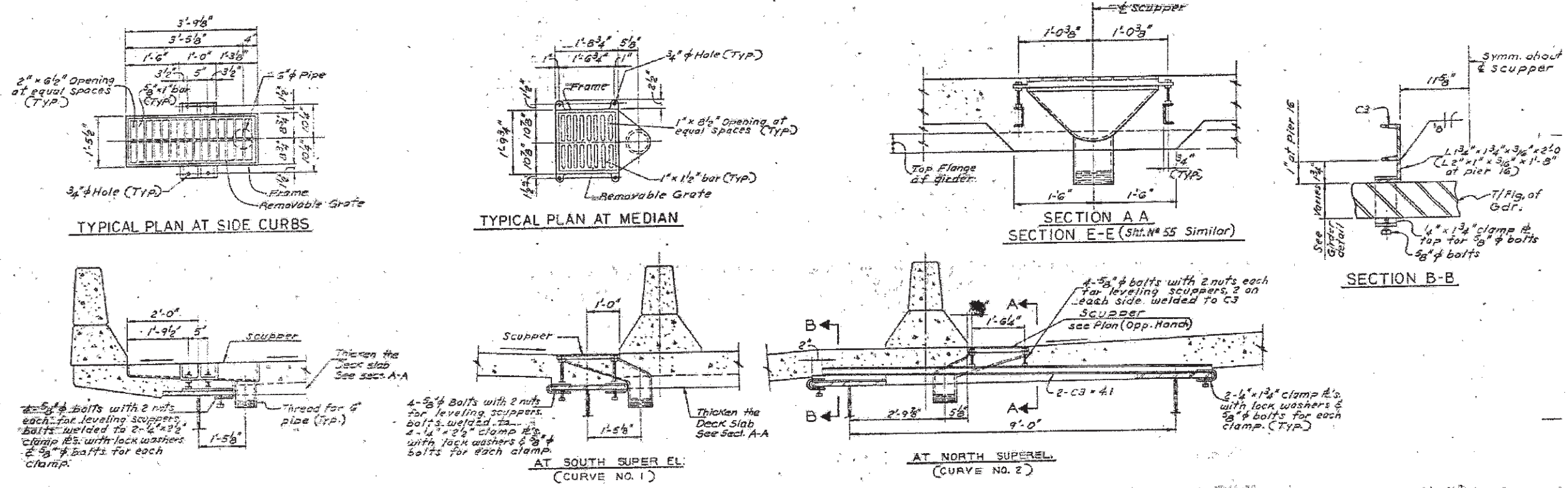


# FOR INFORMATION ONLY



- NOTES:**
- 1) For further Deck Drainage Dets. see Sht. #52 thru 59
  - 2) For reinforcement Dets. @ Scuppers see Sht. #42
  - 3) Scuppers and grate shall be ductile iron Castings. Pipes, downspouts including specials and accessories shall be corrosion resistant steel see special provisions.
  - 4) Furnishing and installing of Scuppers and Deck drainage will be paid for at the lump sum price for DECK DRAINAGE SYSTEM.

## BRIDGE DECK DRAINAGE DETAILS

\*1) FAU 2612  
 2) FAP 330

FILE NAME =	USER NAME = curryw	DESIGNED -	REVISED -	STATE OF ILLINOIS DEPARTMENT OF TRANSPORTATION	DRAINAGE REPAIRS (SN 016-2504)	F.A. RTE.	SECTION	COUNTY	TOTAL SHEETS	SHEET NO.	
at:\pwork\pwork\curryw\d2276919\DI3232-Design.dgn	2-Design.dgn	DRAWN -	REVISED -			*	2012-001-1	COOK	27	17	
PLOT SCALE = 100.0000' / in.		CHECKED -	REVISED -			SCALE: SHEET 12 OF 13 SHEETS STA. TO STA.		CONTRACT NO. 60T31			
PLOT DATE = 3/2/2012		DATE -	REVISED -			ILLINOIS FED. AID PROJECT					