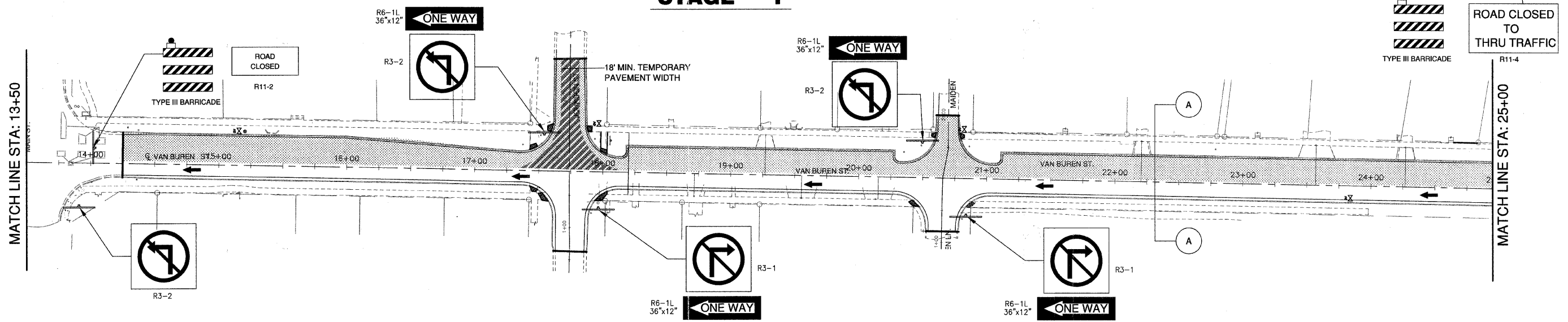
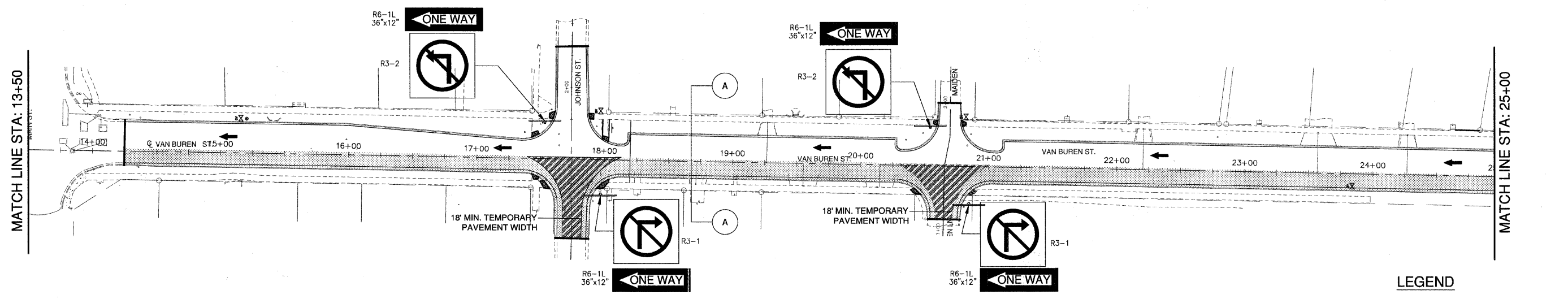


**STAGE 1**



**STAGE 2-A**



**STAGE 2-B**

**LEGEND**

PROPOSED STAGE CONSTRUCTION AREA

TEMPORARY PAVEMENT

FILE NAME: xxx	DESIGNED: EBW DRAWN: PC CHECKED: JQH DATE: AUGUST 25, 2010	USER NAME: GERALD L. HEINZ & ASSOCIATES, INC. CONSULTING ENGINEERS & LAND SURVEYORS 206 NORTH RIVER STREET EAST DUNDEE, ILLINOIS 60118	REVISIONS: MARCH 23, 2011 MAY 16, 2011	STATE OF ILLINOIS DEPARTMENT OF TRANSPORTATION	STAGE CONSTRUCTION	ROUTE: 252B SECTION: 04-00043-00-PV COUNTY: KANE TOTAL SHEETS: 85 SHEET NO.: 25 CONTRACT NO.: 63507
-------------------	---	--	--	---	--------------------	--

SCALE: 1" = 20'    SHEET NO. 2 OF 4 SHEETS    STA:    TO STA:    FED. ROAD DIST. NO.    ILLINOIS    FED. AID. PROJECT