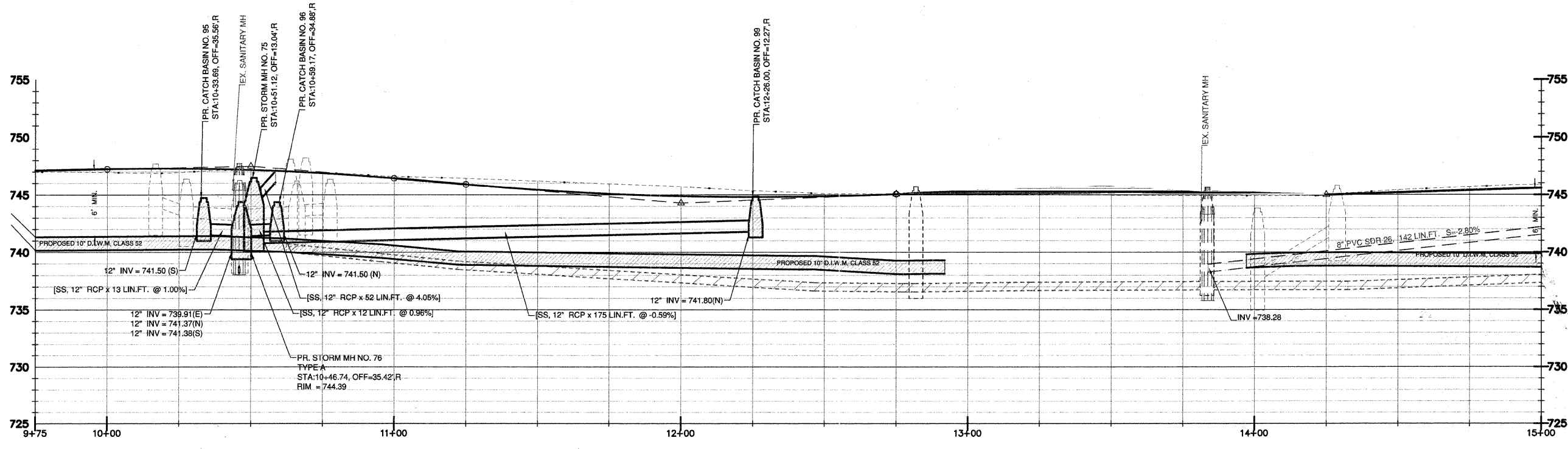


PIPE CROSSINGS		
NO.	DESCRIPTION	ELEV.
1	BOTTOM OF STORM SEWER TOP OF SANITARY SEWER	747.4 741.0
2	TOP OF SANITARY SEWER BOTTOM OF WATER MAIN	739.5 741.0 (MIN)
3	BOTTOM OF STORM SEWER TOP OF WATER MAIN	744.9 743.4 (MAX)
4	BOTTOM OF STORM SEWER TOP OF WATER MAIN	742.8 741.3 (MAX)
5	BOTTOM OF STORM SEWER TOP OF SANITARY SEWER	740.2 737.2

* WATERMAIN IS TO BE ENCASED WITH WATER QUALITY PIPE 10' ON EITHER SIDE OF CROSSING

NOTE: UTILITY POLES SHOWN TO BE MOVED (M) ARE TO BE RELOCATED BY OTHERS.



747.01	747.12	746.95	747.25	746.95	747.29	747.20	747.17	746.89	746.88	746.58	746.43	746.42	745.90	746.18	745.43	745.95	745.10	745.70	744.89	745.35	744.82	745.11	744.88	745.07	745.07	745.04	745.15	745.00	745.23	744.96	745.32	744.93	745.21	744.92	745.10	744.99	744.89	745.41	745.19	745.68	745.38	745.86	745.68
--------	--------	--------	--------	--------	--------	--------	--------	--------	--------	--------	--------	--------	--------	--------	--------	--------	--------	--------	--------	--------	--------	--------	--------	--------	--------	--------	--------	--------	--------	--------	--------	--------	--------	--------	--------	--------	--------	--------	--------	--------	--------	--------	--------