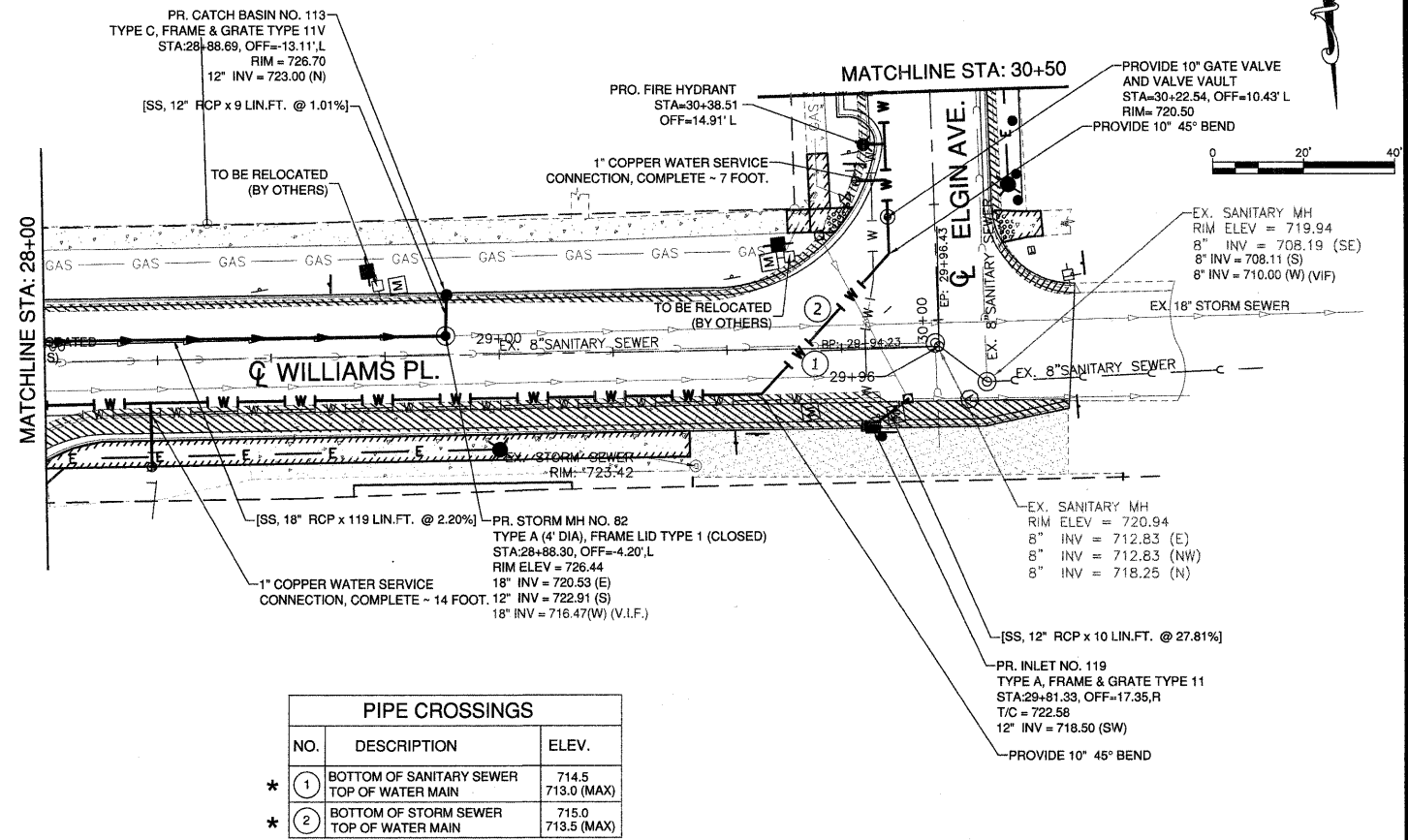
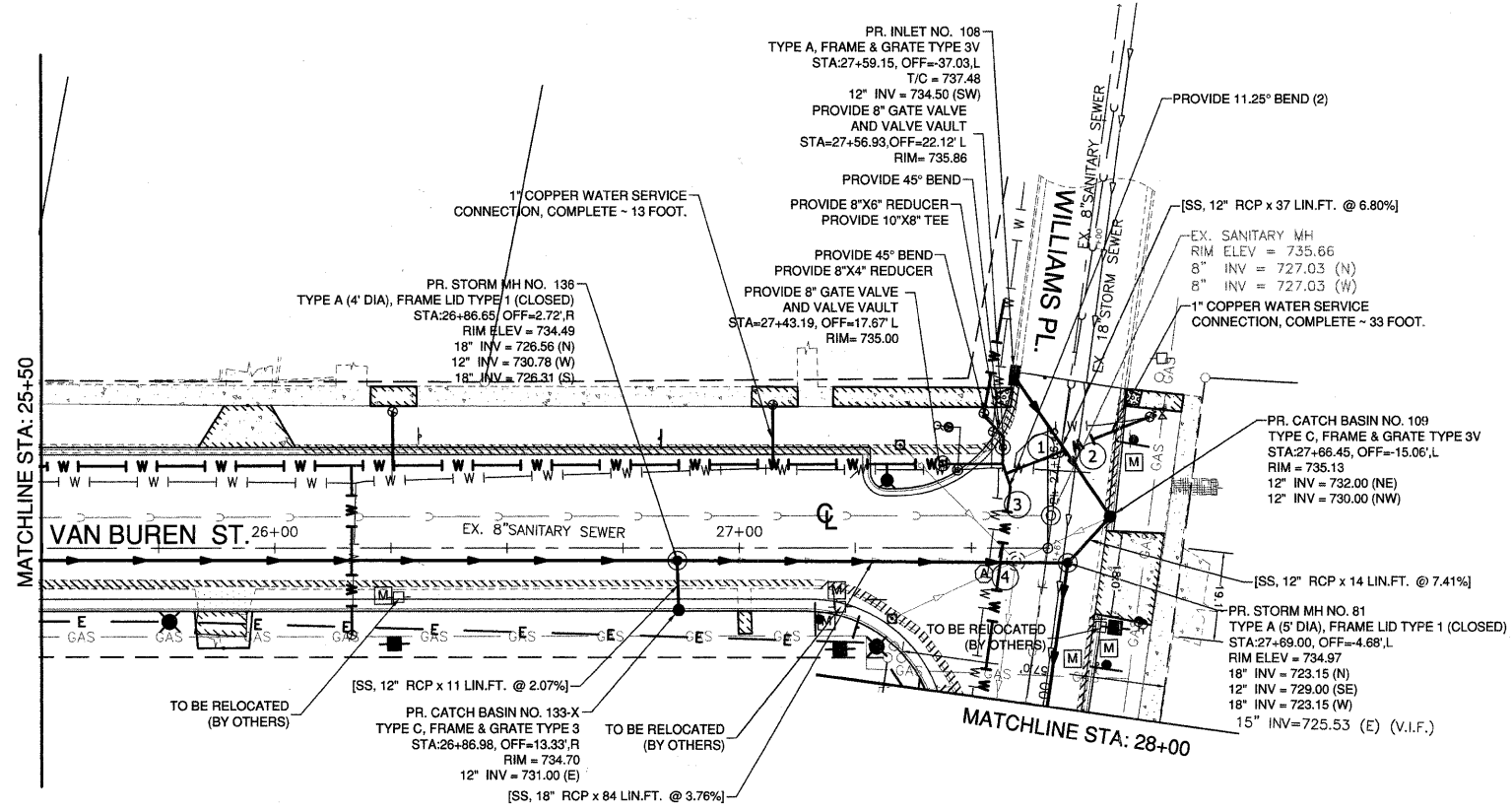


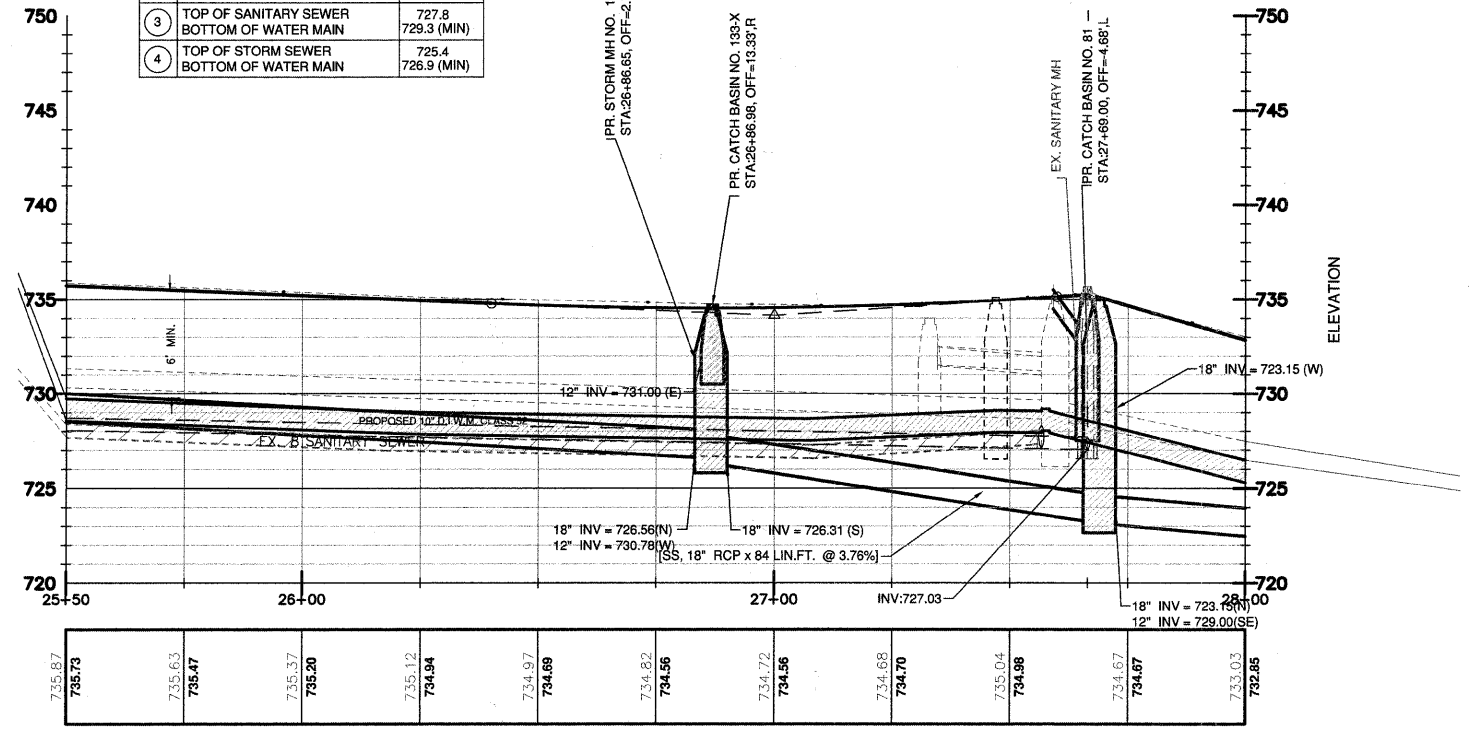
MATCHLINE STA: 25+50



| PIPE CROSSINGS |   |                      |
|----------------|---|----------------------|
| NO.            | DESCRIPTION                                   | ELEV.                |
| * ①            | BOTTOM OF SANITARY SEWER<br>TOP OF WATER MAIN | 714.5<br>713.0 (MAX) |
| * ②            | BOTTOM OF STORM SEWER<br>TOP OF WATER MAIN    | 715.0<br>713.5 (MAX) |

\* WATERMAIN IS TO BE ENCASED WITH WATER QUALITY PIPE 10' ON EITHER SIDE OF CROSSING

| PIPE CROSSINGS |   |                      |
|----------------|---|----------------------|
| NO.            | DESCRIPTION   | ELEV.                |
| ①              | TOP OF SANITARY SEWER<br>BOTTOM OF STORM SEWER        | 728.3<br>733.1       |
| ②              | TOP OF STORM SEWER, 18"<br>BOTTOM OF STORM SEWER, 12" | 728.0<br>732.7       |
| ③              | TOP OF SANITARY SEWER<br>BOTTOM OF WATER MAIN         | 727.8<br>729.3 (MIN) |
| ④              | TOP OF STORM SEWER<br>BOTTOM OF WATER MAIN            | 725.4<br>726.9 (MIN) |



NOTE: UTILITY POLES SHOWN TO BE MOVED (M) ARE TO BE RELOCATED BY OTHERS.

