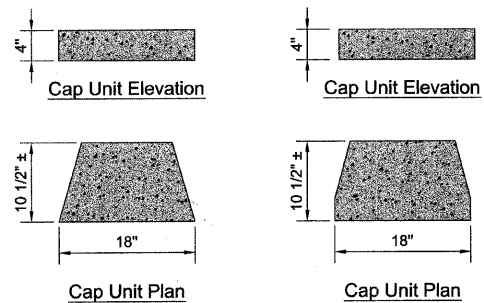


Geogrid is to be Placed on Level Backfill and Extended Over the Fiberglass Pins. Place Next Unit. Pull Grid Taught and Backfill. Stake as required.

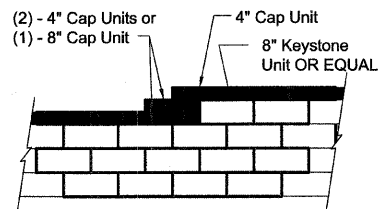
**Grid & Pin Connection**

**Standard Unit**



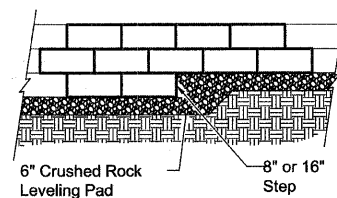
**Universal Cap Unit Option**

**Straight Split Cap Unit Option**



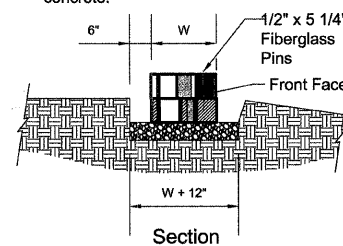
**Note:**  
1. Secure all cap units with Keystone Kapseal or equal.

**Top of Wall Steps**

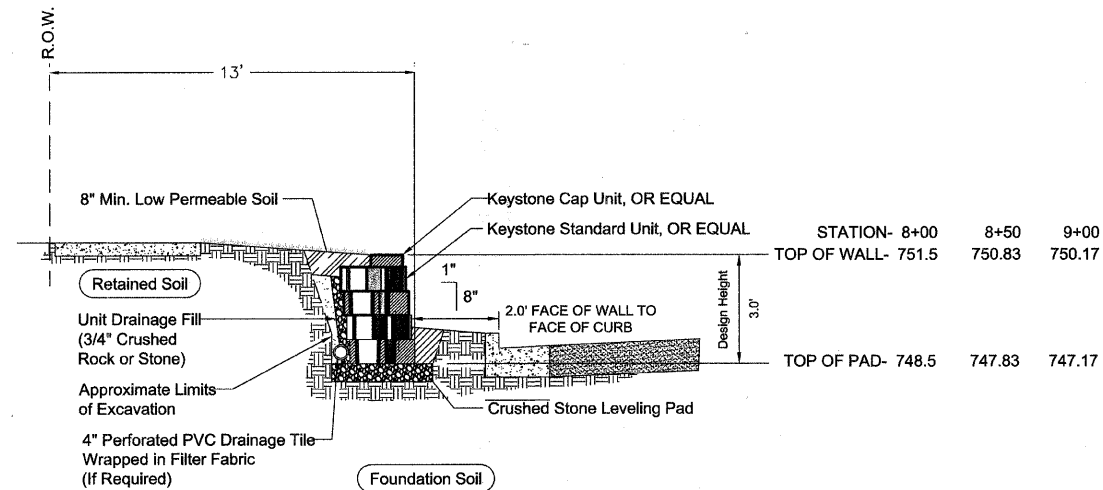


**Elevation**

**Note:**  
1. The leveling pad is to be constructed of crushed stone or 2000 psi ± unreinforced concrete.



**Leveling Pad Detail**



**MODULAR BLOCK RETAINING WALL**

Standard Unit - 1" Setback