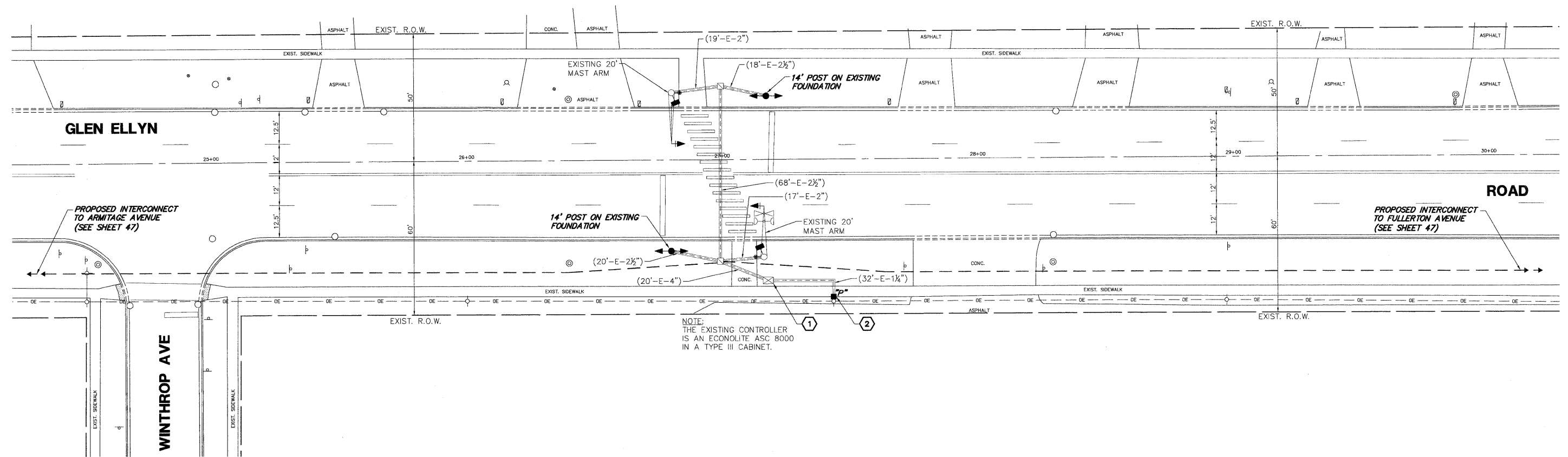
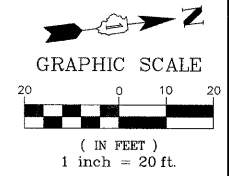


**CONSTRUCTION NOTES:**

- ① REMOVE EXISTING CONTROLLER AND CABINET (COMPLETE) AND DELIVER TO DuPAGE COUNTY DIVISION OF TRANSPORTATION. INSTALL NEW FULL-ACTUATED CONTROLLER AND TYPE II CABINET (POST-TOP MOUNTED).
- ② REMOVE EXISTING SERVICE INSTALLATION AND INSTALL NEW SERVICE INSTALLATION AND GROUND CABLE.



THE FOLLOWING EXISTING TRAFFIC SIGNAL EQUIPMENT SHALL BE REMOVED BY THE CONTRACTOR. THE EQUIPMENT SHALL REMAIN THE PROPERTY OF THE AGENCY LISTED BELOW. THE CONTRACTOR SHALL SAFELY STORE AND ARRANGE FOR PICK UP OR DELIVERY OF ALL EQUIPMENT TO BE RETURNED TO THE LISTED AGENCY AS PER THE TRAFFIC SIGNAL SPECIFICATIONS.

AGENCY: DuPAGE COUNTY DIVISION OF TRANSPORTATION  
 1 EACH CONTROLLER AND CABINET, (COMPLETE)

THE FOLLOWING ITEMS SHALL BE REMOVED BY THE CONTRACTOR AND SHALL BE DISPOSED OF BY THEM OUTSIDE THE RIGHT-OF-WAY AT THEIR EXPENSE. THE SALVAGE VALUE OF THE REMOVED EQUIPMENT SHALL BE REFLECTED IN THE CONTRACT BID PRICE.

- 2 EACH SIGNAL HEAD, 1-FACE, 3-SECTION
- 2 EACH SIGNAL HEAD, 2-FACE, 3-SECTION
- 2 EACH PEDESTRIAN SIGNAL HEAD
- 2 EACH PEDESTRIAN PUSH-BUTTON
- 2 EACH TRAFFIC SIGNAL BACKPLATE
- 2 EACH SIGNAL POST
- 1 EACH SERVICE INSTALLATION

THE TRAFFIC SIGNAL CONTROL EQUIPMENT FOR THIS PROJECT SHALL BE "ECONOLITE" TO MATCH THE EXISTING ADJACENT SYSTEM.

FILE NAME = 4281.800-TR1.dwg	USER NAME = ZACH WALLSTEN	DESIGNED - JRD	REVISED -	<b>STATE OF ILLINOIS DEPARTMENT OF TRANSPORTATION</b>	<b>MID-BLOCK CROSSING GLEN ELLYN ROAD AT MID-BLOCK CROSSING</b>	FAU. RTE.	SECTION	COUNTY	TOTAL SHEETS	SHEET NO.
	PLOT SCALE = 1" = .0833'	DRAWN - ZCW	REVISED -			2581	09-00206-08-TL	DuPAGE	53	30
	PLOT DATE = 12/16/2011	CHECKED - KLB	REVISED -			CONTRACT #:		63625		GHA #4281.800
				SCALE 1"=20'		SHEET NO. OF SHEETS		STA. TO STA.		ILLINOIS FED. AID PROJECT