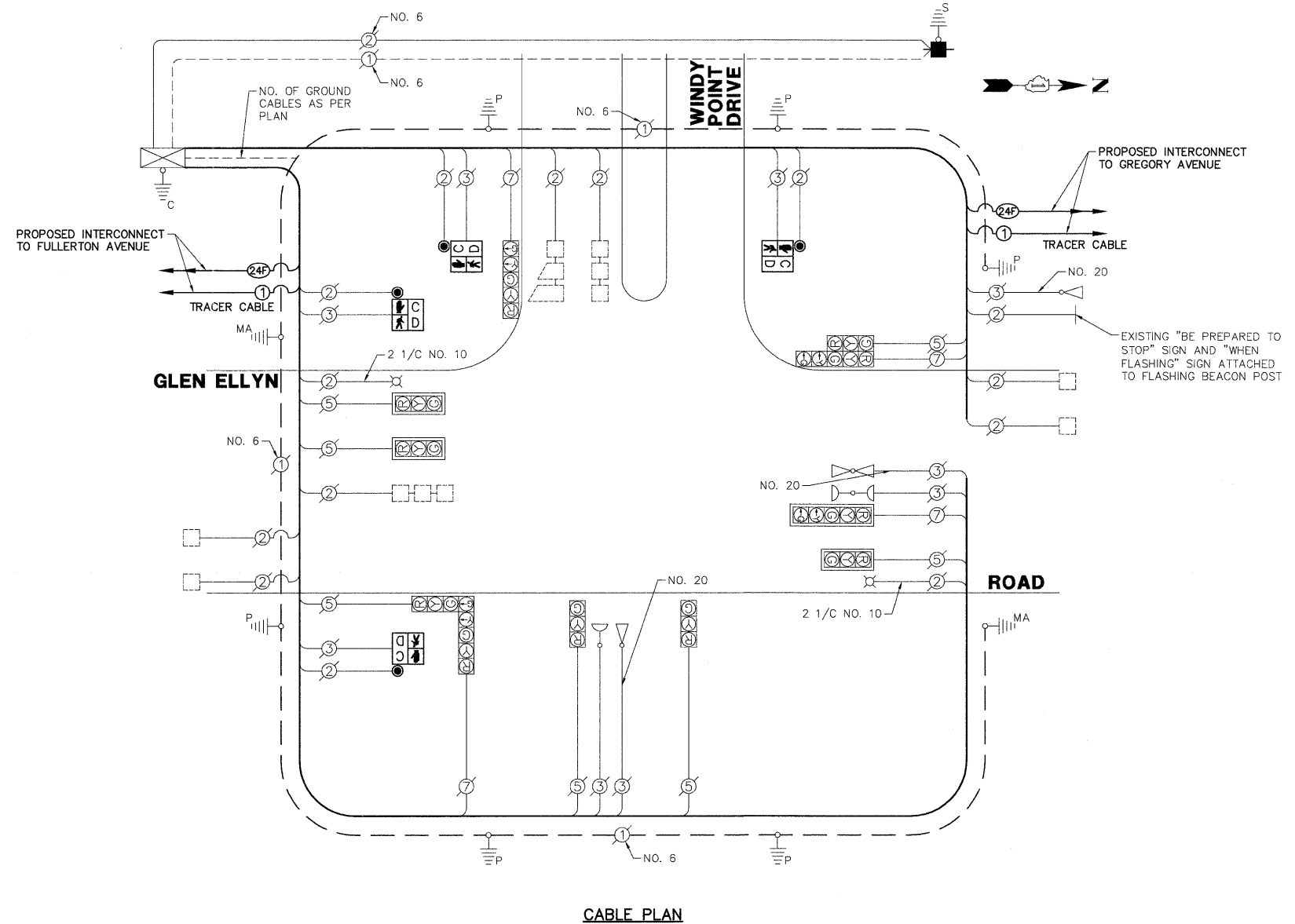
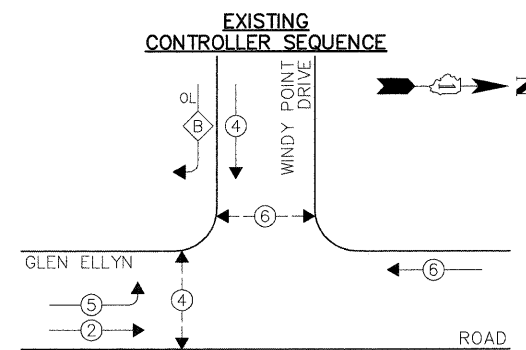


**SCHEDULE OF QUANTITIES**  
GLEN ELLYN ROAD AT WINDY POINT DRIVE

NO.	QUANT.	UNIT	DESCRIPTION
1.	2	CU YD	EARTH EXCAVATION
2.	44	SQ FT	DETECTABLE WARNINGS
3.	15	FOOT	COMBINATION CURB AND GUTTER REMOVAL
4.	275	SQ FT	SIDEWALK REMOVAL
5.	15	FOOT	COMBINATION CONCRETE CURB AND GUTTER, TYPE B-6.12
6.	1	EACH	SERVICE INSTALLATION - POLE MOUNTED
7.	1	EACH	MAINTENANCE OF EXISTING TRAFFIC SIGNAL INSTALLATION
8.	1	EACH	TRANSCIVER - FIBER OPTIC
9.	4	EACH	PEDESTRIAN SIGNAL HEAD, LED, 1-FACE, BRACKET MOUNTED WITH COUNTDOWN TIMER
10.	4	EACH	PEDESTRIAN PUSH-BUTTON
11.	1	EACH	REMOVE EXISTING TRAFFIC SIGNAL EQUIPMENT
12.	1	EACH	REMOVE EXISTING SERVICE INSTALLATION

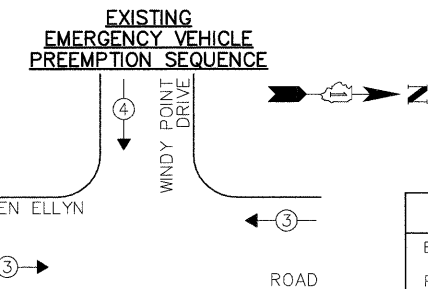


**CABLE PLAN**



OVERLAP LETTER    PERMISSIVE PHASE    PROTECTED PHASE  
 B = 4 + 5

**EXISTING PHASE DESIGNATION DIAGRAM**



EXISTING EMERGENCY VEHICLE PREEMPTORS			
EMERGENCY VEHICLE PREEMPTOR	3	4	
MOVEMENT	←	→	↑

I.D.O.T. TRAFFIC SIGNAL INSTALLATION ELECTRICAL SERVICE REQUIREMENTS					TOTAL WATTAGE
TYPE	NO. LAMPS	INCAND.	L.E.D.	% OPERATION	
SIGNAL (RED)	11	135	17	0.50	93.5
SIGNAL (YELLOW)	11	135	25	0.25	68.75
SIGNAL (GREEN)	11	135	15	0.25	41.25
ARROW	8	135	12	0.10	9.6
PED. SIGNAL	4	90	25	1.00	100.0
CONTROLLER	1	-	100	1.00	100.0
LUMINAIRE	2	250	-	0.50	250.0
L.E.D. ST. NAME SIGN	-	-	64	0.50	-
VIDEO SYSTEM	-	-	150	1.00	-
BATTERY BACKUP	-	-	25	1.00	-
ILLUMINATED SIGN	-	-	25	0.05	-
TOTAL =					663.1

THE TRAFFIC SIGNAL CONTROL EQUIPMENT FOR THIS PROJECT SHALL BE "ECONOLITE" TO MATCH THE EXISTING ADJACENT SYSTEM.

ENERGY COSTS - BILLED TO: VILLAGE OF GLENDALE HEIGHTS  
 (ADDRESS) 300 CIVIL CENTER PLAZA  
 (ADDRESS) GLENDALE HEIGHTS, IL 60139  
 ENERGY SUPPLY - CONTACT: MS. DEB RANKIN  
 PHONE: (630) 691-4379  
 COMPANY: COM-ED

FILE NAME = 4281.800-TR1.dwg	USER NAME = ZACH WALLSTEN
PLOT SCALE = 1" = .0833'	PLOT DATE = 12/16/2011

DESIGNED - JRD	REVISED -
DRAWN - ZCW	REVISED -
CHECKED - KLB	REVISED -
DATE - 12/16/2011	REVISED -

**STATE OF ILLINOIS**  
**DEPARTMENT OF TRANSPORTATION**

**SCHEDULE OF QUANTITIES, CABLE PLAN, PHASE DESIGNATION DIAGRAM, & EMERGENCY VEHICLE PREEMPTION SEQUENCE**  
**GLEN ELLYN ROAD AT WINDY POINT DRIVE**

FAU. RTE. 2581	SECTION 09-00206-08-TL	COUNTY DuPAGE	TOTAL SHEETS 53	SHEET NO. 35
CONTRACT # 63625			ILLINOIS FED. AID PROJECT	

GHA #4281.800