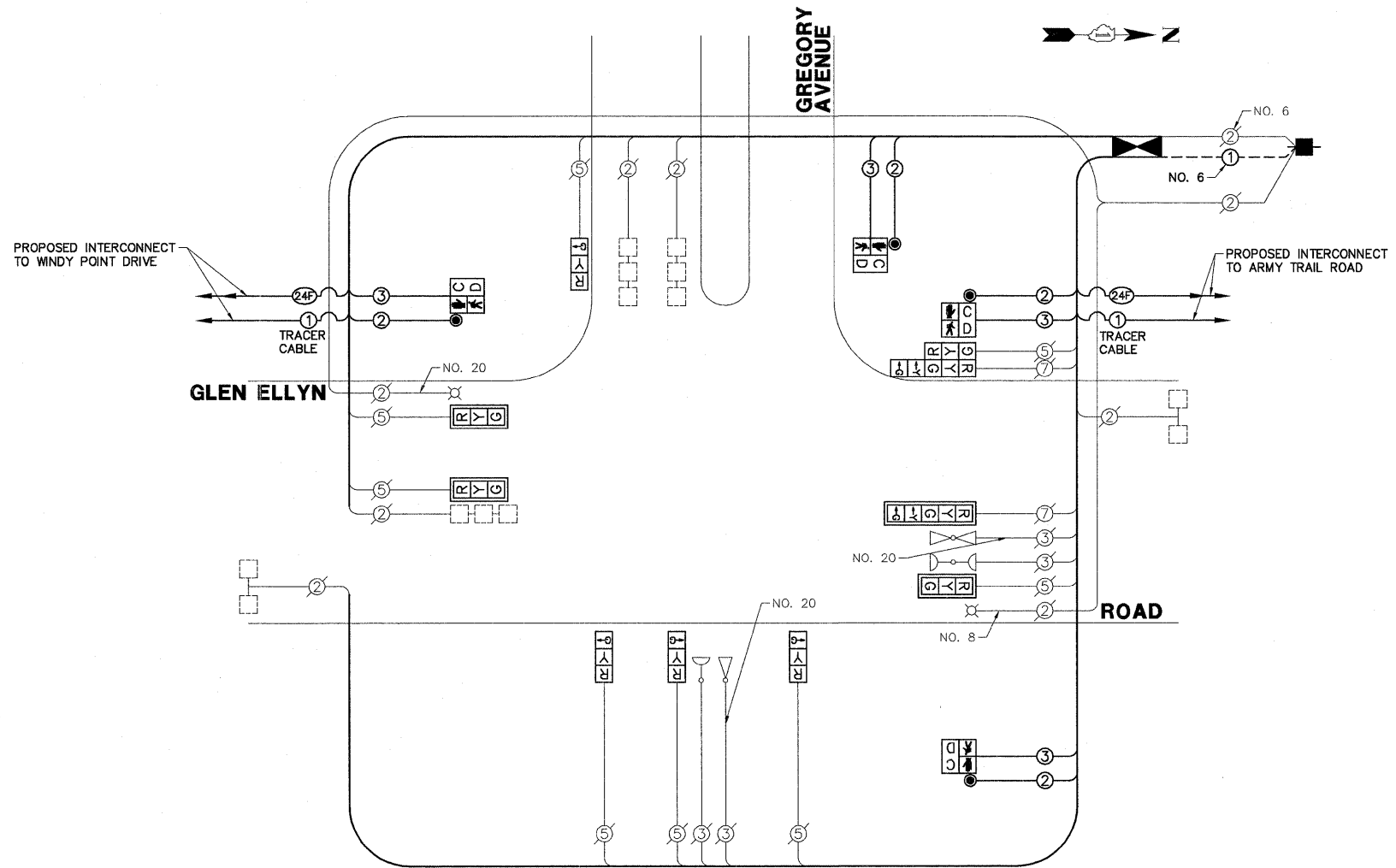


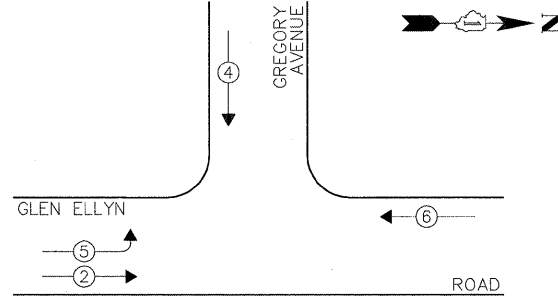
SCHEDULE OF QUANTITIES
GLEN ELLYN ROAD AT GREGORY AVENUE

NO.	QUANT.	UNIT
1.	4	CU YD EARTH EXCAVATION
2.	375	SQ FT PORTLAND CEMENT CONCRETE SIDEWALK 5 INCH
3.	52	SQ FT DETECTABLE WARNINGS
4.	65	FOOT COMBINATION CURB AND GUTTER REMOVAL
5.	285	SQ FT SIDEWALK REMOVAL
6.	65	FOOT COMBINATION CONCRETE CURB AND GUTTER, TYPE B-6.12
7.	240	FOOT THERMOPLASTIC PAVEMENT MARKING - LINE 12"
8.	1	EACH SERVICE INSTALLATION - POLE MOUNTED
9.	15	FOOT UNDERGROUND CONDUIT, GALVANIZED STEEL, 2 1/2" DIA.
10.	1	EACH MAINTENANCE OF EXISTING TRAFFIC SIGNAL INSTALLATION
11.	1	EACH FULL-ACTUATED CONTROLLER AND TYPE IV CABINET
12.	1	EACH TRANSCEIVER - FIBER OPTIC
13.	361	FOOT ELECTRIC CABLE IN CONDUIT, SIGNAL NO. 14 2C
14.	397	FOOT ELECTRIC CABLE IN CONDUIT, SIGNAL NO. 14 3C
15.	101	FOOT ELECTRIC CABLE IN CONDUIT, EQUIPMENT GROUNDING CONDUCTOR, NO. 6 1C
16.	2	EACH TRAFFIC SIGNAL POST, GALVANIZED STEEL 10 FT.
17.	3	EACH TRAFFIC SIGNAL POST, GALVANIZED STEEL 14 FT.
18.	1	EACH TRAFFIC SIGNAL POST, GALVANIZED STEEL 16 FT.
19.	8	FOOT CONCRETE FOUNDATION, TYPE A
20.	2	EACH DRILL EXISTING HANDHOLE
21.	3	EACH SIGNAL HEAD, LED, 1-FACE, 3-SECTION, MAST-ARM MOUNTED
22.	4	EACH SIGNAL HEAD, LED, 1-FACE, 3-SECTION, BRACKET MOUNTED
23.	1	EACH SIGNAL HEAD, LED, 1-FACE, 5-SECTION, MAST-ARM MOUNTED
24.	1	EACH SIGNAL HEAD, LED, 2-FACE, 1-3 SECTION, 1-5 SECTION, BRACKET MOUNTED
25.	4	EACH PEDESTRIAN SIGNAL HEAD, LED, 1-FACE, BRACKET MOUNTED WITH COUNTDOWN TIMER
26.	4	EACH TRAFFIC SIGNAL BACKPLATE, LOUVERED, ALUMINUM
27.	5	EACH INDUCTIVE LOOP DETECTOR
28.	4	EACH PEDESTRIAN PUSH-BUTTON
29.	1	EACH REMOVE EXISTING SERVICE INSTALLATION
30.	1	EACH RELOCATE EXISTING EMERGENCY VEHICLE PRIORITY SYSTEM, PHASING UNIT
31.	1	EACH REMOVE EXISTING TRAFFIC SIGNAL EQUIPMENT



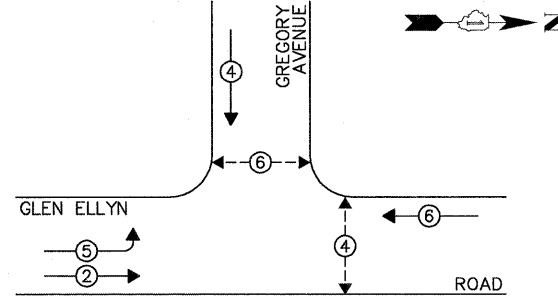
CABLE PLAN

EXISTING CONTROLLER SEQUENCE



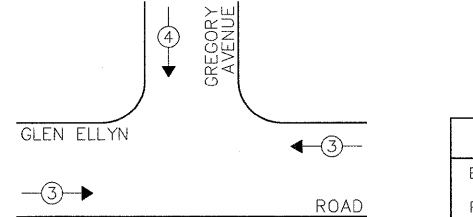
EXISTING PHASE DESIGNATION DIAGRAM

PROPOSED CONTROLLER SEQUENCE



PROPOSED PHASE DESIGNATION DIAGRAM

EXISTING EMERGENCY VEHICLE PREEMPTION SEQUENCE



EXISTING EMERGENCY VEHICLE PREEMPTORS	
EMERGENCY VEHICLE PREEMPTOR	3 4
MOVEMENT	→ ↓

THE TRAFFIC SIGNAL CONTROL EQUIPMENT FOR THIS PROJECT SHALL BE "ECONOLITE" TO MATCH THE EXISTING ADJACENT SYSTEM.

I.D.O.T. TRAFFIC SIGNAL INSTALLATION ELECTRICAL SERVICE REQUIREMENTS					TOTAL WATTAGE
TYPE	NO. LAMPS	INCAND.	WATTAGE L.E.D.	% OPERATION	
SIGNAL (RED)	10	135	17	0.50	85.0
SIGNAL (YELLOW)	10	135	25	0.25	62.5
SIGNAL (GREEN)	10	135	15	0.25	37.5
ARROW	4	135	12	0.10	4.8
PED. SIGNAL	4	90	25	1.00	100.0
CONTROLLER	1	-	100	1.00	100.0
LUMINAIRE	2	250	-	0.50	250.0
L.E.D. ST. NAME SIGN	-	-	64	0.50	-
VIDEO SYSTEM	-	-	150	1.00	-
BATTERY BACKUP	-	-	25	1.00	-
ILLUMINATED SIGN	-	-	25	0.05	-
TOTAL =					639.8

ENERGY COSTS - BILLED TO: VILLAGE OF GLENDALE HEIGHTS (ADDRESS) 300 CIVIL CENTER PLAZA (ADDRESS) GLENDALE HEIGHTS, IL 60139
ENERGY SUPPLY - CONTACT: MS. DEB RANKIN (PHONE: (630) 691-4379 COMPANY: COM-ED

FILE NAME = 4281.800-TR1.dwg	USER NAME = ZACH WALLSTEN	DESIGNED - JRD	REVISED -
		DRAWN - ZCW	REVISED -
		CHECKED - KLB	REVISED -
		DATE - 12/16/2011	REVISED -

STATE OF ILLINOIS
DEPARTMENT OF TRANSPORTATION

SCHEDULE OF QUANTITIES, CABLE PLAN, PHASE DESIGNATION DIAGRAM, & EMERGENCY VEHICLE PREEMPTION SEQUENCE			
GLEN ELLYN ROAD AT GREGORY AVENUE			
SCALE: N.A.	SHEET NO.	OF SHEETS	STA. TO STA.

FAU. RTE. 2581	SECTION 09-00206-08-TL	COUNTY DuPAGE	TOTAL SHEETS 53	SHEET NO. 37
CONTRACT # 63625			ILLINOIS FED. AID PROJECT	

GHA #4281.800