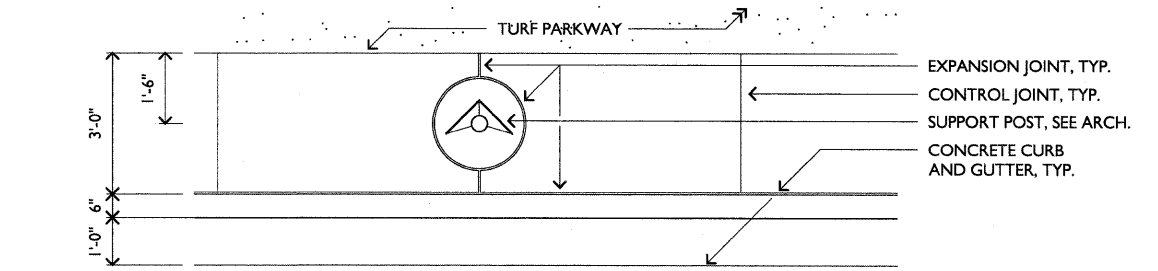
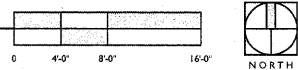


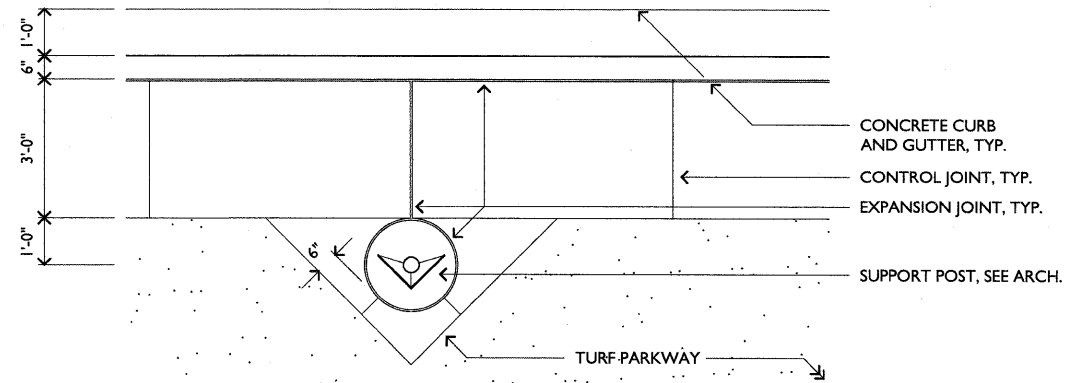
2 TYPICAL MEDIAN PLANTING PLAN

SCALE: 1/8" = 1'-0"



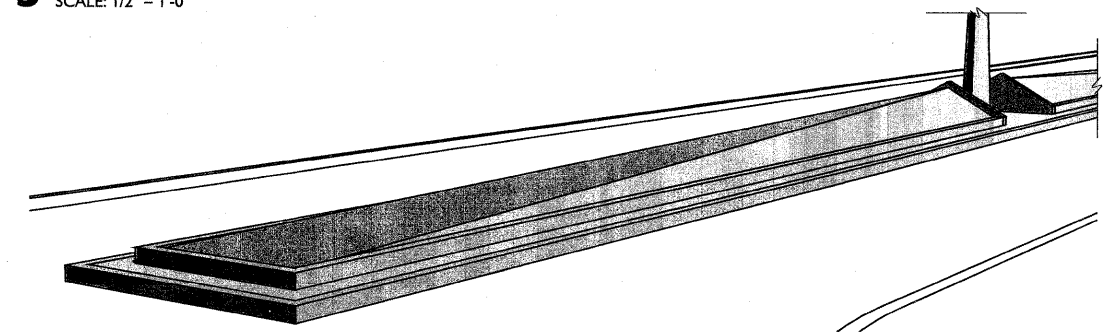
2 TYPICAL SUPPORT POST IN CONCRETE COURTESY STRIP

SCALE: 1/2" = 1'-0"



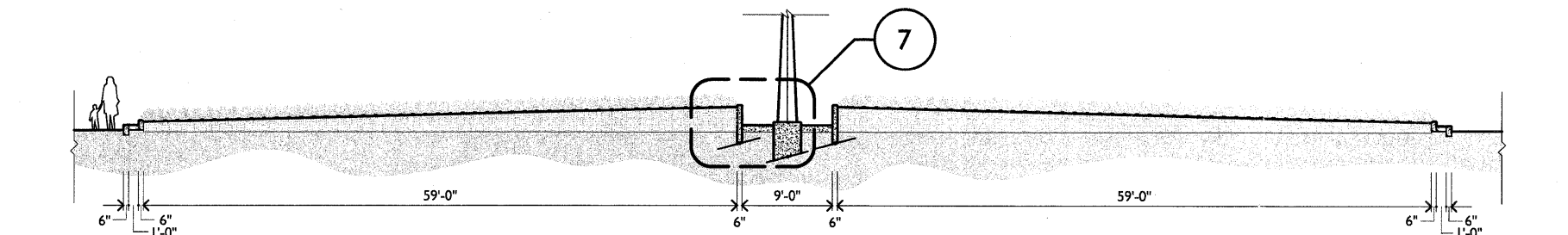
3 TYPICAL SUPPORT POST IN TURF PARKWAY

SCALE: 1/2" = 1'-0"



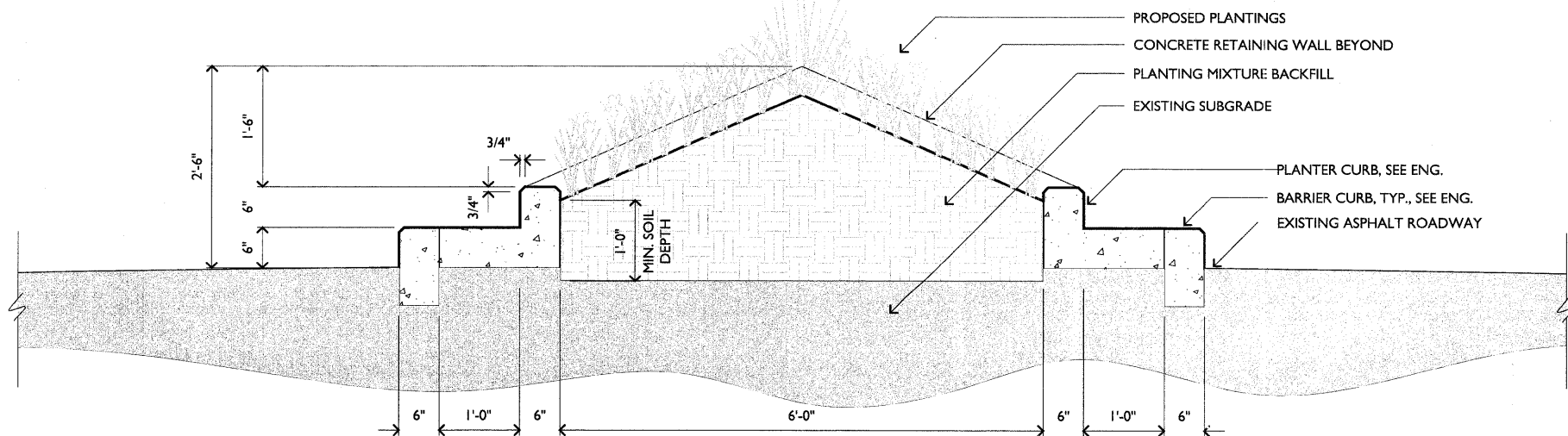
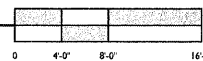
5 TYPICAL MEDIAN PLANTER PERSPECTIVE

NOT TO SCALE



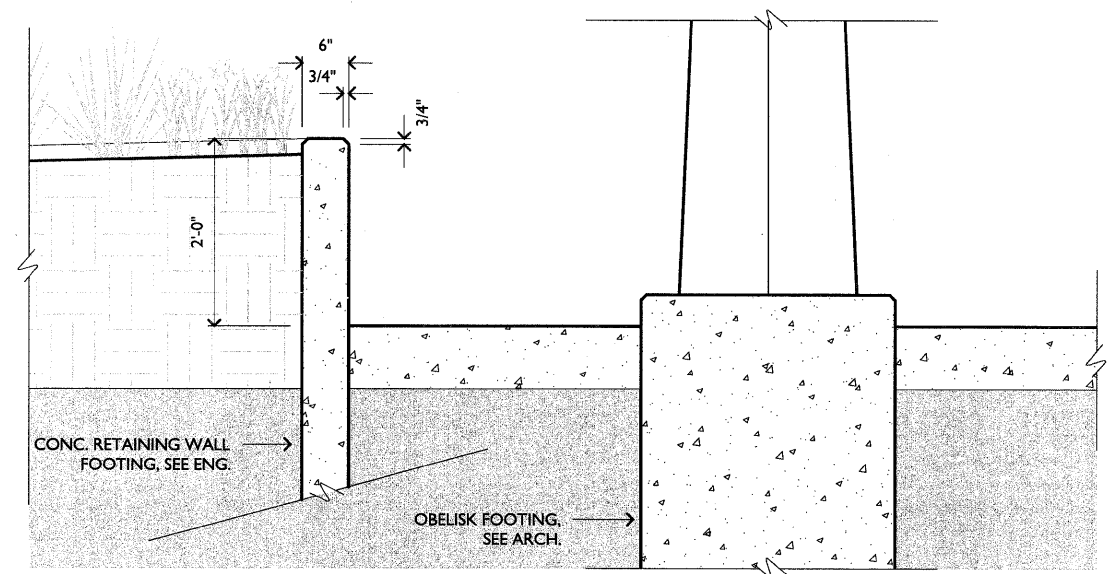
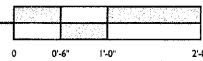
4 TYPICAL MEDIAN LONGITUDINAL SECTION

SCALE: 1/8" = 1'-0"



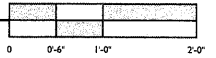
6 TYPICAL MEDIAN TRANSVERSE SECTION

SCALE: 1" = 1'-0"



7 TYPICAL RETAINING WALL INSTALLATION DETAIL

SCALE: 1" = 1'-0"



Drawing file: S:\Projects\Division Street Enhancements-M-10028\Cad\Issue for CD\CD-CURRENT\18_ENLARGED MEDIAN PLANS.dwg Feb 02, 2012 - 10:17am



WOLFF LANDSCAPE ARCHITECTURE
WINDHORST GORSKI ARCHITECTS

DESIGNED -	TGW / PMB	REVISED -	
DRAWN -	PMB	REVISED -	
CHECKED -	TGW	REVISED -	
DATE -	02.06.12	REVISED -	

STATE OF ILLINOIS
DEPARTMENT OF TRANSPORTATION

DIVISION STREET ENLARGED PLANS, TYPICAL MEDIAN

SCALE: SHEET NO. 18 OF 40 SHEETS STA. TO STA.

F.A.U. RTE.	SECTION	COUNTY	TOTAL SHEETS	SHEET NO.
1026	10-00116-00-SW	COOK	40	18
FED. ROAD DIST. NO. 1 ILLINOIS			CONTRACT NO. 63631	
			FED. AID PROJ. M-TE-00D1(826)	