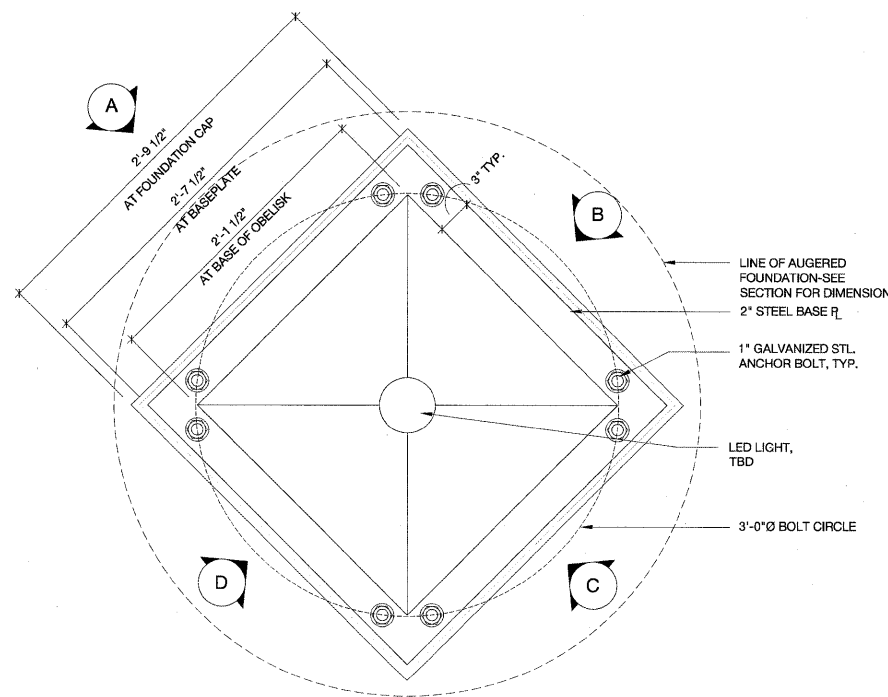


F4 Plan at Medium Obelisk Baseplate

SCALE: 1 1/2"=1'-0"



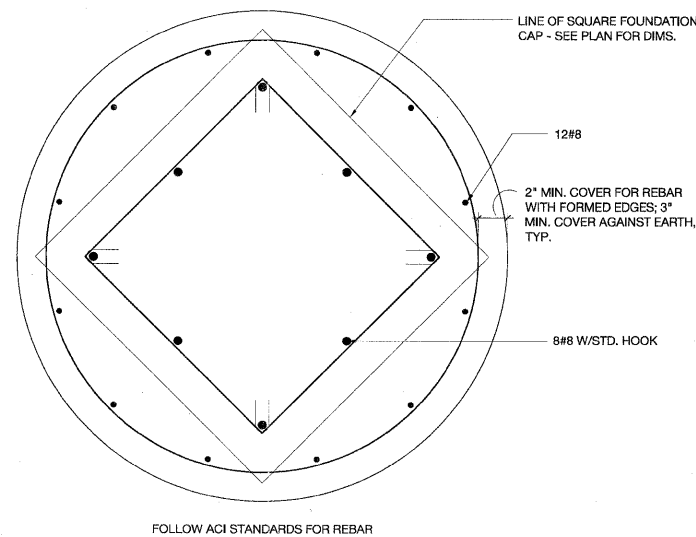
F4 Plan at Large Obelisk Baseplate

SCALE: 1 1/2"=1'-0"

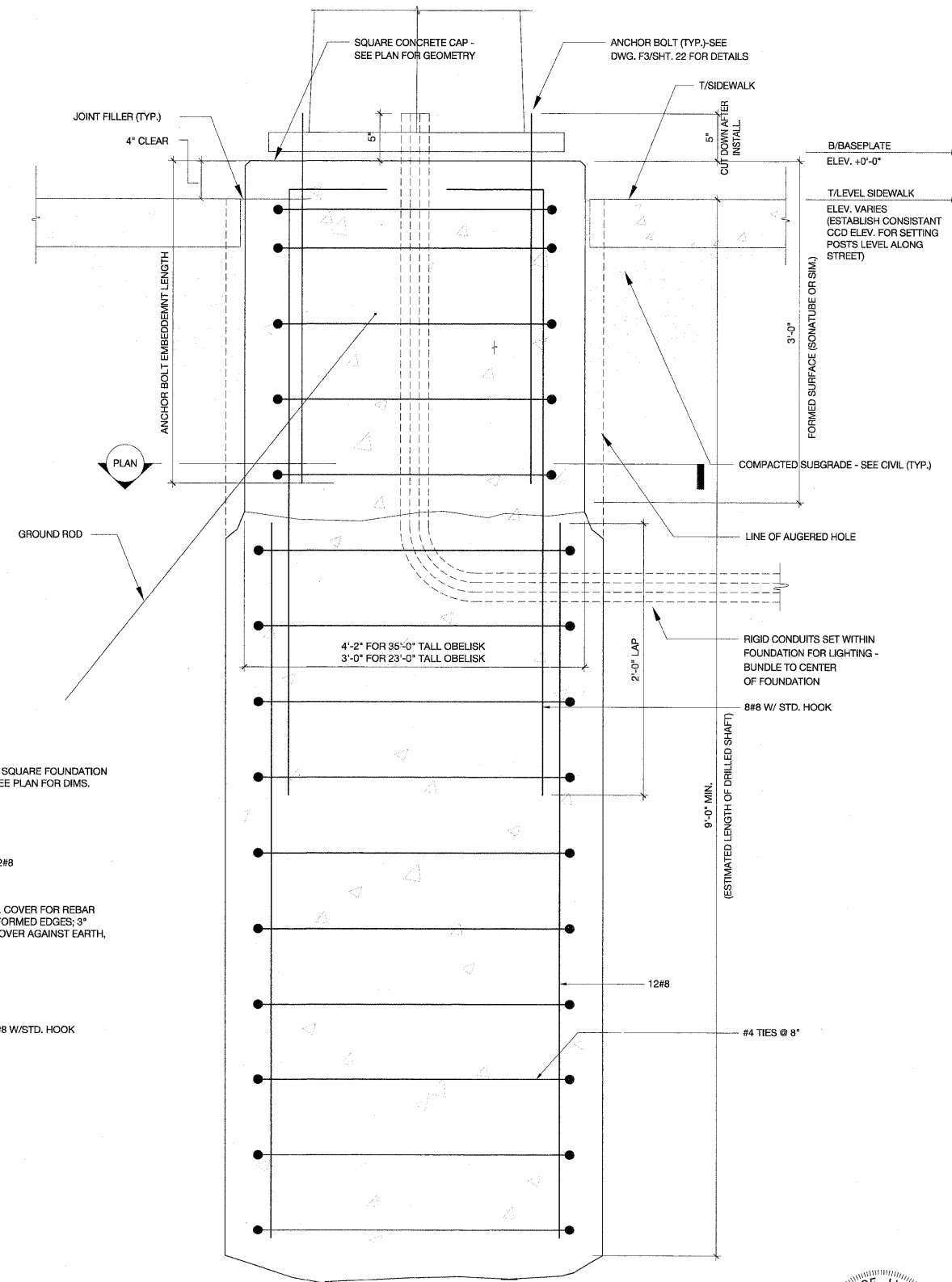
ELEMENT	REINFORCEMENT			ANCHOR BOLTS			
	SHAFT DIAMETER	VERTICAL BARS	TIES	BOLT CIRCLE	NO.	SIZE	EMBED. LENGTH
STEELPOST - Monument Foundation Type A	2'-0"	12-#8	#4@8"	1'-4"	4	1"	2'-0"
MEDIUM OBELISK - Monument Foundation Type B	3'-0"	12#8 and 8#8 w/standard hook	#4@8"	2'-0"	8	1"	2'-0"
LARGE OBELISK - Monument Foundation Type C	4'-2"	12#8 and 8#8 w/standard hook	#4@6"	3'-0"	8	1"	2'-0"

FOUNDATION NOTES:

1. THE HOLE FOR THE FOUNDATION SHALL BE AUGERED.
2. FOUNDATION DESIGN IS BASED ON SOIL CONSISTING OF LOOSE TO MEDIUM DENSE FILL AND SAND WITH BLOW COUNT OF 7 TO 10 PER FOOT, OR IN COHESIVE SOIL A MINIMUM UNCONFINED COMPRESSIVE STRENGTH OF 1.5 tsf.
3. THE ANCHOR BOLTS SHALL BE VERTICAL. NO ADJUSTMENT SHALL BE ALLOWED AFTER THE CONCRETE IS IN PLACE.
4. ANCHOR BOLTS SHALL BE A307 STEEL, GALVANIZED AS SHOWN IN DETAIL F3/SHT.22.
5. CAISSON CONCRETE: $f'_c=3,500\text{psi}$
REINFORCEMENT: $f_y=60,000\text{psi}$



Foundation Reinforcing Plan



F6 Section Through Monument Foundation -Types B and C

SCALE: 1-1/2"=1'-0"



James A. Gorski
11-10-11

Drawing file: c:\Users\Gorski\Family\Desktop\ArchPlans-REUSED.dwg Feb 03, 2012 - 12:10pm

HANCOCK ENGINEERING
WOLFF LANDSCAPE ARCHITECTURE
EDWARD WINDHORST JAMES GORSKI ARCHITECTS
GOODFRIEND MAGRUDER STRUCTURE

DESIGNED -- EW	REVISED --
DRAWN -- JG	REVISED --
CHECKED -- JG	REVISED --
DATE -- 02/06/12	REVISED --

**STATE OF ILLINOIS
DEPARTMENT OF TRANSPORTATION**

Steel Obelisk Plan and Foundation Details

F.A.U. RTE. 1026	SECTION 10-00116-00-SW	COUNTY COOK	TOTAL SHEETS -	SHEET NO. 25
SCALE: SHEET NO. OF SHEETS STA. TO STA.		CONTRACT NO. ---		
FED. ROAD DIST. NO. 1 ILLINOIS		FED. AID PROJECT ---		

EHE PROJECT NO. 600-11-04602