

F. A. S. NO.	SECTION	COUNTY	TOTAL SHEETS	SHEET NO.
1042	11-00116-00-RS	COOK	11	1
STA. TO STA.				
FED. ROAD DIST. NO.		CLASSES	FED. AID PROJECT M-9003(908)	

CONTRACT #63677

STATE OF ILLINOIS  
DEPARTMENT OF TRANSPORTATION  
DIVISION OF HIGHWAYS

**PLANS FOR PROPOSED  
FEDERAL AID HIGHWAY**

**FAU 1042 (WOODLAWN AVENUE)  
FAP 397 (SIBLEY BLVD) TO FAU 3593 (LINCOLN AVE)  
ROADWAY RESURFACING  
SECTION NO.: 11-00116-00-RS  
PROJECT NO.: M-9003 (908)  
VILLAGE of DOLTON  
COOK COUNTY  
JOB NO.: C-91-161-12**

**INDEX OF SHEETS**

- COVER SHEET, INDEX OF SHEETS & STATE STANDARDS
- SUMMARY OF QUANTITIES
- TYPICAL CROSS SECTIONS
- PAVEMENT PLAN
- PAVEMENT MARKINGS
- 6.-11. IDOT DISTRICT 1 STANDARD DETAILS

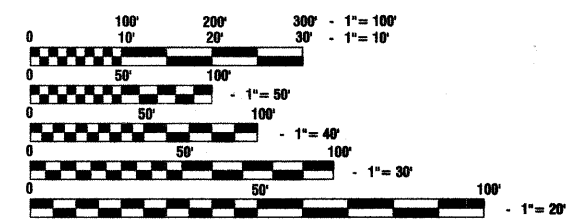
**HIGHWAY STANDARDS**

- 000001-06 STANDARD SYMBOLS, ABBREVIATIONS AND PATTERNS
- 424001-06 PERPENDICULAR CURB RAMPS FOR SIDEWALKS
- 442201-03 CLASS C AND D PATCHES
- 602001-02 CATCH BASIN, TYPE A
- 606001-04 CONCRETE CURB TYPE B AND COMBINATION CONCRETE CURB AND GUTTER
- 701501-06 URBAN LANE CLOSURE, 2L, 2W UNDIVIDED
- 701801-05 SIDEWALK, CORNER OR CROSSWALK CLOSURE
- 701901-02 TRAFFIC CONTROL DEVICES
- 886001-01 DETECTOR LOOP INSTALLATIONS
- 886006-01 TYPICAL LAYOUT FOR DETECTION LOOPS

PROGRAM AND OFFICE ENGINEER: CHARLES F. RIDDLE, PE (847)705-4406, SCHAUMBURG, IL  
CONSULTANTS: ROBINSON ENGINEERING, LTD. 708-331-6700

	WOODLAWN AVENUE
2010 ADT -	2,400
2040 ADT -	2,400
POSTED SPEED LIMIT -	25 mph
DESIGN PERIOD -	20 YEARS
DESIGN SPEED LIMIT -	30 mph
STREET CLASSIFICATION -	COLLECTOR

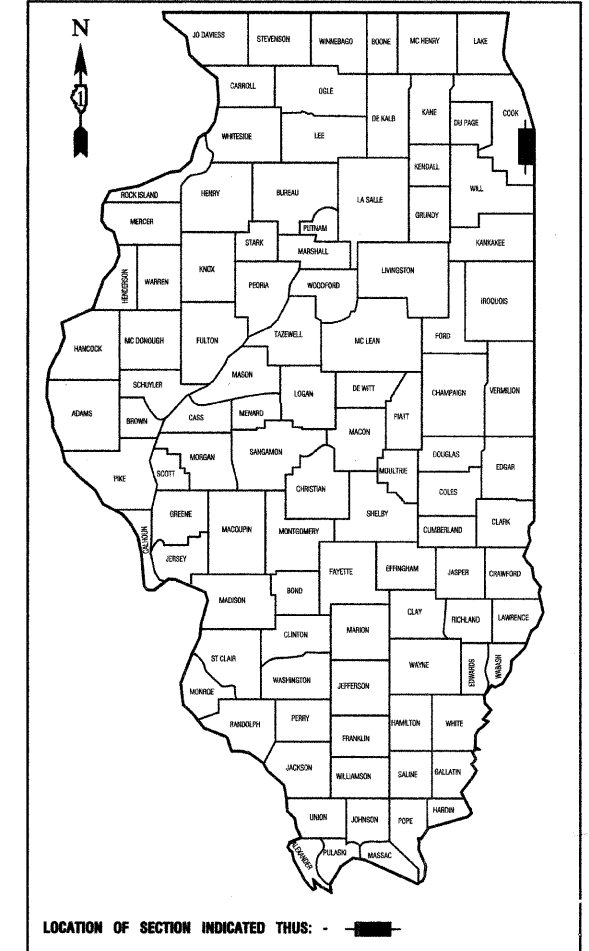
SCALES  
 PLAN - 1"=50'  
 PROFILE HORIZ. - 1"=50'  
 PROFILE VERT. - 1"=5'  
 CROSS SECTIONS - 1"=10'



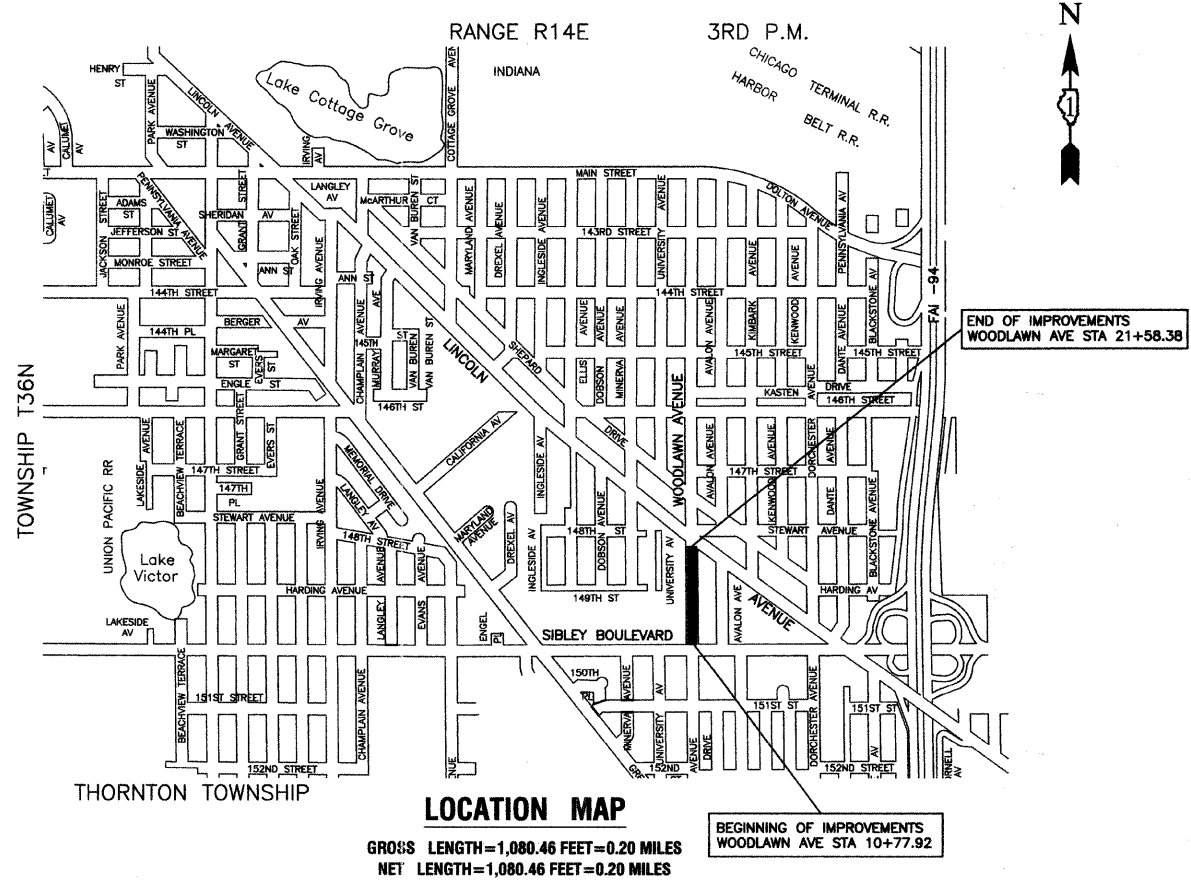
FULL SIZE PLANS HAVE BEEN PREPARED USING STANDARD ENGINEERING SCALES, REDUCED SIZED PLANS WILL NOT CONFORM TO STANDARD SCALES, IN MAKING MEASUREMENTS ON REDUCED PLANS, THE ABOVE SCALES MAY BE USED.

J. U. L. I. E.  
JOINT UTILITY LOCATION INFORMATION FOR EXCAVATION  
1-800-892-0123 or 811

**CONTRACT NO. 63677**



LOCATION OF SECTION INDICATED THUS: -



**LOCATION MAP**

GROSS LENGTH=1,080.46 FEET=0.20 MILES  
NET LENGTH=1,080.46 FEET=0.20 MILES

STATE OF ILLINOIS DEPARTMENT OF TRANSPORTATION  
DIVISION OF HIGHWAYS

Approved: 1-31-12  
*Hennie C. Lewis*  
President, Village of Dolton

Passed: FEBRUARY 19, 2012  
*C. H. [Signature]*  
District 1 Engineer of Local Roads & Streets

Released for Bid Based on Limited Review: FEBRUARY 14, 2012  
*Deane M. O'Keefe*  
Deputy Director of Highways, Region 1 Engineer

PRINTED BY THE AUTHORITY OF THE STATE OF ILLINOIS

PREPARED BY OR UNDER THE DIRECT SUPERVISION OF:

*[Signature]*  
1-31-12

