

STATE OF ILLINOIS
DEPARTMENT OF TRANSPORTATION
DIVISION OF HIGHWAYS

PLANS FOR PROPOSED FEDERAL AID HIGHWAY

FAU 1072 (DANTE AVENUE)
FAU 3603(GLENWOOD-DYER ROAD) TO
FAU 1627 (GLENWOOD-LANSING ROAD)
ROADWAY RESURFACING
SECTION NO.: 11-00054-00-RS
PROJECT NO. : M-9003(906)
VILLAGE of GLENWOOD
COOK COUNTY
JOB NO. C-91-163-12

F. A. U. NO.	SECTION	COUNTY	TOTAL SHEETS	SHEET NO.
1072	11-00054-00-RS	COOK	10	1
STA. TO STA.				
FED. ROAD DIST. NO. 1		ILLINOIS FED. AID PROJECT M-9003(906)		

CONTRACT #63679

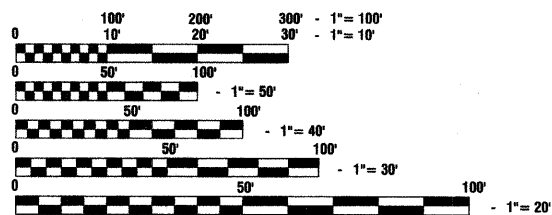
- INDEX OF SHEETS**
- COVER SHEET, INDEX OF SHEETS & STATE STANDARDS
 - SUMMARY OF QUANTITIES & GENERAL NOTES
 - TYPICAL CROSS SECTIONS
 - PAVEMENT PLAN
 - PAVEMENT MARKINGS
 - 10. IDOT DISTRICT 1 STANDARD DETAILS

- HIGHWAY STANDARDS**
- | | |
|-----------|--|
| 000001-06 | STANDARD SYMBOLS, ABBREVIATIONS AND PATTERNS |
| 424001-06 | PERPENDICULAR CURB RAMPS FOR SIDEWALKS |
| 442201-03 | CLASS C AND D PATCHES |
| 606001-04 | CONCRETE CURB TYPE B AND COMBINATION CONCRETE CURB AND GUTTER |
| 701501-06 | URBAN LANE CLOSURE, 2L, 2W, UNDIVIDED |
| 701801-05 | LANE CLOSURE, MULTILANE 1W OR 2W CROSSWALK OR SIDEWALK CLOSURE |
| 701901-02 | TRAFFIC CONTROL DEVICES |

DANTE AVENUE	
2010 ADT -	2,500
2040 ADT -	2,500
POSTED SPEED LIMIT -	25 mph
DESIGN PERIOD -	20 YEARS
DESIGN SPEED LIMIT -	30 mph
DESIGN DESIGNATION -	URBAN, COLLECTOR

SCALES

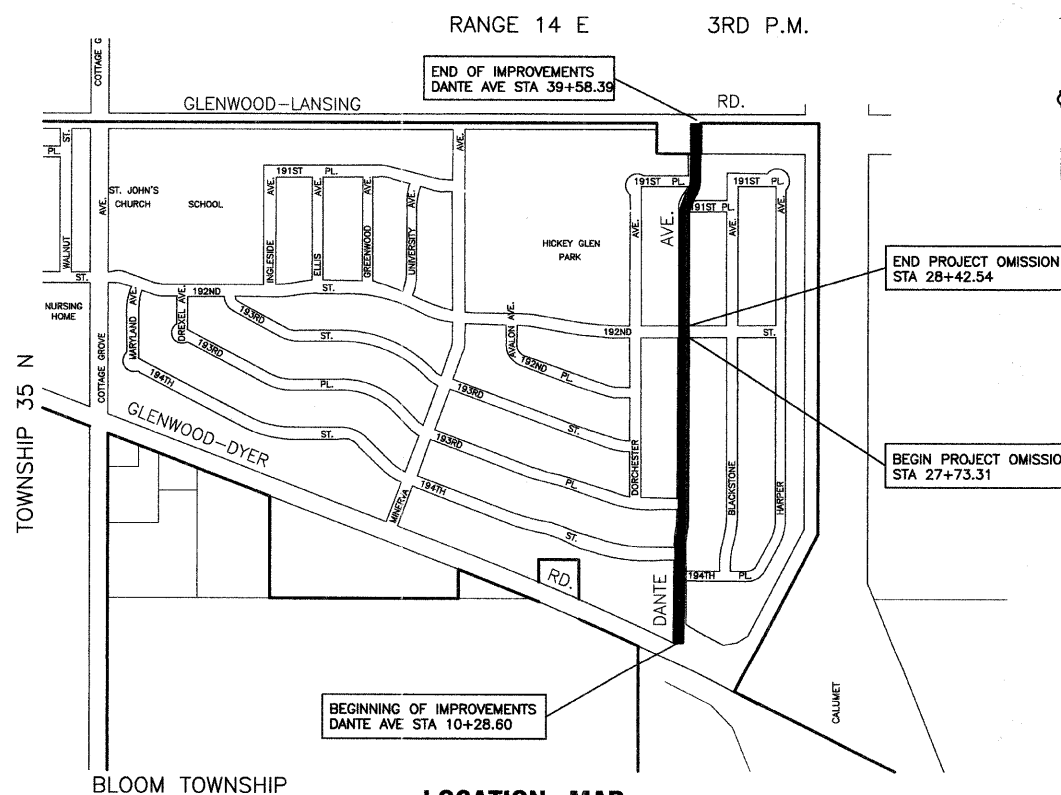
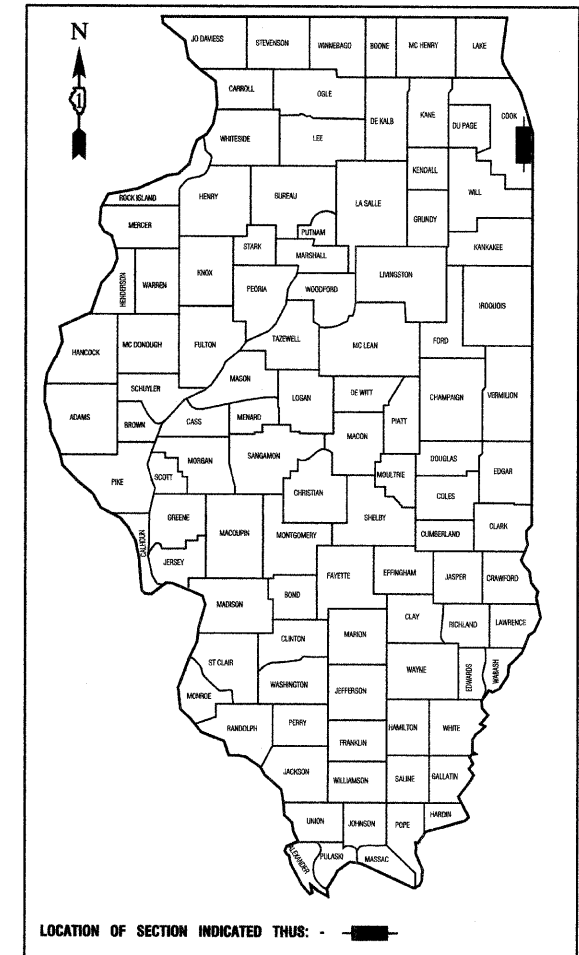
PLAN - 1"=50'
PROFILE HORIZ. - 1"=50'
PROFILE VERT. - 1"=5'
CROSS SECTIONS - 1"=10'



FULL SIZE PLANS HAVE BEEN PREPARED USING STANDARD ENGINEERING SCALES, REDUCED SIZED PLANS WILL NOT CONFORM TO STANDARD SCALES, IN MAKING MEASUREMENTS ON REDUCED PLANS, THE ABOVE SCALES MAY BE USED.

J. U. L. I. E.
JOINT UTILITY LOCATION INFORMATION FOR EXCAVATION
1-800-892-0123 or 811

CONTRACT NO. 63679



LOCATION MAP

GROSS LENGTH=2,930 FEET=0.55 MILES
NET LENGTH=2,861 FEET=0.54 MILES

STATE OF ILLINOIS DEPARTMENT OF TRANSPORTATION
DIVISION OF HIGHWAYS

Approved: 1-31-2012
Randy White
President, Village of Glenwood

Passed: FEBRUARY 14, 2014
Chris Smith
District 1 Engineer of Local Roads & Streets

Released for Bid Based on Limited Review: FEBRUARY 14, 2012
Diana M. O'Keefe
Deputy Director of Highways, Region 1 Engineer

PRINTED BY THE AUTHORITY OF
THE STATE OF ILLINOIS

PREPARED BY OR UNDER THE
DIRECT SUPERVISION OF:

John K. Baker
1-31-12



LICENSE EXPIRES: 11/30/13