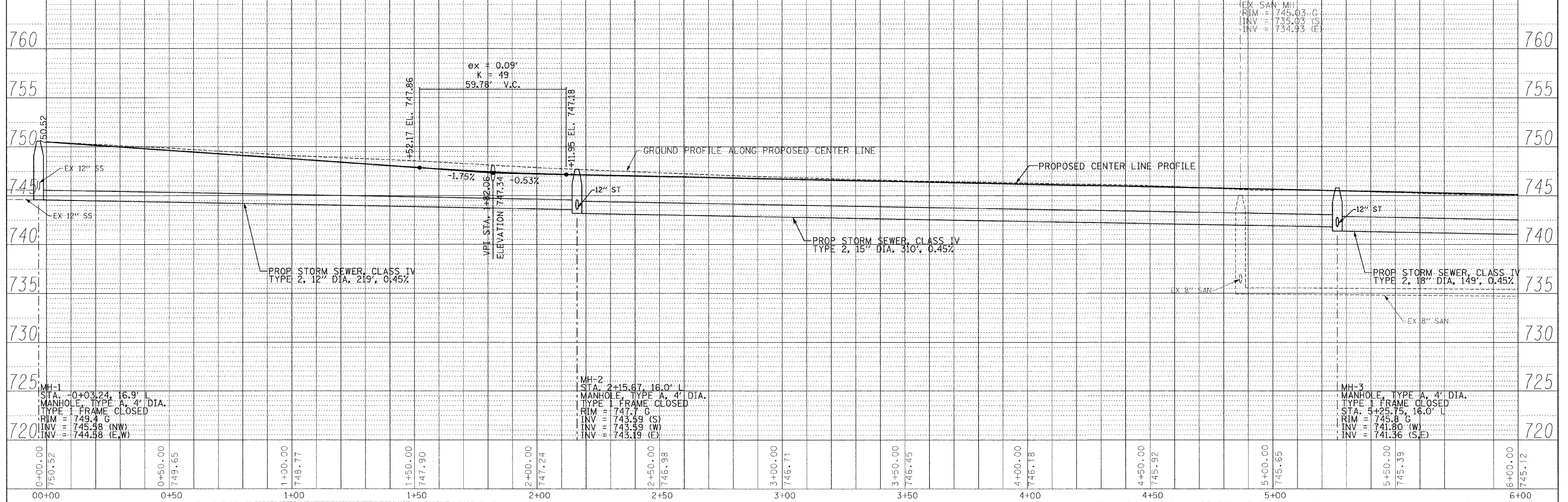
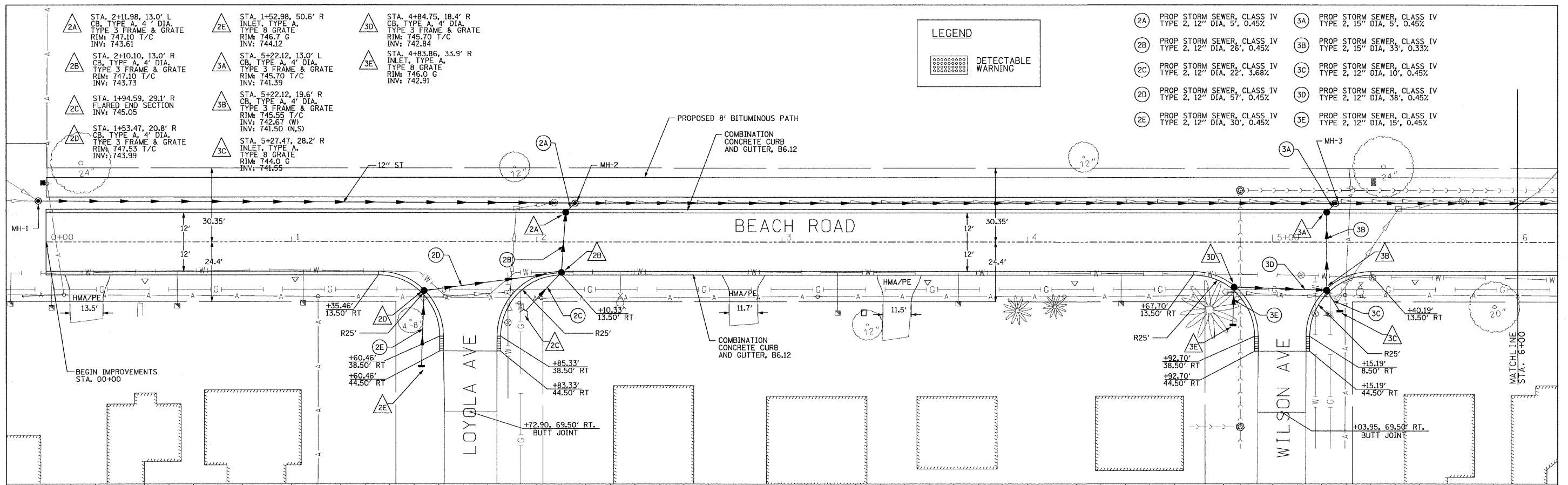


PLAN	SURVEYED	DATE
	PLOTTED	
	NOTED	
	BY	
	NO.	

PROFILE	SURVEYED	DATE
	PLOTTED	
	NOTED	
	BY	
	NO.	



0+00.00	750.52	0+50.00	749.65	1+00.00	748.77	1+50.00	747.90	2+00.00	747.24	2+50.00	746.98	3+00.00	746.71	3+50.00	746.45	4+00.00	746.18	4+50.00	745.92	5+00.00	745.65	5+50.00	745.39	6+00.00	745.12
---------	--------	---------	--------	---------	--------	---------	--------	---------	--------	---------	--------	---------	--------	---------	--------	---------	--------	---------	--------	---------	--------	---------	--------	---------	--------

RHMG JOB NO 21108030	DESIGNED - CMP DRAWN - NAT CHECKED - BWM DATE - 12/7/11	REVISED - 2/6/12 REVISED - 2/22/12 REVISED - REVISED -	RHMG REZEK, HENRY, MEISENHEIMER, and GENDE, INC. CONSULTING ENGINEERS 976 CAMPUS DRIVE MUNDELEIN, ILLINOIS 60060 847-382-8989 www.rhmg.com info@rhmg.com	536 TOLLWAY RD. SUITE F ELGIN, ILLINOIS 60120 847-742-8989	VILLAGE OF BEACH PARK BEACH ROAD BEACH PARK, ILLINOIS	PLAN AND PROFILE V: 1"=5' SCALE: H: 1"=20' SHEET NO. 15 OF 47 SHEETS STA. 0+00 TO STA. 6+00	F.A. RTE. 1210 SECTION 11-00012-00-PV COUNTY LAKE TOTAL SHEETS 47 SHEET NO. 15 CONTRACT NO. 63683
----------------------	--	---	--	--	--	--	--

LEGEND

DETECTABLE WARNING

- (2A) PROP STORM SEWER, CLASS IV TYPE 2, 12" DIA, 5', 0.45%
- (2B) PROP STORM SEWER, CLASS IV TYPE 2, 12" DIA, 26', 0.45%
- (2C) PROP STORM SEWER, CLASS IV TYPE 2, 12" DIA, 22', 3.68%
- (2D) PROP STORM SEWER, CLASS IV TYPE 2, 12" DIA, 57', 0.45%
- (2E) PROP STORM SEWER, CLASS IV TYPE 2, 12" DIA, 30', 0.45%
- (3A) PROP STORM SEWER, CLASS IV TYPE 2, 15" DIA, 5', 0.45%
- (3B) PROP STORM SEWER, CLASS IV TYPE 2, 15" DIA, 33', 0.33%
- (3C) PROP STORM SEWER, CLASS IV TYPE 2, 12" DIA, 10', 0.45%
- (3D) PROP STORM SEWER, CLASS IV TYPE 2, 12" DIA, 38', 0.45%
- (3E) PROP STORM SEWER, CLASS IV TYPE 2, 12" DIA, 15', 0.45%