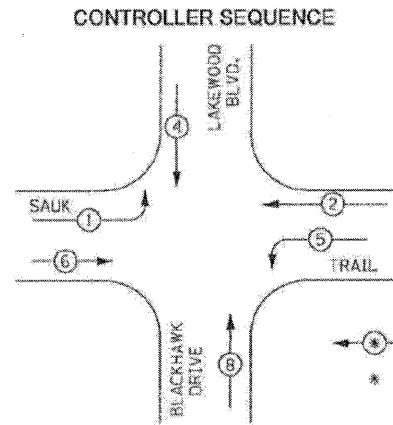
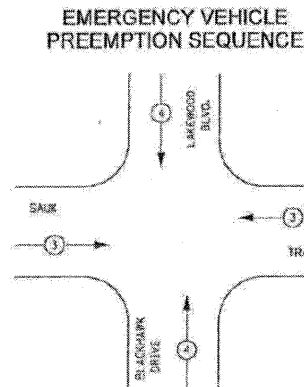


COUNTY HIGHWAY	FISCAL YEAR	SHEET NO.	TOTAL SHEETS
CH			

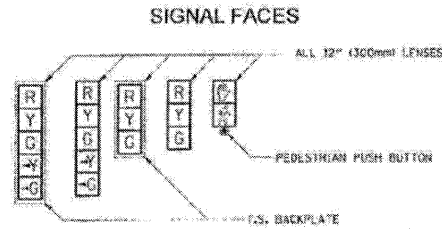
SECTION: 01-C1130-04-EP



PHASE DESIGNATION DIAGRAM
 DUAL ENTRY - ALL LEGS
 PROTECTED / PERMITTED LEFT TURN PHASING



PROPOSED EMERGENCY VEHICLE PREEMPTOR	
EMERGENCY VEHICLE PREEMPTOR	3 4
MOVEMENT	II II



- SIGNAL LENSES**
- R RED
 - Y YELLOW
 - C GREEN
 - Y- YELLOW TURN INDICATOR
 - G- GREEN TURN INDICATOR



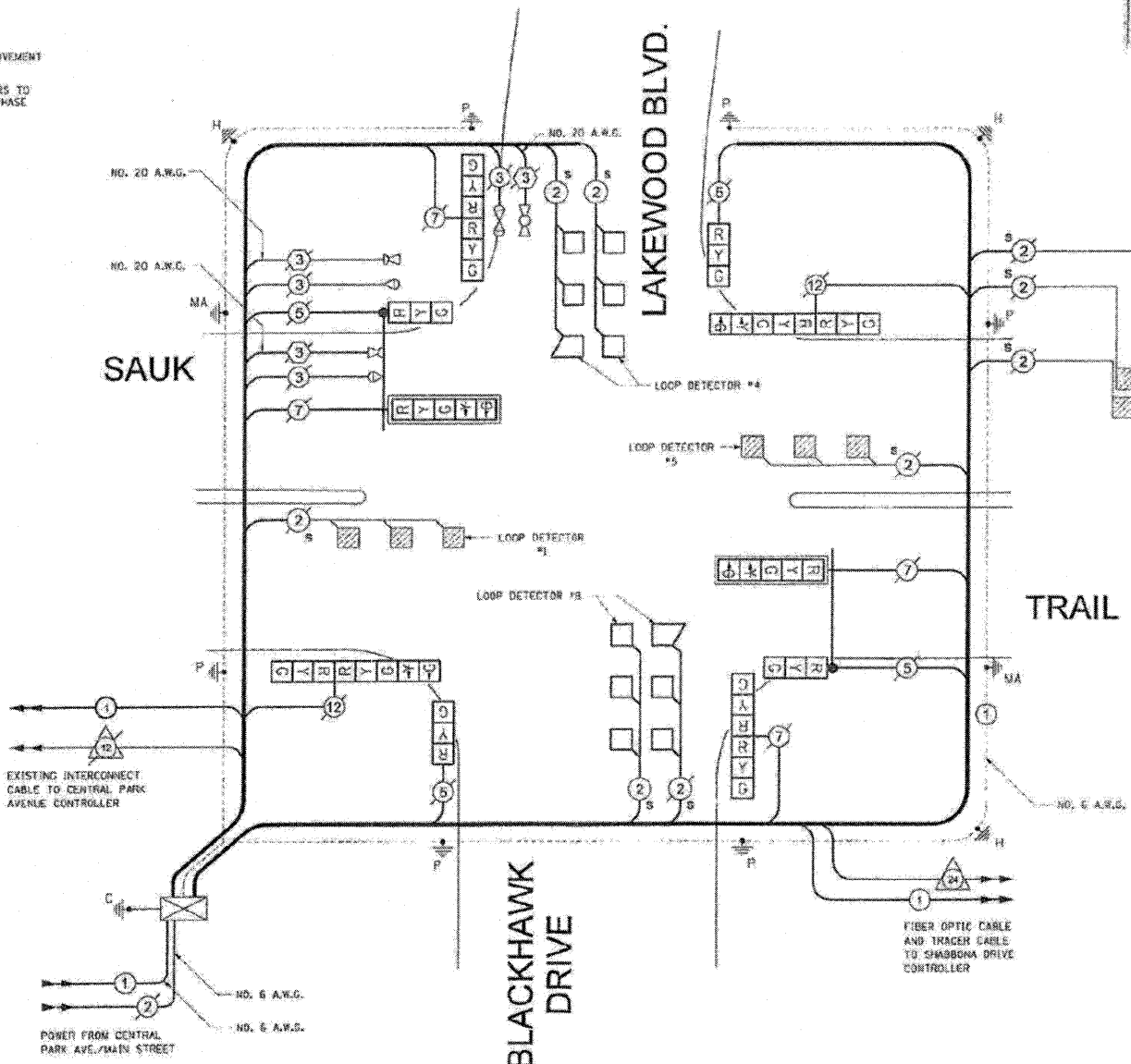
CABLE PLAN LEGEND

	PROPOSED	EXISTING
CONTROLLER CABINET	[Symbol]	[Symbol]
SERVICE INSTALLATION	[Symbol]	[Symbol]
12" TRAFFIC SIGNAL SECTION	[Symbol]	[Symbol]
2 DENOTES NUMBER OF CONDUCTORS ALL CABLE NO. 14 EXCEPT AS INDICATED. ALL LOOP DETECTOR CABLE TO BE TWISTED AND SHIELDED.	[Symbol]	[Symbol]
VEHICLE DETECTOR, INDUCTION LOOP	[Symbol]	[Symbol]
SHIELDED & TWISTED	S	S
EMERGENCY VEHICLE LIGHT DETECTOR	[Symbol]	[Symbol]
CONFIRMATION BEACON	[Symbol]	[Symbol]
OPTICOM CABLE	[Symbol]	[Symbol]
300m PEDESTRIAN SIGNAL HEAD	[Symbol]	[Symbol]
PUSHBUTTON DETECTOR	[Symbol]	[Symbol]
GROUND ROD AT HANDHOLE W/ SCREW HANDHOLE OR CONTROLLER I.C.	[Symbol]	[Symbol]
GROUND ROD AT POST (P), OR MAST ARM POLE (MA)	[Symbol]	[Symbol]
GROUND ROD AT ELECTRIC SERVICE INSTALLATION	[Symbol]	[Symbol]
FIBER OPTIC INTERCONNECT CABLE NO. 62.5/125, 12/C	[Symbol]	[Symbol]
FIBER OPTIC CABLE, NO. 62.5/125 MULTIMODE 12 FIBERS AND SINGLE MODE 12 FIBERS	[Symbol]	[Symbol]

REMOVE EXISTING TRAFFIC SIGNAL EQUIPMENT

THE FOLLOWING ITEMS SHALL BE REMOVED BY THE CONTRACTOR AND SHALL BE DISPOSED OF BY THEM OUTSIDE THE RIGHT-OF-WAY AT THEIR EXPENSE. THE SALVAGE VALUE OF THE REMOVED EQUIPMENT SHALL BE REFLECTED IN THE CONTRACT BID PRICE.

- 2 EACH 14" T.S. POSTS
- 3 EACH 16" T.S. POSTS
- 10 EACH SIGNAL HEAD, 1-FACE, 3-SECTION
- 4 EACH SIGNAL HEAD, 1-FACE, 2-SECTION



- NOTES:**
- THIS IS A SYSTEM GROUND THAT SHALL INTERCONNECT ALL GROUND RODS WITH NO. 6 1/2 COPPER AWG.
 - THE NEUTRAL AND GROUND SHALL BE TIED AT THE SERVICE INSTALLATION BUT SEPARATE AT THE TRAFFIC CABINET.

CABLE PLAN
 NOT TO SCALE

Reference Only

COUNTY OF COOK DEPARTMENT OF HIGHWAYS	
SAUK TRAIL AT LAKEWOOD BLVD. - BLACKHAWK DR. CABLE DIAGRAM	
DESIGNED: R.L.S.	APPROVED: [Signature]
DRAWN: W.A.C.	CHECKED: P.L.W.

COPYRIGHT © 2011 BY BAXTER & WOODMAN, INC.
 STATE OF ILLINOIS PROFESSIONAL DESIGN FIRM
 No. 001-097273-3 FILED 9/26/10 AM
 2/22/2011
 PROJECT: 11-00095-00-RS
 FILE: 091213-CCHD SIGNAL PLANS.shp



DESIGNED - TMS	REVISED -
DRAWN - KAR	REVISED -
CHECKED - JJF	REVISED -
DATE - 10-26-11	FILE - 091213-CCHD SIGNAL PLANS.shp

**STATE OF ILLINOIS
 DEPARTMENT OF TRANSPORTATION**

**COOK COUNTY HIGHWAY DEPARTMENT
 SIGNAL PLANS - REFERENCE ONLY**

SCALE: NONE STA. TO STA.

*1055/1056

F.A.U. RTE.	SECTION	COUNTY	TOTAL SHEETS	SHEET NO.
	11-00095-00-RS	COOK	27	27
CONTRACT NO. 63690				
FED. ROAD DIST. NO. ILLINOIS FED. AID PROJECT W-90039691				