

F.A.U. RTE. 4086 4081	SECTION 11-00007-00-PP	COUNTY MCHENRY	TOTAL SHEETS 13	SHEET NO. 1
ILLINOIS CONTRACT NO.			63695	

STATE OF ILLINOIS
DEPARTMENT OF TRANSPORTATION
DIVISION OF HIGHWAYS

**PLANS FOR PROPOSED
FEDERAL AID HIGHWAY**

FAU ROUTE 4086 (EAST WONDER LAKE ROAD)
180' NORTH OF CATALPA DRIVE TO DEEP SPRINGS ROAD
FAU ROUTE 4081 (THOMPSON ROAD)
1,050' SOUTH OF VINE AVENUE TO FAU 4082 (WONDERMERE ROAD)

RESURFACING
SECTION 11-00007-00-RS
PROJECT M-9003 (901)
VILLAGE OF WONDER LAKE
MCHENRY COUNTY
C-91-172-12

FOR INDEX OF SHEETS, SEE SHEET NO. 2
FOR HIGHWAY STANDARDS, SEE SHEET NO. 2

TRAFFIC DATA

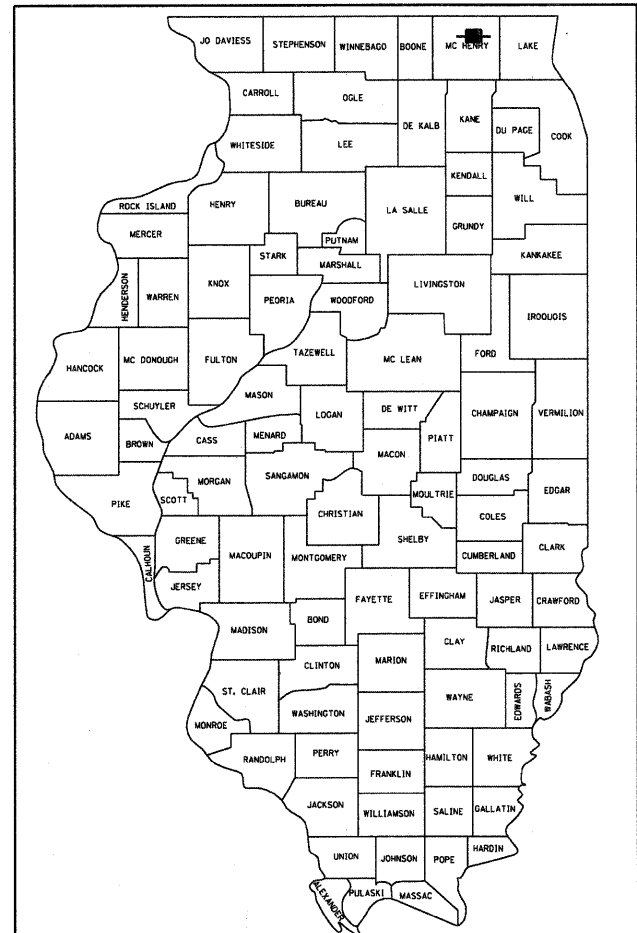
ADT:
EAST WONDER LAKE ROAD 4850 VPD (2009)
THOMPSON ROAD 5200 VPD (2009)

POSTED SPEED

EAST WONDER LAKE ROAD 35 MPH
THOMPSON ROAD 35 MPH

DESIGN DESIGNATION

FAU 4086 (EAST WONDER LAKE ROAD) - COLLECTOR
FAU 4081 (THOMPSON ROAD) - COLLECTOR

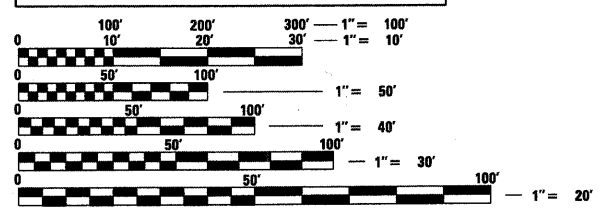


LOCATION OF SECTION INDICATED THIS: - [Symbol] -

PROJECT LOCATION MAP
MCHENRY TOWNSHIP & GREENWOOD TOWNSHIP
N.T.S.

JULIE
JOINT
UTILITY
LOCATION
INFORMATION FOR
EXCAVATION
CALL 811

Know what's below.
Call before you dig.

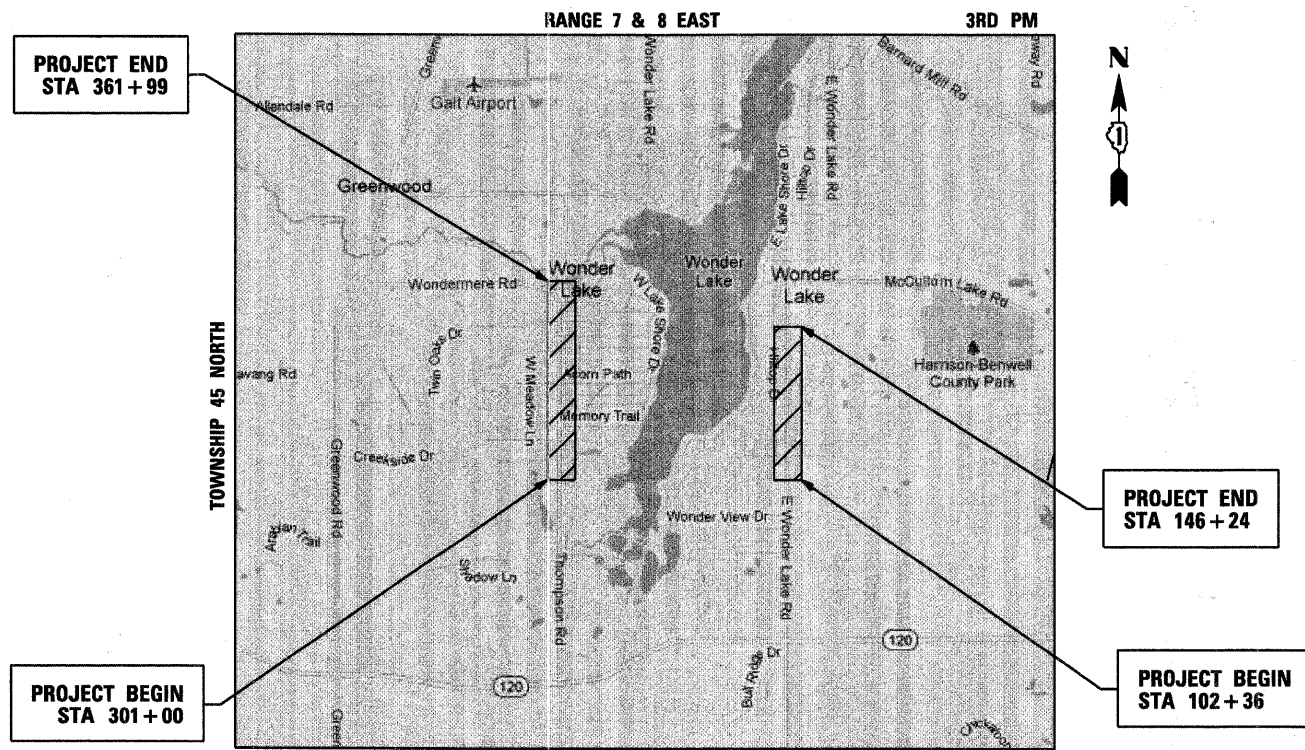


FULL SIZE PLANS HAVE BEEN PREPARED USING STANDARD
ENGINEERING SCALES. REDUCED SIZED PLANS WILL NOT
CONFORM TO STANDARD SCALES. IN MAKING MEASUREMENTS
ON REDUCED PLANS, THE ABOVE SCALES MAY BE USED.

420 NORTH FRONT STREET, SUITE 100 | MCHENRY, ILLINOIS 60050
Phone: 815.385.1778 | Toll Free: 800.728.7805 | Fax: 815.385.1781 | HRGreen.com
ILLINOIS PROFESSIONAL DESIGN FIRM #184-001322

PROJECT ENGINEER: J. STRZALKA
PROJECT MANAGER: A. CHAUDHRY

CONTRACT NO. 63695



PROJECT LENGTH
NET LENGTH OF IMPROVEMENT (EAST WONDER LAKE ROAD) = 4,388 FT (0.83 MI)
NET LENGTH OF IMPROVEMENT (THOMPSON ROAD) = 6,099 FT (1.16 MI)
GROSS LENGTH OF PROJECT = 10,487 FT (1.99 MI)

STATE OF ILLINOIS
DEPARTMENT OF TRANSPORTATION
DIVISION OF HIGHWAYS

APPROVED FEB 8th 2012
[Signature]
VILLAGE OF WONDER LAKE

PASSED FEBRUARY 21 2012
[Signature]
DISTRICT ONE ENGINEER OF LOCAL ROADS AND STREETS

RELEASING FOR BID
BASED ON LIMITED REVIEW FEBRUARY 23, 2012
[Signature]
DEPUTY DIRECTOR OF HIGHWAYS, REGION ONE ENGINEER

PROFESSIONAL ENGINEER'S SIGN & SEAL

PRINTED BY THE AUTHORITY
OF THE STATE OF ILLINOIS

PROGRAM AND OFFICE ENGINEER: CHARLES F. RIDDLE, P.E. 847-705-4406 SCHAUMBURG, IL

COMPANY NAME: STEVE WEIR WONDER LAKE
PROJECT CONTACT: STEVE WEIR WONDER LAKE
DATE PLOTTED: 2/6/2012 10:54:11 AM
FILE NAME: 6610387-cur.dgn
PLOT DRIVER: pdf.dwt
PEN TABLE: STANDARD-TRANS.TBL